

**Palestinian National Authority**  
**Palestinian Central Bureau of Statistics**

**Press Release**  
**Preliminary Estimates of Quarterly National Accounts**  
**(First Quarter 2007)**

**June, 2007**

PAGE NUMBERS OF ENGLISH TEXT ARE PRINTED IN SQUARE BRACKETS.  
TABLES ARE PRINTED IN THE ARABIC ORDER (FROM RIGHT TO LEFT)

**New Web Site:**

- PCBS has launched the electronic atlas of Palestine on <http://atlas.pcbs.gov.ps>
- All of PCBS publications are available online in electronic format on PCBS web site <http://www.pcbs.gov.ps>
- For additional data requests, online form is available on PCBS web site and users can track the status of their request and download the data once made available.

**This document is prepared in accordance with the standards procedures  
stated in the Code of Practice for Palestine Official Statistics 2006.**

© June 2007.

**All rights reserved.**

**Suggested Citation:**

**Palestinian Central Bureau of Statistics, 2007. *Press Release, Preliminary Estimates of Quarterly National Accounts (First Quarter 2007).***  
*Ramallah - Palestine.*

All correspondence should be directed to:  
Dissemination and Documentation Department/Division of User Services  
**Palestinian Central Bureau of Statistics**  
**P.O.Box 1647, Ramallah - Palestine.**

Tel: (972/970) 2 240 6340  
E-Mail: [Diwan@pcbs.gov.ps](mailto:Diwan@pcbs.gov.ps)

Fax: (972/970) 2 240 6343  
Web-site: <http://www.pcbs.gov.ps>



## Population, Housing and Establishment Census- 2007

## Table of Contents

<b><u>Subject</u></b>	<b><u>Page</u></b>
Press Release, Preliminary Estimates of Quarterly National Accounts (First Quarter 2007).	<b>[5]</b>
Concepts and Definitions	<b>[9]</b>
Tables	<b>11</b>

## **Notice to users of this report**

PCBS would like to indicate to users of this press release that the data presented is at constant prices, where the year 1997 is the base year.

PCBS indicates also that all data related to the first quarter of the year 2007 represents preliminary estimates (flash estimates) issued for the first time in accordance with the estimated short-term indicators; whereas the data related to the fourth quarter of the year 2006 revised for the first time based on the availability of the short term indicators. Data will be revised when the necessary short-term indicators are available within the requested periodicity.

Based on the international recommendations for the compilation of the QNA revisions, the final report of the Quarterly National Accounts will be released after finalizing the Annual National Accounts for Production and Expenditure sides at constant prices.

PCBS also indicates that the data related to Government (Education, Health in addition to the Public Administration and Defense) valued by the Accrual Bases based on the recommendations of the System of National Accounts issued by the UN.

Its worth mentioning that:

- The unemployment rate for the first quarter of the year 2007 reached to 21.6% recorded a decrease by 1.8% compared with the fourth quarter of the year 2006. The unemployment rate recorded a decrease by 14.6% during the first quarter 2007 compared with the similar quarter of the previous year 2006. The unemployment rate for the full year 2006 was 23.6% compared with 23.5% in 2005.
- The first quarter data was compiled during the ongoing difficulties, specially the partial delivery of government services to the public and partial transfers of wages and salaries for workers in the public sector, and it should be mentioned that there was no new changes on temporary international mechanism through its three supporting windows.
- It was not possible to have the updating data for the first quarter of the year 2007 pertaining the Custom duties and the Value added tax on imports since there was no data available from the data sources in the necessary periodicity, so the data for those indicators were fixed as it was during the fourth quarter 2006.



**Press Release**  
**Preliminary Estimates of Quarterly National Accounts**  
**(First Quarter 2007).**

**In the First Quarter 2007, GDP declined by 4.2% compared with the Fourth Quarter 2006**

This quarterly report is based on a number of short-term economic indicators compiled quarterly and covering various economic activities. Therefore we compare the main macroeconomic indicators in order to provide an informative tool for monitoring the economy in the short term. In this release we present a comparison with the previous quarter (Fourth Quarter 2006) and the parallel quarter of the previous year 2006 (First Quarter 2006).

**Continuous decline in GDP during the First Quarter 2007**

The preliminary estimates at constant prices for the first quarter of 2007 shows continuous decreases in the performance of the economy in Remaining West Bank and Gaza Strip. At the same time the GDP estimates decreased during the fourth quarter of 2006 by 5.6% compared third quarter of 2006 based on the second revision for the data, the first quarter 2007 shows a continuous decrease by 4.2% compared with the fourth quarter 2006, and showed a decrease of 13.4% compared to the first quarter of the year 2006 at constant prices.

The estimates refers also to decreases in the main economic activities within the available short term indicators for each activity. There were decreases in the agriculture, manufacturing, electricity and water supply activity, financial intermediation, real estate, renting and business services, community, social and personal services, financial intermediation indirectly measured (FISIM) activity.

In addition, the preliminary estimates for the Gross Domestic Product per capita for Remaining West Bank and Gaza Strip during the first quarter 2007 was 247.4 US\$ which declined by 5.0% compared with the fourth quarter of 2006, while it showed a decrease of 15.9% compared with the same quarter of the year 2006.

**Performance of Main Economic Activities**

The performance of different activities during the first quarter of the year 2007 compared to both the fourth quarter of the year 2006 and the same quarter of the previous year was as follows:

- The gross value added for **Agriculture** activity decreased by 36.0% during the first quarter of 2007 in relation to the fourth quarter of the year 2006, while it increased by 24.6% compared with the parallel quarter of the year 2006.
- The gross value added for **Mining, manufacturing, water and electricity** activities in Remaining West Bank and Gaza Strip declined during the first quarter 2007 compared to the fourth quarter of the year 2006 by 9.4%, while it increased by 7.1% compared to the first quarter of the year 2006.
- The gross value added for **Construction** activity increased by 17.6% during the first quarter of the year 2007 compared to the fourth quarter 2006, while it decreased by 1.8% compared to the same quarter of the year 2006.

- The gross value added increased for **Wholesale and Retail Trade** by 10.3% compared to the fourth quarter of the year 2006; however, when compared to the same quarter of the year 2006, this activity recorded a increase by 11.1%.
- The gross value added for **Transport** increased during the first quarter of the year 2007 by 9.4% compared to the fourth quarter of 2006. while it increased by 3.7% compared to the first quarter of the year 2006.
- The gross value added for **Financial Intermediation** activity recorded a decline during the first quarter 2007 compared to the fourth quarter of the year 2006 by 0.2%, while it decreased by 0.4% compared to the first quarter of the year 2006.
- The gross value added for **Real estate, renting and business services** activity recorded a decline during the first quarter 2007 compared to the fourth quarter of the year 2006 by 30.5%, while it decreased by 29.2% compared to the first quarter of the year 2006.
- The gross value added for **Community, social and personal services** activity recorded a decline during the first quarter 2007 compared to the fourth quarter of the year 2006 by 5.1%, while it increased by 2.8% compared to the first quarter of the year 2006.
- The gross value added for **Hotels** increased by 36.2% compared to the fourth quarter of the year 2006, and showed a increase of 5.4% compared to the parallel quarter of the year 2006.
- The gross value added for **Education** increased during the first quarter of the year 2007 by 17.9% compared to the fourth quarter of the year 2006, while it showed a decrease of 43.7% compared to the first quarter of the year 2006. The strike of the education sector starting the fourth quarter 2006 and leads to a decline in the productivity of the employees in the education activity, meanwhile the strike tension was declined during the first quarter 2007.
- The gross value added for **Health** increased during the first quarter of the year 2007 by 19.3% compared to the fourth quarter of the year 2006, while it showed a decrease of 41.1% compared to the first quarter of the year 2006. The strike of the health sector starting the fourth quarter 2006 and leads to a decline in the productivity of the employees in the health activity, meanwhile the strike tension was declined during the first quarter 2007.
- The gross value added for **Public Administration and Defense** increased by 9.9% during the first quarter of the year 2007 compared to the fourth quarter of the year 2006, and decreased by 35.2% compared to the parallel quarter of the year 2006.

#### **Percentage Contribution for Economic Activity to Quarterly GDP:**

The percentage contribution for economic activity to the quarterly GDP were affected in short term (compared with fourth quarter 2006 and parallel quarter of the year 2006), Manufacturing activity increased from (9.3%) in the first quarter of 2006 to (12.1%) in the fourth quarter of 2006, then it decreased to (11.4%) in the first quarter of 2007. Agriculture activity increased from (5.9%) in the first quarter of 2006 to (12.7%) in the fourth quarter of 2006, then it decreased to (8.5%) in the first quarter of 2007. Real estate activity increased



from (10.2%) in the first quarter of 2006 to (11.5%) in the fourth quarter of 2006, then it decreased to (8.3%) in the first quarter of 2007. Electricity and water supply activity increased from (1.4%) in the first quarter of 2006 to (1.9%) in the fourth quarter of 2006, then it decreased to (1.8%) in the first quarter of 2007

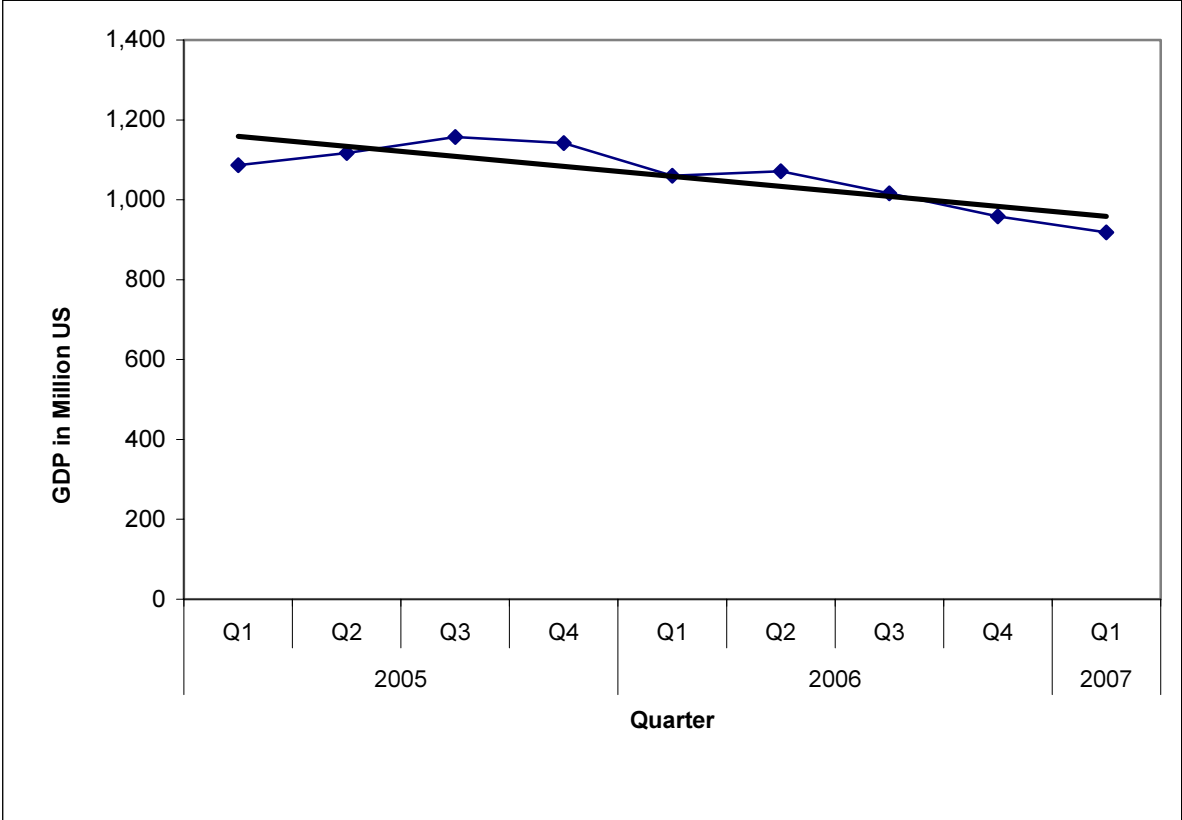
On the other hand Transport activities contribution increased from (11.4%) in the first quarter of 2006 to (12.0%) in the fourth quarter of 2006, then this increases continued to reach (13.7%) in the first quarter of 2007. Also, Trade activities increased from (8.7%) in the first quarter of 2006 to (9.7%) in the fourth quarter of 2006, then this increases continued to reach (11.2%) in the first quarter of 2007. Also, Financial Intermediation increased from (4.4%) in the first quarter of 2006 to (4.9%) in the fourth quarter of 2006, then this increases continued to reach (5.1%) in the first quarter of 2007.

On the other hand Community, social and personal services activities increased from (1.0%) in the first quarter of 2006 to (1.2%) in the fourth quarter of 2006 and the first quarter 2007. Also, Mining activity increased from (0.4%) in the first quarter of 2006 to (0.5%) in the fourth quarter of 2006 and the first quarter 2007.

Otherwise, Public administration and defense activity decreased from (15.6%) in the first quarter of 2006 to (10.2%) in the fourth quarter of 2006, then increased to reach (11.7%) in the first quarter of 2007, whereas Education decreased from (7.6%) in the first quarter of 2006 to (4.0%) in the fourth quarter of 2006, then increased to reach (4.9%) in the first quarter of 2007, Construction activity decreased from (2.6%) in the first quarter of 2006 to (2.4%) in the fourth quarter of 2006, then increased to reach (2.9%) in the first quarter of 2007, Health activity decreased from (3.8%) in the first quarter of 2006 to (2.1%) in the fourth quarter of 2006, then increased to reach (2.6%) in the first quarter of 2007, Hotels activity decreased from (1.6%) in the first quarter of 2006 to (1.4%) in the fourth quarter of 2006, then increased to reach (1.9%).

The Following Figure Shows the Quarterly GDP Trend Line in Remaining West Bank and Gaza Strip for the Years 2005-2007

**Figure 1: Quarterly GDP Trend Line in Remaining West Bank and Gaza Strip for the Years 2005-2007**



## Concepts and Definitions

### Statistical Unit

The United Nations System of National Accounts SNA 1993 defines two main types of statistical units:

#### - Institutional Unit-Enterprise

An institutional unit is an economic entity that is capable, in its own right, of owning assets, incurring liabilities and engaging in economic activities and in transactions with other entities.

#### - Establishment

An establishment is an enterprise, or part of an enterprise, which produces only a single group of goods (with the possibility of production from secondary activities) in which the principal productive activity accounts for most of the value added.

Breaking down institutional units into establishments serves to create more consistent statistical units in the productive sense.

### Principal Economic Activity

It is the main activity of the enterprise during the reference year, using (ISIC-3) for classification and coding.

### Output

Value of goods and services, including own-account goods, produced during a specific period.

### Value added

Value added is a central concept of production and refers to the generated value of any unit that carries out any productive activity. Gross value added is defined as the value of gross production less the value of intermediate consumption. The net value added is defined as the gross value less the value of fixed capital consumption. The net value added reflects the performance of the economy in a better way; however, since it is difficult to measure the fixed capital consumption accurately, the concept of gross value added is more frequently used.

Value added at producers' price is the difference between output at basic prices and the value of the intermediate consumption at purchase price plus taxes (less subsidies) on production. However, if taxes and subsidies are excluded, value added will be obtained in basic prices.

### Gross Domestic Product or GDP

Gross Domestic Product or GDP is the summary measure of the output or production during a certain period in time. Estimate of GDP, like the output and the value added, can vary according to taxes and subsidies taken into consideration. GDP is usually estimated at market prices, producers' prices, or basic prices.

### Deflating

Changing all data at current prices to constant prices by choosing the suitable indices by which the effect of prices on the data will be isolated, and choosing suitable base year in order to do this.

**Short-term indicators**

All indicators that have a periodicity for less than a year, usually a month or quarter.

**Industrial Production Index**

A statistical tool used for measuring the change in volume of output of industrial activities during a certain period of time. The index uses the change in volume of production for the largest establishments in each industry.

**Remaining West Bank**

The West Bank excluding that part of Jerusalem that was annexed after the 1967 occupation by Israel.

**Financial Intermediation indirectly measured (FISIM)**

It refers to the total of property income payable to financial institution less the gross value of payable interests on these institutions excluding property income receivable by investment of money of the same institutions..

دول (1): الناتج المحلي الاجمالي ونسبة مساهمة الانشطة الاقتصادية في باقي الضفة الغربية وقطاع غزة حسب النشاط الاقتصادي خلال الربع الأول من العام 2007 بالأسعار الثابتة: سنة الأساس 1997

**Table (1): GDP and Percentage Contribution in Remaining West Bank and Gaza Strip by Economic Activity for the First Quarter of year 2007 at Constant Prices: (1997 is the base year)**

Value in million US\$

القيمة بالمليون دولار أمريكي

Economic Activity	المساهمة النسبية (%) Percentage Contribution (%)	الناتج المحلي الاجمالي GDP*	النشاط الاقتصادي
<b>Agriculture and fishing</b>	<b>8.5</b>	<b>78.0</b>	الزراعة وصيد الاسماك
<b>Mining, manufacturing, electr. and water</b>	<b>13.7</b>	<b>125.8</b>	التعدين، الصناعة التحويلية والمياه والكهرباء
Mining and quarrying	0.5	4.8	التعدين واستغلال المحاجر
Manufacturing	11.4	104.7	الصناعة التحويلية
Electricity and water supply	1.8	16.3	امدادات المياه والكهرباء
<b>Construction</b>	<b>2.9</b>	<b>26.7</b>	الانشاءات
<b>Wholesale and retail trade</b>	<b>11.2</b>	<b>102.8</b>	تجارة الجملة والتجزئة
<b>Transport, Storage and Communications</b>	<b>13.7</b>	<b>125.8</b>	النقل والتخزين والاتصالات
<b>Financial intermediation</b>	<b>5.1</b>	<b>46.7</b>	الوساطة المالية
<b>Other services</b>	<b>18.9</b>	<b>174.2</b>	الخدمات
Real estate, renting and business services	8.3	76.5	الانشطة العقارية والاجارية والتجارية
Community, social and personal services	1.2	11.1	أنشطة الخدمة المجتمعية والاجتماعية والشخصية
Hotels and restaurants	1.9	17.7	المطاعم والفنادق
Education	4.9	45.4	التعليم
Health and social work	2.6	23.5	الصحة والعمل الاجتماعي
<b>Public administration and defense</b>	<b>11.7</b>	<b>107.2</b>	الإدارة العامة والدفاع
<b>Households with employed persons</b>	<b>0.3</b>	<b>2.3</b>	الخدمات المنزلية
Less: FISIM	-3.7	-33.6	ناقص: خدمات الوساطة المالية المقاسة بصورة غير مباشرة
Plus: Customs duties	8.4	77.1	زائد: الرسوم الجمركية
Plus: VAT on imports, net	9.3	85.5	زائد: صافي ضريبة القيمة المضافة على الواردات
<b>Quarterly Gross Domestic Product</b>	<b>100</b>	<b>918.5</b>	<b>الناتج المحلي الاجمالي الربعي</b>

\* Flash Estimates

\* تقديرات أولية (الإصدار الأول)

جدول (2): الناتج المحلي الاجمالي في باقي الضفة الغربية وقطاع غزة حسب النشاط الاقتصادي والربع للعامين 2005, 2006 بالاسعار الثابتة: سنة الاساس 1997  
 Table (2): GDP in Remaining West Bank and Gaza Strip by Economic Activity and Quarter for the years 2005, 2006  
 at Constant Prices: (1997 is the base year)

Value in million US\$

القيمة بالمليون دولار أمريكي

Economic Activity	2006				2005				النشاط الاقتصادي
	الربع الرابع ** Q IV	الربع الثالث *** Q III	الربع الثاني *** Q II	الربع الاول *** Q I	الربع الرابع Q IV	الربع الثالث Q III	الربع الثاني Q II	الربع الاول Q I	
Agriculture and fishing	121.9	71.1	78.4	62.6	77.0	84.4	86.1	65.1	الزراعة وصيد الاسماك
Mining, manufacturing, electr. and water	138.9	142.1	132.6	117.5	134.1	143.9	142.1	144.7	التعدين، الصناعة التحويلية والمياه والكهرباء
Mining and quarrying	4.7	4.8	4.5	4.0	4.8	4.7	4.7	4.1	التعدين واستغلال المحاجر
Manufacturing	116.1	118.8	110.9	98.2	112.7	121.4	119.8	122.6	الصناعة التحويلية
Electricity and water supply	18.1	18.5	17.2	15.3	16.6	17.8	17.6	18.0	امدادات المياه والكهرباء
Construction	22.7	26.0	28.1	27.2	28.7	32.9	33.5	24.3	الانشاءات
Wholesale and retail trade	93.2	103.0	94.0	92.5	94.1	102.2	94.4	83.2	تجارة الجملة والتجزئة
Transport, Storage and Communications	115.0	115.5	114.2	121.3	115.1	113.9	115.1	117.4	النقل والتخزين والاتصالات
Financial intermediation	46.8	46.8	46.2	46.9	51.1	49.1	45.3	41.9	الوساطة المالية
Other services	193.0	229.8	261.2	256.2	286.9	284.4	263.1	265.8	الخدمات
Real estate, renting and business services	110.1	121.1	108.5	108.1	108.1	119.8	109.1	109.8	الانشطة العقارية والاجارية والتجارية
Community, social and personal services	11.7	10.4	10.7	10.8	10.6	11.0	10.4	11.2	أنشطة الخدمة المجتمعية والاجتماعية والشخصية
Hotels and restaurants	13.0	14.2	23.0	16.8	17.9	16.5	15.6	18.1	المطاعم والفنادق
Education	38.5	56.9	79.3	80.6	91.2	90.4	82.0	78.9	التعليم
Health and social work	19.7	27.2	39.7	39.9	59.1	46.7	46.0	47.8	الصحة والعمل الاجتماعي
Public administration and defense	97.5	138.0	151.7	165.5	231.2	208.7	178.6	177.6	الإدارة العامة والدفاع
Households with employed persons	2.3	2.1	2.1	2.2	2.0	2.2	2.1	2.2	الخدمات المنزلية
Less: FISIM	-35.3	-34.7	-33.9	-34.4	-36.0	-35.9	-34.7	-33.0	ناقص: خدمات الوساطة المالية المقاسة بصورة غير مباشرة
Plus: Customs duties	77.1	76.2	68.5	63.1	74.1	73.5	65.9	60.7	زائد: الرسوم الجمركية
Plus: VAT on imports, net	85.5	100.1	128.7	140.0	83.5	97.7	125.7	136.7	زائد: صافي ضريبة القيمة المضافة على الواردات
<b>Gross Domestic Product</b>	<b>958.6</b>	<b>1,016.0</b>	<b>1,071.8</b>	<b>1,060.6</b>	<b>1,141.8</b>	<b>1,157.0</b>	<b>1,117.2</b>	<b>1,086.6</b>	<b>الناتج المحلي الاجمالي</b>

\*\* First Revision, \*\*\* Second Revision

\*\* التتقيح الأول، \*\*\* التتقيح الثاني

جدول (3): نسبة مساهمة الأنشطة الاقتصادية في الناتج المحلي الإجمالي في باقي الضفة الغربية وقطاع غزة حسب النشاط الاقتصادي والربع للعامين 2005, 2006 بالأسعار الثابتة: سنة الأساس 1997  
**Table (3): Percentage Contribution to GDP in Remaining West Bank and Gaza Strip by Economic Activity and Quarter for the years 2005, 2006 at Constant Prices: (1997 is the base year)**

Value in million US\$

القيمة بالمليون دولار أمريكي

Economic Activity	2006				2005				النشاط الاقتصادي
	الربع الرابع ** Q IV	الربع الثالث *** Q III	الربع الثاني *** Q II	الربع الأول *** Q I	الربع الرابع Q IV	الربع الثالث Q III	الربع الثاني Q II	الربع الأول Q I	
Agriculture and fishing	12.7	7.0	7.3	5.9	6.7	7.3	7.7	6.0	الزراعة وصيد الأسماك
Mining, manufacturing, electr. and water	14.5	14.0	12.3	11.1	11.7	12.4	12.7	13.3	التعدين، الصناعة التحويلية والمياه والكهرباء
Mining and quarrying	0.5	0.5	0.4	0.4	0.4	0.4	0.4	0.4	التعدين واستغلال المحاجر
Manufacturing	12.1	11.7	10.3	9.3	9.9	10.5	10.7	11.3	الصناعة التحويلية
Electricity and water supply	1.9	1.8	1.6	1.4	1.4	1.5	1.6	1.6	إمدادات المياه والكهرباء
Construction	2.4	2.6	2.6	2.6	2.5	2.8	3.0	2.2	الإنشاءات
Wholesale and retail trade	9.7	10.1	8.8	8.7	8.2	8.8	8.4	7.7	تجارة الجملة والتجزئة
Transport, Storage and Communications	12.0	11.4	10.7	11.4	10.1	9.8	10.3	10.8	النقل والتخزين والاتصالات
Financial intermediation	4.9	4.6	4.3	4.4	4.5	4.2	4.1	3.9	الوساطة المالية
Other services	20.2	22.6	24.3	24.2	25.1	24.6	23.5	24.5	الخدمات
Real estate, renting and business services	11.5	11.9	10.1	10.2	9.5	10.4	9.8	10.1	الأنشطة العقارية والإيجارية والتجارية
Community, social and personal services	1.2	1.0	1.0	1.0	0.9	1.0	0.9	1.0	أنشطة الخدمة المجتمعية والاجتماعية والشخصية
Hotels and restaurants	1.4	1.4	2.1	1.6	1.6	1.4	1.4	1.7	المطاعم والفنادق
Education	4.0	5.6	7.4	7.6	8.0	7.8	7.3	7.3	التعليم
Health and social work	2.1	2.7	3.7	3.8	5.1	4.0	4.1	4.4	الصحة والعمل الاجتماعي
Public administration and defense	10.2	13.6	14.2	15.6	20.2	18.0	16.0	16.3	الإدارة العامة والدفاع
Households with employed persons	0.2	0.2	0.2	0.2	0.2	0.2	0.2	0.2	الخدمات المنزلية
Less: FISIM	-3.7	-3.5	-3.2	-3.2	-3.1	-3.0	-3.1	-3.0	ناقص: خدمات الوساطة المالية المقاسة بصورة غير مباشرة
Plus: Customs duties	8.0	7.5	6.5	5.9	6.6	6.5	5.9	5.6	زائد: الرسوم الجمركية
Plus: VAT on imports, net	8.9	9.9	12.0	13.2	7.3	8.4	11.3	12.5	زائد: صافي ضريبة القيمة المضافة على الواردات
<b>Gross Domestic Product</b>	<b>100</b>	<b>100</b>	<b>100</b>	<b>100</b>	<b>100</b>	<b>100</b>	<b>100</b>	<b>100</b>	<b>الناتج المحلي الإجمالي</b>

\*\* First Revision, \*\*\* Second Revision

\*\* التتقيح الأول، \*\*\* التتقيح الثاني

جدول (4): نصيب الفرد من الناتج المحلي الإجمالي خلال الأرباع الخاصة بالاعوام 2005-2007 بالأسعار الثابتة: سنة الأساس 1997  
**Table (4): GDP Per Capita by the Quarters of years 2005-2007 at Constant Prices: (1997 is the base year)**

Value in US\$

القيمة بالدولار الأمريكي

Quarter \ Year	2007	2006	2005	السنة \ الربع
First Quarter	247.4	294.3	313.4	الربع الأول
Second Quarter	-	296.1	319.4	الربع الثاني
Third Quarter	-	278.3	327.9	الربع الثالث
Fourth Quarter	-	260.5	320.9	الربع الرابع
<b>Annual Estimate</b>	-	<b>1,129.2</b>	<b>1,281.6</b>	التقدير السنوي



جدول (5): الناتج المحلي الاجمالي في باقي الضفة الغربية وقطاع غزة حسب النشاط الاقتصادي للأعوام 1999-2006 بالاسعار الثابتة: سنة الاساس 1997

Table (5): GDP in Remaining West Bank and Gaza Strip by Economic Activity for the years 1999-2006 at Constant Prices: (1997 is the base year)

Value in million US\$

القيمة بالمليون دولار أمريكي

Economic Activity	**2006	*2005	2004	2003	2002	2001	2000	1999	النشاط الاقتصادي
Agriculture and fishing	334.0	312.6	319.0	311.2	269.6	350.1	388.0	470.7	الزراعة وصيد الاسماك
Mining, manufacturing, electr. and water	531.1	564.8	564.3	532.9	580.0	614.6	668.6	655.5	التعدين، الصناعة التحويلية والمياه والكهرباء
Mining and quarrying	18.0	18.3	17.5	17.0	33.0	28.9	32.6	35.7	التعدين واستغلال المحاجر
Manufacturing	444.0	476.5	477.7	450.7	476.3	504.6	570.2	566.4	الصناعة التحويلية
Electricity and water supply	69.1	70.0	69.1	65.2	70.7	81.1	65.8	53.4	امدادات المياه والكهرباء
Construction	104.0	119.4	103.7	96.9	67.5	85.5	270.4	616.9	الانشاءات
Wholesale and retail trade	382.7	373.9	359.0	340.4	350.0	414.8	519.2	537.8	تجارة الجملة والتجزئة
Transport, Storage and Communications	466.0	461.5	444.4	392.0	349.6	317.3	292.5	231.0	النقل والتخزين والاتصالات
Financial intermediation	186.7	187.4	170.0	158.9	149.9	138.1	191.5	169.1	الوساطة المالية
Other services	940.2	1,100.2	1,047.2	1,002.5	899.1	994.6	1055.7	990.8	الخدمات
Real estate, renting and business services	447.8	446.8	428.9	404.1	392.7	444.6	566.7	444.3	الانشطة العقارية والاجارية والتجارية
Community, social and personal services	43.6	43.2	43.3	42.5	33.2	29.3	32.2	28.3	أنشطة الخدمة المجتمعية والاجتماعية والشخصية
Hotels and restaurants	67.0	68.1	61.8	58.0	60.7	104.4	93.7	128.0	المطاعم والفنادق
Education	255.3	342.5	324.9	315.1	287.7	290.8	244.4	262.4	التعليم
Health and social work	126.5	199.6	188.3	182.8	124.8	125.5	118.7	127.8	الصحة والعمل الاجتماعي
Public administration and defense	552.7	796.1	736.4	694.7	578.1	628.9	559.3	497.7	الإدارة العامة والدفاع
Households with employed persons	8.7	8.5	8.6	8.4	8.2	7.7	9.1	8.7	الخدمات المنزلية
Less: FISIM	-138.3	-139.6	-124.9	-118.9	-109.6	-117.4	-154.4	-129.5	ناقص: خدمات الوساطة المالية المقاسة بصورة غير مباشرة
Plus: Customs duties	284.9	274.2	277.9	262.2	75.8	174.6	196.3	208.6	زائد: الرسوم الجمركية
Plus: VAT on imports, net	454.3	443.6	342.1	313.8	338.2	309.0	264.9	254.4	زائد: صافي ضريبة القيمة المضافة على الواردات
<b>Gross Domestic Product</b>	<b>4,107.0</b>	<b>4,502.6</b>	<b>4,247.7</b>	<b>3,995.0</b>	<b>3,556.4</b>	<b>3,917.8</b>	<b>4,261.1</b>	<b>4,511.7</b>	<b>الناتج المحلي الاجمالي</b>

\* Second Revision \*\* First Revision

\* التتقيح الثاني \*\* التتقيح الأول