



Palestinian National Authority
Palestinian Central Bureau of Statistics

Press Release
Preliminary Estimates of Quarterly National Accounts
(Fourth Quarter 2006)

February, 2007

PAGE NUMBERS OF ENGLISH TEXT ARE PRINTED IN SQUARE BRACKETS.
TABLES ARE PRINTED IN THE ARABIC ORDER (FROM RIGHT TO LEFT)

New Web Site:

- All of PCBS publications are available online in electronic format on PCBS web site <http://www.pcbs.gov.ps>
- For additional data requests, online form is available on PCBS web site and users can track the status of their request and download the data once made available.

**This document is prepared in accordance with the standards procedures
stated in the Code of Practice for Palestine Official Statistics 2006.**

© February 2007.
All rights reserved.

Suggested Citation:

Palestinian Central Bureau of Statistics, 2007. *Press Release, Preliminary Estimates of Quarterly National Accounts (Fourth Quarter 2006).*
Ramallah - Palestine.

All correspondence should be directed to:
Dissemination and Documentation Department/Division of User Services
Palestinian Central Bureau of Statistics
P.O.Box 1647, Ramallah - Palestine.

Tel: (972/970) 2 240 6340
E-Mail: Diwan@pcbs.gov.ps

Fax: (972/970) 2 240 6343
Web-site: <http://www.pcbs.gov.ps>



Population, Housing and Establishment Census- 2007

Table of Contents

<u>Subject</u>	<u>Page</u>
Press Release, Preliminary Estimates of Quarterly National Accounts (Fourth Quarter 2006).	[5]
Concepts and Definitions	[9]
Tables	11

Notice to users of this report

PCBS would like to indicate to users of this press release that the data presented is at constant prices, where the year 1997 is the base year.

PCBS indicates also that all data related to the fourth quarter of the year 2006 represents preliminary estimates (flash estimates) issued for the first time in accordance with the estimated short-term indicators; whereas the data related to the third quarter of the year 2006 revised for the first time based on the availability of the short term indicators. Data will be revised when the necessary short-term indicators are available within the requested periodicity.

Based on the international recommendations for the compilation of the QNA revisions, the final report of the Quarterly National Accounts will be released after finalizing the Annual National Accounts for Production and Expenditure sides at constant prices.

PCBS also indicates that the data related to Government (Education, Health in addition to the Public Administration and Defense) valued by the Accrual Bases based on the recommendations of the System of National Accounts issued by the UN.

The fourth quarter data was compiled during the ongoing difficulties, specially the partial delivery of government services to the public and partial transfers of wages and salaries for workers in the public sector.

Its worth mentioning that:

- The total reported financial support to the Palestinian Territory during the year 2006, through different sources reached around one thousand million US\$, specially through the International Temporary Mechanism (ITM), and these amounts were transferred directly to the end beneficiary.
- The total amount of paid salaries of public workers for the year 2006 reaches 45% of the due amount.
- The unemployment rate for the fourth quarter of the year 2006 reached to 22.0% recorded a decrease by 9.0% compared with the third quarter of the same year. The unemployment rate recorded a decrease by 7.6% during the fourth quarter 2006 compared with the similar quarter of the previous year 2005. The unemployment rate for the full year 2006 was 23.6% compared with 23.5% in 2005.

Press Release
Preliminary Estimates of Quarterly National Accounts
(Fourth Quarter 2006).

In the Fourth Quarter 2006, GDP declined by 11.6% compared with the Third Quarter 2006

This quarterly report is based on a number of short-term economic indicators compiled quarterly and covering various economic activities. Therefore we compare the main macroeconomic indicators in order to provide an informative tool for monitoring the economy in the short term. In this release we present a comparison with the previous quarter (Third Quarter 2006) and the parallel quarter of the previous year 2005 (Fourth Quarter 2005).

Continuous decline in GDP during the fourth quarter 2006

The preliminary estimates at constant prices for the fourth quarter of 2006 shows continuous decreases in the performance of the economy in Remaining West Bank and Gaza Strip. At the same time the GDP estimates decreased during the third quarter of 2006 by 6.9% based on the second revision for the data, the fourth quarter shows a continuous decrease by 11.6% compared with the third quarter of the same year, and showed a decrease of 21.2% compared to the fourth quarter of the year 2005 at constant prices.

The estimates refers also to decreases in the main economic activities within the available short term indicators for each activity. There were decreases in the Mining, Manufacturing, Electricity and water supply activity, Construction, Wholesale and Retail trade, Transport, Community, social and personal services, Real estate, Education, Hotels and Restaurants, Health and social work in addition to the Public administration and defense.

In addition, the preliminary estimates for the Gross Domestic Product per capita for Remaining West Bank and Gaza Strip during the fourth quarter 2006 was 246.7 US\$ which declined by 12.4% compared to the third quarter of the same year, while it showed a decrease of 23.8% compared to the same quarter of the year 2005.

Performance of Main Economic Activities

The performance of different activities during the fourth quarter of the year 2006 compared to both the third quarter of the year 2006 and the same quarter of the previous year was as follows:

- The gross value added for **Agriculture** activity increased by 14.9% during the fourth quarter of 2006 in relation to the third quarter of the same year, while it increased by 20.7% compared with the parallel quarter of the year 2005. It is noticed that the public sector strike during the fourth quarter of the year 2006 leads to substantial increase in the number of employees in agriculture sector accompanying by better of olives season.
- The gross value added for **Mining, manufacturing, water and electricity** activities in Remaining West Bank and Gaza Strip declined during the fourth quarter 2006 compared to the third quarter of the same year by 7.8%, while it declined by 0.7% compared to the fourth quarter of the year 2005.
- The gross value added for **Construction** activity decreased by 0.5% during the fourth quarter of the year 2006 compared to the third quarter 2006, while it decreased by 14.3% compared to the same quarter of the year 2005.

- The gross value added for **Transport** decreased during the fourth quarter of the year 2006 by 1.5% compared to the third quarter of 2006. while it decreased by 1.0% compared to the fourth quarter of the year 2005.
- The gross value added for **Financial Intermediation** activity recorded stability during the fourth quarter 2006 compared to the third quarter of the year 2006, while it decreased by 8.4% compared to the fourth quarter of the year 2005.
- The gross value added decreased for **Wholesale and Retail Trade** by 8.9% compared to the third quarter of the year 2006; however, when compared to the same quarter of the year 2005, this activity recorded a decrease by 0.5%.
- The gross value added for **Education** decreased during the fourth quarter of the year 2006 by 32.4% compared to the third quarter of the same year, while it showed a decrease of 48.6% compared to the fourth quarter of the year 2005. The strike of the education sector reflected in the fourth quarter and leads to a decline in the productivity of the employees in the education activity.
- The gross value added for **Hotels** decreased by 19.8% compared to the third quarter of the year 2006, and showed a decrease of 35.0% compared to the parallel quarter of the year 2005.
- The gross value added for **Public Administration and Defense** decreased by 29.3% during the fourth quarter of the year 2006 compared to the third quarter of the same year, and 43.7% compared to the parallel quarter of the year 2005. This decline in the fourth quarter of the year 2006 was accompanying by partial delivery for the government activity specially in Remaining West Bank.

Percentage Contribution for Economic Activity to Quarterly GDP:

The percentage contribution for economic activity to the quarterly GDP were affected in short term (compared with third quarter 2006 and parallel quarter of the year 2005), Construction activity decreased from (2.5%) in the fourth quarter of 2005 to (2.4%) in the third quarter of 2006, then it increased to (2.7%) in the fourth quarter of 2006.

On the other hand Hotels and restaurants activity decreased from (1.6%) in the fourth quarter of 2005 to (1.4%) in the third quarter of 2006, then this decreases continued to reach (1.3%) in the fourth quarter of 2006. Also, Education activity decreased from (7.9%) in the fourth quarter of 2005 to (6.8%) in the third quarter of 2006, then this decreases continued to reach (5.2%) in the fourth quarter of 2006, whereas Health and social work decreased from (5.1%) in the fourth quarter of 2005 to (3.7%) in the third quarter of 2006, then this decreases continued to reach (3.1%) in the fourth quarter of 2006, whereas Public administration and defense decreased from (20.1%) in the fourth quarter of 2005 to (17.9%) in the third quarter of 2006, then this decreases continued to reach (14.3%) in the fourth quarter of 2006.

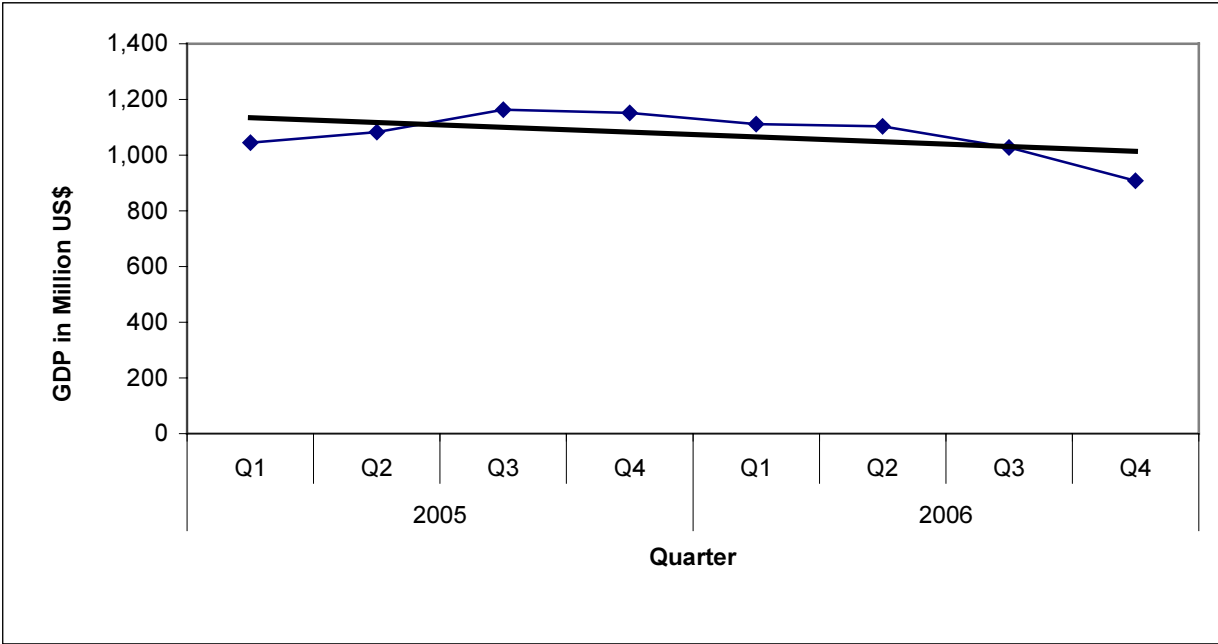
On the other hand Agriculture and fishing activity increased from (6.7%) in the fourth quarter of 2005 to (7.9%) in the third quarter of 2006, then this increases continued to reach (10.2%) in the fourth quarter of 2006. On the other hand, Wholesale and retail trade activity increased from (8.2%) in the fourth quarter of 2005 to (10.0%) in the third quarter of 2006, then this increases continued to reach (10.3%) in the fourth quarter of 2006, whereas Transport,

Storage and Communications increased from (10.0%) in the fourth quarter of 2005 to (11.3%) in the third quarter of 2006, then this increases continued to reach (12.6%) in the fourth quarter of 2006, whereas Financial Intermediation increased from (4.4%) in the fourth quarter of 2005 to (4.6%) in the third quarter of 2006, then this increases continued to reach (5.2%) in the fourth quarter of 2006, whereas Real estate, Renting and Business Services increased from (9.4%) in the fourth quarter of 2005 to (11.7%) in the third quarter of 2006, then this increases continued to reach (12.4%) in the fourth quarter of 2006, whereas Manufacturing activity increased from (9.8%) in the fourth quarter of 2005 to (11.7%) in the third quarter of 2006, then this increases continued to reach (12.2%) in the fourth quarter of 2006, whereas Electricity and Water supply activity increased from (1.4%) in the fourth quarter of 2005 to (1.8%) in the third quarter of 2006, then this increases continued to reach (1.9%) in the fourth quarter of 2006.

On the other hand Community, social and personal services increased from (0.9%) in the fourth quarter of 2005 to (1.1%) in the third and fourth quarter of 2006, Mining activity increased from (0.4%) in the fourth quarter of 2005 to (0.5%) in the third and fourth quarter of 2006.

The following figure shows the Quarterly GDP Trend Line in Remaining West Bank and Gaza Strip for the Years 2005-2006

Figure 1: Quarterly GDP Trend Line in Remaining West Bank and Gaza Strip for the Years 2005-2006



Concepts and Definitions

Statistical Unit

The United Nations System of National Accounts SNA 1993 defines two main types of statistical units:

- Institutional Unit-Enterprise

An institutional unit is an economic entity that is capable, in its own right, of owning assets, incurring liabilities and engaging in economic activities and in transactions with other entities.

- Establishment

An establishment is an enterprise, or part of an enterprise, which produces only a single group of goods (with the possibility of production from secondary activities) in which the principal productive activity accounts for most of the value added.

Breaking down institutional units into establishments serves to create more consistent statistical units in the productive sense.

Principal Economic Activity

It is the main activity of the enterprise during the reference year, using (ISIC-3) for classification and coding.

Output

Value of goods and services, including own-account goods, produced during a specific period.

Value added

Value added is a central concept of production and refers to the generated value of any unit that carries out any productive activity. Gross value added is defined as the value of gross production less the value of intermediate consumption. The net value added is defined as the gross value less the value of fixed capital consumption. The net value added reflects the performance of the economy in a better way; however, since it is difficult to measure the fixed capital consumption accurately, the concept of gross value added is more frequently used.

Value added at producers' price is the difference between output at basic prices and the value of the intermediate consumption at purchase price plus taxes (less subsidies) on production. However, if taxes and subsidies are excluded, value added will be obtained in basic prices.

Gross Domestic Product or GDP

Gross Domestic Product or GDP is the summary measure of the output or production during a certain period in time. Estimate of GDP, like the output and the value added, can vary according to taxes and subsidies taken into consideration. GDP is usually estimated at market prices, producers' prices, or basic prices.

Deflating

Changing all data at current prices to constant prices by choosing the suitable indices by which the effect of prices on the data will be isolated, and choosing suitable base year in order to do this.

Short-term indicators

All indicators that have a periodicity for less than a year, usually a month or quarter.

Industrial Production Index

A statistical tool used for measuring the change in volume of output of industrial activities during a certain period of time. The index uses the change in volume of production for the largest establishments in each industry.

Remaining West Bank

The West Bank excluding that part of Jerusalem that was annexed after the 1967 occupation by Israel.

Financial Intermediation indirectly measured (FISIM)

It refers to the total of property income payable to financial institution less the gross value of payable interests on these institutions excluding property income receivable by investment of money of the same institutions..

جدول (1): الناتج المحلي الاجمالي في باقي الضفة الغربية وقطاع غزة حسب النشاط الاقتصادي للأرباع الخاصة بعام 2006 بالأسعار الثابتة: سنة الأساس 1997
Table (1): GDP in Remaining West Bank and Gaza Strip by Economic Activity for the Quarters of year 2006 at Constant Prices: (1997 is the base year)

Value in million US\$

القيمة بالمليون دولار امريكي

Economic Activity	2006					النشاط الاقتصادي
	الربع الرابع Q IV	الربع الثالث** Q III	الربع الثاني*** Q II	الربع الاول*** Q I	القيم السنوية* Annual Data	
Agriculture and fishing	92.9	80.9	89.1	71.1	334.0	الزراعة وصيد الاسماك
Mining, manufacturing, electr. and water	133.0	144.2	134.6	119.3	531.1	التعدين، الصناعة التحويلية والمياه والكهرباء
Mining and quarrying	4.5	4.9	4.6	4.0	18.0	التعدين واستغلال المحاجر
Manufacturing	111.2	120.5	112.5	99.8	444.0	الصناعة التحويلية
Electricity and water supply	17.3	18.8	17.5	15.5	69.1	امدادات المياه والكهرباء
Construction	24.6	24.7	27.2	27.5	104.0	الانشاءات
Wholesale and retail trade	93.7	102.8	93.9	92.3	382.7	تجارة الجملة والتجزئة
Transport, Storage and Communications	114.0	115.8	114.5	121.7	466.0	النقل والتخزين والاتصالات
Financial intermediation	46.8	46.8	46.2	46.9	186.8	الوساطة المالية
Other services	209.7	254.2	296.4	291.5	1,051.7	الخدمات
Real estate, renting and business services	112.3	120.3	107.8	107.4	447.9	الانشطة العقارية والايجارية والتجارية
Community, social and personal services	10.4	10.8	11.0	11.1	43.3	أنشطة الخدمة المجتمعية والاجتماعية والشخصية
Hotels and restaurants	11.7	14.6	23.5	17.2	66.9	المطاعم والفنادق
Education	46.9	69.4	96.7	98.2	311.2	التعليم
Health and social work	28.4	39.1	57.4	57.6	182.4	الصحة والعمل الاجتماعي
Public administration and defense	130.0	184.1	202.4	220.9	737.4	الإدارة العامة والدفاع
Households with employed persons	2.1	2.1	2.2	2.2	8.6	الخدمات المنزلية
Less: FISIM	-35.3	-34.7	-34.0	-34.4	-138.4	ناقص: خدمات الوساطة المالية المقاسة بصورة غير مباشرة
Plus: Customs duties	39.8	39.8	44.8	59.2	183.6	زائد: الرسوم الجمركية
Plus: VAT on imports, net	57.0	66.8	85.9	93.4	303.1	زائد: صافي ضريبة القيمة المضافة على الواردات
Quarterly Gross Domestic Product	908.3	1,027.5	1,103.2	1,111.6	4,150.6	الناتج المحلي الاجمالي الربعي

* Flash Estimates ** First Revision ***Second Revision

* تقديرات اولية (الاصدار الاول) ** التنقيح الاول *** التنقيح الثاني

جدول (2): نسبة مساهمة الأنشطة الاقتصادية في الناتج المحلي الإجمالي في باقي الضفة الغربية وقطاع غزة حسب النشاط الاقتصادي والربع للعام 2006 بالأسعار الثابتة: سنة الأساس 1997

Table (2): Percentage Contribution to GDP in Remaining West Bank and Gaza Strip by Economic Activity and Quarter for year 2006 at Constant Prices: (1997 is the base year)

Economic Activity	2006					النشاط الاقتصادي
	الربع الرابع* Q IV	الربع الثالث** Q III	الربع الثاني*** Q II	الربع الأول*** Q I	القيم السنوية* Annual Data	
Agriculture and fishing	10.2	7.9	8.1	6.4	8.0	الزراعة وصيد الاسماك
Mining, manufacturing, electr. and water	14.6	14.0	12.2	10.7	12.8	التعدين، الصناعة التحويلية والمياه والكهرباء
Mining and quarrying	0.5	0.5	0.4	0.4	0.4	التعدين واستغلال المحاجر
Manufacturing	12.2	11.7	10.2	9.0	10.7	الصناعة التحويلية
Electricity and water supply	1.9	1.8	1.6	1.3	1.7	امدادات المياه والكهرباء
Construction	2.7	2.4	2.5	2.5	2.5	الإنشاءات
Wholesale and retail trade	10.3	10.0	8.5	8.3	9.2	تجارة الجملة والتجزئة
Transport, Storage and Communications	12.6	11.3	10.4	10.9	11.2	النقل والتخزين والاتصالات
Financial intermediation	5.2	4.6	4.2	4.2	4.5	الوساطة المالية
Other services	23.1	24.7	26.9	26.2	25.3	الخدمات
Real estate, renting and business services	12.4	11.7	9.8	9.7	10.8	الأنشطة العقارية والإيجارية والتجارية
Community, social and personal services	1.1	1.1	1.0	1.0	1.0	أنشطة الخدمة المجتمعية والاجتماعية والشخصية
Hotels and restaurants	1.3	1.4	2.1	1.5	1.6	المطاعم والفنادق
Education	5.2	6.8	8.8	8.8	7.5	التعليم
Health and social work	3.1	3.7	5.2	5.2	4.4	الصحة والعمل الاجتماعي
Public administration and defense	14.3	17.9	18.3	19.9	17.8	الإدارة العامة والدفاع
Households with employed persons	0.2	0.2	0.2	0.2	0.2	الخدمات المنزلية
Less: FISIM	-3.9	-3.4	-3.1	-3.1	-3.3	ناقص: خدمات الوساطة المالية المقاسة بصورة غير مباشرة
Plus: Customs duties	4.4	3.9	4.1	5.3	4.4	زائد: الرسوم الجمركية
Plus: VAT on imports, net	6.3	6.5	7.7	8.3	7.3	زائد: صافي ضريبة القيمة المضافة على الواردات
Quarterly Gross Domestic Product	100	100	100	100	100	الناتج المحلي الإجمالي الربعي

* Flash Estimates ** First Revision ***Second Revision

* تقديرات أولية (الإصدار الأول) ** التفتيح الأول *** التفتيح الثاني

جدول (3): الناتج المحلي الاجمالي في باقي الضفة الغربية وقطاع غزة حسب النشاط الاقتصادي والربع للعامين 2005، 2006 بالاسعار الثابتة: سنة الاساس 1997
 Table (3): GDP in Remaining West Bank and Gaza Strip by Economic Activity and Quarter for the years 2005, 2006
 at Constant Prices: (1997 is the base year)

Value in million US\$

القيمة بالمليون دولار أمريكي

Economic Activity	2006				2005				النشاط الاقتصادي
	الربع الرابع Q IV	الربع الثالث** Q III	الربع الثاني*** Q II	الربع الاول*** Q I	الربع الرابع Q IV	الربع الثالث Q III	الربع الثاني Q II	الربع الاول Q I	
Agriculture and fishing	92.9	80.9	89.1	71.1	77.0	84.4	86.1	65.1	الزراعة وصيد الاسماك
Mining, manufacturing, electr. and water	133.0	144.2	134.6	119.3	134.1	143.9	142.1	144.7	التعدين، الصناعة التحويلية والمياه والكهرباء
Mining and quarrying	4.5	4.9	4.6	4.0	4.8	4.7	4.7	4.1	التعدين واستغلال المحاجر
Manufacturing	111.2	120.5	112.5	99.8	112.7	121.4	119.8	122.6	الصناعة التحويلية
Electricity and water supply	17.3	18.8	17.5	15.5	16.6	17.8	17.6	18.0	امدادات المياه والكهرباء
Construction	24.6	24.7	27.2	27.5	28.7	32.9	33.5	24.3	الانشاءات
Wholesale and retail trade	93.7	102.8	93.9	92.3	94.1	102.2	94.4	83.2	تجارة الجملة والتجزئة
Transport, Storage and Communications	114.0	115.8	114.5	121.7	115.1	113.9	115.1	117.4	النقل والتخزين والاتصالات
Financial intermediation	46.8	46.8	46.2	46.9	51.1	49.1	45.3	41.9	الوساطة المالية
Other services	209.7	254.2	296.4	291.5	286.9	284.4	263.1	265.8	الخدمات
Real estate, renting and business services	112.3	120.3	107.8	107.4	108.1	119.8	109.1	109.8	الانشطة العقارية والاجارية والتجارية
Community, social and personal services	10.4	10.8	11.0	11.1	10.6	11.0	10.4	11.2	أنشطة الخدمة المجتمعية والاجتماعية والشخصية
Hotels and restaurants	11.7	14.6	23.5	17.2	17.9	16.5	15.6	18.1	المطاعم والفنادق
Education	46.9	69.4	96.7	98.2	91.2	90.4	82.0	78.9	التعليم
Health and social work	28.4	39.1	57.4	57.6	59.1	46.7	46.0	47.8	الصحة والعمل الاجتماعي
Public administration and defense	130.0	184.1	202.4	220.9	231.2	208.7	178.6	177.6	الإدارة العامة والدفاع
Households with employed persons	2.1	2.1	2.2	2.2	2.0	2.2	2.1	2.2	الخدمات المنزلية
Less: FISIM	-35.3	-34.7	-34.0	-34.4	-36.0	-35.9	-34.7	-33.0	ناقص: خدمات الوساطة المالية المقاسة بصورة غير مباشرة
Plus: Customs duties	39.8	39.8	44.8	59.2	67.1	76.3	65.5	65.4	زائد: الرسوم الجمركية
Plus: VAT on imports, net	57.0	66.8	85.9	93.4	100.9	100.9	91.2	90.6	زائد: صافي ضريبة القيمة المضافة على الواردات
Gross Domestic Product	908.3	1,027.5	1,103.2	1,111.6	1,152.2	1,163.0	1,082.3	1,045.2	الناتج المحلي الاجمالي

* Flash Estimates

** First Revision, *** Second Revision

* تقديرات أولية (الإصدار الأول)

** التنقيح الأول، *** التنقيح الثاني

جدول (4): نصيب الفرد من الناتج المحلي الإجمالي خلال الأرباع الخاصة بالاعوام 2004-2006 بالأسعار الثابتة: سنة الأساس 1997
 Table (4): GDP Per Capita by the Quarters of years 2004- 2006 at Constant Prices: (1997 is the base year)

Value in US\$

القيمة بالدولار الأمريكي

Quarter \ Year	2006	2005	2004	السنة \ الربع
First Quarter	308.4	301.4	300.7	الربع الأول
Second Quarter	304.8	309.4	298.4	الربع الثاني
Third Quarter	281.5	329.6	331.8	الربع الثالث
Fourth Quarter	246.7	323.8	315.3	الربع الرابع
Annual Estimate	1,141.4	1,264.2	1,246.2	التقدير السنوي

جدول (5): الناتج المحلي الاجمالي في باقي الضفة الغربية وقطاع غزة حسب النشاط الاقتصادي للأعوام 1999-2006 بالاسعار الثابتة: سنة الاساس 1997

Table (5): GDP in Remaining West Bank and Gaza Strip by Economic Activity for the years 1999-2006 at Constant Prices: (1997 is the base year)

Value in million US\$

القيمة بالمليون دولار أمريكي

Economic Activity	*2006	**2005	2004	2003	2002	2001	2000	1999	النشاط الاقتصادي
Agriculture and fishing	334.0	312.6	319.0	311.2	269.6	350.1	388.0	470.7	الزراعة وصيد الاسماك
Mining, manufacturing, electr. and water	531.1	564.8	564.3	532.9	580.0	614.6	668.6	655.5	التعدين، الصناعة التحويلية والمياه والكهرباء
Mining and quarrying	18.0	18.3	17.5	17.0	33.0	28.9	32.6	35.7	التعدين واستغلال المحاجر
Manufacturing	444.0	476.5	477.7	450.7	476.3	504.6	570.2	566.4	الصناعة التحويلية
Electricity and water supply	69.1	70	69.1	65.2	70.7	81.1	65.8	53.4	امدادات المياه والكهرباء
Construction	104.0	119.4	103.7	96.9	67.5	85.5	270.4	616.9	الانشاءات
Wholesale and retail trade	382.7	373.9	359.0	340.4	350.0	414.8	519.2	537.8	تجارة الجملة والتجزئة
Transport, Storage and Communications	466.0	461.5	444.4	392.0	349.6	317.3	292.5	231.0	النقل والتخزين والاتصالات
Financial intermediation	186.8	187.4	170.0	158.9	149.9	138.1	191.5	169.1	الوساطة المالية
Other services	1,051.7	1,100.2	1,047.2	1,002.5	899.1	994.6	1055.7	990.8	الخدمات
Real estate, renting and business services	447.9	446.8	428.9	404.1	392.7	444.6	566.7	444.3	الانشطة العقارية والاجارية والتجارية
Community, social and personal services	43.3	43.2	43.3	42.5	33.2	29.3	32.2	28.3	أنشطة الخدمة المجتمعية والاجتماعية والشخصية
Hotels and restaurants	66.9	68.1	61.8	58.0	60.7	104.4	93.7	128.0	المطاعم والفنادق
Education	311.2	342.5	324.9	315.1	287.7	290.8	244.4	262.4	التعليم
Health and social work	182.4	199.6	188.3	182.8	124.8	125.5	118.7	127.8	الصحة والعمل الاجتماعي
Public administration and defense	737.4	796.1	736.4	694.7	578.1	628.9	559.3	497.7	الإدارة العامة والدفاع
Households with employed persons	8.6	8.5	8.6	8.4	8.2	7.7	9.1	8.7	الخدمات المنزلية
Less: FISIM	-138.4	-139.6	-124.9	-118.9	-109.6	-117.4	-154.4	-129.5	ناقص: خدمات الوساطة المالية المقاسة بصورة غير مباشرة
Plus: Customs duties	183.6	274.3	277.9	262.2	75.8	174.6	196.3	208.6	زائد: الرسوم الجمركية
Plus: VAT on imports, net	303.1	383.6	342.1	313.8	338.2	309.0	264.9	254.4	زائد: صافي ضريبة القيمة المضافة على الواردات
Gross Domestic Product	4,150.6	4,442.7	4,247.7	3,995.0	3,556.4	3,917.8	4,261.1	4,511.7	الناتج المحلي الاجمالي

* Flash Estimates

* تقديرات أولية (الإصدار الأول)

** First Revision

** التنقيح الأول

