



2009

/

2009

:1-1

2009

Table 1-1: Percentage of the Industrial Enterprises Witnessed an Improved Situation During the Reference Month Compared to that before the Reference Month for the Main Indicators in the Palestinian Territory 2009

Indicator	Reference Month									
	2009									2008
	أيلول Sep.	أب Aug.	تموز Jul.	حزيران Jun.	أيار May	نيسان Apr.	آذار Mar.	شباط Feb.	كانون ثاني Jan.	كانون أول Dec.
Enterprise performance in general	19.2	29.9	31.7	33.2	-	28.7	34.7	26.4	-	-
Obtaining needed raw materials and inputs	7.7	8.0	5.6	9.6	-	6.9	13.1	8.5	-	-
Reaching the employees for their work place	3.4	1.2	3.5	3.0	-	2.1	6.9	9.1	-	-
Regularity of work	7.4	7.1	8.2	9.9	-	6.0	10.7	10.0	-	-
Transporting finished goods to market	8.3	11.8	15.7	17.0	-	11.2	11.6	11.8	-	-

(-) No Data Available

(-)

:2-1

2009

Table 1-2: Percentage of Industrial Enterprises Witnessed an Improved Situation During the Reference Month Compared to that before the Reference Month for the Main Indicators in the West Bank 2009

Indicator	Reference Month									
	2009									2008
	أيلول Sep.	أب Aug.	تموز Jul.	حزيران Jun.	أيار May	نيسان Apr.	آذار Mar.	شباط Feb.	كانون ثاني Jan.	كانون أول Dec.
Enterprise performance in general	19.1	29.7	32.7	33.9	35.1	28.9	36.7	21.6	17.4	16.7
Obtaining needed raw materials and inputs	7.8	8.1	5.8	9.8	8.9	6.7	13.5	7.0	10.7	7.0
Reaching the employees for their work place	3.6	1.2	3.7	3.1	2.9	2.2	7.1	3.8	4.3	3.1
Regularity of work	6.9	6.5	8.6	9.4	9.9	5.1	11.5	5.1	6.1	3.5
Transporting finished goods to market	8.5	12.1	16.5	17.7	15.5	11.3	12.1	7.6	7.7	5.4

2009

Table 1-3: Percentage of Industrial Enterprises Witnessed an Improved Situation During the Reference Month Compared to that before the Reference Month for the Main Indicators in Gaza Strip 2009

Indicator	Reference Month									
	2009									2008
	أيلول Sep.	أب Aug.	تموز Jul.	حزيران Jun.	أيار May	نيسان Apr.	آذار Mar.	شباط Feb.	كانون ثاني Jan.	كانون أول Dec.
Enterprise performance in general	22.3	33.4	11.8	22.2	-	26.3	8.7	84.6	-	-
Obtaining needed raw materials and inputs	5.6	6.7	:	5.6	-	10.6	8.7	26.9	-	-
Reaching the employees for their work place	:	:	:	:	-	:	4.3	73.1	-	-
Regularity of work	16.7	20.0	:	16.7	-	21.1	0.0	69.2	-	-
Transporting finished goods to market	5.6	6.7	:	5.6	-	10.6	4.3	61.6	-	-

(-) No Data Available

(-)

(:) No Observations in the Sample

(:)

2009

2009

/

:1-2

Table 2-1: Percentage Distribution of Owners/ Managers of the Industrial Enterprises According to Their Opinions of Main Indicators During September 2009 Compared to August 2009 in the Palestinian Territory

Problem	Total	Not Exist	Much Worse	Somewhat Worse	/ About the Same/ Unchanged	Somewhat Better	Much Better
Enterprise performance in general	100	:	4.3	38.8	37.7	16.8	2.4
Production situation	100	1.2	4.6	41.9	31.2	19.0	2.1
Employees productivity	100	0.9	4.9	40.0	35.8	16.6	1.8
Obtaining needed raw materials and inputs	100	0.6	0.9	8.9	81.9	6.5	1.2
Reaching the employees for their work place	100	0.3	:	0.6	95.7	1.2	2.2
Regularity of work	100	:	0.6	20.6	71.4	5.2	2.2
Transporting finished goods to market	100	1.8	0.9	16.6	72.4	7.4	0.9
Financial situations	100	:	3.7	27.1	56.0	12.6	0.6
Banks credits & facilities	100	28.9	0.3	3.4	64.9	2.2	0.3
Level of employment	100	:	1.8	13.5	74.0	9.8	0.9
Value of sales	100	0.6	5.8	43.1	29.1	20.5	0.9

(:) No Observations in the Sample

(:)

Table 2-2: Percentage Distribution of Owners/ Managers of the Industrial Enterprises According to Their Opinions of Main Indicators During September 2009 Compared to August 2009 in the West Bank

Problem	Total	Not Exist	Much Worse	Somewhat Worse	/ About the Same/ Unchanged	Somewhat Better	Much Better
Enterprise performance in general	100	:	4.5	40.8	35.6	16.8	2.3
Production situation	100	:	4.9	44.0	30.1	19.1	1.9
Employees productivity	100	:	5.2	42.3	33.2	17.3	2.0
Obtaining needed raw materials and inputs	100	:	1.0	8.8	82.4	6.5	1.3
Reaching the employees for their work place	100	:	:	0.7	95.7	1.3	2.3
Regularity of work	100	:	0.7	21.5	70.9	4.6	2.3
Transporting finished goods to market	100	0.3	1.0	17.6	72.6	7.5	1.0
Financial situations	100	:	3.9	28.7	54.6	12.1	0.7
Banks credits & facilities	100	26.7	0.3	3.6	66.8	2.3	0.3
Level of employment	100	:	2.0	13.7	73.5	9.8	1.0
Value of sales	100	0.3	6.1	45.3	27.3	20.4	0.6

(:) No Observations in the Sample

(:)

Table 2-3: Percentage Distribution of Owners/ Managers of the Industrial Enterprises According to Their Opinions of Main Indicators During September 2009 Compared to August 2009 in Gaza Strip

Problem	Total	Not Exist	Much Worse	Somewhat Worse	/ About the Same/ Unchanged	Somewhat Better	Much Better
Enterprise performance in general	100	:	:	5.6	72.1	16.7	5.6
Production situation	100	22.2	:	5.6	49.9	16.7	5.6
Employees productivity	100	16.7	:	:	77.7	5.6	:
Obtaining needed raw materials and inputs	100	11.1	:	11.1	72.2	5.6	:
Reaching the employees for their work place	100	5.6	:	:	94.4	:	:
Regularity of work	100	:	:	5.6	77.7	16.7	:
Transporting finished goods to market	100	27.8	:	:	66.6	5.6	:
Financial situations	100	:	:	:	77.8	22.2	:
Banks credits & facilities	100	66.7	:	:	33.3	:	:
Level of employment	100	:	:	11.1	77.8	11.1	:
Value of sales	100	5.6	:	5.6	61.0	22.2	5.6

(:) No Observations in the Sample

(:)

Table 3: Percentage of Industrial Enterprises Witnessed an Improved Situation During the Reference Month (September 2009) Compared to that before the Reference Month for the Main Indicators by Region

Indicator	Gaza Strip	West Bank	Palestinian Territory	
Employees productivity	5.6	19.3	18.4	
Financial situations	22.2	12.8	13.2	
Banks credits & facilities	:	2.6	2.5	
Level of employment	11.1	10.8	10.7	
Value of sales	27.8	21.0	21.4	

(:) No Observations in the Sample

(:)

/

:4

2009

Table 4: Percentage Distribution of Owners/Managers of the Active Industrial Enterprises According to the Reasons for Sales Level Stability or Decline by Region During September 2009

Reason	Gaza Strip	West Bank	Palestinian Territory	
Decrease in demand	100.0	24.1	24.5	
Difficulties in exporting finished goods	:	1.9	1.9	
Decline in the consumer purchasing power	:	27.2	27.1	
Product Marketing Obstacles	:	0.6	0.6	()
Competence product	:	2.5	2.5	
Seasonally related	:	7.0	6.9	
Military check points/ israeli actions/ closures	:	1.3	1.3	/ /
Other	:	35.4	35.2	
Total	100	100	100	

(:) No Observations in the Sample

(:)

(-) No Data Available

(-)

2009

:5

Table 5: Percentage Distribution of the Active Industrial Enterprises According to the Employment Mobility During September 2009 by Region

Employment Mobility	Gaza Strip	West Bank	Palestinian Territory	
Hiring employees	5.6	12.0	11.7	
Firing employees	5.6	9.7	9.5	
No change	88.8	78.3	78.8	
Total	100	100	100	

2009

/

:6

Table 6: Percentage Distribution of the Existing of Competition Against the Main Product According to the Owners\ Managers of the Active Industrial Enterprises During September 2009 by Region

Competence existence	Gaza Strip	West Bank	Palestinian Territory	
There is competition	72.2	93.2	92.0	
There is no competition	27.8	6.8	8.0	
Total	100	100	100	

2009

/

:7

Table 7: Percentage Distribution of the Type of Competition According to the Owners\ Managers of the Active Industrial Enterprises During September 2009 by Region

Type of competence	Gaza Strip	West Bank	Palestinian Territory	
Local	92.3	47.3	49.2	
Foreign	7.7	13.5	13.3	
Both	:	39.2	37.5	
Total	100	100	100	

(:) No Observations in the Sample

(:)

Table 8: Expectations of Owners/ Managers of the Active Industrial Enterprises for the Month that Follows the Reference Month Compared to the Reference Month (September, 2009) for the Main Indicators by Region

Indicator	Reference Month									
	2009									2008
	أيلول Sep.	آب Aug.	تموز Jul.	حزيران Jun.	أيار May	نيسان Apr.	آذار Mar.	شباط Feb.	كانون ثاني Jan.	كانون أول Dec.
Percentage of who are expecting better Enterprise situation										
Palestinian Territory	53.2	28.1	32.3	37.9	-	38.7	38.7	33.9	33.4	-
West Bank	55.7	28.5	33.6	38.8	44.1	39.4	38.8	37.1	29.1	26.5
Gaza Strip	11.1	20.0	5.9	22.2	-	26.3	39.1	65.3	85.1	-
Percentage of who are expecting higher employment level										
Palestinian Territory	20.4	11.3	11.9	11.3	-	13.3	12.8	18.1	17.0	-
West Bank	20.7	10.5	12.5	11.0	17.5	12.8	12.1	14.4	11.0	11.2
Gaza Strip	16.7	26.7	:	16.7	-	21.1	21.7	61.5	88.8	-
Percentage of who are expecting higher sales volume										
Palestinian Territory	50.7	27.8	32.9	38.2	-	37.5	36.9	39.3	34.8	-
West Bank	53.4	28.2	34.2	39.4	42.7	38.5	36.4	37.1	29.7	28.1
Gaza Strip	5.6	20.0	5.9	16.7	-	21.1	43.4	65.3	96.3	-

(-) No Data Available

(:) No Observations in the Sample

(-)

(:) تعني لا يوجد مشاهدات بالعينة

Table 9: Expectations of Owners/ Managers of the Active Industrial Enterprises for the Six Months that Follow the Reference Month Compared to the Reference Month (September, 2009) for the Main Indicators by Region

Indicator	Reference Month									
	2009									2008
	أيلول Sep.	أب Aug.	تموز Jul.	حزيران Jun.	أيار May	نيسان Apr.	آذار Mar.	شباط Feb.	كانون ثاني Jan.	كانون أول Dec.
Percentage of who are expecting better Enterprise situation										
Palestinian Territory	56.2	48.7	44.4	51.1	-	53.2	39.1	56.8	62.3	-
West Bank	57.8	49.1	45.5	51.1	49.0	53.8	60.2	55.7	60.5	50.2
Gaza Strip	27.8	40.0	5.9	50.0	-	42.1	39.1	69.1	85.2	-
Percentage of who are expecting higher employment level										
Palestinian Territory	26.6	19.3	21.5	24.8	-	26.9	21.7	28.5	36.0	-
West Bank	26.6	18.7	22.6	24.6	24.5	27.0	28.8	25.5	31.6	18.9
Gaza Strip	27.8	33.3	:	27.8	-	26.3	26.1	65.4	88.9	-
Percentage of who are expecting higher sales volume										
Palestinian Territory	55.3	48.5	44.8	51.7	-	54.1	43.4	56.5	62.9	-
West Bank	56.5	48.6	46.8	51.4	48.4	54.8	58.8	55.8	60.2	52.7
Gaza Strip	33.3	46.7	5.9	55.6	-	42.1	43.4	65.4	96.3	-

(-) No Data Available

(:) No Observations in the Sample

(-)

(:) تعني لا يوجد مشاهدات بالعينة

(2009)

/ :10

Table 10: Expectations of Owners/ Managers of the Active Industrial Enterprises about Better Expectations for their Enterprises for the Month that Follows the Reference Month (September, 2009) Compared to the Reference Month by Region

Indicator	Gaza Strip	West Bank	Palestinian Territory	
Enterprise performance in general	11.1	54.7	52.3	
Employees productivity	:	50.5	47.7	
Obtaining needed raw materials and inputs	16.7	11.1	11.4	
Reaching the employees for their work place	:	7.5	7.1	
Regularity of work	16.7	24.8	24.4	
Transporting finished goods to market	:	24.5	23.1	
Financial situations	16.7	36.9	35.8	
Banks credits & facilities	5.6	3.9	4.0	

(:) No Observations in the Sample

(:)

Table 11: Expectations of Owners/ Managers of the Active Industrial Enterprises about Better Expectations for their Enterprises for the Six Months that Follow the Reference Month (September, 2009) Compared to the Reference Month for the Main Indicators by Region

Indicator	Gaza Strip	West Bank	Palestinian Territory	
Enterprise performance in general	38.9	56.5	55.6	
Employees productivity	:	53.6	50.6	
Obtaining needed raw materials and inputs	33.3	11.5	12.7	
Reaching the employees for their work place	:	6.9	6.5	
Regularity of work	27.8	27.4	27.4	
Transporting finished goods to market	:	28.8	27.2	
Financial situations	33.3	40.7	40.3	
Banks credits & facilities	11.1	5.0	5.3	

(:) No Observations in the Sample

(:)

(2009)

/

:1-12

Table 12-1: Percentage Distribution of Owners/ Managers of the Active Industrial Enterprises According to Their Opinions of Main Indicators for the Month that Follows the Reference Month (September, 2009) Compared to the Reference Month in the Palestinian Territory

Indicator	Total	Not Exist	Much Worse	Somewhat Worse	/ About the Same/ Unchanged	Somewhat Better	Much Better	
Enterprise performance in general	100	:	0.9	12.2	34.6	50.5	1.8	
Production situation	100	0.9	0.6	13.1	32.2	51.1	2.1	
Volume of sales	100	0.6	0.6	13.8	34.3	49.2	1.5	
Employees productivity	100	0.3	0.6	12.0	39.4	46.2	1.5	
Obtaining needed raw materials and inputs	100	0.3	:	2.5	85.8	10.8	0.6	
Reaching the employees for their work place	100	0.3	:	1.5	91.1	6.5	0.6	
Regularity of work	100	:	0.3	4.3	71.0	23.8	0.6	
Level of employment	100	:	0.3	4.0	75.3	19.5	0.9	
Transporting finished goods to market	100	1.5	:	4.6	70.8	22.5	0.6	
Financial situations	100	:	0.6	7.4	56.2	34.6	1.2	
Banks credits & facilities	100	28.3	:	0.3	67.4	3.7	0.3	

(:) No Observations in the Sample

(:)

(2009)

/

:2-12

Table 12-2: Percentage Distribution of Owners/ Managers of the Active Industrial Enterprises According to Their Opinions of Main Indicators for the Month that Follows the Reference Month (September, 2009) Compared to the Reference Month in the West Bank

Indicator	Total	Not Exist	Much Worse	Somewhat Worse	/ About the Same/ Unchanged	Somewhat Better	Much Better	
Enterprise performance in general	100	:	1.0	12.3	32.0	52.8	1.9	
Production situation	100	:	0.6	13.3	30.4	53.4	2.3	
Volume of sales	100	:	0.6	13.9	32.1	51.8	1.6	
Employees productivity	100	:	0.7	12.4	36.4	48.9	1.6	
Obtaining needed raw materials and inputs	100	:	:	2.6	86.3	10.4	0.7	
Reaching the employees for their work place	100	0.3	:	1.3	90.8	6.9	0.7	
Regularity of work	100	:	0.3	4.2	70.6	24.2	0.7	
Level of employment	100	:	0.3	3.9	75.1	19.7	1.0	
Transporting finished goods to market	100	:	:	4.9	70.5	23.9	0.7	
Financial situations	100	:	0.7	7.5	54.9	35.6	1.3	
Banks credits & facilities	100	26.7	:	0.3	69.1	3.6	0.3	

(:) No Observations in the Sample

(:)

Table 12-3: Percentage Distribution of Owners/ Managers of the Active Industrial Enterprises According to Their Opinions of Main Indicators for the Month that Follows the Reference Month (September, 2009) Compared to the Reference Month in Gaza Strip

Indicator	Total	Not Exist	Much Worse	Somewhat Worse	/ About the Same/ Unchanged	Somewhat Better	Much Better	
Enterprise performance in general	100	:	:	11.1	77.8	11.1	:	
Production situation	100	16.7	:	11.1	61.1	11.1	:	
Volume of sales	100	11.1	:	11.1	72.2	5.6	:	
Employees productivity	100	5.6	:	5.6	88.8	:	:	
Obtaining needed raw materials and inputs	100	5.6	:	:	77.7	16.7	:	
Reaching the employees for their work place	100	:	:	5.6	94.4	:	:	
Regularity of work	100	:	:	5.6	77.7	16.7	:	
Level of employment	100	:	:	5.6	77.7	16.7	:	
Transporting finished goods to market	100	27.8	:	:	72.2	:	:	
Financial situations	100	:	:	5.6	77.7	16.7	:	
Banks credits & facilities	100	55.6	:	:	38.8	5.6	:	

(:) No Observations in the Sample

(:)

(2009)

/

:1-13

Table 13-1: Percentage Distribution of Owners/ Managers of the Active Industrial Enterprises According to Their Opinions of Main Indicators During the Next Six Months Compared to Reference Month (September, 2009) in the Palestinian Territory

Indicator	Total	Not Exist	Much Worse	Somewhat Worse	/ About the Same/ Unchanged	Somewhat Better	Much Better	
Enterprise performance in general	100	:	2.2	16.0	26.2	52.2	3.4	
Production situation	100	0.9	1.9	16.4	24.6	52.5	3.7	
Volume of sales	100	0.6	1.9	17.9	24.3	51.9	3.4	
Employees productivity	100	0.3	1.6	16.1	31.4	47.2	3.4	
Obtaining needed raw materials and inputs	100	0.3	:	2.8	84.2	9.6	3.1	
Reaching the employees for their work place	100	0.3	:	0.9	92.3	4.0	2.5	
Regularity of work	100	:	0.6	5.0	67.0	24.9	2.5	
Level of employment	100	:	0.6	4.1	68.7	24.1	2.5	
Transporting finished goods to market	100	1.6	0.3	4.7	66.2	24.7	2.5	
Financial situations	100	:	1.9	7.2	50.6	37.8	2.5	
Banks credits & facilities	100	28.7	:	0.3	65.8	4.0	1.2	

(:) No Observations in the Sample

(:)

Table 13-2: Percentage Distribution of Owners/ Managers of the Active Industrial Enterprises According to Their Opinions of Main Indicators During the Next Six Months Compared to Reference Month (September, 2009) in the West Bank

Indicator	Total	Not Exist	Much Worse	Somewhat Worse	/ About the Same/ Unchanged	Somewhat Better	Much Better	
Enterprise performance in general	100	:	2.3	16.7	24.5	52.9	3.6	
Production situation	100	:	2.0	17.0	23.2	53.9	3.9	
Volume of sales	100	:	2.0	18.6	22.9	52.9	3.6	
Employees productivity	100	:	1.6	16.8	28.0	50.0	3.6	
Obtaining needed raw materials and inputs	100	:	:	3.0	85.5	8.2	3.3	
Reaching the employees for their work place	100	0.3	:	1.0	91.8	4.3	2.6	
Regularity of work	100	:	0.7	5.0	66.9	24.8	2.6	
Level of employment	100	:	0.7	4.0	68.7	23.9	2.7	
Transporting finished goods to market	100	:	0.3	5.0	65.9	26.2	2.6	
Financial situations	100	:	2.0	7.3	50.0	38.1	2.6	
Banks credits & facilities	100	27.1	:	0.3	67.7	3.6	1.3	

(:) No Observations in the Sample

(:)

Table 13-3: Percentage Distribution of Owners/ Managers of the Active Industrial Enterprises According to Their Opinions of Main Indicators During the Next Six Months Compared to Reference Month (September, 2009) in Gaza Strip

Indicator	Total	Not Exist	Much Worse	Somewhat Worse	/ About the Same/ Unchanged	Somewhat Better	Much Better	
Enterprise performance in general	100	:	:	5.6	55.5	38.9	:	
Production situation	100	16.7	:	5.6	49.9	27.8	:	
Volume of sales	100	11.1	:	5.6	50.0	33.3	:	
Employees productivity	100	5.6	:	5.6	88.8	:	:	
Obtaining needed raw materials and inputs	100	5.6	:	:	61.1	33.3	:	
Reaching the employees for their work place	100	:	:	:	100.0	:	:	
Regularity of work	100	:	:	5.6	66.6	27.8	:	
Level of employment	100	:	:	5.6	66.6	27.8	:	
Transporting finished goods to market	100	27.8	:	:	72.2	:	:	
Financial situations	100	:	:	5.6	61.1	33.3	:	
Banks credits & facilities	100	55.6	:	:	33.3	11.1	:	

(:) No Observations in the Sample

(:) تعني لا يوجد مشاهدات بالعينة

Table 14: Percentage Distribution of Owners/Managers of the Industrial Enterprises Opinion About the Factors Affecting Production Cost During the Third Quarter 2009 by Region

Factors		Opinion						
		No effect	Relatively weak effect	Weak effect	Relatively large effect	Large effect		
Foreign competition	Palestinian Territory	31.4	10.1	14.4	24.5	19.6		
	West bank	29.1	10.7	14.9	24.6	20.7		
	Gaza strip	72.2	:	5.6	22.2	:		
Informal Sector	Palestinian Territory	30.3	10.1	30.6	18.0	11.0		
	West bank	27.2	10.7	32.4	18.4	11.3		
	Gaza strip	83.3	:	:	11.1	5.6		
Local Competition	Palestinian Territory	14.3	4.3	19.6	35.8	26.0		
	West bank	13.3	3.9	19.7	36.2	26.9		
	Gaza strip	33.3	11.1	16.7	27.8	11.1		
Transport cost	Palestinian Territory	11.6	8.0	20.8	38.8	20.8		
	West bank	9.0	8.4	21.7	39.2	21.7		
	Gaza strip	55.5	:	5.6	33.3	5.6		
Political situation	Palestinian Territory	7.6	4.0	20.5	43.7	24.2		
	West bank	7.0	4.2	21.4	44.7	22.7		
	Gaza strip	16.6	:	5.6	27.8	50.0		
Costs of raw materials and inputs	Palestinian Territory	5.2	3.4	10.1	33.3	48.0		
	West bank	4.1	3.6	10.7	34.0	47.6		
	Gaza strip	22.2	:	:	22.2	55.6		

(:) No Observations in the Sample

(:) تعني لا يوجد مشاهدات بالعينة

2009

/

:15

Table 15: Percentage Distribution of the Frequency of Loans Requested From the Banks According to the Owners/Managers of the Industrial Enterprises Opinion During the Third Quarter 2009 by Region

Frequency	Gaza Strip	West Bank	Palestinian Territory	
No loan request	100.0	93.3	93.6	
Once	:	6.1	5.8	
2-5	:	0.6	0.6	5-2
Total	100	100	100	

(:) No Observations in the Sample

(:)

Table 16: Percentage Distribution of Owners/ Managers of the Industrial Enterprises According to Their Views About the Export Obstacles During the Third Quarter 2009 by Region

Problems	Region	Not applicable	I don't know	Large difficulty	Medium difficulty	Small difficulty	No difficulty		
Commitment to international market requirements	Palestinian Territory	-	-	-	-	-	-		
	West bank	0.8	:	2.2	4.4	11.0	81.6		
	Gaza strip	:	:	:	:	:	:		
Commitment to export market packaging requirements	Palestinian Territory	:	:	:	:	:	:		
	West bank	2.2	0.7	1.5	2.2	6.6	86.8		
	Gaza strip	:	:	:	:	:	:		
Price competition in the export market	Palestinian Territory	:	:	:	:	:	:		
	West bank	1.5	:	2.2	13.3	21.5	61.5		
	Gaza strip	:	:	:	:	:	:		
Compliance to quantity demanded and delivery time	Palestinian Territory	:	:	:	:	:	:		
	West bank	:	:	1.5	3.7	7.4	87.4		
	Gaza strip	:	:	:	:	:	:		
Export financing	Palestinian Territory	:	:	:	:	:	:		
	West bank	:	0.7	:	6.6	7.4	85.3		
	Gaza strip	:	:	:	:	:	:		
Marketing ability	Palestinian Territory	:	:	:	:	:	:		
	West bank	2.9	0.7	2.2	3.7	23.5	70.0		
	Gaza strip	:	:	:	:	:	:		
Regular achievement of raw materials	Palestinian Territory	:	:	:	:	:	:		
	West bank	3.7	:	2.2	5.9	22.8	65.4		
	Gaza strip	-	-	-	-	-	-		

(-) No Data Available

(:) No Observations in the Sample

(-)

(:)

Table 16 (Cont): Percentage Distribution of Owners/ Managers of the Industrial Enterprises According to Their Views About the Export Obstacles During the Third Quarter 2009 by Region

Problems	Region	Not applicable	I don't know	Large difficulty	Medium difficulty	Small difficulty	No difficulty		
Regular achievement of export	Palestinian Territory	-	-	-	-	-	-		
	West bank	:	:	1.5	8.1	38.2	52.2		
	Gaza strip	:	:	:	:	:	:		
Regular achievement of employee	Palestinian Territory	:	:	:	:	:	:		
	West bank	3.0	:	0.7	:	4.4	91.9		
	Gaza strip	:	:	:	:	:	:		
Palestinian export regulation and license	Palestinian Territory	:	:	:	:	:	:		
	West bank	:	1.5	2.2	2.9	10.3	83.1		
	Gaza strip	:	:	:	:	:	:		
Information access to the foreign market	Palestinian Territory	:	:	:	:	:	:		
	West bank	0.8	2.2	4.4	2.9	25.0	64.7		
	Gaza strip	:	:	:	:	:	:		
Traveling problems imposed on entering foreign markets	Palestinian Territory	:	:	:	:	:	:		
	West bank	2.3	0.7	8.8	5.9	21.3	61.0		
	Gaza strip	:	:	:	:	:	:		
Import regulation in the foreign market	Palestinian Territory	:	:	:	:	:	:		
	West bank	2.8	1.5	3.7	5.9	34.6	51.5		
	Gaza strip	:	:	:	:	:	:		
Costumer payment guarantee	Palestinian Territory	:	:	:	:	:	:		
	West bank	:	1.5	10.3	12.5	23.5	52.2		
	Gaza strip	-	-	-	-	-	-		

(-) No Data Available

(:) No Observations in the Sample

(-)

(:)

2009

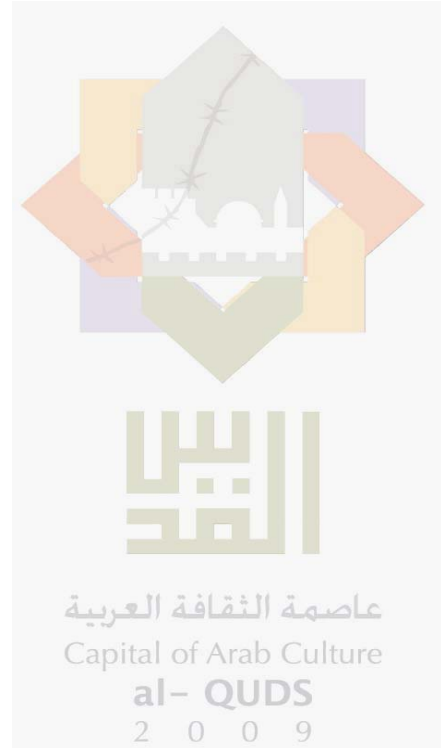
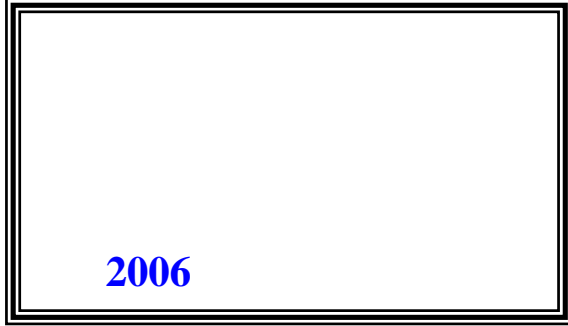
:17

Table 17: Percentage of Mechanism of Finding Customers in the Export Market During the Third Quarter 2009 by Region

Approaching Customers	Gaza Strip	West Bank	Palestinian Territory	
Market researches	-	16.9	-	
Information gathered from commerce chamber industrial union etc...	-	11.0	-	
Participate in international exhibitions and organized business missions	-	20.6	-	
Self-organized visits to the export market	-	40.4	-	
Personal relationships and contacts	-	91.9	-	
Through internet	-	16.9	-	
Customer self initiative	-	72.8	-	

(-) No Data Available

(-)



© 1430 - 2009.

:

/

2009.

2009

1647 . . -

: (970/972) 2 2982700

: (970/972) 2 2982710

: diwan@pcbs.gov.ps

: <http://www.pcbs.gov.ps>

5

/

2009

9

/
2009

/ 55
/ 2009 2009/10/23-03
55 358
2007
%70
.2007

2009 **.1**

1-1
أيلول 2009 / %19.2
.(%22.3 %19.1) 2009

2-1

%91.4
%77.8 %92.3 2009
%88.4
%80.4 . %83.4 %88.8
%82.6
.(%44.5

3-1

%93.6 2009
%5.8 (%100 %93.3)
%0.6
5-2

.2

1-2
: / %27.1
%100 2009
/ .2009

%47.8

%46.3 2009

%36.0

:

3-2

/ %92.0

%49.2 .(%72.2 %93.2)

%47.3) /

%13.5) %13.3 (%92.3

.(%7.7

:

4-2

/ %9.5

%78.8 (%5.6 %9.7) 2009

.(%88.8 %78.3)

.3

1-3

-

/

/ %53.2 -(2009)

.(%11.1 %55.7)

/

%16.7 %20.7) %20.4 2009

/ %50.7 .(

.(%5.6 %53.4) 2009

2-3

()

%56.2

(%27.8 %57.8)

%27.8 %26.6) %26.6

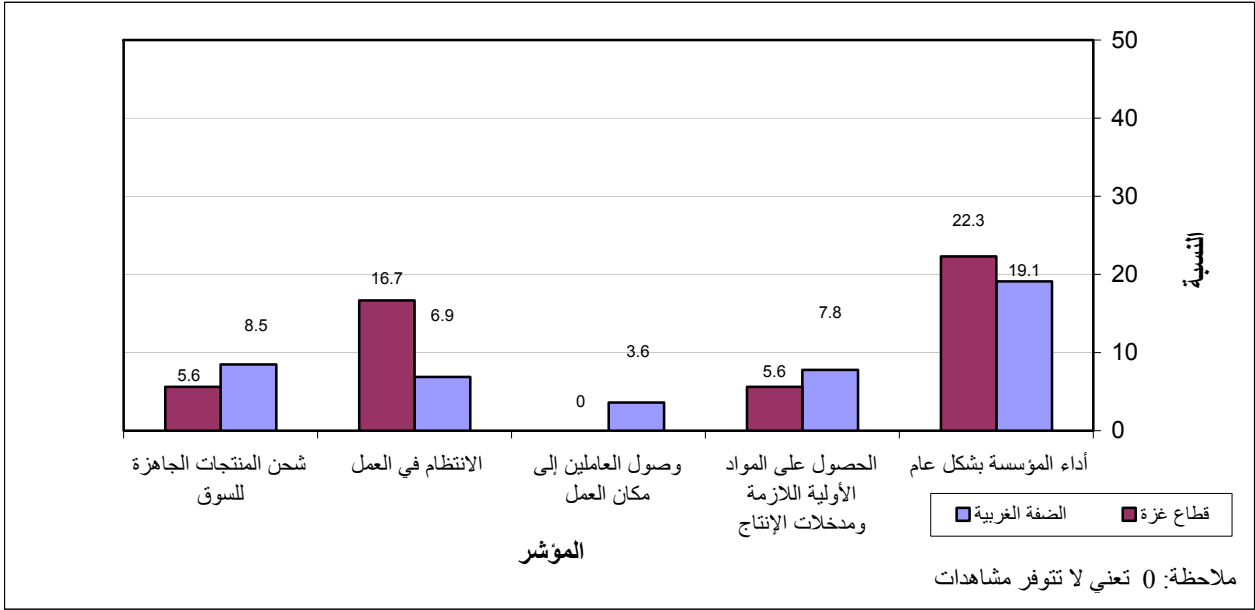
/ %55.3 (

%56.5)

.(%33.3

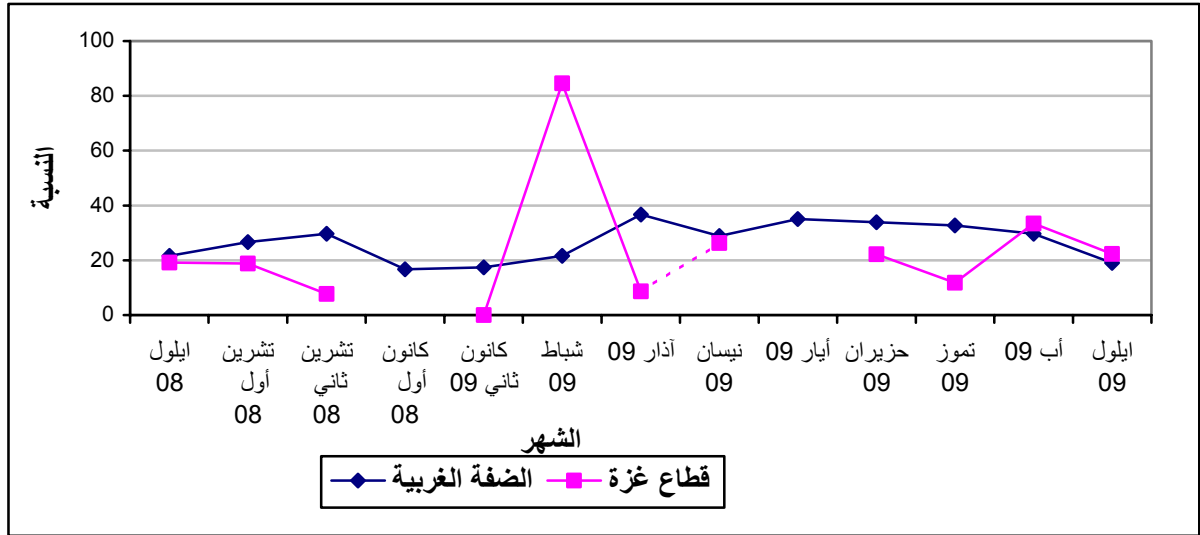
2009

:1



(2009)

:2



.2009

2008

*