



2009

/

2010

2006

.2010 - 1431 ©

:

/

.2010

2009

-

:

- 1647 . .

(970/972) 2 2982700 :

(970/972) 2 2982710 :

diwan@pcbs.gov.ps :

<http://www.pcbs.gov.ps> :

5

/

2009

9

2009

58
/ 2009 2009/12/23-03
55 358
2007
%70
.2007

2009

.1

1-1

كانون أول 2009 / %28.8
.(%20.5 %29.3) 2009

2-1

%91.5

%82.1

%92.1

2009

%89.8

%84.6

%90.1

3-1

%5.5 (%100 %93.6 2009 %93.2)
%0.9

5-2

.2

1-2

%23.1 2009 / %32.9

.2009

2-2

%54.7

2009

%50.1

%47.9

: **3-2**

/ %92.9

%53.9 .(%75.6 %94.0)

%52.9) /

%14.7) %15.1 (%74.6

.(%23.7

: **4-2**

/ %10.0

%80.9 (%5.1 %10.3) 2009

.(%88.5 %80.4)

.3

1-3

- /

/ %41.3 -(2009)

.(%23.1 %42.4)

/

%17.9 %13.6) %13.9 2010

/ %40.2 .(

.(%21.8 %41.4) 2010

2-3

()

%58.3

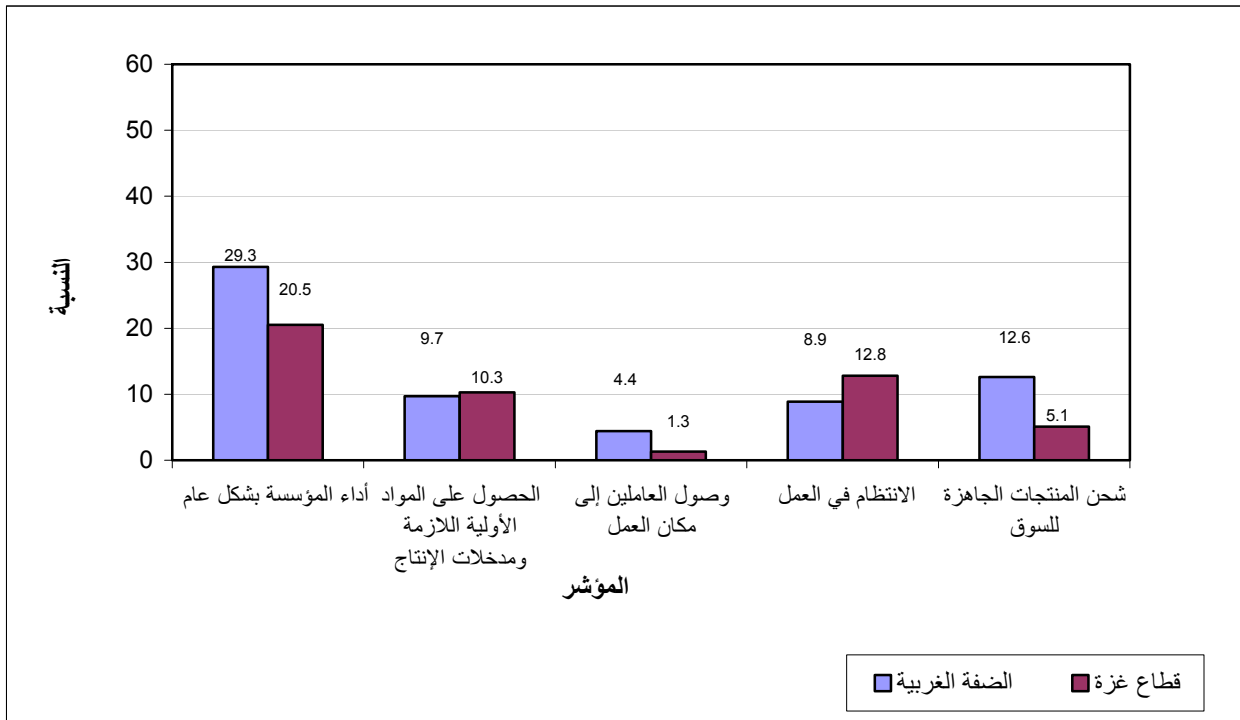
(%37.2 %59.7)

%26.9 %26.7) %26.7

/ %58.2 (

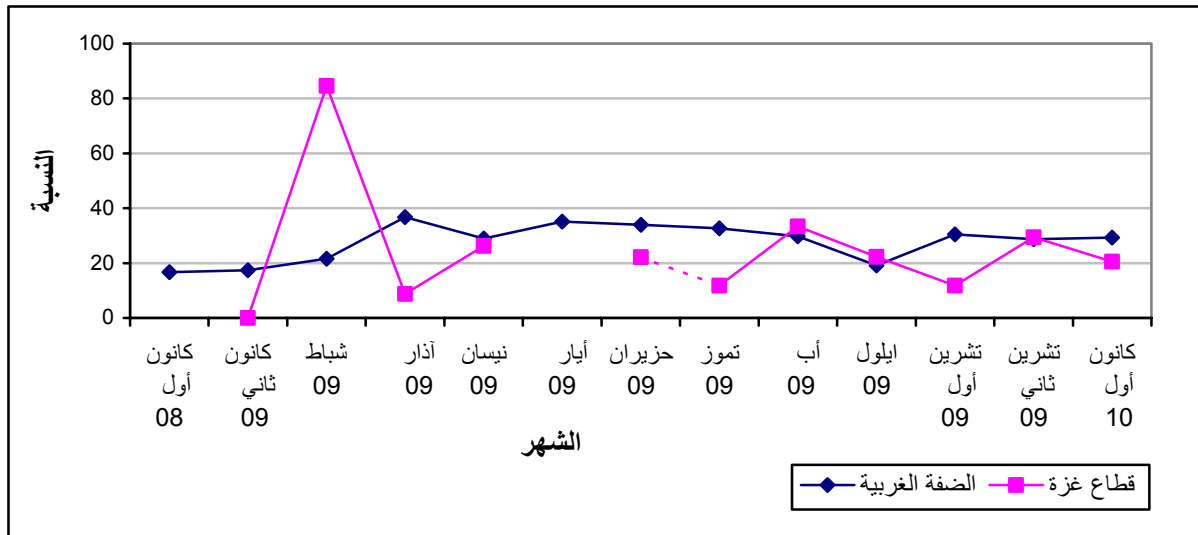
%59.2)

.(%42.3



(2009 - 2009)

:2



*

:1-1

2009

Table 1-1: Percentage of the Industrial Enterprises Witnessed an Improved Situation During the Reference Month Compared to that before the Reference Month for the Main Indicators in the Palestinian Territory 2009

Indicator	Reference Month									
	2009									
	كانون أول Dec.	تشرين ثاني Nov.	تشرين أول Oct.	أيلول Sep.	آب Aug.	تموز Jul.	حزيران Jun.	أيار May	نيسان Apr.	آذار Mar.
Enterprise performance in general	28.8	28.7	29.5	19.2	29.9	31.7	33.2	-	28.7	34.7
Obtaining needed raw materials and inputs	9.7	9.7	5.5	7.7	8.0	5.6	9.6	-	6.9	13.1
Reaching the employees for their work place	4.3	3.6	2.2	3.4	1.2	3.5	3.0	-	2.1	6.9
Regularity of work	9.2	10.3	9.6	7.4	7.1	8.2	9.9	-	6.0	10.7
Transporting finished goods to market	12.2	16.9	8.3	8.3	11.8	15.7	17.0	-	11.2	11.6

(-) No Data Available

(-)

:2-1

2009

Table 1-2: Percentage of Industrial Enterprises Witnessed an Improved Situation During the Reference Month Compared to that before the Reference Month for the Main Indicators in West Bank 2009

Indicator	Reference Month									
	2009									
	كانون أول Dec	تشرين ثاني Nov.	تشرين أول Oct.	أيلول Sep.	آب Aug.	تموز Jul.	حزيران Jun.	أيار May	نيسان Apr.	آذار Mar.
Enterprise performance in general	29.3	28.6	30.4	19.1	29.7	32.7	33.9	35.1	28.9	36.7
Obtaining needed raw materials and inputs	9.7	9.9	5.5	7.8	8.1	5.8	9.8	8.9	6.7	13.5
Reaching the employees for their work place	4.4	3.8	2.3	3.6	1.2	3.7	3.1	2.9	2.2	7.1
Regularity of work	8.9	9.6	9.8	6.9	6.5	8.6	9.4	9.9	5.1	11.5
Transporting finished goods to market	12.6	17.2	8.9	8.5	12.1	16.5	17.7	15.5	11.3	12.1

2009

Table 1-3: Percentage of Industrial Enterprises Witnessed an Improved Situation During the Reference Month Compared to that before the Reference Month for the Main Indicators in Gaza Strip 2009

Indicator	Reference Month									
	2009									
	كانون اول Dec.	تشرين ثاني Nov.	تشرين أول Oct.	أيلول Sep.	أب Aug.	تموز Jul.	حزيران Jun.	أيار May	نيسان Apr.	آذار Mar.
Enterprise performance in general	20.5	29.4	11.8	22.3	33.4	11.8	22.2	-	26.3	8.7
Obtaining needed raw materials and inputs	10.3	5.9	5.9	5.6	6.7	:	5.6	-	10.6	8.7
Reaching the employees for their work place	1.3	:	:	:	:	:	:	-	:	4.3
Regularity of work	12.8	23.5	5.9	16.7	20.0	:	16.7	-	21.1	0.0
Transporting finished goods to market	5.1	11.8	:	5.6	6.7	:	5.6	-	10.6	4.3

(-) No Data Available

(-)

(:) No Observations in the Sample

(:)

2009

/

:1-2

2009

Table 2-1: Percentage Distribution of Owners/ Managers of the Industrial Enterprises According to their Opinions of Main Indicators During December 2009 Compared to November 2009 in the Palestinian Territory

Problem	Total	Not Exist	Much Worse	Somewhat Worse	/ About the Same/ Unchanged	Somewhat Better	Much Better
Enterprise performance in general	100	:	2.9	26.5	41.8	25.0	3.8
Production situation	100	1.3	3.0	29.2	36.5	26.3	3.7
Employees productivity	100	1.0	2.5	25.7	45.2	23.2	2.4
Obtaining needed raw materials and inputs	100	0.5	0.8	8.8	80.2	8.4	1.3
Reaching the employees for their work place	100	0.4	0.2	1.1	94.0	2.9	1.4
Regularity of work	100	:	0.4	10.6	79.8	7.5	1.7
Transporting finished goods to market	100	1.6	1.5	13.4	71.3	11.1	1.1
Financial situations	100	0.2	2.3	21.7	54.3	19.5	2.0
Banks credits & facilities	100	32.0	0.4	2.6	62.3	2.6	0.1
Level of employment	100	0.2	1.6	10.3	76.0	11.0	0.9
Value of sales	100	0.4	3.9	32.6	32.6	27.5	3.0

(:) No Observations in the Sample

(:)

2009

Table 2-2: Percentage Distribution of Owners/ Managers of the Industrial Enterprises According to their Opinions of Main Indicators During December 2009 Compared to November 2009 in West Bank

Problem	Total	Not Exist	Much Worse	Somewhat Worse	/ About the Same/ Unchanged	Somewhat Better	Much Better
Enterprise performance in general	100	:	3.0	27.6	40.1	25.6	3.7
Production situation	100	:	3.1	30.4	35.9	27.0	3.6
Employees productivity	100	0.1	2.6	27.0	43.7	24.1	2.5
Obtaining needed raw materials and inputs	100	:	0.8	8.3	81.2	8.3	1.4
Reaching the employees for their work place	100	0.2	0.2	1.1	94.1	3.0	1.4
Regularity of work	100	:	0.4	10.7	80.0	7.2	1.7
Transporting finished goods to market	100	0.1	1.6	14.2	71.5	11.5	1.1
Financial situations	100	:	2.5	22.9	52.7	19.8	2.1
Banks credits & facilities	100	30.2	0.4	2.7	63.9	2.7	0.1
Level of employment	100	0.2	1.6	10.4	75.7	11.1	1.0
Value of sales	100	0.2	4.0	33.8	31.3	27.9	2.8

(:) No Observations in the Sample

(:)

2009

Table 2-3: Percentage Distribution of Owners/ Managers of the Industrial Enterprises According to their Opinions of Main Indicators During December 2009 Compared to November 2009 in Gaza Strip

Problem	Total	Not Exist	Much Worse	Somewhat Worse	/ About the Same/ Unchanged	Somewhat Better	Much Better
Enterprise performance in general	100	:	2.6	9.0	67.9	15.4	5.1
Production situation	100	21.8	1.3	9.0	47.4	15.4	5.1
Employees productivity	100	15.4	:	3.8	70.5	9.0	1.3
Obtaining needed raw materials and inputs	100	7.7	:	17.9	64.1	10.3	:
Reaching the employees for their work place	100	3.8	:	:	94.9	1.3	:
Regularity of work	100		:	9.0	78.2	11.5	1.3
Transporting finished goods to market	100	25.6	:	1.3	68.0	5.1	:
Financial situations	100	2.6	:	3.8	78.2	15.4	:
Banks credits & facilities	100	60.3	:	:	39.7	:	:
Level of employment	100	1.3	1.3	7.7	80.7	9.0	:
Value of sales	100	3.8	2.6	14.1	51.3	21.8	6.4

(:) No Observations in the Sample

(:)

Table 3: Percentage of Industrial Enterprises Witnessed an Improved Situation During the Reference Month (December 2009) Compared to that before the Reference Month for the Main Indicators by Region

Indicator	Gaza Strip	West Bank	Palestinian Territory	
Employees productivity	10.3	26.6	25.6	
Financial situations	15.4	21.9	21.5	
Banks credits & facilities	:	2.8	2.7	
Level of employment	9.0	12.1	11.9	
Value of sales	28.2	30.7	30.5	

(:) No Observations in the Sample

(:)

/

:4

2009

Table 4: Percentage Distribution of Owners/Managers of the Active Industrial Enterprises According to the Reasons for Sales Level Stability or Decline by Region During December 2009

Reason	Gaza Strip	West Bank	Palestinian Territory	
Decrease in demand	38.5	22.7	23.1	
Difficulties in exporting finished goods	:	1.7	1.7	
Decline in the consumer purchasing power	30.8	33.0	32.9	
Product Marketing Obstacles	:	1.3	1.3	()
Competence product	:	6.9	6.7	
Seasonally related	:	11.8	11.5	
Military check points/ israeli actions/ closures	30.7	3.2	4.0	/ /
Other	:	19.4	18.8	
Total	100	100	100	

(:) No Observations in the Sample

(:)

2009

:5

Table 5: Percentage Distribution of the Active Industrial Enterprises According to the Employment Mobility During December 2009 by Region

Employment Mobility	Gaza Strip	West Bank	Palestinian Territory	
Hiring employees	6.4	9.3	9.1	
Firing employees	5.1	10.3	10.0	
No change	88.5	80.4	80.9	
Total	100	100	100	

2009

/

:6

Table 6: Percentage Distribution of the Existing of Competition Against the Main Product According to the Owners\ Managers of the Active Industrial Enterprises During December 2009 by Region

Competence existence	Gaza Strip	West Bank	Palestinian Territory	
There is competition	75.6	94.0	92.9	
There is no competition	24.4	6.0	7.1	
Total	100	100	100	

2009

/

:7

Table 7: Percentage Distribution of the Type of Competition According to the Owners\ Managers of the Active Industrial Enterprises During December 2009 by Region

Type of competence	Gaza Strip	West Bank	Palestinian Territory	
Local	74.6	52.9	53.9	
Foreign	23.7	14.7	15.1	
Both	1.7	32.4	31.0	
Total	100	100	100	

Table 8: Expectations of Owners/ Managers of the Active Industrial Enterprises for the Month that Follows the Reference Month Compared to the Reference Month (December, 2009) for the Main Indicators by Region

Indicator	Reference Month									
	2009									
	كانون أول Dec.	تشرين ثاني Nov.	تشرين أول Oct.	أيلول Sep.	أب Aug.	تموز Jul.	حزيران Jun.	أيار May	نيسان Apr.	آذار Mar.
Percentage of who are expecting better Enterprise situation										
Palestinian Territory	41.3	29.9	37.8	53.2	28.1	32.3	37.9	-	38.7	38.7
West Bank	42.4	29.9	39.5	55.7	28.5	33.6	38.8	44.1	39.4	38.8
Gaza Strip	23.1	29.4	5.9	11.1	20.0	5.9	22.2	-	26.3	39.1
Percentage of who are expecting higher employment level										
Palestinian Territory	13.9	8.2	8.6	20.4	11.3	11.9	11.3	-	13.3	12.8
West Bank	13.6	7.4	8.8	20.7	10.5	12.5	11.0	17.5	12.8	12.1
Gaza Strip	17.9	23.5	5.9	16.7	26.7	:	16.7	-	21.1	21.7
Percentage of who are expecting higher sales volume										
Palestinian Territory	40.2	29.0	38.2	50.7	27.8	32.9	38.2	-	37.5	36.9
West Bank	41.4	29.3	40.0	53.4	28.2	34.2	39.4	42.7	38.5	36.4
Gaza Strip	21.8	23.5	5.9	5.6	20.0	5.9	16.7	-	21.1	43.4

(-) No Data Available

(:) No Observations in the Sample

(-)

(:) تعني لا يوجد مشاهدات بالعينة

Table 9: Expectations of Owners/ Managers of the Active Industrial Enterprises for the Six Months that Follow the Reference Month Compared to the Reference Month (December, 2009) for the Main Indicators by Region

Indicator	Reference Month									
	2009									
	كانون أول Dec.	تشرين ثاني Nov.	تشرين أول Oct.	أيلول Sep.	أب Aug.	تموز Jul.	حزيران Jun.	أيار May	نيسان Apr.	آذار Mar.
Percentage of who are expecting better Enterprise situation										
Palestinian Territory	58.3	51.0	45.8	56.2	48.7	44.4	51.1	-	53.2	39.1
West Bank	59.7	50.9	47.3	57.8	49.1	45.5	51.1	49.0	53.8	60.2
Gaza Strip	37.2	53.0	17.6	27.8	40.0	5.9	50.0	-	42.1	39.1
Percentage of who are expecting higher employment level										
Palestinian Territory	26.7	15.7	11.4	26.6	19.3	21.5	24.8	-	26.9	26.1
West Bank	26.7	15.0	11.4	26.6	18.7	22.6	24.6	24.5	27.0	28.8
Gaza Strip	26.9	29.4	11.8	27.8	33.3	-	27.8	-	26.3	21.7
Percentage of who are expecting higher sales volume										
Palestinian Territory	58.2	52.3	45.5	55.3	48.5	44.8	51.7	-	54.1	43.5
West Bank	59.2	52.2	46.8	56.5	48.6	46.8	51.4	48.4	54.8	58.8
Gaza Strip	42.3	52.9	23.5	33.3	46.7	5.9	55.6	-	42.1	43.4

(-) No Data Available

(:) No Observations in the Sample

(-)

(:) تعني لا يوجد مشاهدات بالعينة

Table 10: Expectations of Owners/ Managers of the Active Industrial Enterprises about Better Expectations for their Enterprises for the Month that Follows the Reference Month (December, 2009) Compared to the Reference Month by Region

Indicator	Gaza Strip	West Bank	Palestinian Territory	
Enterprise performance in general	26.9	41.7	40.8	
Employees productivity	5.1	36.1	34.3	
Obtaining needed raw materials and inputs	24.4	11.4	12.1	
Reaching the employees for their work place	1.3	4.6	4.5	
Regularity of work	19.2	14.8	15.1	
Transporting finished goods to market	2.6	17.1	16.3	
Financial situations	19.2	30.0	29.3	
Banks credits & facilities	5.1	3.2	3.3	

Table 11: Expectations of Owners/ Managers of the Active Industrial Enterprises about Better Expectations for their Enterprises for the Six Months that Follow the Reference Month (December, 2009) Compared to the Reference Month for the Main Indicators by Region

Indicator	Gaza Strip	West Bank	Palestinian Territory	
Enterprise performance in general	47.5	58.6	57.9	
Employees productivity	6.4	51.8	49.1	
Obtaining needed raw materials and inputs	35.9	17.6	18.7	
Reaching the employees for their work place	1.3	6.0	5.8	
Regularity of work	28.2	24.0	24.2	
Transporting finished goods to market	3.8	26.9	25.6	
Financial situations	30.8	45.0	44.2	
Banks credits & facilities	9.0	5.1	5.4	

(2009)

/

:1-12

Table 12-1: Percentage Distribution of Owners/ Managers of the Active Industrial Enterprises According to Their Opinions of Main Indicators for the Month that Follows the Reference Month (December, 2009) Compared to the Reference Month in the Palestinian Territory

Indicator	Total	Not Exist	Much Worse	Somewhat Worse	/ About the Same/ Unchanged	Somewhat Better	Much Better	
Enterprise performance in general	100	:	0.6	13.3	45.3	38.8	2.0	
Production situation	100	0.9	0.7	13.3	43.8	39.4	1.9	
Volume of sales	100	0.5	0.7	14.0	44.6	38.7	1.5	
Employees productivity	100	0.4	0.5	10.6	54.2	33.2	1.1	
Obtaining needed raw materials and inputs	100	0.2	0.2	3.9	83.6	11.6	0.5	
Reaching the employees for their work place	100	0.2	0.1	1.2	94.0	3.8	0.7	
Regularity of work	100		0.8	4.6	79.5	14.6	0.5	
Level of employment	100	0.2	0.7	4.3	80.9	13.2	0.7	
Transporting finished goods to market	100	1.4	1.1	4.9	76.3	15.7	0.6	
Financial situations	100	0.2	0.8	9.7	60.0	28.2	1.1	
Banks credits & facilities	100	31.9	0.2	0.8	63.8	3.1	0.2	

(2009)

/

:2-12

Table 12-2: Percentage Distribution of Owners/ Managers of the Active Industrial Enterprises According to Their Opinions of Main Indicators for the Month that Follows the Reference Month (December, 2009) Compared to the Reference Month in the West Bank

Indicator	Total	Not Exist	Much Worse	Somewhat Worse	/ About the Same/ Unchanged	Somewhat Better	Much Better	
Enterprise performance in general	100	:	0.6	13.5	44.2	39.6	2.1	
Production situation	100	:	0.6	13.5	43.5	40.5	1.9	
Volume of sales	100	:	0.6	14.3	43.7	39.9	1.5	
Employees productivity	100	0.1	0.5	10.9	52.4	35.0	1.1	
Obtaining needed raw materials and inputs	100	:	0.1	3.8	84.7	10.9	0.5	
Reaching the employees for their work place	100	0.2	0.1	1.0	94.1	3.9	0.7	
Regularity of work	100	:	0.6	4.5	80.1	14.3	0.5	
Level of employment	100	0.2	0.5	4.3	81.4	12.9	0.7	
Transporting finished goods to market	100	:	1.0	5.1	76.8	16.5	0.6	
Financial situations	100	0.1	0.9	9.8	59.2	28.8	1.2	
Banks credits & facilities	100	30.7	0.2	0.8	65.1	3.0	0.2	

(:) No Observations in the Sample

(:)

Table 12-3: Percentage Distribution of Owners/ Managers of the Active Industrial Enterprises According to Their Opinions of Main Indicators for the Month that Follows the Reference Month (December, 2009) Compared to the Reference Month in Gaza Strip

Indicator	Total	Not Exist	Much Worse	Somewhat Worse	/ About the Same/ Unchanged	Somewhat Better	Much Better	
Enterprise performance in general	100	:	1.3	10.3	61.5	25.6	1.3	
Production situation	100	15.4	1.3	10.3	49.9	21.8	1.3	
Volume of sales	100	9.0	1.3	9.0	58.9	20.5	1.3	
Employees productivity	100	5.1	1.3	5.1	83.4	3.8	1.3	
Obtaining needed raw materials and inputs	100	3.8	1.3	6.4	64.1	23.1	1.3	
Reaching the employees for their work place	100	:	:	3.8	94.9	1.3	:	
Regularity of work	100	:	3.8	6.4	70.6	19.2	:	
Level of employment	100	:	3.8	5.1	73.2	17.9	:	
Transporting finished goods to market	100	24.4	1.3	1.3	70.4	2.6	:	
Financial situations	100	1.3	:	7.7	71.8	19.2	:	
Banks credits & facilities	100	51.3	:	:	43.6	5.1	:	

(:) No Observations in the Sample

(:)

(2009)

/

:1-13

Table 13-1: Percentage Distribution of Owners/ Managers of the Active Industrial Enterprises According to Their Opinions of Main Indicators During the Next Six Months Compared to Reference Month (December, 2009) in the Palestinian Territory

Indicator	Total	Not Exist	Much Worse	Somewhat Worse	/ About the Same/ Unchanged	Somewhat Better	Much Better	
Enterprise performance in general	100	:	1.3	13.9	26.9	53.6	4.3	
Production situation	100	0.9	1.4	13.8	25.6	54.0	4.3	
Volume of sales	100	0.5	1.5	14.7	25.1	53.9	4.3	
Employees productivity	100	0.4	1.3	11.2	38.0	46.0	3.1	
Obtaining needed raw materials and inputs	100	0.2	0.5	3.4	77.2	16.4	2.3	
Reaching the employees for their work place	100	0.2	0.3	1.1	92.6	3.9	1.9	
Regularity of work	100	:	1.2	4.6	70.0	22.5	1.7	
Level of employment	100	0.2	1.1	4.5	67.5	24.8	1.9	
Transporting finished goods to market	100	1.4	1.5	4.4	67.1	23.6	2.0	
Financial situations	100	0.2	1.7	9.2	44.7	41.1	3.1	
Banks credits & facilities	100	31.8	0.1	0.5	62.2	4.9	0.5	

(:) No Observations in the Sample

(:)

Table 13-2: Percentage Distribution of Owners/ Managers of the Active Industrial Enterprises According to Their Opinions of Main Indicators During the Next Six Months Compared to Reference Month (December, 2009) in the West Bank

Indicator	Total	Not Exist	Much Worse	Somewhat Worse	/ About the Same/ Unchanged	Somewhat Better	Much Better	
Enterprise performance in general	100	:	1.2	14.2	26.0	54.1	4.5	
Production situation	100	:	1.3	14.2	24.8	55.2	4.5	
Volume of sales	100	:	1.4	15.2	24.2	54.7	4.5	
Employees productivity	100	0.1	1.2	11.6	35.3	48.6	3.2	
Obtaining needed raw materials and inputs	100	:	0.5	3.1	78.8	15.3	2.3	
Reaching the employees for their work place	100	0.2	0.3	1.1	92.4	4.0	2.0	
Regularity of work	100		1.1	4.5	70.4	22.2	1.8	
Level of employment	100	0.2	1.0	4.4	67.7	24.7	2.0	
Transporting finished goods to market	100	:	1.5	4.6	67.0	24.8	2.1	
Financial situations	100	0.1	1.7	9.4	43.8	41.7	3.3	
Banks credits & facilities	100	30.6	0.1	0.5	63.7	4.6	0.5	

(:) No Observations in the Sample

(:)

Table 13-3: Percentage Distribution of Owners/ Managers of the Active Industrial Enterprises According to Their Opinions of Main Indicators During the Next Six Months Compared to Reference Month (December, 2009) in Gaza Strip

Indicator	Total	Not Exist	Much Worse	Somewhat Worse	/ About the Same/ Unchanged	Somewhat Better	Much Better	
Enterprise performance in general	100	:	2.6	9.0	40.9	46.2	1.3	
Production situation	100	15.4	3.8	7.7	35.9	35.9	1.3	
Volume of sales	100	9.0	2.6	7.7	38.4	41.0	1.3	
Employees productivity	100	5.1	2.6	5.1	80.8	5.1	1.3	
Obtaining needed raw materials and inputs	100	3.8	1.3	7.7	51.3	34.6	1.3	
Reaching the employees for their work place	100	:	:	1.3	97.4	1.3	:	
Regularity of work	100	:	2.6	6.4	62.8	28.2	:	
Level of employment	100	:	2.6	5.1	65.4	26.9	:	
Transporting finished goods to market	100	24.4	1.3	1.3	69.2	3.8	:	
Financial situations	100	1.3	1.3	6.4	60.2	30.8	:	
Banks credits & facilities	100	51.3	:	:	39.7	9.0	:	

(:) No Observations in the Sample

(:) تعني لا يوجد مشاهدات بالعينة

Table 14: Percentage Distribution of Owners/Managers of the Industrial Enterprises Opinion About the Factors Affecting Production Cost During the Fourth Quarter 2009 by Region

Factors		Opinion						
		No effect	Relatively weak effect	Weak effect	Relatively large effect	Large effect		
Foreign competition	Palestinian Territory	35.4	8.5	12.8	20.2	23.1		
	West bank	33.4	8.9	13.4	20.3	24.1		
	Gaza strip	67.9	2.6	3.8	19.2	6.4		
Informal Sector	Palestinian Territory	34.0	8.4	24.4	19.3	14.0		
	West bank	30.9	8.8	25.9	19.9	14.5		
	Gaza strip	83.3	1.3	:	10.3	5.1		
Local Competition	Palestinian Territory	12.4	4.2	16.0	32.0	35.4		
	West bank	10.9	4.2	15.7	32.4	36.9		
	Gaza strip	35.9	5.1	20.5	25.6	12.8		
Transport cost	Palestinian Territory	11.8	7.0	20.3	35.9	24.9		
	West bank	9.7	7.3	21.1	36.7	25.2		
	Gaza strip	46.2	2.6	7.7	24.4	19.2		
Political situation	Palestinian Territory	7.0	3.2	17.0	35.9	36.9		
	West bank	6.5	3.4	17.6	37.1	35.4		
	Gaza strip	15.4	:	6.4	16.7	61.5		
Costs of raw materials and inputs	Palestinian Territory	6.0	2.6	11.2	30.8	49.5		
	West bank	5.2	2.7	11.7	31.5	48.9		
	Gaza strip	17.9	:	2.6	20.5	59.0		

(:) No Observations in the Sample

(:) تعني لا يوجد مشاهدات بالعينة

2009

/

:15

Table 15: Percentage Distribution of the Frequency of Loans Requested From the Banks According to the Owners/Managers of the Industrial Enterprises Opinion During the Fourth Quarter 2009 by Region

Frequency	Gaza Strip	West Bank	Palestinian Territory	
No loan request	100.0	93.2	93.6	
Once	:	5.8	5.5	
2-5	:	1.0	0.9	5-2
Total	100	100	100	

(:) No Observations in the Sample

(:)

Table 16: Percentage Distribution of Owners/ Managers of the Industrial Enterprises According to Their Views About the Export Obstacles During the Fourth Quarter 2009 by Region

Problems	Region	Not applicable	I don't know	Large difficulty	Medium difficulty	Small difficulty	No difficulty		
Commitment to international market requirements	Palestinian Territory	-	-	-	-	-	-		
	West bank	2.1	0.2	1.6	3.0	12.3	80.8		
	Gaza strip	-	-	-	-	-	-		
Commitment to export market packaging requirements	Palestinian Territory	-	-	-	-	-	-		
	West bank	1.9	0.4	0.5	2.3	8.8	86.1		
	Gaza strip	-	-	-	-	-	-		
Price competition in the export market	Palestinian Territory	-	-	-	-	-	-		
	West bank	1.6	0.2	4.9	14.1	24.6	54.6		
	Gaza strip	-	-	-	-	-	-		
Compliance to quantity demanded and delivery time	Palestinian Territory	-	-	-	-	-	-		
	West bank	0.7	0.2	1.2	5.3	13.4	79.2		
	Gaza strip	-	-	-	-	-	-		
Export financing	Palestinian Territory	-	-	-	-	-	-		
	West bank	2.5	0.4	1.4	4.4	14.1	77.2		
	Gaza strip	-	-	-	-	-	-		
Marketing ability	Palestinian Territory	-	-	-	-	-	-		
	West bank	5.1	0.2	2.2	4.6	23.3	64.6		
	Gaza strip	-	-	-	-	-	-		
Regular achievement of raw materials	Palestinian Territory	-	-	-	-	-	-		
	West bank	7.2		3.0	5.3	23.7	60.8		
	Gaza strip	-	-	-	-	-	-		

(-) No Data Available

(-)

Table 16 (Cont): Percentage Distribution of Owners/ Managers of the Industrial Enterprises According to Their Views About the Export Obstacles During the Fourth Quarter 2009 by Region

Problems	Region	Not applicable	I don't know	Large difficulty	Medium difficulty	Small difficulty	No difficulty		
Regular achievement of export	Palestinian Territory	-	-	-	-	-	-		
	West bank	3.2	0.2	3.5	7.2	39.4	46.5		
	Gaza strip	-	-	-	-	-	-		
Regular achievement of employee	Palestinian Territory	-	-	-	-	-	-		
	West bank	6.4		0.7	0.9	4.2	87.8		
	Gaza strip	-	-	-	-	-	-		
Palestinian export regulation and license	Palestinian Territory	-	-	-	-	-	-		
	West bank	0.9	0.4	2.2	4.9	15.5	76.1		
	Gaza strip	-	-	-	-	-	-		
Information access to the foreign market	Palestinian Territory	-	-	-	-	-	-		
	West bank	3.4	0.9	4.0	5.3	28.6	57.8		
	Gaza strip	-	-	-	-	-	-		
Traveling problems imposed on entering foreign markets	Palestinian Territory	-	-	-	-	-	-		
	West bank	1.6	0.5	9.6	7.2	31.8	49.3		
	Gaza strip	-	-	-	-	-	-		
Import regulation in the foreign market	Palestinian Territory	-	-	-	-	-	-		
	West bank	2.3	0.9	5.3	8.0	34.6	48.9		
	Gaza strip	-	-	-	-	-	-		
Customer payment guarantee	Palestinian Territory	-	-	-	-	-	-		
	West bank	0.5	0.9	15.2	13.6	25.9	43.9		
	Gaza strip	-	-	-	-	-	-		

(-) No Data Available

(-)

2009

:17

Table 17: Percentage of Mechanism of Finding Customers in the Export Market During the Fourth Quarter 2009 by Region

Approaching Customers	Gaza Strip	West Bank	Palestinian Territory	
Market researches	-	21.6	-	
Information gathered from commerce chamber industrial union etc...	-	11.3	-	
Participate in international exhibitions and organized business missions	-	25.3	-	
Self-organized visits to the export market	-	41.4	-	
Personal relationships and contacts	-	93.5	-	
Through internet	-	18.6	-	
Customer self initiative	-	69.7	-	

(-) No Data Available

(-)