



**Palestinian National Authority
Palestinian Central Bureau of Statistics**

**Survey of the Perceptions of the Owners / Managers of
Industrial Enterprises Regarding the Economic Situation,
September 2009**

Press Release on the Survey Results

October, 2009

:1-1

2009

Table 1-1: Percentage of the Industrial Enterprises Witnessed an Improved Situation During the Reference Month Compared to that before the Reference Month for the Main Indicators in the Palestinian Territory 2009

Indicator	Reference Month									
	2009									2008
	أيلول Sep.	أب Aug.	تموز Jul.	حزيران Jun.	أيار May	نيسان Apr.	آذار Mar.	شباط Feb.	كانون ثاني Jan.	كانون أول Dec.
Enterprise performance in general	19.2	29.9	31.7	33.2	-	28.7	34.7	26.4	-	-
Obtaining needed raw materials and inputs	7.7	8.0	5.6	9.6	-	6.9	13.1	8.5	-	-
Reaching the employees for their work place	3.4	1.2	3.5	3.0	-	2.1	6.9	9.1	-	-
Regularity of work	7.4	7.1	8.2	9.9	-	6.0	10.7	10.0	-	-
Transporting finished goods to market	8.3	11.8	15.7	17.0	-	11.2	11.6	11.8	-	-

(-) No Data Available

(-)

:2-1

2009

Table 1-2: Percentage of Industrial Enterprises Witnessed an Improved Situation During the Reference Month Compared to that before the Reference Month for the Main Indicators in the West Bank 2009

Indicator	Reference Month									
	2009									2008
	أيلول Sep.	أب Aug.	تموز Jul.	حزيران Jun.	أيار May	نيسان Apr.	آذار Mar.	شباط Feb.	كانون ثاني Jan.	كانون أول Dec.
Enterprise performance in general	19.1	29.7	32.7	33.9	35.1	28.9	36.7	21.6	17.4	16.7
Obtaining needed raw materials and inputs	7.8	8.1	5.8	9.8	8.9	6.7	13.5	7.0	10.7	7.0
Reaching the employees for their work place	3.6	1.2	3.7	3.1	2.9	2.2	7.1	3.8	4.3	3.1
Regularity of work	6.9	6.5	8.6	9.4	9.9	5.1	11.5	5.1	6.1	3.5
Transporting finished goods to market	8.5	12.1	16.5	17.7	15.5	11.3	12.1	7.6	7.7	5.4

2009

Table 1-3: Percentage of Industrial Enterprises Witnessed an Improved Situation During the Reference Month Compared to that before the Reference Month for the Main Indicators in Gaza Strip 2009

Indicator	Reference Month									
	2009									2008
	أيلول Sep.	أب Aug.	تموز Jul.	حزيران Jun.	أيار May	نيسان Apr.	آذار Mar.	شباط Feb.	كانون ثاني Jan.	كانون أول Dec.
Enterprise performance in general	22.3	33.4	11.8	22.2	-	26.3	8.7	84.6	-	-
Obtaining needed raw materials and inputs	5.6	6.7	:	5.6	-	10.6	8.7	26.9	-	-
Reaching the employees for their work place	:	:	:	:	-	:	4.3	73.1	-	-
Regularity of work	16.7	20.0	:	16.7	-	21.1	0.0	69.2	-	-
Transporting finished goods to market	5.6	6.7	:	5.6	-	10.6	4.3	61.6	-	-

(-) No Data Available

(-)

(:) No Observations in the Sample

(:)

2009

2009

/

:1-2

Table 2-1: Percentage Distribution of Owners/ Managers of the Industrial Enterprises According to Their Opinions of Main Indicators During September 2009 Compared to August 2009 in the Palestinian Territory

Problem	Total	Not Exist	Much Worse	Somewhat Worse	/ About the Same/ Unchanged	Somewhat Better	Much Better
Enterprise performance in general	100	:	4.3	38.8	37.7	16.8	2.4
Production situation	100	1.2	4.6	41.9	31.2	19.0	2.1
Employees productivity	100	0.9	4.9	40.0	35.8	16.6	1.8
Obtaining needed raw materials and inputs	100	0.6	0.9	8.9	81.9	6.5	1.2
Reaching the employees for their work place	100	0.3	:	0.6	95.7	1.2	2.2
Regularity of work	100	:	0.6	20.6	71.4	5.2	2.2
Transporting finished goods to market	100	1.8	0.9	16.6	72.4	7.4	0.9
Financial situations	100	:	3.7	27.1	56.0	12.6	0.6
Banks credits & facilities	100	28.9	0.3	3.4	64.9	2.2	0.3
Level of employment	100	:	1.8	13.5	74.0	9.8	0.9
Value of sales	100	0.6	5.8	43.1	29.1	20.5	0.9

(:) No Observations in the Sample

(:)

Table 2-2: Percentage Distribution of Owners/ Managers of the Industrial Enterprises According to Their Opinions of Main Indicators During September 2009 Compared to August 2009 in the West Bank

Problem	Total	Not Exist	Much Worse	Somewhat Worse	/ About the Same/ Unchanged	Somewhat Better	Much Better
Enterprise performance in general	100	:	4.5	40.8	35.6	16.8	2.3
Production situation	100	:	4.9	44.0	30.1	19.1	1.9
Employees productivity	100	:	5.2	42.3	33.2	17.3	2.0
Obtaining needed raw materials and inputs	100	:	1.0	8.8	82.4	6.5	1.3
Reaching the employees for their work place	100	:	:	0.7	95.7	1.3	2.3
Regularity of work	100	:	0.7	21.5	70.9	4.6	2.3
Transporting finished goods to market	100	0.3	1.0	17.6	72.6	7.5	1.0
Financial situations	100	:	3.9	28.7	54.6	12.1	0.7
Banks credits & facilities	100	26.7	0.3	3.6	66.8	2.3	0.3
Level of employment	100	:	2.0	13.7	73.5	9.8	1.0
Value of sales	100	0.3	6.1	45.3	27.3	20.4	0.6

(:) No Observations in the Sample

(:)

Table 2-3: Percentage Distribution of Owners/ Managers of the Industrial Enterprises According to Their Opinions of Main Indicators During September 2009 Compared to August 2009 in Gaza Strip

Problem	Total	Not Exist	Much Worse	Somewhat Worse	/ About the Same/ Unchanged	Somewhat Better	Much Better
Enterprise performance in general	100	:	:	5.6	72.1	16.7	5.6
Production situation	100	22.2	:	5.6	49.9	16.7	5.6
Employees productivity	100	16.7	:	:	77.7	5.6	:
Obtaining needed raw materials and inputs	100	11.1	:	11.1	72.2	5.6	:
Reaching the employees for their work place	100	5.6	:	:	94.4	:	:
Regularity of work	100	:	:	5.6	77.7	16.7	:
Transporting finished goods to market	100	27.8	:	:	66.6	5.6	:
Financial situations	100	:	:	:	77.8	22.2	:
Banks credits & facilities	100	66.7	:	:	33.3	:	:
Level of employment	100	:	:	11.1	77.8	11.1	:
Value of sales	100	5.6	:	5.6	61.0	22.2	5.6

(:) No Observations in the Sample

(:)

Table 3: Percentage of Industrial Enterprises Witnessed an Improved Situation During the Reference Month (September 2009) Compared to that before the Reference Month for the Main Indicators by Region

Indicator	Gaza Strip	West Bank	Palestinian Territory	
Employees productivity	5.6	19.3	18.4	
Financial situations	22.2	12.8	13.2	
Banks credits & facilities	:	2.6	2.5	
Level of employment	11.1	10.8	10.7	
Value of sales	27.8	21.0	21.4	

(:) No Observations in the Sample

(:)

/

:4

2009

Table 4: Percentage Distribution of Owners/Managers of the Active Industrial Enterprises According to the Reasons for Sales Level Stability or Decline by Region During September 2009

Reason	Gaza Strip	West Bank	Palestinian Territory	
Decrease in demand	100.0	24.1	24.5	
Difficulties in exporting finished goods	:	1.9	1.9	
Decline in the consumer purchasing power	:	27.2	27.1	
Product Marketing Obstacles	:	0.6	0.6	()
Competence product	:	2.5	2.5	
Seasonally related	:	7.0	6.9	
Military check points/ israeli actions/ closures	:	1.3	1.3	/ /
Other	:	35.4	35.2	
Total	100	100	100	

(:) No Observations in the Sample

(:)

(-) No Data Available

(-)

2009

:5

Table 5: Percentage Distribution of the Active Industrial Enterprises According to the Employment Mobility During September 2009 by Region

Employment Mobility	Gaza Strip	West Bank	Palestinian Territory	
Hiring employees	5.6	12.0	11.7	
Firing employees	5.6	9.7	9.5	
No change	88.8	78.3	78.8	
Total	100	100	100	

2009

/

:6

Table 6: Percentage Distribution of the Existing of Competition Against the Main Product According to the Owners\ Managers of the Active Industrial Enterprises During September 2009 by Region

Competence existence	Gaza Strip	West Bank	Palestinian Territory	
There is competition	72.2	93.2	92.0	
There is no competition	27.8	6.8	8.0	
Total	100	100	100	

2009

/

:7

Table 7: Percentage Distribution of the Type of Competition According to the Owners\ Managers of the Active Industrial Enterprises During September 2009 by Region

Type of competence	Gaza Strip	West Bank	Palestinian Territory	
Local	92.3	47.3	49.2	
Foreign	7.7	13.5	13.3	
Both	:	39.2	37.5	
Total	100	100	100	

(:) No Observations in the Sample

(:)

Table 8: Expectations of Owners/ Managers of the Active Industrial Enterprises for the Month that Follows the Reference Month Compared to the Reference Month (September, 2009) for the Main Indicators by Region

Indicator	Reference Month									
	2009									2008
	أيلول Sep.	آب Aug.	تموز Jul.	حزيران Jun.	أيار May	نيسان Apr.	آذار Mar.	شباط Feb.	كانون ثاني Jan.	كانون أول Dec.
Percentage of who are expecting better Enterprise situation										
Palestinian Territory	53.2	28.1	32.3	37.9	-	38.7	38.7	33.9	33.4	-
West Bank	55.7	28.5	33.6	38.8	44.1	39.4	38.8	37.1	29.1	26.5
Gaza Strip	11.1	20.0	5.9	22.2	-	26.3	39.1	65.3	85.1	-
Percentage of who are expecting higher employment level										
Palestinian Territory	20.4	11.3	11.9	11.3	-	13.3	12.8	18.1	17.0	-
West Bank	20.7	10.5	12.5	11.0	17.5	12.8	12.1	14.4	11.0	11.2
Gaza Strip	16.7	26.7	:	16.7	-	21.1	21.7	61.5	88.8	-
Percentage of who are expecting higher sales volume										
Palestinian Territory	50.7	27.8	32.9	38.2	-	37.5	36.9	39.3	34.8	-
West Bank	53.4	28.2	34.2	39.4	42.7	38.5	36.4	37.1	29.7	28.1
Gaza Strip	5.6	20.0	5.9	16.7	-	21.1	43.4	65.3	96.3	-

(-) No Data Available

(:) No Observations in the Sample

(-)

(:) تعني لا يوجد مشاهدات بالعينة

Table 9: Expectations of Owners/ Managers of the Active Industrial Enterprises for the Six Months that Follow the Reference Month Compared to the Reference Month (September, 2009) for the Main Indicators by Region

Indicator	Reference Month									
	2009									2008
	أيلول Sep.	أب Aug.	تموز Jul.	حزيران Jun.	أيار May	نيسان Apr.	آذار Mar.	شباط Feb.	كانون ثاني Jan.	كانون أول Dec.
Percentage of who are expecting better Enterprise situation										
Palestinian Territory	56.2	48.7	44.4	51.1	-	53.2	39.1	56.8	62.3	-
West Bank	57.8	49.1	45.5	51.1	49.0	53.8	60.2	55.7	60.5	50.2
Gaza Strip	27.8	40.0	5.9	50.0	-	42.1	39.1	69.1	85.2	-
Percentage of who are expecting higher employment level										
Palestinian Territory	26.6	19.3	21.5	24.8	-	26.9	21.7	28.5	36.0	-
West Bank	26.6	18.7	22.6	24.6	24.5	27.0	28.8	25.5	31.6	18.9
Gaza Strip	27.8	33.3	:	27.8	-	26.3	26.1	65.4	88.9	-
Percentage of who are expecting higher sales volume										
Palestinian Territory	55.3	48.5	44.8	51.7	-	54.1	43.4	56.5	62.9	-
West Bank	56.5	48.6	46.8	51.4	48.4	54.8	58.8	55.8	60.2	52.7
Gaza Strip	33.3	46.7	5.9	55.6	-	42.1	43.4	65.4	96.3	-

(-) No Data Available

(:) No Observations in the Sample

(-)

(:) تعني لا يوجد مشاهدات بالعينة

(2009)

/ :10

Table 10: Expectations of Owners/ Managers of the Active Industrial Enterprises about Better Expectations for their Enterprises for the Month that Follows the Reference Month (September, 2009) Compared to the Reference Month by Region

Indicator	Gaza Strip	West Bank	Palestinian Territory	
Enterprise performance in general	11.1	54.7	52.3	
Employees productivity	:	50.5	47.7	
Obtaining needed raw materials and inputs	16.7	11.1	11.4	
Reaching the employees for their work place	:	7.5	7.1	
Regularity of work	16.7	24.8	24.4	
Transporting finished goods to market	:	24.5	23.1	
Financial situations	16.7	36.9	35.8	
Banks credits & facilities	5.6	3.9	4.0	

(:) No Observations in the Sample

(:)

Table 11: Expectations of Owners/ Managers of the Active Industrial Enterprises about Better Expectations for their Enterprises for the Six Months that Follow the Reference Month (September, 2009) Compared to the Reference Month for the Main Indicators by Region

Indicator	Gaza Strip	West Bank	Palestinian Territory	
Enterprise performance in general	38.9	56.5	55.6	
Employees productivity	:	53.6	50.6	
Obtaining needed raw materials and inputs	33.3	11.5	12.7	
Reaching the employees for their work place	:	6.9	6.5	
Regularity of work	27.8	27.4	27.4	
Transporting finished goods to market	:	28.8	27.2	
Financial situations	33.3	40.7	40.3	
Banks credits & facilities	11.1	5.0	5.3	

(:) No Observations in the Sample

(:)

(2009)

/

:1-12

Table 12-1: Percentage Distribution of Owners/ Managers of the Active Industrial Enterprises According to Their Opinions of Main Indicators for the Month that Follows the Reference Month (September, 2009) Compared to the Reference Month in the Palestinian Territory

Indicator	Total	Not Exist	Much Worse	Somewhat Worse	/ About the Same/ Unchanged	Somewhat Better	Much Better	
Enterprise performance in general	100	:	0.9	12.2	34.6	50.5	1.8	
Production situation	100	0.9	0.6	13.1	32.2	51.1	2.1	
Volume of sales	100	0.6	0.6	13.8	34.3	49.2	1.5	
Employees productivity	100	0.3	0.6	12.0	39.4	46.2	1.5	
Obtaining needed raw materials and inputs	100	0.3	:	2.5	85.8	10.8	0.6	
Reaching the employees for their work place	100	0.3	:	1.5	91.1	6.5	0.6	
Regularity of work	100	:	0.3	4.3	71.0	23.8	0.6	
Level of employment	100	:	0.3	4.0	75.3	19.5	0.9	
Transporting finished goods to market	100	1.5	:	4.6	70.8	22.5	0.6	
Financial situations	100	:	0.6	7.4	56.2	34.6	1.2	
Banks credits & facilities	100	28.3	:	0.3	67.4	3.7	0.3	

(:) No Observations in the Sample

(:)

(2009)

/

:2-12

Table 12-2: Percentage Distribution of Owners/ Managers of the Active Industrial Enterprises According to Their Opinions of Main Indicators for the Month that Follows the Reference Month (September, 2009) Compared to the Reference Month in the West Bank

Indicator	Total	Not Exist	Much Worse	Somewhat Worse	/ About the Same/ Unchanged	Somewhat Better	Much Better	
Enterprise performance in general	100	:	1.0	12.3	32.0	52.8	1.9	
Production situation	100	:	0.6	13.3	30.4	53.4	2.3	
Volume of sales	100	:	0.6	13.9	32.1	51.8	1.6	
Employees productivity	100	:	0.7	12.4	36.4	48.9	1.6	
Obtaining needed raw materials and inputs	100	:	:	2.6	86.3	10.4	0.7	
Reaching the employees for their work place	100	0.3	:	1.3	90.8	6.9	0.7	
Regularity of work	100	:	0.3	4.2	70.6	24.2	0.7	
Level of employment	100	:	0.3	3.9	75.1	19.7	1.0	
Transporting finished goods to market	100	:	:	4.9	70.5	23.9	0.7	
Financial situations	100	:	0.7	7.5	54.9	35.6	1.3	
Banks credits & facilities	100	26.7	:	0.3	69.1	3.6	0.3	

(:) No Observations in the Sample

(:)

Table 12-3: Percentage Distribution of Owners/ Managers of the Active Industrial Enterprises According to Their Opinions of Main Indicators for the Month that Follows the Reference Month (September, 2009) Compared to the Reference Month in Gaza Strip

Indicator	Total	Not Exist	Much Worse	Somewhat Worse	/ About the Same/ Unchanged	Somewhat Better	Much Better	
Enterprise performance in general	100	:	:	11.1	77.8	11.1	:	
Production situation	100	16.7	:	11.1	61.1	11.1	:	
Volume of sales	100	11.1	:	11.1	72.2	5.6	:	
Employees productivity	100	5.6	:	5.6	88.8	:	:	
Obtaining needed raw materials and inputs	100	5.6	:	:	77.7	16.7	:	
Reaching the employees for their work place	100	:	:	5.6	94.4	:	:	
Regularity of work	100	:	:	5.6	77.7	16.7	:	
Level of employment	100	:	:	5.6	77.7	16.7	:	
Transporting finished goods to market	100	27.8	:	:	72.2	:	:	
Financial situations	100	:	:	5.6	77.7	16.7	:	
Banks credits & facilities	100	55.6	:	:	38.8	5.6	:	

(:) No Observations in the Sample

(:)

(2009)

/

:1-13

Table 13-1: Percentage Distribution of Owners/ Managers of the Active Industrial Enterprises According to Their Opinions of Main Indicators During the Next Six Months Compared to Reference Month (September, 2009) in the Palestinian Territory

Indicator	Total	Not Exist	Much Worse	Somewhat Worse	/ About the Same/ Unchanged	Somewhat Better	Much Better	
Enterprise performance in general	100	:	2.2	16.0	26.2	52.2	3.4	
Production situation	100	0.9	1.9	16.4	24.6	52.5	3.7	
Volume of sales	100	0.6	1.9	17.9	24.3	51.9	3.4	
Employees productivity	100	0.3	1.6	16.1	31.4	47.2	3.4	
Obtaining needed raw materials and inputs	100	0.3	:	2.8	84.2	9.6	3.1	
Reaching the employees for their work place	100	0.3	:	0.9	92.3	4.0	2.5	
Regularity of work	100	:	0.6	5.0	67.0	24.9	2.5	
Level of employment	100	:	0.6	4.1	68.7	24.1	2.5	
Transporting finished goods to market	100	1.6	0.3	4.7	66.2	24.7	2.5	
Financial situations	100	:	1.9	7.2	50.6	37.8	2.5	
Banks credits & facilities	100	28.7	:	0.3	65.8	4.0	1.2	

(:) No Observations in the Sample

(:)

Table 13-2: Percentage Distribution of Owners/ Managers of the Active Industrial Enterprises According to Their Opinions of Main Indicators During the Next Six Months Compared to Reference Month (September, 2009) in the West Bank

Indicator	Total	Not Exist	Much Worse	Somewhat Worse	/ About the Same/ Unchanged	Somewhat Better	Much Better	
Enterprise performance in general	100	:	2.3	16.7	24.5	52.9	3.6	
Production situation	100	:	2.0	17.0	23.2	53.9	3.9	
Volume of sales	100	:	2.0	18.6	22.9	52.9	3.6	
Employees productivity	100	:	1.6	16.8	28.0	50.0	3.6	
Obtaining needed raw materials and inputs	100	:	:	3.0	85.5	8.2	3.3	
Reaching the employees for their work place	100	0.3	:	1.0	91.8	4.3	2.6	
Regularity of work	100	:	0.7	5.0	66.9	24.8	2.6	
Level of employment	100	:	0.7	4.0	68.7	23.9	2.7	
Transporting finished goods to market	100	:	0.3	5.0	65.9	26.2	2.6	
Financial situations	100	:	2.0	7.3	50.0	38.1	2.6	
Banks credits & facilities	100	27.1	:	0.3	67.7	3.6	1.3	

(:) No Observations in the Sample

(:)

Table 13-3: Percentage Distribution of Owners/ Managers of the Active Industrial Enterprises According to Their Opinions of Main Indicators During the Next Six Months Compared to Reference Month (September, 2009) in Gaza Strip

Indicator	Total	Not Exist	Much Worse	Somewhat Worse	/ About the Same/ Unchanged	Somewhat Better	Much Better	
Enterprise performance in general	100	:	:	5.6	55.5	38.9	:	
Production situation	100	16.7	:	5.6	49.9	27.8	:	
Volume of sales	100	11.1	:	5.6	50.0	33.3	:	
Employees productivity	100	5.6	:	5.6	88.8	:	:	
Obtaining needed raw materials and inputs	100	5.6	:	:	61.1	33.3	:	
Reaching the employees for their work place	100	:	:	:	100.0	:	:	
Regularity of work	100	:	:	5.6	66.6	27.8	:	
Level of employment	100	:	:	5.6	66.6	27.8	:	
Transporting finished goods to market	100	27.8	:	:	72.2	:	:	
Financial situations	100	:	:	5.6	61.1	33.3	:	
Banks credits & facilities	100	55.6	:	:	33.3	11.1	:	

(:) No Observations in the Sample

(:) تعني لا يوجد مشاهدات بالعينة

Table 14: Percentage Distribution of Owners/Managers of the Industrial Enterprises Opinion About the Factors Affecting Production Cost During the Third Quarter 2009 by Region

Factors		Opinion						
		No effect	Relatively weak effect	Weak effect	Relatively large effect	Large effect		
Foreign competition	Palestinian Territory	31.4	10.1	14.4	24.5	19.6		
	West bank	29.1	10.7	14.9	24.6	20.7		
	Gaza strip	72.2	:	5.6	22.2	:		
Informal Sector	Palestinian Territory	30.3	10.1	30.6	18.0	11.0		
	West bank	27.2	10.7	32.4	18.4	11.3		
	Gaza strip	83.3	:	:	11.1	5.6		
Local Competition	Palestinian Territory	14.3	4.3	19.6	35.8	26.0		
	West bank	13.3	3.9	19.7	36.2	26.9		
	Gaza strip	33.3	11.1	16.7	27.8	11.1		
Transport cost	Palestinian Territory	11.6	8.0	20.8	38.8	20.8		
	West bank	9.0	8.4	21.7	39.2	21.7		
	Gaza strip	55.5	:	5.6	33.3	5.6		
Political situation	Palestinian Territory	7.6	4.0	20.5	43.7	24.2		
	West bank	7.0	4.2	21.4	44.7	22.7		
	Gaza strip	16.6	:	5.6	27.8	50.0		
Costs of raw materials and inputs	Palestinian Territory	5.2	3.4	10.1	33.3	48.0		
	West bank	4.1	3.6	10.7	34.0	47.6		
	Gaza strip	22.2	:	:	22.2	55.6		

(:) No Observations in the Sample

(:) تعني لا يوجد مشاهدات بالعينة

2009

/

:15

Table 15: Percentage Distribution of the Frequency of Loans Requested From the Banks According to the Owners/Managers of the Industrial Enterprises Opinion During the Third Quarter 2009 by Region

Frequency	Gaza Strip	West Bank	Palestinian Territory	
No loan request	100.0	93.3	93.6	
Once	:	6.1	5.8	
2-5	:	0.6	0.6	5-2
Total	100	100	100	

(:) No Observations in the Sample

(:)

Table 16: Percentage Distribution of Owners/ Managers of the Industrial Enterprises According to Their Views About the Export Obstacles During the Third Quarter 2009 by Region

Problems	Region	Not applicable	I don't know	Large difficulty	Medium difficulty	Small difficulty	No difficulty		
Commitment to international market requirements	Palestinian Territory	-	-	-	-	-	-		
	West bank	0.8	:	2.2	4.4	11.0	81.6		
	Gaza strip	:	:	:	:	:	:		
Commitment to export market packaging requirements	Palestinian Territory	:	:	:	:	:	:		
	West bank	2.2	0.7	1.5	2.2	6.6	86.8		
	Gaza strip	:	:	:	:	:	:		
Price competition in the export market	Palestinian Territory	:	:	:	:	:	:		
	West bank	1.5	:	2.2	13.3	21.5	61.5		
	Gaza strip	:	:	:	:	:	:		
Compliance to quantity demanded and delivery time	Palestinian Territory	:	:	:	:	:	:		
	West bank	:	:	1.5	3.7	7.4	87.4		
	Gaza strip	:	:	:	:	:	:		
Export financing	Palestinian Territory	:	:	:	:	:	:		
	West bank	:	0.7	:	6.6	7.4	85.3		
	Gaza strip	:	:	:	:	:	:		
Marketing ability	Palestinian Territory	:	:	:	:	:	:		
	West bank	2.9	0.7	2.2	3.7	23.5	70.0		
	Gaza strip	:	:	:	:	:	:		
Regular achievement of raw materials	Palestinian Territory	:	:	:	:	:	:		
	West bank	3.7	:	2.2	5.9	22.8	65.4		
	Gaza strip	-	-	-	-	-	-		

(-) No Data Available

(:) No Observations in the Sample

(-)

(:)

Table 16 (Cont): Percentage Distribution of Owners/ Managers of the Industrial Enterprises According to Their Views About the Export Obstacles During the Third Quarter 2009 by Region

Problems	Region	Not applicable	I don't know	Large difficulty	Medium difficulty	Small difficulty	No difficulty		
Regular achievement of export	Palestinian Territory	-	-	-	-	-	-		
	West bank	:	:	1.5	8.1	38.2	52.2		
	Gaza strip	:	:	:	:	:	:		
Regular achievement of employee	Palestinian Territory	:	:	:	:	:	:		
	West bank	3.0	:	0.7	:	4.4	91.9		
	Gaza strip	:	:	:	:	:	:		
Palestinian export regulation and license	Palestinian Territory	:	:	:	:	:	:		
	West bank	:	1.5	2.2	2.9	10.3	83.1		
	Gaza strip	:	:	:	:	:	:		
Information access to the foreign market	Palestinian Territory	:	:	:	:	:	:		
	West bank	0.8	2.2	4.4	2.9	25.0	64.7		
	Gaza strip	:	:	:	:	:	:		
Traveling problems imposed on entering foreign markets	Palestinian Territory	:	:	:	:	:	:		
	West bank	2.3	0.7	8.8	5.9	21.3	61.0		
	Gaza strip	:	:	:	:	:	:		
Import regulation in the foreign market	Palestinian Territory	:	:	:	:	:	:		
	West bank	2.8	1.5	3.7	5.9	34.6	51.5		
	Gaza strip	:	:	:	:	:	:		
Costumer payment guarantee	Palestinian Territory	:	:	:	:	:	:		
	West bank	:	1.5	10.3	12.5	23.5	52.2		
	Gaza strip	-	-	-	-	-	-		

(-) No Data Available

(:) No Observations in the Sample

(-)

(:)

2009

:17

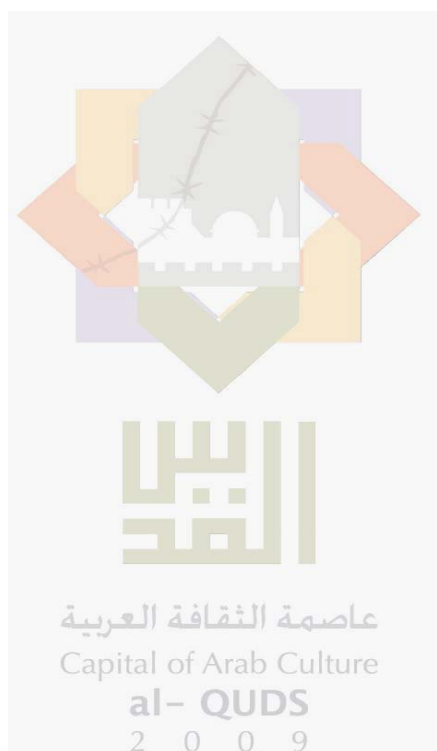
Table 17: Percentage of Mechanism of Finding Customers in the Export Market During the Third Quarter 2009 by Region

Approaching Customers	Gaza Strip	West Bank	Palestinian Territory	
Market researches	-	16.9	-	
Information gathered from commerce chamber industrial union etc...	-	11.0	-	
Participate in international exhibitions and organized business missions	-	20.6	-	
Self-organized visits to the export market	-	40.4	-	
Personal relationships and contacts	-	91.9	-	
Through internet	-	16.9	-	
Customer self initiative	-	72.8	-	

(-) No Data Available

(-)

PAGE NUMBERS OF ENGLISH TEXT ARE PRINTED IN SQUARE BRACKETS.
TABLES ARE PRINTED IN THE ARABIC ORDER (FROM RIGHT TO LEFT).



This document is prepared in accordance with the standard procedures stated in the Code of Practice for Palestine Official Statistics 2006

© October, 2009
All rights reserved.

Suggested Citation:

Palestinian Central Bureau of Statistics, 2009. *Survey of the Perceptions of the Owners / Managers of Industrial Enterprises Regarding the Economic Situation, September 2009. Press Release on the survey's results.*
Ramallah- Palestine

All correspondence should be directed to:
Dissemination and Documentation Department\Division of User Services
Palestinian Central Bureau of Statistics.
P.O. Box 1647, Ramallah - Palestine.

Tel: (972/970) 2 2982700
Fax: (972/970) 2 2982710
E-mail: diwan@pcbs.gov.ps
Web-site: <http://www.pcbs.gov.ps>

Table of Contents

Subject	Page
Press Release: Main Findings of the Survey of the Perceptions of the Owners/Managers of Industrial Enterprises Regarding the Economic Situation, September 2009	[5]
Tables	9

Press Release

Main Findings of the Survey of the Perceptions of the Owners/Managers of Industrial Enterprises Perception Regarding the Economic Situation, September 2009

The following statement presents the basic findings of the 55th round on the perceptions of the owners/managers of industrial enterprises regarding the economic situation for September 2009. The round was conducted during the period 03-23/10/ 2009, using September 2009 as the reference month. The aim of the survey is to observe and monitor the trends of the opinions of the owners/managers of the industrial enterprises. The sample size was 358 industrial enterprises in the West Bank, and 55 industrial enterprises in Gaza Strip. A two-stage sample was designed for this survey: in the first stage, the industrial survey 2007 was used as a sampling frame for the survey, while in the second stage all the industrial enterprises constituting approximately 70% of the total industrial production, were selected.

1. Performance of industrial establishments in September 2009

1-1 Overall performance

According to 19.2% of the owners / managers of the industrial establishments, the production performance of their establishments during September 2009 was improved compared with August 2009 (19.1% for the West Bank and 22.3% for Gaza Strip).

1-2 Production cost determinants

91.4% of the owners/managers of the active industrial establishments during the third quarter 2009 reported that the effect of the costs of raw materials and inputs were the most important factors on the production cost (92.3% for the West Bank and 77.8% for Gaza Strip); Alternatively 88.4% of the opinions of the owners of the industrial establishments pointed out the influence of the political situation (88.8% of the West Bank and 83.4% of Gaza Strip). Moreover, 80.4% of the owners/managers of the active industrial establishments identified the impact of The Transportation Cost on production cost, (82.6% for the West Bank and 44.5% for Gaza Strip).

1-3 Borrowing and financing

Survey results show weak borrowing by the active industrial establishments from operating banks in the Palestinian Territory during the third quarter 2009; 93.6% of the owners of industrial establishments stated that they refrained from borrowing from the operating banks (93.3% for the West Bank and 100.0% for Gaza Strip), while 5.8% of them did apply for bank loans only one time; 0.6% applied 2-5 times.

2. Challenges

2-1 Drop in sales level

The expectations of 27.1% of the owners/managers of the active industrial establishments in West Bank revealed that the main reason for an expected drawback or steady sales level is due to the consumers purchasing power of the plunge; on the other hand 100% believe that the main reason is due to the Decrease in demand on the establishment products in Gaza Strip.

2-2 Exports Obstacles

The owners of the active industrial establishments during the third quarter 2009 indicated a number of difficulties that hinder exports; 46.3% of the owners of the exporting establishments in the Palestinian Territory indicated that their establishments face hindrances because of Customer payment guarantee; 47.8% believed that Regular achievement of export is an additional obstacle faces the exporting process; 36.0% of the respondent indicated that the Traveling problems imposed on entering foreign markets hindered the export process.

2-3 Local and external competition

In the Palestinian Territory, 92.0% of the owners of the active industrial establishments indicated that the main product of their establishments faced local or foreign competition, (93.2% for the West Bank and 72.2% for Gaza Strip).

According to 49.2% of the owners of the active industrial establishments in the Palestinian Territory, the main product faced local competition (47.3% for the West Bank and 92.3% for Gaza Strip); on the other hand, 13.3% of the owners of the industrial establishments indicated that their main product faced foreign competition (13.5% for the West Bank and 7.7% for Gaza Strip).

2-4 Employment

According to 9.5% of the owners of the active industrial establishments in the Palestinian Territory, their establishments laid off workers in September 2009 (9.7% for the West Bank and 5.6% for Gaza Strip).

3. Expectations

3-1 Short term

The short term expectations of the owners/ managers of the active industrial establishments in the short term, i.e. after one month of the reference month (September 2009), shows that 53.2% expected improvement in their production in general (55.7% in the West Bank and 11.1% in Gaza Strip).

20.4% of the owners/ managers of the active industrial establishments in the Palestinian Territory expected an employment increase during October 2009 (20.7% in the West Bank and 16.7% in Gaza Strip).

The results show that 50.7% of the owners/ managers of the industrial establishments in the Palestinian Territory expected sales to increase during October 2009 (53.4% in the West Bank and 5.6% in Gaza Strip).

3-2 Mid term

The expectations of the owners/ managers of the active industrial establishments in the mid term (in the next six months) were as follows: 56.2% business people expected improvement in production in the next six months (57.8% in the West Bank and 27.8% in Gaza Strip).

According to expectations concerning employment in the Palestinian Territory, 26.6% expect an increase in employment (26.6% in the West Bank and 27.8% in Gaza Strip).

Sales during the next six months will rise, according to the expectations of 55.3% of the owners/ managers of the active industrial establishments in the Palestinian Territory (56.5% in the West Bank and 33.3% in Gaza Strip).

Figure 1: Percentage of Industrial Enterprises Owners / Managers who Encountered Improvement in Economic Conditions during September 2009 Compared to the Previous Month for the Main Indicators by Region

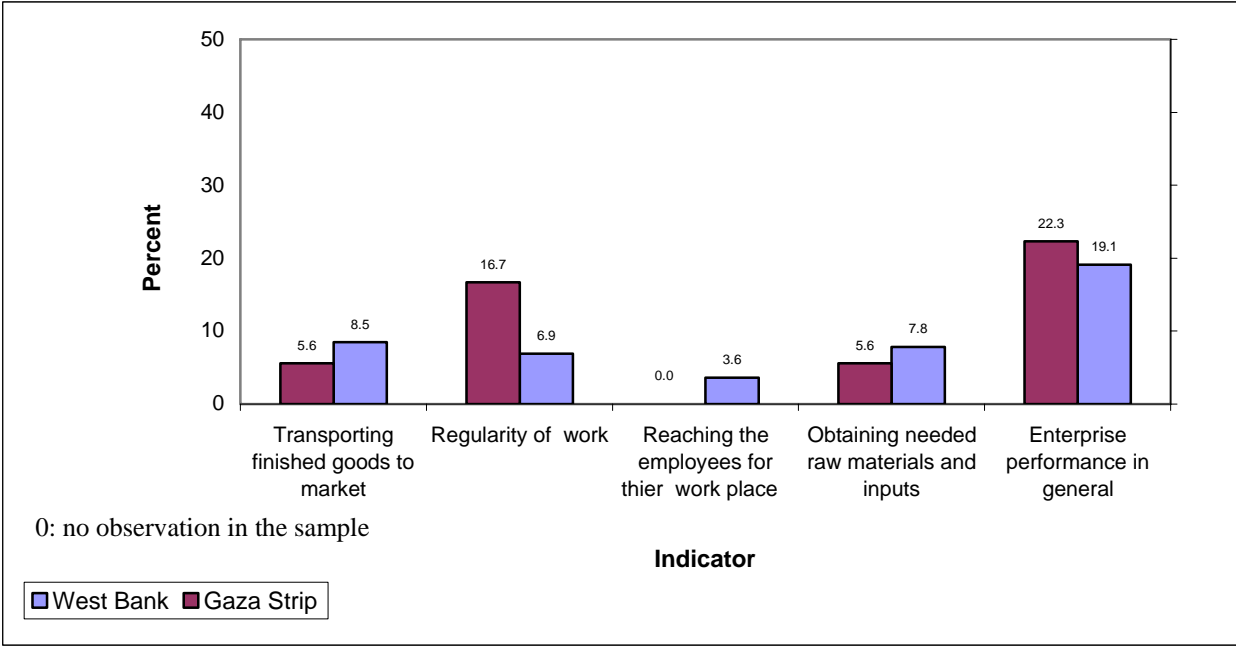
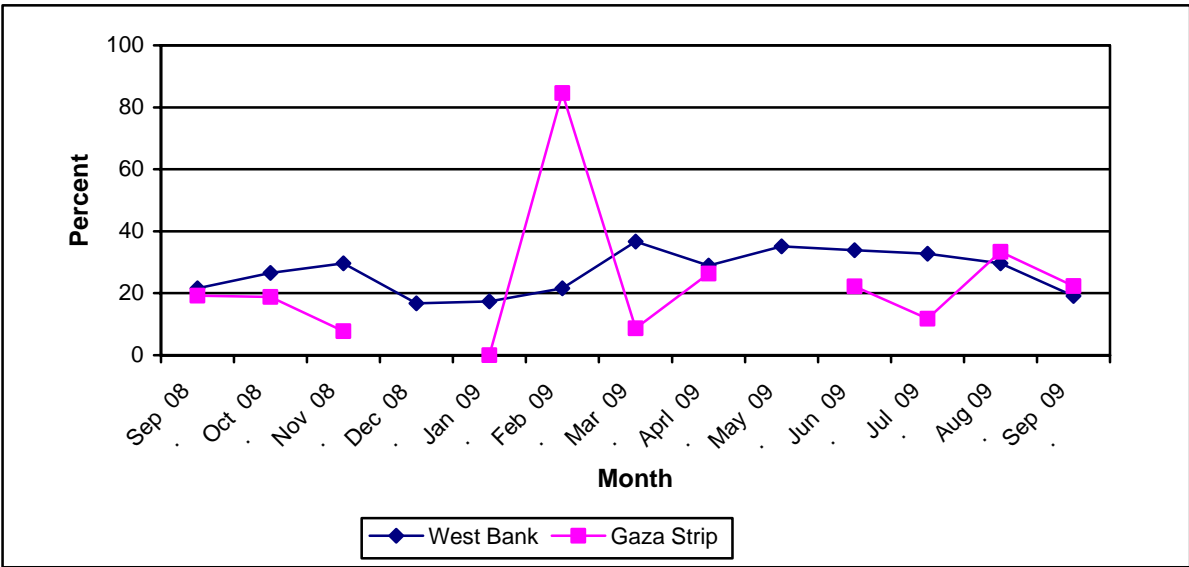


Figure 2: Trends of Enterprises Witnessed an Improved Situation in Production Performance during September 2009 Compared to the Previous Month by Region



Data Collection and processing of this document has been produced with the financial assistance of the European Union. The contents of this document are the sole responsibility of the PCBS.