



%54.9

2011

10

3

(29-15)

(2010-2000)

%40.2

%29.6

2010

(29-20)

%59.8

(19-15)

5.9

2010

4.2

.2000

2011

4.17

3.8

(2010-2000)

5.5

2010

4.9

.2000

.2000

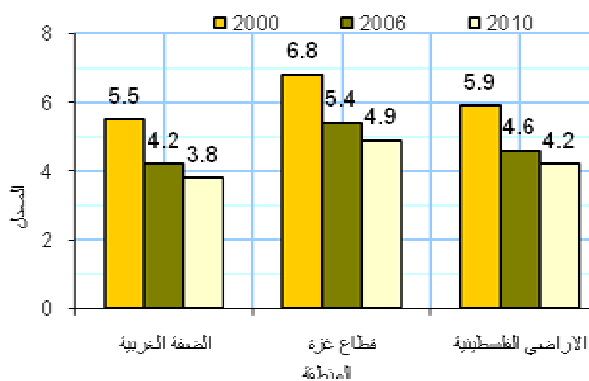
6.8

2010

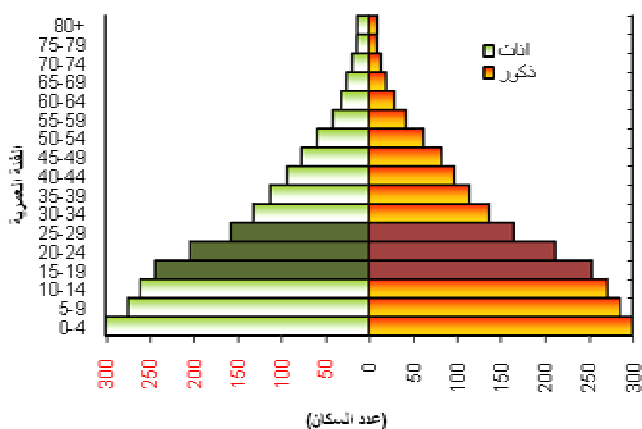
( 29-25)

%26.5

2010 2006 2000



2011



( 29-15)

2008

2008

%92.3

( 29-15)

%45.0

2010

%44.7

2010

%81.5

( 29-15)

%85.6

( 29-15)

18)

%50.4

( 17-15)

%55.9

( 29-15)

.( 29-23)

%11.0 ( 22-

%77.6

2008

)

.( 29-15)

(29-15)

(

%30.2

2010

( 29-15)



	10	9	%34.6)	%30.1	
					.( %25.4
			15)	2010	
	(29-15)				( 29-
		2009	29-15)	%8.1	
%87.4		%87.9		.%10.0	(
%47.6	%88.6		%2.3	%3.7	
		2004	%0.8		
			0.7	%0.9	( 29-15)
					. %
	.2009	%84.4	%91.0		
%32.9				2011	
	%36.0				(29-15)
%14.3	2009	%27.9		29,700	140
2009		2004			
	%24.5	%40.9		2,600	
		2009		%45.5	
%67.0		%63.2			2011
	%57.0			%59.5	
	2004	%34.9			
%53.3	%72.7		31.2		
					.%
	.2009				
	29-15	%83.2		29-15	%49.8
	%86.3			2010	
	%33.1	%80.1	%65.1	%40.4	
%29.0	%35.6			%87.2	
				%27.1	
					%24.3



**100      3**

( 29-15)  
(%31.0)

29-15      %2.8

%3.3

. %23.6

. %2.3

**29-15**

**2010**

2.7	2.9	2.8
3.1	3.5	3.3
2.3	2.2	2.3

(970/972) 02-2982700:  
(970/972) 02- 2982710 :  
1800300300 :  
diwan@pcbs.gov.ps :

%15.0      2010

%28.7

29-15

. %0.7

**29-15**

**2010**

8.3	19.1	15.0
16.2	36.3	28.7
0.0	1.1	0.7

**2011**

%33.5      2011

(29-15)

%29.9

%35.7

%33.9

%38.4      ( 19-15)

.( 29-25)      %28.2

( 29-15)

.%40.1

13