



2007

/

2007

/

:

[.http://atlas.pcbs.gov.ps](http://atlas.pcbs.gov.ps)

<http://www.pcbs.gov.ps>

2006

.2007 - 1428 ©

:

/

.2007

2007

:

/

- **1647** . .

(970/972) 2 240 6343 :

(970/972) 2 240 6340 :

<http://www.pcbs.gov.ps> :

diwan@pcbs.gov.ps :



2007 -

9

/

2007

13

. 481

(2006 - 2006)

2006

346

/
2007

/9/23-3

/

29

2007

2007

(138 343) 481
2004

%70

2004

/

20

2007

2007

/

%40.3 :

%12.4

2007

2007

%27.8 :

%15.8

%40.3 :

%15.8

%40.3

:

%13.9

%15.3

:

6.9%

:

/ %70.0

%53.5

%18.2

%24.1

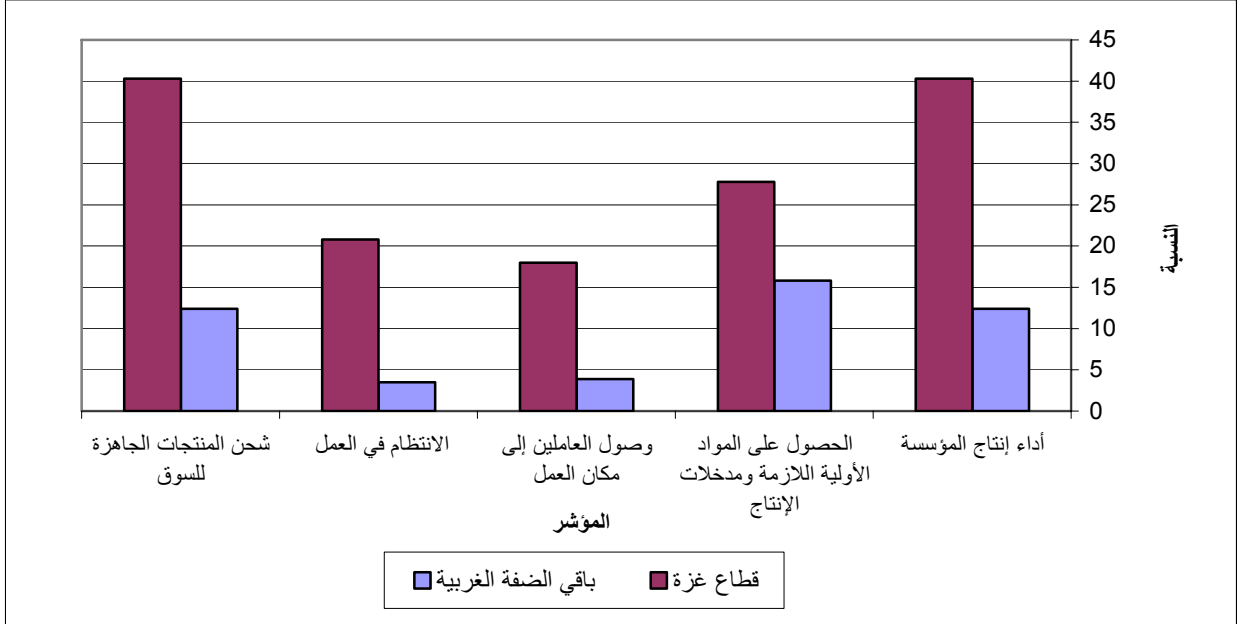
:
 %94.6
 %93.1 %100.0)
 .(
 %79.8
 %20.2 (%74.6 %97.2)
 .(%2.8 %25.4)
 :
 %13.3
 %80.7 (%8.1 %31.9) 2007
 %62.5 %85.7)
 .(
 - / /
 / %30.6 -(2007)
 .(%27.8 %31.4)
 %14.0) %13.9 2007
 %30.9 (%13.9
 %31.8) 2007
 .(%27.8
 ()
 %41.5
 .(%39.7 %41.8)
 %21.5
 .(%19.8 %28.6)
 %42.7
 %43.4)
 .(%39.7

2007

2007

:1

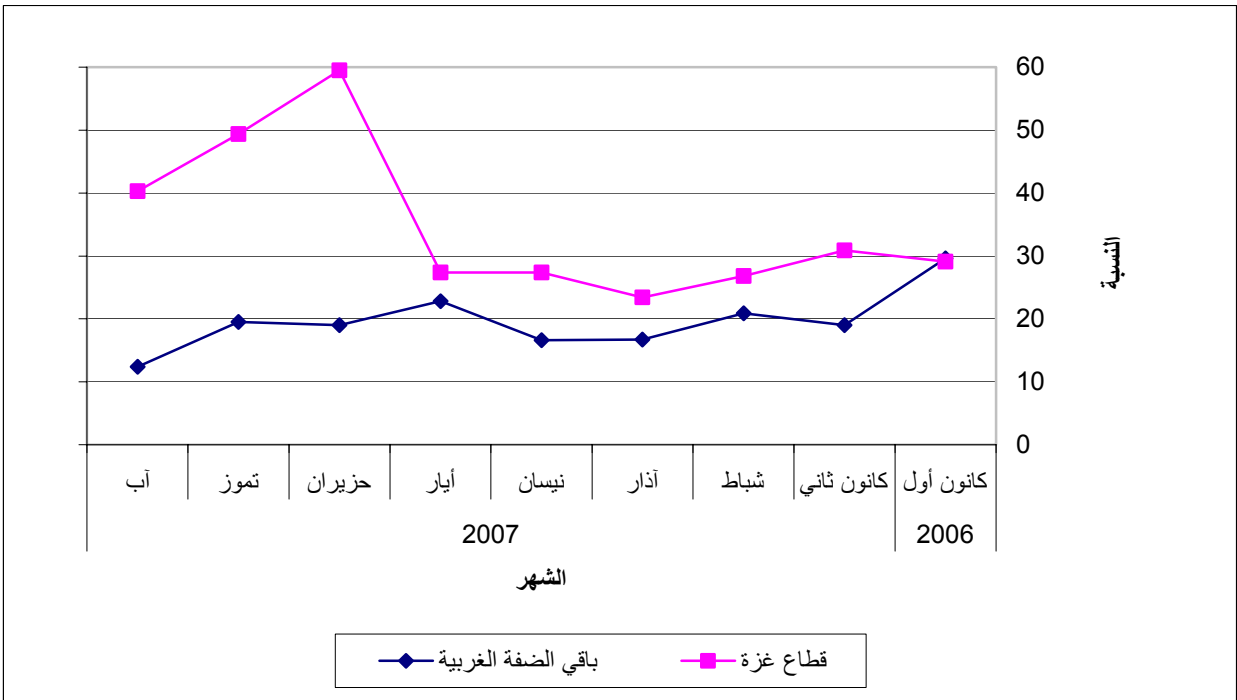
2007



.2007

:2

2007



2007

Table 1-1: Percentage of Industrial Establishments Encountered Worse Situation During the Reference Month Compared to that before the Reference Month for the Main Indicators in Remaining West Bank and Gaza Strip 2007

Indicator	Reference Month								
	2007								2006
	Aug.	Jul.	Jun.	May	April	Mar.	Feb.	Jan.	Dec.
Establishment performance in general	18.4	27.0	29.5	24.0	19.4	18.6	22.7	22.4	29.6
Obtaining needed raw materials and inputs	18.4	22.3	23.2	16.0	13.1	10.5	12.5	11.4	15.1
Problems of employees reaching place of work	6.9	6.0	10.7	4.5	2.3	3.3	3.8	4.3	3.0
Regularity of work	7.2	5.7	13.9	7.0	3.3	5.7	9.1	8.5	11.2
Transporting finished goods to market	18.4	19.5	27.6	20.8	18.4	16.2	18.8	20.6	22.9

:2-1

2007

Table 1-2: Percentage of Industrial Establishments Encountered Worse Situation During the Reference Month Compared to that before the Reference Month for the Main Indicators in Remaining West Bank 2007

Indicator	Reference Month								
	2007								2006
	Aug.	Jul.	Jun.	May	April	Mar.	Feb.	Jan.	Dec.
Establishment performance in general	12.4	19.5	19.0	22.8	16.6	16.7	20.9	19.0	29.6
Obtaining needed raw materials and inputs	15.8	11.5	10.4	13.4	11.3	7.1	10.2	7.1	15.1
Problems of employees reaching place of work	3.9	3.6	4.4	2.0	1.9	2.5	4.0	4.1	3.0
Regularity of work	3.5	2.4	5.6	4.7	3.4	4.6	9.4	8.5	11.2
Transporting finished goods to market	12.4	13.1	16.9	16.9	14.7	14.7	16.4	18.8	22.9

Table 1-3: Percentage of Industrial Establishments Encountered Worse Situation During the Reference Month Compared to that before the Reference Month for the Main Indicators in Gaza Strip 2007

Indicator	Reference Month								
	2007								2006
	Aug.	Jul.	Jun.	May	April	Mar.	Feb.	Jan.	Dec.
Establishment performance in general	40.3	49.4	59.5	27.4	27.4	23.4	26.8	30.9	29.1
Obtaining needed raw materials and inputs	27.8	54.1	59.5	22.6	17.9	19.1	18.0	22.4	21.4
Problems of employees reaching place of work	18.0	13.0	28.1	10.7	3.2	5.3	3.3	4.7	1.9
Regularity of work	20.8	15.3	37.1	12.7	3.2	8.5	8.3	8.4	3.9
Transporting finished goods to market	40.3	38.8	57.3	30.4	28.5	20.2	24.5	25.3	26.2

Table 2-1: Percentage Distribution of Owners/ Managers of the Industrial Establishments According to Their Opinions for Main Indicators During August 2007 Compared with July 2007 in Remaining West Bank and Gaza Strip

Problem	Total	Much Worse	Somewhat Worse	/ About the Same/ Unchanged	Somewhat Better	Much Better	
Establishment performance in general	100	3.0	15.4	53.2	26.9	1.5	
Production situation	100	3.0	20.2	47.5	27.8	1.5	
Employees productivity	100	3.3	17.8	53.8	23.6	1.5	
Obtaining needed raw materials and inputs	100	3.3	15.1	70.7	9.7	1.2	
Problems of employees reaching place of work	100	1.5	5.4	86.8	5.7	0.6	
Regularity of work	100	1.8	5.4	83.1	8.8	0.9	
Transporting finished goods to market	100	3.0	15.4	66.2	14.5	0.9	
Financial situations	100	3.6	16.0	62.9	16.6	0.9	
Banks credits & facilities	100	2.1	6.6	82.8	7.9	0.6	
Level of employment	100	2.1	9.1	74.9	13.3	0.6	
Value of sales	100	3.3	23.3	43.8	27.8	1.8	

Table 2-2: Percentage Distribution of Owners/ Managers of the Industrial Establishments According to Their Opinions for Main Indicators During August 2007 Compared with July 2007 in Remaining West Bank

Problem	Total	Much Worse	Somewhat Worse	/ About the Same/ Unchanged	Somewhat Better	Much Better	
Establishment performance in general	100	0.4	12.0	55.2	30.9	1.5	
Production situation	100	0.4	17.8	48.3	32.0	1.5	
Employees productivity	100	0.4	15.4	56.1	26.6	1.5	
Obtaining needed raw materials and inputs	100	1.5	14.3	71.9	10.8	1.5	
Problems of employees reaching place of work	100	-	3.9	89.1	6.2	0.8	
Regularity of work	100	-	3.5	85.6	9.7	1.2	
Transporting finished goods to market	100	-	12.4	71.4	15.4	0.8	
Financial situations	100	1.2	12.7	67.5	17.8	0.8	
Banks credits & facilities	100	1.5	5.4	83.0	9.3	0.8	
Level of employment	100	0.4	6.6	77.9	14.3	0.8	
Value of sales	100	0.4	20.8	44.5	32.4	1.9	

(-) Number of observations is too small

(-)

Table 2-3: : Percentage Distribution of Owners/ Managers of the Industrial Establishments According to Their Opinions for Main Indicators During August 2007 Compared with July 2007 in Gaza Strip

Problem	Total	Much Worse	Somewhat Worse	/ About the Same/ Unchanged	Somewhat Better	Much Better	
Establishment performance in general	100	12.5	27.8	45.8	12.5	1.4	
Production situation	100	12.5	29.2	44.4	12.5	1.4	
Employees productivity	100	13.9	26.4	45.8	12.5	1.4	
Obtaining needed raw materials and inputs	100	9.7	18.1	66.6	5.6	-	
Problems of employees reaching place of work	100	6.9	11.1	77.8	4.2	-	
Regularity of work	100	8.3	12.5	73.6	5.6	-	
Transporting finished goods to market	100	13.9	26.4	47.2	11.1	1.4	
Financial situations	100	12.5	27.8	45.8	12.5	1.4	
Banks credits & facilities	100	4.2	11.1	81.9	2.8	-	
Level of employment	100	8.3	18.1	63.9	9.7	-	
Value of sales	100	13.9	31.9	41.7	11.1	1.4	

(-) Number of observations is too small

(-)

Table 3: Percentage of Industrial Establishments Encountered Worse Situation During the Reference Month (August 2007) Compared to that before the Reference Month for the Main Indicators by Region

	Region			
	Gaza Strip	Remaining West Bank	Remaining West Bank and Gaza Strip	
Employees productivity	40.3	15.8	21.1	
Financial situations	40.3	13.9	19.6	
Banks credits & facilities	15.3	6.9	8.7	
Level of employment	26.4	7.0	11.2	
Value of sales	45.8	21.2	26.6	

/

:4

2007

Table 4: Percentage Distribution of Owners/Managers of the Industrial Establishments According to the Reasons for Sales Level Stability or Decline by Region During August 2007

Reason	Gaza Strip	Remaining West Bank	Remaining West Bank and Gaza Strip	
Decrease in demand	-	5.6	3.4	
Difficulties in exporting finished goods	2.7	3.7	3.4	
Decline in the consumer purchasing power	6.1	53.5	35.6	
Obstacles in marketing	-	1.9	1.4	
Competence product	-	1.9	1.1	
Seasonally related	3.0	24.1	16.1	
Military check points/ israeli actions/ closures	70.0	3.7	28.7	/
Other	18.2	5.6	10.3	/
Total	100	100	100	

(-) Number of observations is too small

(-)

2007

:5

Table 5: Percentage Distribution of the Industrial Establishments According to the Employment Mobility During August 2007 by Region

Employment Mobility	Gaza Strip	Remaining West Bank	Remaining West Bank and Gaza Strip
Hiring employees	5.6	6.2	6.0
Firing employees	31.9	8.1	13.3
No change	62.5	85.7	80.7
Total	100	100	100

2007

/

:6

Table 6: Percentage Distribution of the Existing of Competence of the Main Product According to the Owners\ Managers of the Industrial Establishments During August 2007 by Region

Competence existence	Gaza Strip	Remaining West Bank	Remaining West Bank and Gaza Strip
There is competition	100.0	93.1	94.6
There is no competition	-	6.9	5.4
Total	100	100	100

(-) Number of observations is too small

(-)

2007

/

:7

Table 7: Percentage Distribution of the Type of Competence According to the Owners\ Managers of the Industrial Establishments During August 2007 by Region

Type of competence	Gaza Strip	Remaining West Bank	Remaining West Bank and Gaza Strip
Local	97.2	74.6	79.8
Foreign	2.8	25.4	20.2
Total	100	100	100

Table 8: Expectations of Owners/ Managers of the Industrial Establishments for the Month that Follow the Reference Month Compared With the Reference (August, 2007) Month for the Main Indicators by Region 2007

Indicator	Reference Month								
	2007								2006
	Aug.	Jul.	Jun.	May.	April.	Mar.	Feb.	Jan.	Dec.
Percentage of who are expecting better establishment situation									
Remaining West Bank and Gaza Strip.	30.6	35.1	33.0	36.2	45.0	50.3	40.3	36.0	34.4
Remaining West Bank	31.4	39.7	34.8	37.0	43.7	50.8	38.0	31.1	32.2
Gaza Strip	27.8	21.0	28.1	34.3	48.4	49.0	45.8	48.6	39.8
Percentage of who are expecting higher employment level									
Remaining West Bank and Gaza S.	13.9	19.3	13.0	15.3	22.2	20.1	14.9	14.6	10.1
Remaining West Bank	14.0	20.4	13.2	13.1	18.5	16.7	12.5	8.9	11.4
Gaza Strip	13.9	16.0	12.4	20.6	32.7	28.7	20.5	28.9	6.8
Percentage of who are expecting higher sales volume									
Remaining West Bank and Gaza S.	30.9	35.1	32.8	35.5	44.2	48.5	40.2	35.8	33.3
Remaining West Bank	31.8	39.7	34.4	36.0	42.6	47.9	37.8	30.7	31.0
Gaza Strip	27.8	21.0	28.1	34.3	48.4	50.0	46.3	48.6	39.8

Table 9: Expectations of Owners/ Managers of the Industrial Establishments for the Six Months that Follow the Reference Month Compared With the Reference Month (August, 2007) for the Main Indicators by Region

Indicator	Reference Month								
	2007								2006
	Aug.	Jul.	Jun.	May.	April.	Mar.	Feb.	Jan.	Dec.
Percentage of who are expecting better establishment situation									
Remaining West Bank and Gaza S.	41.5	40.3	40.7	42.1	62.8	67.0	69.8	69.7	34.7
Remaining West Bank	41.8	42.9	43.7	44.5	63.4	69.2	72.4	71.5	29.9
Gaza Strip	39.7	32.0	32.2	36.3	61.3	61.3	63.5	65.4	46.8
Percentage of who are expecting higher employment level									
Remaining West Bank and Gaza S.	21.5	20.3	14.8	20.3	30.2	30.1	30.9	29.2	13.6
Remaining West Bank	19.8	18.8	14.0	19.8	25.4	24.7	28.8	24.8	8.1
Gaza Strip	28.6	25.3	17.2	21.6	44.0	44.1	36.0	40.1	27.5
Percentage of who are expecting higher sales volume									
Remaining West Bank and Gaza S.	42.7	40.6	41.2	42.2	62.6	67.0	70.1	69.5	35.2
Remaining West Bank	43.4	43.7	44.3	44.7	63.0	68.8	72.5	71.1	30.3
Gaza Strip	39.7	30.7	32.2	36.3	61.3	62.4	64.0	65.4	47.7

Table 10: Expectations of Owners/ Managers of the Industrial Establishments about Better Expectations for their Establishments for the Month that Follow the Reference Month (August, 2007) Compared With the Reference Month by Region

Indicator	Region			
	Gaza Strip	Remaining West Bank	Remaining West Bank and Gaza Strip	
Establishment performance in general	27.8	27.5	27.6	
Employees productivity	27.8	25.2	25.7	
Obtaining needed raw materials and inputs	26.4	14.0	16.7	
Problems of employees reaching place of work	13.9	8.1	9.4	
Regularity of work	12.5	13.2	13.0	
Transporting finished goods to market	26.4	14.7	17.3	
Financial situations	27.8	15.9	18.5	
Banks credits & facilities	8.3	12.4	11.5	

Table 11: Expectations of Owners/ Managers of the Industrial Establishments about Better Expectations for their Establishments for the Six Months that Follow the Reference Month (August ,2007) Compared With the Reference Month for the Main Indicators by Region

Indicator	Region			
	Gaza Strip	Remaining West Bank	Remaining West Bank and Gaza Strip	
Establishment performance in general	39.7	39.2	39.2	
Employees productivity	39.7	33.8	34.9	
Obtaining needed raw materials and inputs	39.7	18.2	22.4	
Problems of employees reaching place of work	15.9	10.9	11.8	
Regularity of work	28.6	16.3	18.7	
Transporting finished goods to market	39.7	18.2	22.4	
Financial situations	39.7	24.4	27.4	
Banks credits & facilities	9.5	13.6	12.8	

(أب، 2007)

/

:1-12

Table 12-1: Percentage Distribution of Owners/ Managers of the Industrial Establishments According to Their Opinions for Main Indicators for the Month that Follow the Reference Month (August, 2007) Compared With the Reference Month in Remaining West Bank and Gaza Strip

Problem	Total	Much Worse	Somewhat Worse	About the Same/ Unchanged	Somewhat Better	Much Better
Establishment performance in general	100	5.5	18.8	48.2	27.0	0.6
Production situation	100	5.8	23.9	39.7	29.7	0.9
Value of sales	100	6.1	25.2	37.8	30.0	0.9
Employees productivity	100	5.8	21.5	47.0	24.5	1.2
Obtaining needed raw materials and inputs	100	4.2	13.0	66.1	16.4	0.3
Problems of employees reaching place of work	100	2.1	4.8	83.7	9.4	-
Regularity of work	100	2.4	13.6	70.9	12.7	0.3
Level of employment	100	2.7	11.8	71.5	13.6	0.3
Transporting finished goods to market	100	4.2	13.6	64.8	17.0	0.3
Financial situations	100	4.5	18.2	58.8	18.2	0.3
Banks credits & facilities	100	2.1	7.9	78.5	11.5	-

(-) Number of observations is too small

(-)

(أب، 2007)

/

:2-12

Table 12-2: Percentage Distribution of Owners/ Managers of the Industrial Establishments According to Their Opinions for Main Indicators for the Month that Follow the Reference Month (August, 2007) Compared With the Reference Month in Remaining West Bank

Problem	Total	Much Worse	Somewhat Worse	/ About the Same/ Unchanged	Somewhat Better	Much Better	
Establishment performance in general	100	1.6	15.1	55.8	26.7	0.8	
Production situation	100	1.9	21.3	45.4	30.2	1.2	
Value of sales	100	2.3	23.3	42.6	30.6	1.2	
Employees productivity	100	1.9	18.6	54.3	23.6	1.6	
Obtaining needed raw materials and inputs	100	0.4	9.3	76.3	13.6	0.4	
Problems of employees reaching place of work	100	-	2.3	89.6	8.1	-	
Regularity of work	100	-	10.9	75.9	12.8	0.4	
Level of employment	100	0.4	8.5	77.1	13.6	0.4	
Transporting finished goods to market	100	-	8.9	76.4	14.3	0.4	
Financial situations	100	0.4	14.3	69.4	15.5	0.4	
Banks credits & facilities	100	1.6	6.6	79.4	12.4	-	

(-) Number of observations is too small

(-)

(آب، 2007)

/

:3-12

Table 12-3: Percentage Distribution of Owners/ Managers of the Industrial Establishments According to Their Opinions for Main Indicators for the Month that Follow the Reference Month (August, 2007) Compared With the Reference Month in Gaza Strip

Problem	Total	Much Worse	Somewhat Worse	/ About the Same/ Unchanged	Somewhat Better	Much Better	
Establishment performance in general	100	19.4	31.9	20.9	27.8	-	
Production situation	100	19.4	33.3	19.5	27.8	-	
Value of sales	100	19.4	31.9	20.9	27.8	-	
Employees productivity	100	19.4	31.9	20.9	27.8	-	
Obtaining needed raw materials and inputs	100	18.1	26.4	29.1	26.4	-	
Problems of employees reaching place of work	100	9.7	13.9	62.5	13.9	-	
Regularity of work	100	11.1	23.6	52.8	12.5	-	
Level of employment	100	11.1	23.6	51.4	13.9	-	
Transporting finished goods to market	100	19.4	30.6	23.6	26.4	-	
Financial situations	100	19.4	31.9	20.9	27.8	-	
Banks credits & facilities	100	4.2	12.5	75.0	8.3	-	

(-) Number of observations is too small

(-)

(أب، 2007)

/

:1-13

Table 13-1: Percentage Distribution of Owners/ Managers of the Industrial Establishments According to Their Opinions for Main Indicators During the Next Six Months Compared with Reference Month (August, 2007) in Remaining West Bank and Gaza Strip

Problem	Total	Much Worse	Somewhat Worse	/ About the Same/ Unchanged	Somewhat Better	Much Better	
Establishment performance in general	100	7.2	20.2	33.4	38.3	0.9	
Production situation	100	9.7	23.1	25.7	39.9	1.6	
Value of sales	100	9.7	25.5	22.1	41.1	1.6	
Employees productivity	100	9.7	19.6	35.8	34.0	0.9	
Obtaining needed raw materials and inputs	100	6.5	13.7	57.4	21.8	0.6	
Problems of employees reaching place of work	100	4.4	8.1	75.7	11.8	-	
Regularity of work	100	5.9	15.3	60.1	18.1	0.6	
Level of employment	100	4.4	16.2	57.9	20.9	0.6	
Transporting finished goods to market	100	6.5	16.8	54.3	21.8	0.6	
Financial situations	100	9.0	17.4	46.2	26.8	0.6	
Banks credits & facilities	100	3.1	10.9	73.2	12.5	0.3	

(-) Number of observations is too small

(-)

(أب، 2007)

/

:2-13

Table 13-2: Percentage Distribution of Owners/ Managers of the Industrial Establishments According to Their Opinions for Main Indicators During the Next Six Months Compared with Reference Month (August, 2007) in Remaining West Bank

Problem	Total	Much Worse	Somewhat Worse	/ About the Same/ Unchanged	Somewhat Better	Much Better	
Establishment performance in general	100	1.6	18.6	40.6	38.0	1.2	
Production situation	100	4.7	21.7	31.8	39.9	1.9	
Value of sales	100	4.7	25.2	26.7	41.5	1.9	
Employees productivity	100	4.7	17.8	43.7	32.6	1.2	
Obtaining needed raw materials and inputs	100	1.6	11.2	69.0	17.4	0.8	
Problems of employees reaching place of work	100	1.2	5.4	82.5	10.9	-	
Regularity of work	100	3.1	12.8	67.8	15.5	0.8	
Level of employment	100	1.2	14.0	65.0	19.0	0.8	
Transporting finished goods to market	100	0.8	14.3	66.7	17.4	0.8	
Financial situations	100	3.9	15.1	56.6	23.6	0.8	
Banks credits & facilities	100	2.3	10.1	74.0	13.2	0.4	

(-) Number of observations is too small

(-)

Table 13-3: Percentage Distribution of Owners/ Managers of the Industrial Establishments According to Their Opinions for Main Indicators During the Next Six Months Comparing with Reference Month (August, 2007) in Gaza Strip

Problem	Total	Much Worse	Somewhat Worse	About the Same/ Unchanged	Somewhat Better	Much Better	
Establishment performance in general	100	30.2	27.0	3.1	39.7	-	
Production situation	100	30.2	28.6	1.5	39.7	-	
Value of sales	100	30.2	27.0	3.1	39.7	-	
Employees productivity	100	30.2	27.0	3.1	39.7	-	
Obtaining needed raw materials and inputs	100	27.0	23.8	9.5	39.7	-	
Problems of employees reaching place of work	100	17.5	19.0	47.6	15.9	-	
Regularity of work	100	17.5	25.4	28.5	28.6	-	
Level of employment	100	17.5	25.4	28.5	28.6	-	
Transporting finished goods to market	100	30.2	27.0	3.1	39.7	-	
Financial situations	100	30.2	27.0	3.1	39.7	-	
Banks credits & facilities	100	6.3	14.3	69.9	9.5	-	

(-) Number of observations is too small

(-)