



/

**2005**

**2005** /

.2005 - 1426 ©

:

/

.2005

2005

. -

:

/

- 1647 . .

(970/972) 2 240 6343 :

<http://www.pcbs.gov.ps> :

(970/972) 2 240 6340 :

[diwan@pcbs.gov.ps](mailto:diwan@pcbs.gov.ps) :



/

**2005**

/

.2005

.1

.2



/  
2005

2005

.2000      %15.7      %12.7      2005

/      2005  
2005/8/23-2005/8/2

50      211      )      261  
%70

2003      50      100

:

2005      %5.4      %9.4  
2005      %44.8

%8.6      %9.6

%10.2

2005

%2.2

%19.0    %7.4

%56.5

%20.0

%3.0

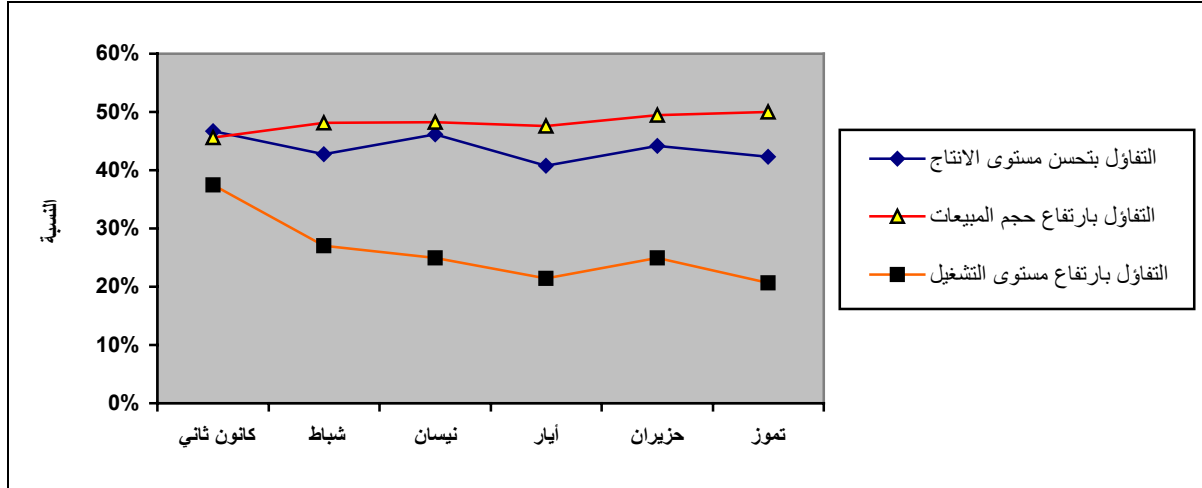
%20.1

	%31.6		%43.5	
%54.2	%56.4			
	%39.3			
		.2005		%27.0
				.2005
				:
-( )		-		/
				/
	%16.4	(	%46.3	%42.3
	%41.3	(	%4.9	%41.3)
.(	%48.8		%39.2)	%19.5)
		%7.0		%20.7
				%72.3
	%14.7			%41.5
	%79.0			
				%48.7
				%50.0
%32.6			%17.4	
		.2005		
	%48.8			%50.3
	%14.6			%18.2
%31.5	%36.6			

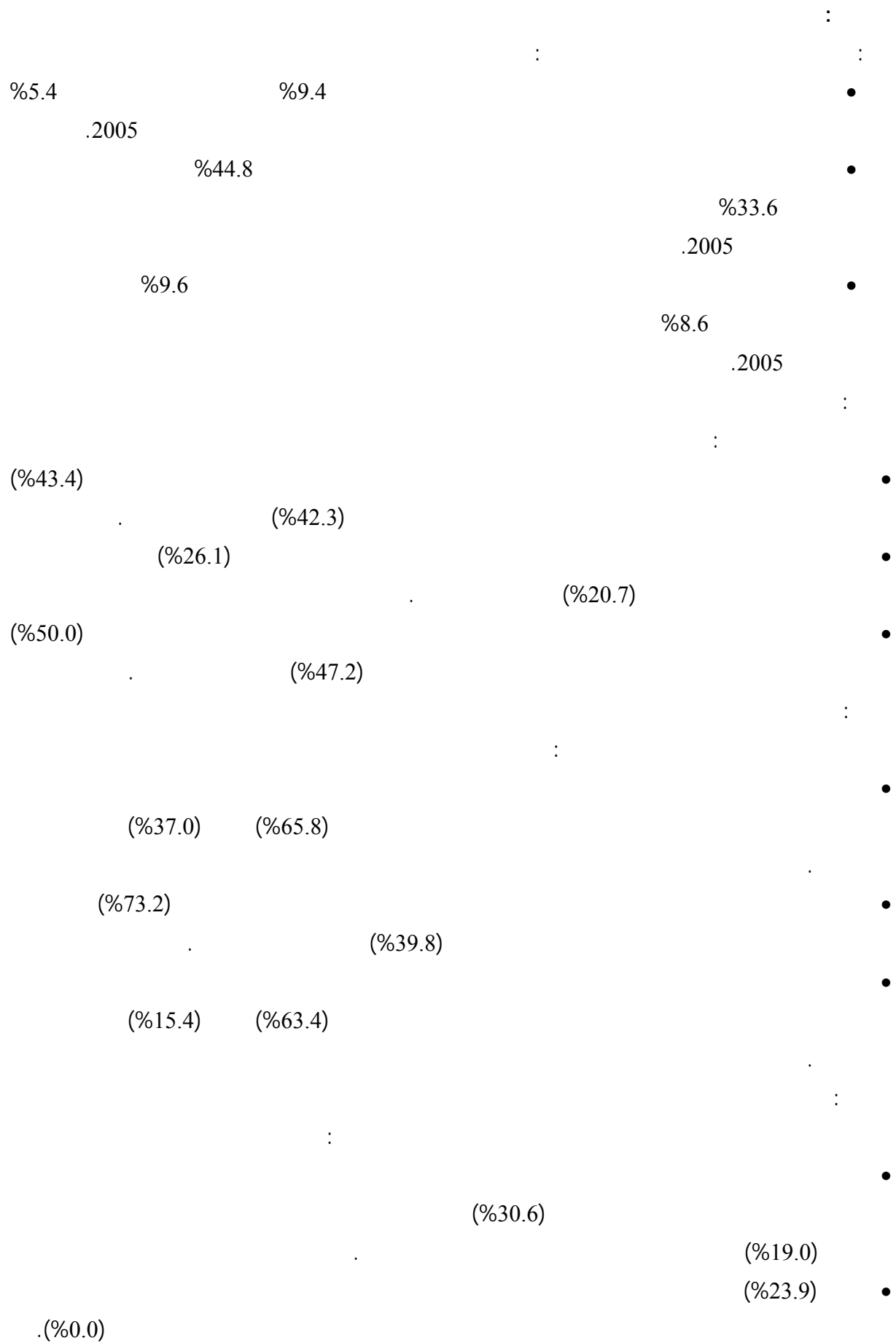
:( )  
 %37.0 %65.8  
 ( ) /  
 %29.3 %65.8  
 %37.0 %4.9  
 %21.0  
 %42.0  
 %26.1  
 %4.9  
 %69.0  
 /  
 %29.3 %63.4  
 %80.4 %4.2 %15.4  
 %47.2  
 %39.8)  
 %14.6 %21.0) %19.6 ( %73.2  
 %39.2) %33.2 ( %12.2  
 .( %28.0  
 /  
 %11.8  
 %8.6 %9.7  
 %5.4  
 %31.1 %3.2  
 %19.0 %30.6

%23.9

( ) - (2005):







(%19.0)

•

(%6.9)

.

**Table 1: Expectations of Owners/ Managers of the Industrial Establishments about the Main Indicators in Remaining West Bank and Gaza Strip**

Indicator	* July 2005 %		* June 2005 %		*May 2005 %		*April 2005 %		*January 2005 %	
	Next six Months	August	Next six Months	July	Next six Months	June	Next six Months	May	Next six Months	February
Percentage of who are expecting better Establishment situation	43.6	42.3	52.8	44.2	53.9	40.8	60.4	46.2	77.2	46.7
Percentage of who are expecting higher employment level	26.1	20.7	27.4	24.9	27.2	21.4	34.0	24.9	59.8	37.5
Percentage of who are expecting higher sales volume	47.2	50.0	56.7	49.5	61.8	47.6	63.5	48.2	77.7	45.6

\*Data collection for January took place during 4/2/2005-6/3/2005.

.2005/3/6-2005/2/4

\*

\*Data collection for April took place during 2-23/5/2005.

.2005/5/23-2

\*

\*Data collection for May took place during 2-23/6/2005.

.2005/6/23-2

\*

\*Data collection for June took place during 2-23/7/2005.

.2005/7/23-2

\*

\*Data collection for July took place during 2-23/8/2005.

.2005/8/23-2

\*

**Table 2: Expectations of Owners/ Managers of the Industrial Establishments about the Main Indicators in Remaining West Bank**

Indicator	* July 2005 %		*June 2005 %		*May 2005 %		*April 2005 %		*January 2005 %	
	Next six Months	August	Next six Months	July	Next six Months	June	Next six Months	May	Next six Months	February
Percentage of who are expecting better Establishment situation	37.0	41.3	49.9	45.0	59.1	42.2	59.8	43.5	74.5	46.0
Percentage of who are expecting higher employment level	15.4	14.7	18.8	18.1	15.0	13.0	26.0	17.5	42.7	33.8
Percentage of who are expecting higher sales volume	39.8	50.3	55.6	54.1	57.8	46.3	63.0	46.1	73.0	41.9

\*Data collection for January took place during 4/2/2005-6/3/2005.

.2005/3/6-2005/2/4

\*

\*Data collection for April took place during 2-23/5/2005.

.2005/5/23-2

\*

\*Data collection for May took place during 2-23/6/2005.

.2005/6/23-2

\*

\*Data collection for June took place during 2-23/7/2005.

.2005/7/23-2

\*

\*Data collection for July took place during 2-23/8/2005.

.2005/8/23-2

\*

**Table 3: Expectations of Owners/ Managers of the Industrial Establishments about the Main Indicators in Gaza Strip**

Indicator	* August 2005 %		*June 2005 %		*May 2005 %		*April 2005 %		*January 2005 %	
	Next six Months	August	Next six Months	July	Next six Months	June	Next six Months	May	Next six Months	February
Percentage of who are expecting better Establishment situation	65.8	46.3	64.3	40.4	59.1	36.4	62.8	55.8	88.9	50.0
Percentage of who are expecting higher employment level	63.4	41.5	62.8	52.5	68.2	50.0	62.8	51.1	88.9	42.8
Percentage of who are expecting higher sales volume	73.2	48.8	60.8	30.3	75.0	52.2	65.1	55.8	97.2	61.1

\*Data collection for January took place during 4/2/2005-6/3/2005.

.2005/3/6-2005/2/4

\*

\*Data collection for April took place during 2-23/5/2005.

.2005/5/23-2

\*

\*Data collection for May took place during 2-23/6/2005.

.2005/6/23-2

\*

\*Data collection for June took place during 2-23/7/2005.

.2005/7/23-2

\*

\*Data collection for July took place during 2-23/8/2005.

.2005/8/23-2

\*

2005

/

:4

2005

**Table4: Percentage Distribution of Owners/Managers of the Industrial Establishments According to their Opinions about Establishments Production During July 2005 Compared with June 2005 by Region**

Attitude	Gaza Strip		Remaining West Bank		Remaining West Bank and Gaza Strip	
	%		%		%	
A lot better	0.0		5.6		4.3	
Somewhat better	36.6		39.9		39.1	
About the same/ Unchanged	56.1		27.3		33.7	
Somewhat worse	7.3		25.2		21.2	
A lot worse	0.0		2.0		1.7	
<b>Total</b>	<b>100</b>		<b>100</b>		<b>100</b>	

2005

/

:5

**Table 5: Percentage Distribution of Owners/Managers of the Industrial Establishments According to their Expectation about Establishments Production in August 2005 and Next Six Months by Region**

Attitude	Time Period and Region					
	Gaza Strip		Remaining West Bank		Remaining West Bank and Gaza Strip	
	Next Six Months %	August %	Next Six Months %	August %	Next Six Months %	August %
A lot better	9.8	0.0	2.7	0.7	4.3	0.5
Somewhat better	56.0	46.3	34.3	40.6	39.1	41.8
About the same/ Unchanged	29.3	48.8	42.0	39.2	39.3	41.3
Somewhat worse	4.9	4.9	20.3	18.8	16.8	15.9
A lot worse	0.0	0.0	0.7	0.7	0.5	0.5
<b>Total</b>	<b>100</b>	<b>100</b>	<b>100</b>	<b>100</b>	<b>100</b>	<b>100</b>

**Table 6: Distribution of Owners/Managers of the Industrial Establishments According to their Views about the Problems Faced the Establishment During July And August 2005 in Remaining West Bank and Gaza Strip**

Problem	Time period and Opinion									
	A lot worse		Somewhat worse		/		Somewhat better		A lot better	
					About the same/ Unchanged					
	August %	July %	August %	July %	August %	July %	August %	July %	August %	July %
Business did not suffer	0.0	0.0	2.7	7.1	56.5	50.5	32.6	37.0	8.2	5.4
Difficulties in obtaining needed raw materials or inputs	0.0	0.0	3.3	5.5	73.2	73.8	16.9	16.9	6.6	3.8
Problems of employees reaching place of work	0.0	2.2	2.2	2.2	78.3	73.8	4.8	12.0	14.7	12.0
Unable to open/operate/work	0.0	0.0	1.1	2.8	79.9	75.5	4.3	8.7	14.7	13.0
Difficulties in transporting finished goods to market	1.2	1.1	7.1	10.3	70.1	67.9	16.3	20.1	5.4	0.5
Financial problems or unable to obtain bank loans	1.1	1.1	3.3	3.8	77.2	78.3	10.8	13.5	7.6	3.3

**Table 7: Distribution of Owners/Managers of the Industrial Establishments According to their Views about the Problems Faced the Establishment During July And August 2005 in Remaining West Bank**

Problem	Time period and Opinion									
	A lot worse		Somewhat worse		/		Somewhat better		A lot better	
	August	July	August	July	August	July	August	July	August	July
	%	%	%	%	%	%	%	%	%	%
Business did not suffer	0.0	0.0	2.8	8.4	60.1	49.6	30.8	35.0	6.3	7.0
Difficulties in obtaining needed raw materials or inputs	0.0	0.0	4.2	6.3	81.7	79.6	9.9	9.9	4.2	4.2
Problems of employees reaching place of work	0.0	0.0	2.8	2.1	88.8	87.4	4.2	6.3	4.2	4.2
Unable to open/operate/work	0.0	0.0	1.4	2.8	90.9	89.5	3.5	3.5	4.2	4.2
Difficulties in transporting finished goods to market	1.4	1.4	9.1	12.6	77.6	75.5	11.9	10.5	0.0	0.0
Financial problems or unable to obtain bank loans	1.4	1.4	4.2	4.2	86.0	86.0	4.2	4.2	4.2	4.2



**Table 8: Distribution of Owners/Managers of the Industrial Establishments According to their Views about the Problems Faced the Establishment During July And August 2005 in Gaza Strip**

Problem	Time period and Opinion									
	A lot worse		Somewhat worse		/		Somewhat better		A lot better	
					About the same/ Unchanged					
	August %	July %	August %	July %	August %	July %	August %	July %	August %	July %
Business did not suffer	0.0	0.0	2.4	2.4	44.0	53.7	39.0	43.9	14.6	0.0
Difficulties in obtaining needed raw materials or inputs	0.0	0.0	0.0	2.4	43.9	53.7	41.5	41.5	14.6	2.4
Problems of employees reaching place of work	0.0	0.0	0.0	2.4	41.5	26.8	7.3	31.8	51.2	39.0
Unable to open/operate/work	0.0	0.0	0.0	2.4	41.5	26.8	7.3	26.8	51.2	44.0
Difficulties in transporting finished goods to market	0.0	0.0	0.0	2.4	43.9	41.5	31.7	53.7	24.4	2.4
Financial problems or unable to obtain bank loans	0.0	0.0	0.0	2.5	46.4	51.2	34.1	46.3	19.5	0.0

**Table 9: Percentage Distribution of Owners/Managers of the Industrial Establishments According to their Expectation about Level of Employment in the Establishments in the Future by Region**

Level of employment	Time Period and Region					
	Gaza Strip		Remaining West Bank		Remaining West Bank and Gaza Strip	
	Next Six Months %	August %	Next Six Months %	August %	Next Six Months %	August %
Significantly higher	12.2	0.0	1.4	0.0	3.8	0.0
Somewhat higher	51.2	41.5	14.0	14.7	22.3	20.7
About the same	29.3	48.7	80.4	79.0	69.0	72.3
Somewhat less	7.3	9.8	4.2	6.3	4.9	7.0
Significantly less	0.0	0.0	0.0	0.0	0.0	0.0
<b>Total</b>	<b>100</b>	<b>100</b>	<b>100</b>	<b>100</b>	<b>100</b>	<b>100</b>

**Table 10: Percentage Distribution of Owners/Managers of the Industrial Establishments According to their Expectation about Value of Sales in the Establishments in the Future by Region**

Value of sales	Time Period and Region					
	Gaza Strip		Remaining West Bank		Remaining West Bank and Gaza Strip	
	Next Six Months %	August %	Next Six Months %	August %	Next Six Months %	August %
Significantly higher	9.8	0.0	2.8	2.0	4.3	1.6
Somewhat higher	63.4	48.8	37.0	48.3	42.9	48.4
About the same	12.2	36.6	39.2	31.5	33.2	32.6
Somewhat less	14.6	14.6	18.2	16.8	17.4	16.3
Significantly less	0.0	0.0	2.8	1.4	2.2	1.1
<b>Total</b>	<b>100</b>	<b>100</b>	<b>100</b>	<b>100</b>	<b>100</b>	<b>100</b>

**Table 11: Percentage Distribution of Owners/Managers of the Industrial Establishments According to their Expectation about the Expected Sales Level Stability or Decline by Region**

<b>Reason</b>	<b>Gaza Strip %</b>	<b>Remaining West Bank %</b>	<b>Remaining West Bank and Gaza Strip %</b>	
Decrease in Demand	0.0	4.2	3.2	
Lack of credit/finance	4.8	1.4	2.2	
Difficulties in Exporting Finished goods	19.0	6.9	9.7	
Difficulties in obtaining needed raw materials or inputs	23.9	0.0	5.4	
Employees unable reaching place of work	0.0	0.0	0.0	
Decline in the Consumer Purchasing Power	19.0	30.6	28.0	
Obstacles in Marketing	9.5	12.5	11.8	
Competitive Goods	9.5	8.3	8.6	
Other	14.3	36.1	31.1	
<b>Total</b>	<b>100</b>	<b>100</b>	<b>100</b>	