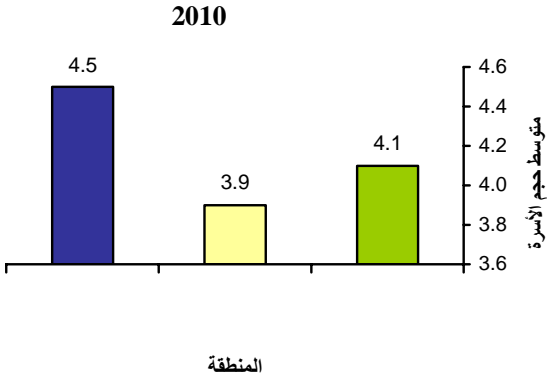


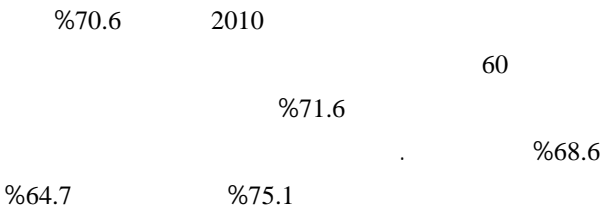
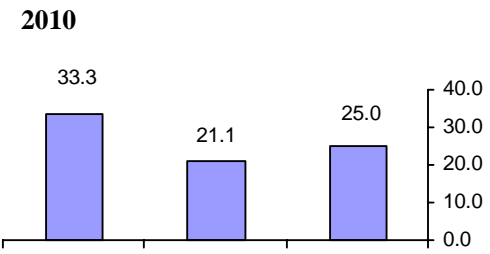
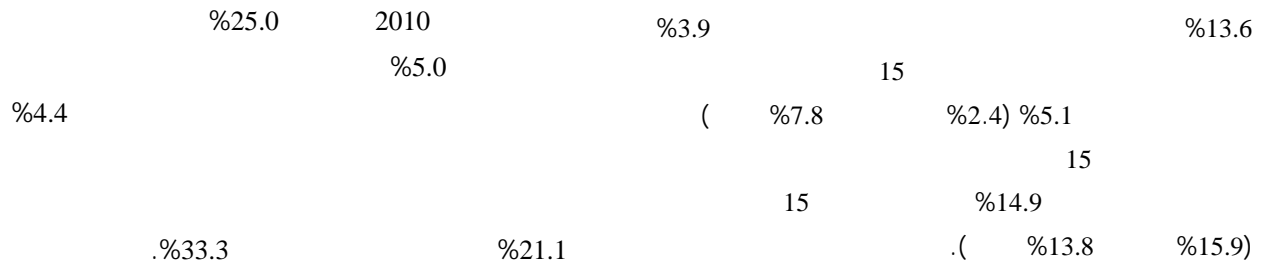
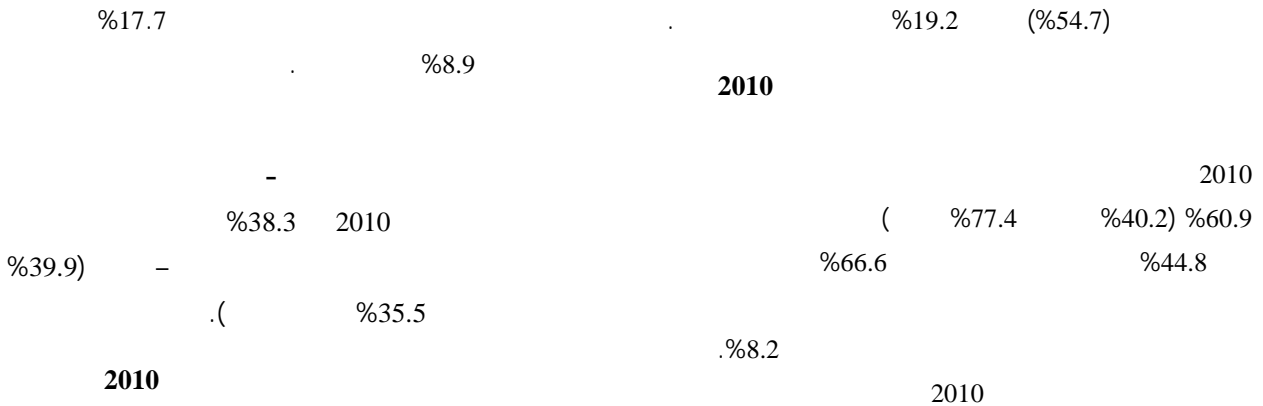


2011

2010	(60)	2011	%4.4
%16.3	%10.6) %12	.	
%16.4)	%15.2		
.	%13.1		
4.1	6.3	1992	7-4
2010		2011	67.0
3.9	4.5	2015	73.9
			71.0
			75.0



(60)	2011	%4.4
%4.8)	(%3.7	
%90.8	2010	%6.0
%42.8		%4.5
%49.7		
%8.4		
.2010		
2011	%14.0	.2020
%6.5	%17.5	60
		79.7
%11.2	%3.5	%5.0
%5.6		%3.8
.%0.7		100



(970/972) 02-2982700:
 (970/972) 02- 2982710 :
 1800300300 :
 diwan@pcbs.gov.ps :

11
 %15 2010
 %2.7 %30.3