

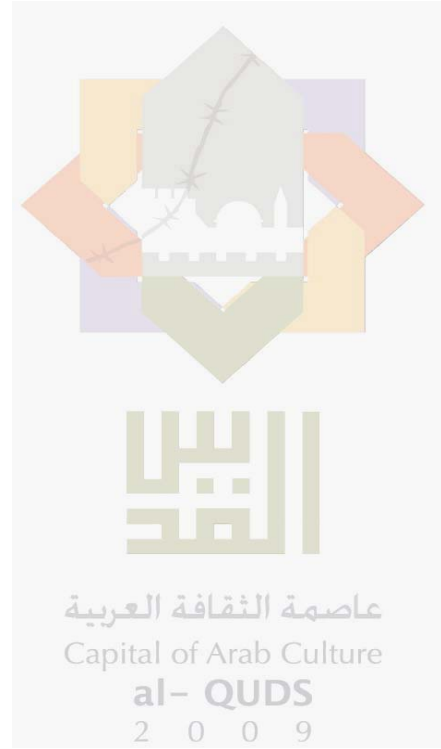
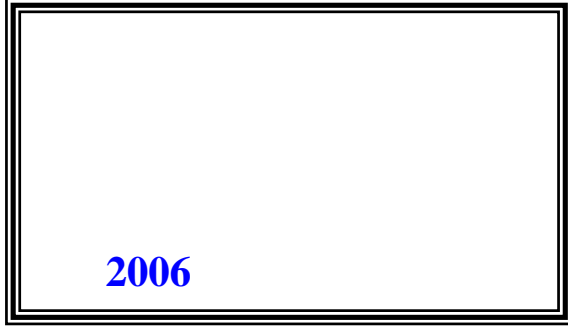


2009

/

2009

/



© 1430 - 2009.

:

/

2009.

2009

:

/

1647 . . -

: 2 242 6340 (970/972)

: 2 242 6343 (970/972)

: diwan@pcbs.gov.ps

: <http://www.pcbs.gov.ps>

5

/

2009

9

2009

47

2009/02/23-03

2009

55

358

2007
%70

.2007

2008

2009

%17.4

2008

2009

2008

%16.7

2009

%0.0

%10.7

2009

:

/

%0.0

2008

2009

/

%77.8

/

%14.4

:

/

%0.0

%85.2

2009

/

%14.7

:

/

%0.0

2009

% 92.6

/

%2.5

:

/

%0.0 (%3.5)

%66.7

2009

: / %34.9
 2009 / %100
 .2009
 : / %90.9
 %60.1 .(%85.2 %91.4)
 %58.4) /
 %25.2) %24.3 (%82.6
 %16.4) %15.6 (%13.1
 .(%4.3
 : / %15.8
 %77.6 (%74.1 %10.9) 2009
 .(%25.9 %81.9)
 - /
 / %33.4 -(2009)
 .(%85.1 %29.1)
 /
 .(%88.8 %11.0) %17.0 2009
 / %34.8
 .(%96.3 %29.7) 2009
 ()
 %62.3
 (%85.2 %60.5)
 %88.9 %31.6) %36.0
 / %62.9 (

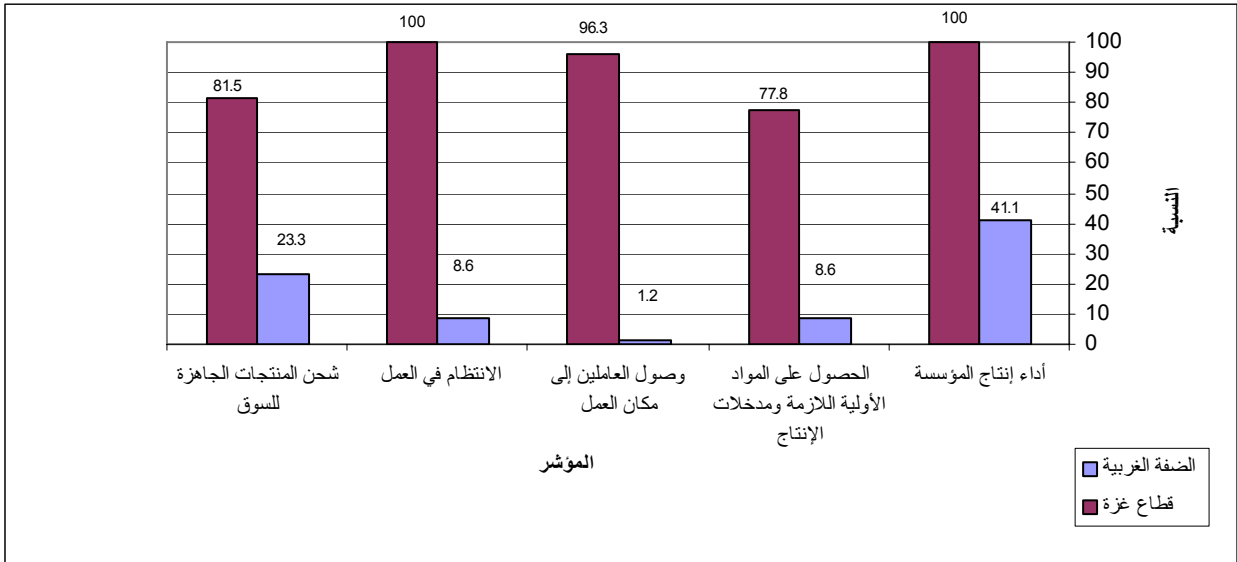
%60.2)

.(%96.3

2009

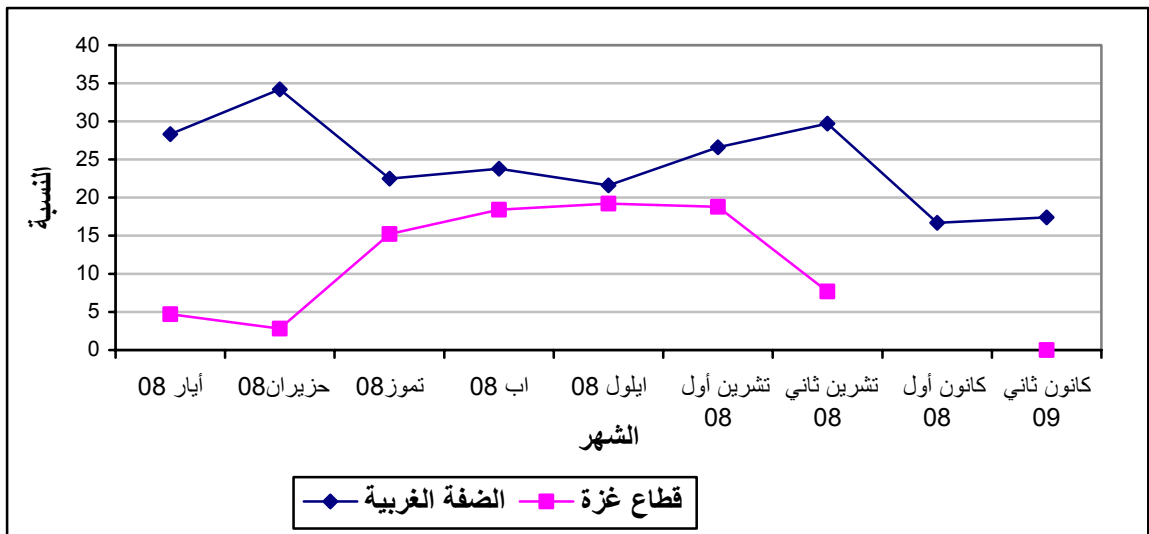
2009

:1



(2009)

:2



.2008

*

Tables

:1-1

2009

Table 1-1: Percentage of the Industrial Enterprises Witnessed an Improved Situation During the Reference Month Compared to that before the Reference Month for the Main Indicators in the Palestinian Territory 2009

Indicator	Reference Month									
	2009	2008								
	كانون ثاني Jan.	كانون أول Dec.	تشرين ثاني Nov.	تشرين أول Oct.	Sept.	Aug.	July	June	May	April
Enterprise performance in general	16.1	-	25.0	24.8	21.0	22.2	20.9	27.4	23.7	-
Obtaining needed raw materials and inputs	9.9	-	10.6	12.2	10.5	12.4	10.6	29.8	27.9	-
Reaching the employees for their work place	4.0	-	3.5	6.1	3.6	3.9	3.9	26.2	25.2	-
Regularity of work	5.7	-	6.8	9.8	7.3	7.8	4.2	12.4	9.4	-
Transporting finished goods to market	7.1	-	9.2	8.5	7.1	8.3	11.4	4.5	4.6	-

(-) No Data Available

(-)

:2-1

2009

Table 1-2: Percentage of Industrial Enterprises Witnessed an Improved Situation During the Reference Month Compared to that before the Reference Month for the Main Indicators in the West Bank 2009

Indicator	Reference Month									
	2009	2008								
	كانون ثاني Jan.	كانون أول Dec.	تشرين ثاني Nov.	تشرين أول Oct.	Sept.	Aug.	July	June	May	April
Enterprise performance in general	17.4	16.7	29.7	26.6	21.6	23.8	22.5	34.2	28.3	-
Obtaining needed raw materials and inputs	10.7	7.0	11.7	10.6	8.8	10.6	11.1	37.3	33.6	-
Reaching the employees for their work place	4.3	3.1	4.4	6.5	5.0	4.8	3.9	32.6	30.1	-
Regularity of work	6.1	3.5	7.2	8.9	6.4	5.2	3.2	15.4	10.9	-
Transporting finished goods to market	7.7	5.4	11.4	8.2	8.2	10.3	13.6	5.4	5.3	-

(-) No Data Available

(-)

2009

Table 1-3: Percentage of Industrial Enterprises Witnessed an Improved Situation During the Reference Month Compared to that before the Reference Month for the Main Indicators in Gaza Strip 2009

Indicator	Reference Month									
	2009	2008								
	كانون ثاني Jan.	كانون أول Dec.	تشرين ثاني Nov.	تشرين أول Oct.	Sept.	Aug.	July	June	May	April
Enterprise performance in general	0.0	-	7.7	18.8	19.2	18.4	15.2	2.8	4.7	-
Obtaining needed raw materials and inputs	0.0	-	6.4	17.7	15.1	16.7	8.9	2.8	4.7	-
Reaching the employees for their work place	0.0	-	0.0	4.7	0.0	1.8	3.8	2.8	4.7	-
Regularity of work	0.0	-	5.1	13.0	10.1	14.1	7.6	1.4	3.1	-
Transporting finished goods to market	0.0	-	1.3	9.4	4.0	3.5	3.8	1.4	1.6	-

(-) No Data Available

(-)

2009

/

:1-2

2008

Table 2-1: Percentage Distribution of Owners/ Managers of the Industrial Enterprises According to Their Opinions of Main Indicators During January 2009 Compared to December 2008 in the Palestinian Territory

Problem	Total	Not Exist	Much Worse	Somewhat Worse	/ About the Same/ Unchanged	Somewhat Better	Much Better
Enterprise performance in general	100	0.0	11.0	34.6	38.3	14.4	1.7
Production situation	100	1.1	9.6	37.1	35.2	15.6	1.4
Employees productivity	100	1.4	7.9	25.8	51.6	12.2	1.1
Obtaining needed raw materials and inputs	100	1.4	5.9	7.9	74.9	9.3	0.6
Reaching the employees for their work place	100	0.3	7.4	1.1	87.2	4.0	0.0
Regularity of work	100	0.3	8.2	7.4	78.4	5.7	0.0
Transporting finished goods to market	100	2.0	7.1	20.7	63.1	6.5	0.6
Financial situations	100	0.0	9.9	33.1	43.4	13.0	0.6
Banks credits & facilities	100	27.8	5.4	2.0	62.5	2.0	0.3
Level of employment	100	0.3	7.4	12.7	70.5	9.1	0.0
Value of sales	100	0.3	10.5	39.4	32.6	16.1	1.1

2008

Table 2-2: Percentage Distribution of Owners/ Managers of the Industrial Enterprises According to Their Opinions of Main Indicators During January 2009 Compared to December 2008 in the West Bank

Problem	Total	Not Exist	Much Worse	Somewhat Worse	/ About the Same/ Unchanged	Somewhat Better	Much Better
Enterprise performance in general	100	0.0	4.3	36.8	41.5	15.6	1.8
Production situation	100	0.0	4.0	39.6	38.0	16.9	1.5
Employees productivity	100	0.3	2.1	27.3	55.9	13.2	1.2
Obtaining needed raw materials and inputs	100	0.3	0.3	8.3	80.4	10.1	0.6
Reaching the employees for their work place	100	0.3	0.3	0.9	94.2	4.3	0.0
Regularity of work	100	0.3	0.9	7.7	85.0	6.1	0.0
Transporting finished goods to market	100	0.6	1.5	21.8	68.4	7.1	0.6
Financial situations	100	0.0	4.9	34.0	46.4	14.1	0.6
Banks credits & facilities	100	29.2	0.6	1.8	65.9	2.2	0.3
Level of employment	100	0.0	0.9	13.8	75.5	9.8	0.0
Value of sales	100	0.0	4.3	41.7	35.3	17.5	1.2

2008

Table 2-2: Percentage Distribution of Owners/ Managers of the Industrial Enterprises According to Their Opinions of Main Indicators During January 2009 Compared to December 2008 in Gaza Strip

Problem	Total	Not Exist	Much Worse	Somewhat Worse	/ About the Same/ Unchanged	Somewhat Better	Much Better
Enterprise performance in general	100	0.0	92.6	7.4	0.0	0.0	0.0
Production situation	100	14.8	77.8	7.4	0.0	0.0	0.0
Employees productivity	100	14.8	77.8	7.4	0.0	0.0	0.0
Obtaining needed raw materials and inputs	100	14.8	74.1	3.7	7.4	0.0	0.0
Reaching the employees for their work place	100	0.0	92.6	3.7	3.7	0.0	0.0
Regularity of work	100	0.0	96.3	3.7	0.0	0.0	0.0
Transporting finished goods to market	100	18.5	74.1	7.4	0.0	0.0	0.0
Financial situations	100	0.0	70.4	22.2	7.4	0.0	0.0
Banks credits & facilities	100	11.1	63.0	3.7	22.2	0.0	0.0
Level of employment	100	3.7	85.2	0.0	11.1	0.0	0.0
Value of sales	100	3.7	85.2	11.1	0.0	0.0	0.0

Table 3: Percentage of Industrial Enterprises Witnessed an Improved Situation During the Reference Month (January 2009) Compared to that before the Reference Month for the Main Indicators by Region

Indicator	Gaza Strip	West Bank	Palestinian Territory
Employees productivity	0.0	14.4	13.3
Financial situations	0.0	14.7	13.6
Banks credits & facilities	0.0	2.5	2.3
Level of employment	0.0	9.8	9.1
Value of sales	0.0	18.7	17.2

/ :4

2009

Table 4: Percentage Distribution of Owners/Managers of the Active Industrial Enterprises According to the Reasons for Sales Level Stability or Decline by Region During January 2009

Reason	Gaza Strip	West Bank	Palestinian Territory
Decrease in demand	0.0	15.8	13.4
Difficulties in exporting finished goods	0.0	1.4	1.2
Decline in the consumer purchasing power	0.0	21.9	18.6
Product Marketing Obstacles	0.0	0.7	0.6
Competence product	0.0	8.2	7.0
Seasonally related	0.0	15.1	12.8
Military check points/ israeli actions/ closures	100.0	34.9	44.8
Other	0.0	2.0	1.6
Total	100	100	100

2009

:5

Table 5: Percentage Distribution of the Active Industrial Enterprises According to the Employment Mobility During January 2009 by Region

Employment Mobility	Gaza Strip	West Bank	Palestinian Territory	
Hiring employees	0.0	7.2	6.6	
Firing employees	74.1	10.9	15.8	
No change	25.9	81.9	77.6	
Total	100	100	100	

2009

/

:6

Table 6: Percentage Distribution of the Existing of Competition against the Main Product According to the Owners\ Managers of the Active Industrial Enterprises During January 2009 by Region

Competence existence	Gaza Strip	West Bank	Palestinian Territory	
There is competition	85.2	91.4	90.9	
There is no competition	14.8	8.6	9.1	
Total	100	100	100	

2009

/

:7

Table 7: Percentage Distribution of the Type of Competition According to the Owners\ Managers of the Active Industrial Enterprises During January 2009 by Region

Type of competence	Gaza Strip	West Bank	Palestinian Territory	
Local	82.6	58.4	60.1	
Foreign	13.1	25.2	24.3	
Both	4.3	16.4	15.6	
Total	100	100	100	

Table 8: Expectations of Owners/ Managers of the Active Industrial Enterprises for the Month that Follows the Reference Month Compared to the Reference Month (January, 2009) for the Main Indicators by Region

Indicator	Reference Month									
	2009	2008								
	كانون ثاني Jan.	كانون أول Dec.	تشرين ثاني Nov.	تشرين أول Oct.	Sept.	Aug.	July	June	May	April
Percentage of who are expecting better Enterprise situation										
Palestinian Territory	33.4	-	27.5	32.0	33.0	28.0	30.3	32.5	32.8	-
West Bank	29.1	26.5	27.3	30.7	29.8	21.6	26.3	29.6	29.4	36.0
Gaza Strip	85.1	-	28.9	39.2	46.8	58.9	53.2	54.3	46.9	-
Percentage of who are expecting higher employment level										
Palestinian Territory	17.0	-	12.0	10.0	16.1	15.6	10.1	11.9	15.2	-
West Bank	11.0	11.2	9.7	6.1	10.3	8.5	3.7	6.2	8.0	10.3
Gaza Strip	88.8	-	28.9	31.4	40.3	50.0	46.8	54.3	45.4	-
Percentage of who are expecting higher sales volume										
Palestinian Territory	34.8	-	27.5	30.9	33.9	28.6	28.7	32.0	33.2	-
West Bank	29.7	28.1	27.3	29.4	30.9	22.3	24.5	29.0	29.9	38.9
Gaza Strip	96.3	-	28.9	39.2	46.8	58.9	53.2	54.3	46.9	-

(-) No Data Available

(-)

Table 9: Expectations of Owners/ Managers of the Active Industrial Enterprises for the Six Months that Follow the Reference Month Compared to the Reference Month (January, 2009) for the Main Indicators by Region

Indicator	Reference Month									
	2009	2008								
	كانون ثاني Jan.	كانون أول Dec.	تشرين ثاني Nov.	تشرين أول Oct.	Sept.	Aug.	July	June	May	April
Percentage of who are expecting better Enterprise situation										
Palestinian Territory	62.3	-	44.9	41.2	38.8	39.9	34.5	35.7	41.6	-
West Bank	60.5	50.2	44.6	39.3	35.0	35.7	30.4	32.9	38.5	49.4
Gaza Strip	85.2	-	47.4	51.0	54.8	60.7	58.7	57.1	54.7	-
Percentage of who are expecting higher employment level										
Palestinian Territory	36.0	-	20.9	17.4	21.6	19.2	15.1	15.4	22.3	-
West Bank	31.6	18.9	18.0	12.7	14.8	12.9	8.5	9.7	14.8	15.8
Gaza Strip	88.9	-	42.1	43.2	50.0	50.0	54.4	57.1	53.1	-
Percentage of who are expecting higher sales volume										
Palestinian Territory	62.9	-	45.6	41.1	42.5	40.9	35.1	36.6	43.9	-
West Bank	60.2	52.7	45.3	39.3	39.5	36.8	31.1	34.1	41.3	53.8
Gaza Strip	96.3	-	47.4	51.0	54.8	60.7	58.7	55.9	54.7	-

(-) No Data Available

(-)

Table 10: Expectations of Owners/ Managers of the Active Industrial Enterprises about Better Expectations for their Enterprises for the Month that Follows the Reference Month (January, 2009) Compared to the Reference Month by Region

Indicator	Gaza Strip	West Bank	Palestinian Territory	
Enterprise performance in general	100.0	28.5	34.0	
Employees productivity	85.1	21.5	26.3	
Obtaining needed raw materials and inputs	74.1	7.7	12.8	
Reaching the employees for their work place	100.0	3.4	10.8	
Regularity of work	88.8	8.3	14.4	
Transporting finished goods to market	88.8	10.4	16.4	
Financial situations	96.3	23.6	29.1	
Banks credits & facilities	66.6	2.4	7.3	

(-) No Data Available

(-)

Table 11: Expectations of Owners/ Managers of the Active Industrial Enterprises about Better Expectations for their Enterprises for the Six Months that Follow the Reference Month (January, 2009) Compared to the Reference Month for the Main Indicators by Region

Indicator	Gaza Strip	West Bank	Palestinian Territory	
Enterprise performance in general	100.0	58.0	61.2	
Employees productivity	85.2	44.4	47.5	
Obtaining needed raw materials and inputs	81.4	15.9	20.9	
Reaching the employees for their work place	100.0	11.1	17.9	
Regularity of work	88.9	23.3	28.3	
Transporting finished goods to market	88.9	22.4	27.5	
Financial situations	100.0	45.4	49.6	
Banks credits & facilities	66.6	8.3	12.7	

(-) No Data Available

(-)

(2009)

/

:1-12

Table 12-1: Percentage Distribution of Owners/ Managers of the Active Industrial Enterprises According to Their Opinions of Main Indicators for the Month that Follows the Reference Month (January, 2009) Compared to the Reference Month in the Palestinian Territory

Indicator	Total	Not Exist	Much Worse	Somewhat Worse	/ About the Same/ Unchanged	Somewhat Better	Much Better	
Enterprise performance in general	100	0.0	0.3	17.3	48.4	30.0	4.0	
Production situation	100	1.1	0.3	17.8	47.4	30.0	3.4	
Volume of sales	100	0.3	0.3	18.4	46.2	31.4	3.4	
Employees productivity	100	1.4	0.3	11.3	60.7	23.5	2.8	
Obtaining needed raw materials and inputs	100	1.4	0.3	4.5	81.0	10.8	2.0	
Reaching the employees for their work place	100	0.3	0.0	1.1	87.8	5.7	5.1	
Regularity of work	100	0.0	0.8	4.8	80.0	11.3	3.1	
Level of employment	100	0.3	0.3	4.5	77.9	13.6	3.4	
Transporting finished goods to market	100	1.7	0.8	7.1	74.0	13.0	3.4	
Financial situations	100	0.0	0.8	14.4	55.7	26.3	2.8	
Banks credits & facilities	100	28.3	0.0	2.0	62.4	4.8	2.5	

Table 12-2: Percentage Distribution of Owners/ Managers of the Active Industrial Enterprises According to Their Opinions of Main Indicators for the Month that Follows the Reference Month (January, 2009) Compared to the Reference Month in the West Bank

Indicator	Total	Not Exist	Much Worse	Somewhat Worse	/ About the Same/ Unchanged	Somewhat Better	Much Better	
Enterprise performance in general	100	0.0	0.3	18.7	52.5	27.9	0.6	
Production situation	100	0.0	0.3	19.3	51.3	28.5	0.6	
Volume of sales	100	0.0	0.3	19.9	50.1	29.4	0.3	
Employees productivity	100	0.3	0.3	12.3	65.6	21.5	0.0	
Obtaining needed raw materials and inputs	100	0.3	0.3	4.9	86.8	7.7	0.0	
Reaching the employees for their work place	100	0.3	0.0	1.2	95.1	3.4	0.0	
Regularity of work	100	0.0	0.9	5.2	85.6	8.3	0.0	
Level of employment	100	0.3	0.3	4.9	83.5	10.7	0.3	
Transporting finished goods to market	100	0.9	0.9	7.7	80.0	10.4	0.0	
Financial situations	100	0.0	0.9	15.6	59.9	23.3	0.3	
Banks credits & facilities	100	29.8	0.0	2.1	65.7	2.1	0.3	

Table 12-3: Percentage Distribution of Owners/ Managers of the Active Industrial Enterprises According to Their Opinions of Main Indicators for the Month that Follows the Reference Month (January, 2009) Compared to the Reference Month in Gaza Strip

Indicator	Total	Not Exist	Much Worse	Somewhat Worse	/ About the Same/ Unchanged	Somewhat Better	Much Better	
Enterprise performance in general	100	0.0	0.0	0.0	0.0	55.6	44.4	
Production situation	100	14.9	0.0	0.0	0.0	48.1	37.0	
Volume of sales	100	3.7	0.0	0.0	0.0	55.6	40.7	
Employees productivity	100	14.9	0.0	0.0	0.0	48.1	37.0	
Obtaining needed raw materials and inputs	100	14.9	0.0	0.0	11.1	48.1	25.9	
Reaching the employees for their work place	100	0.0	0.0	0.0	0.0	33.3	66.7	
Regularity of work	100	0.0	0.0	0.0	11.2	48.1	40.7	
Level of employment	100	0.0	0.0	0.0	11.2	48.1	40.7	
Transporting finished goods to market	100	11.2	0.0	0.0	0.0	44.4	44.4	
Financial situations	100	0.0	0.0	0.0	3.7	63.0	33.3	
Banks credits & facilities	100	11.2	0.0	0.0	22.2	37.0	29.6	

(2009)

/

:1-13

Table 13-1: Percentage Distribution of Owners/ Managers of the Active Industrial Enterprises According to Their Opinions of Main Indicators During the Next Six Months Compared to Reference Month (January, 2009) in the Palestinian Territory

Indicator	Total	Not Exist	Much Worse	Somewhat Worse	/ About the Same/ Unchanged	Somewhat Better	Much Better	
Enterprise performance in general	100	0.0	0.6	13.6	24.6	54.1	7.1	
Production situation	100	1.1	0.8	13.6	22.2	55.5	6.8	
Volume of sales	100	0.3	0.8	13.6	22.4	55.5	7.4	
Employees productivity	100	1.4	0.6	9.1	41.4	41.6	5.9	
Obtaining needed raw materials and inputs	100	0.8	1.1	4.2	73.0	16.4	4.5	
Reaching the employees for their work place	100	0.3	0.6	0.6	80.6	11.6	6.3	
Regularity of work	100	0.0	1.1	4.5	66.1	23.2	5.1	
Level of employment	100	0.3	0.8	4.8	58.1	30.3	5.7	
Transporting finished goods to market	100	1.7	1.1	6.2	63.5	22.4	5.1	
Financial situations	100	0.0	1.1	11.3	38.0	43.1	6.5	
Banks credits & facilities	100	28.3	0.0	1.1	57.9	9.3	3.4	

Table 13-2: Percentage Distribution of Owners/ Managers of the Active Industrial Enterprises According to Their Opinions of Main Indicators During the Next Six Months Compared to Reference Month (January, 2009) in the West Bank

Indicator	Total	Not Exist	Much Worse	Somewhat Worse	/ About the Same/ Unchanged	Somewhat Better	Much Better	
Enterprise performance in general	100	0.0	0.6	14.7	26.7	55.5	2.5	
Production situation	100	0.0	0.9	14.7	23.9	57.7	2.8	
Volume of sales	100	0.0	0.9	14.7	24.2	57.4	2.8	
Employees productivity	100	0.3	0.6	9.8	44.7	42.6	1.8	
Obtaining needed raw materials and inputs	100	0.0	1.2	4.6	78.3	15.0	0.9	
Reaching the employees for their work place	100	0.3	0.6	0.6	87.4	10.5	0.6	
Regularity of work	100	0.0	1.2	4.9	70.6	22.4	0.9	
Level of employment	100	0.3	0.9	5.2	62.0	30.1	1.5	
Transporting finished goods to market	100	0.9	1.2	6.7	68.8	21.5	0.9	
Financial situations	100	0.0	1.2	12.3	41.1	43.6	1.8	
Banks credits & facilities	100	29.8	0.0	1.2	60.7	8.0	0.3	

Table 13-3: Percentage Distribution of Owners/ Managers of the Active Industrial Enterprises According to Their Opinions of Main Indicators During the Next Six Months Compared to Reference Month (January, 2009) in Gaza Strip

Indicator	Total	Not Exist	Much Worse	Somewhat Worse	/ About the Same/ Unchanged	Somewhat Better	Much Better	
Enterprise performance in general	100	0.0	0.0	0.0	0.0	37.0	63.0	
Production situation	100	14.8	0.0	0.0	0.0	29.6	55.6	
Volume of sales	100	3.7	0.0	0.0	0.0	33.3	63.0	
Employees productivity	100	14.8	0.0	0.0	0.0	29.6	55.6	
Obtaining needed raw materials and inputs	100	11.1	0.0	0.0	7.5	33.3	48.1	
Reaching the employees for their work place	100	0.0	0.0	0.0	0.0	25.9	74.1	
Regularity of work	100	0.0	0.0	0.0	11.1	33.3	55.6	
Level of employment	100	0.0	0.0	0.0	11.1	33.3	55.6	
Transporting finished goods to market	100	11.1	0.0	0.0	0.0	33.3	55.6	
Financial situations	100	0.0	0.0	0.0	0.0	37.0	63.0	
Banks credits & facilities	100	11.1	0.0	0.0	22.3	25.9	40.7	