

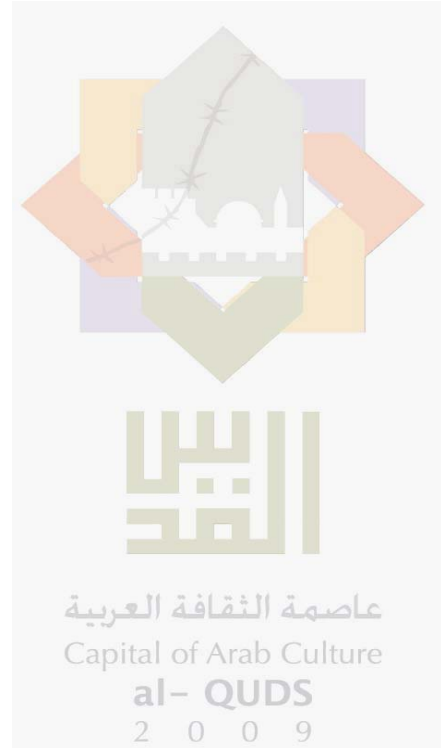
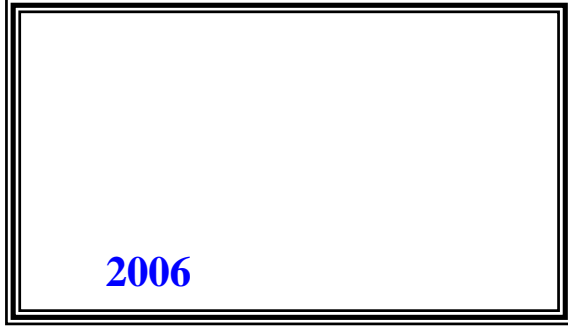


2009

/

2009

/



© 1430 - 2009.

:

/

2009.

2009

:

1647 . . -

: 2 242 6340 (970/972)

: 2 242 6343 (970/972)

: diwan@pcbs.gov.ps

: <http://www.pcbs.gov.ps>

5

/

2009

9

/
2009

/ 53
2009 2009/08/23-03
. 55 358 .
2007
%70

.2007
2009 **2009**
2009 %31.7 2009 2009 :
.(%11.8 %32.7)

/ %22.1 :
%23.2)
.(
/ %1.2 :
%1.2)
.(

:
/ %39.5
%25.3 2009

:
/ %93.3
%56.0 .(%76.5 %94.2)
%54.8 /
%15.3) %15.3 (%84.6
%28.7 (%15.3
.(%29.9)

:
 / %5.2
 %5.5) 2009
 %87.2 (

%86.5)
 .(

.3
1-3

- /
 / %32.3 -(2009)

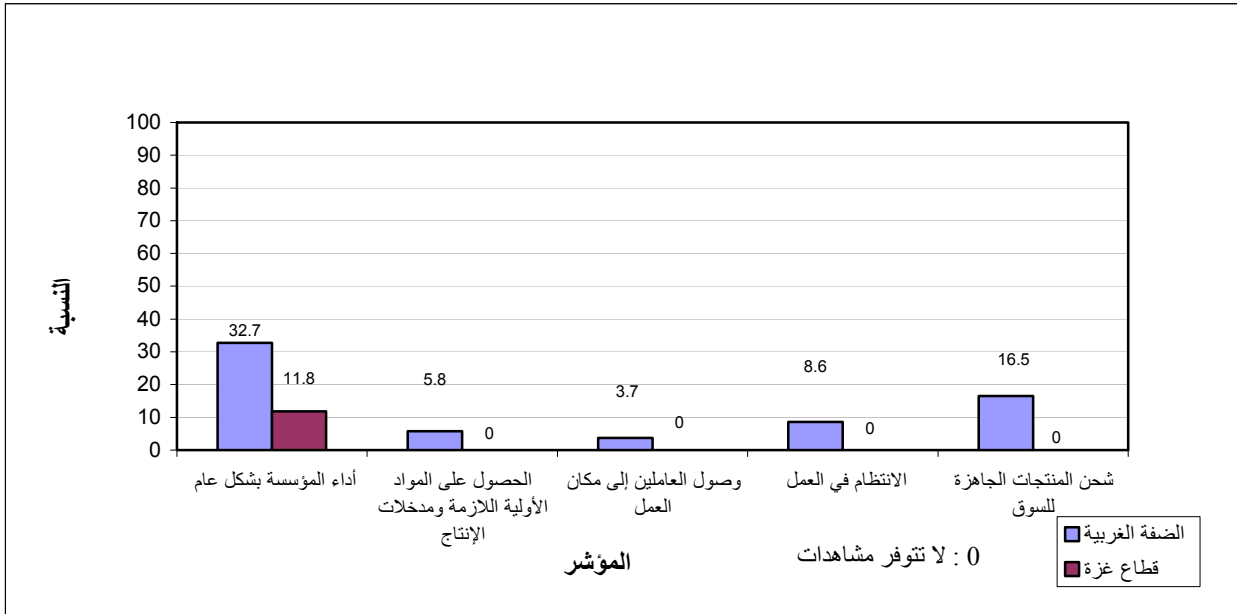
2009 .(%5.9 %33.6 /
 / %12.5 %11.9

%5.9 %34.2 / %32.9 2009
 .(

2-3

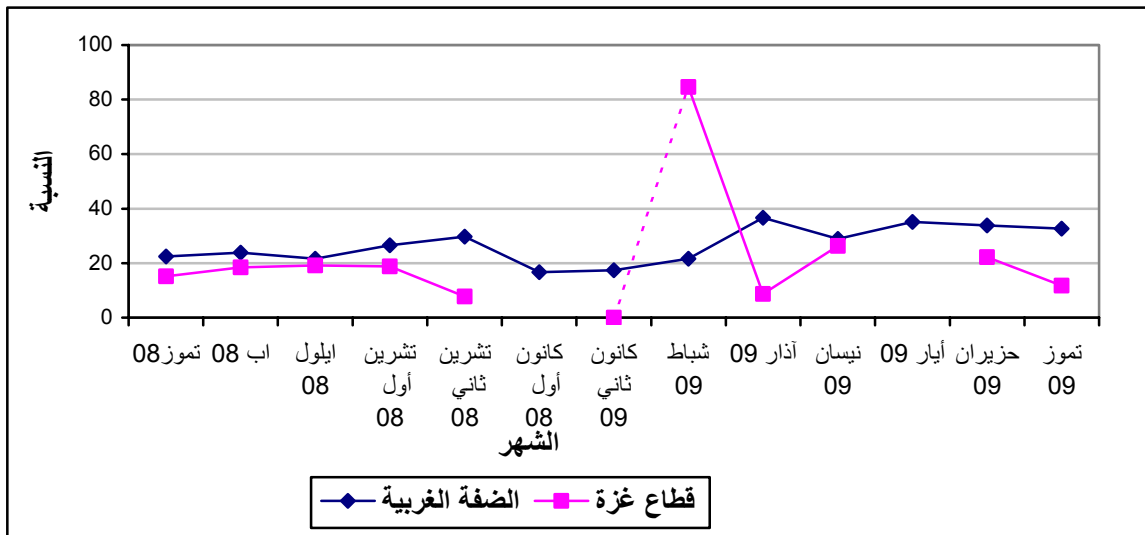
()
 %44.4 .(%5.9 %45.5
 %21.5 %22.6
 .(

/ %44.8
 %46.8 .(%5.9



(2009 - 2008)

:2



*

Tables

:1-1

2009

Table 1-1: Percentage of the Industrial Enterprises Witnessed an Improved Situation During the Reference Month Compared to that before the Reference Month for the Main Indicators in the Palestinian Territory 2009

Indicator	Reference Month									
	2009							2008		
	تموز July.	حزيران Jun.	أيار May.	نيسان Apr.	آذار Mar.	شباط Feb.	كانون ثاني Jan.	كانون أول Dec.	تشرين ثاني Nov.	تشرين أول Oct.
Enterprise performance in general	31.7	33.2	-	28.7	34.7	26.4	16.1	-	25.0	24.8
Obtaining needed raw materials and inputs	5.6	9.6	-	6.9	13.1	8.5	9.9	-	10.6	12.2
Reaching the employees for their work place	3.5	3.0	-	2.1	6.9	9.1	4.0	-	3.5	6.1
Regularity of work	8.2	9.9	-	6.0	10.7	10.0	5.7	-	6.8	9.8
Transporting finished goods to market	15.7	17.0	-	11.2	11.6	11.8	7.1	-	9.2	8.5

(-) No Data Available

(-)

:2-1

2009

Table 1-2: Percentage of Industrial Enterprises Witnessed an Improved Situation During the Reference Month Compared to that before the Reference Month for the Main Indicators in the West Bank 2009

Indicator	Reference Month									
	2009							2008		
	تموز July.	حزيران Jun.	أيار May.	نيسان Apr.	آذار Mar.	شباط Feb.	كانون ثاني Jan.	كانون أول Dec.	تشرين ثاني Nov.	تشرين أول Oct.
Enterprise performance in general	32.7	33.9	35.1	28.9	36.7	21.6	17.4	16.7	29.7	26.6
Obtaining needed raw materials and inputs	5.8	9.8	8.9	6.7	13.5	7.0	10.7	7.0	11.7	10.6
Reaching the employees for their work place	3.7	3.1	2.9	2.2	7.1	3.8	4.3	3.1	4.4	6.5
Regularity of work	8.6	9.4	9.9	5.1	11.5	5.1	6.1	3.5	7.2	8.9
Transporting finished goods to market	16.5	17.7	15.5	11.3	12.1	7.6	7.7	5.4	11.4	8.2

2009

Table 1-3: Percentage of Industrial Enterprises Witnessed an Improved Situation During the Reference Month Compared to that before the Reference Month for the Main Indicators in Gaza Strip 2009

Indicator	Reference Month									
	2009							2008		
	تموز July.	حزيران Jun.	أيار May.	نيسان Apr.	آذار Mar.	شباط Feb.	كانون ثاني Jan.	كانون أول Dec.	تشرين ثاني Nov.	تشرين أول Oct.
Enterprise performance in general	11.8	22.2	-	26.3	8.7	84.6	0.0	-	7.7	18.8
Obtaining needed raw materials and inputs	:	5.6	-	10.6	8.7	26.9	0.0	-	6.4	17.7
Reaching the employees for their work place	:	:	-	:	4.3	73.1	0.0	-	0.0	4.7
Regularity of work	:	16.7	-	21.1	0.0	69.2	0.0	-	5.1	13.0
Transporting finished goods to market	:	5.6	-	10.6	4.3	61.6	0.0	-	1.3	9.4

(-) No Data Available

(-)

(:) No Observations in the Sample

(:)

2009

/

:1-2

2009

Table 2-1: Percentage Distribution of Owners/ Managers of the Industrial Enterprises According to Their Opinions of Main Indicators During July 2009 Compared to June 2009 in the Palestinian Territory

Problem	Total	Not Exist	Much Worse	Somewhat Worse	/ About the Same/ Unchanged	Somewhat Better	Much Better
Enterprise performance in general	100	:	1.5	15.1	51.7	30.2	1.5
Production situation	100	1.5	1.7	19.8	42.7	32.0	2.3
Employees productivity	100	1.5	1.7	16.3	50.5	28.5	1.5
Obtaining needed raw materials and inputs	100	1.2	0.6	4.9	87.7	4.4	1.2
Reaching the employees for their work place	100	0.3	0.3	0.6	95.3	3.2	0.3
Regularity of work	100	:	0.9	7.3	83.6	7.6	0.6
Transporting finished goods to market	100	0.9	1.7	10.5	71.2	14.8	0.9
Financial situations	100	:	2.3	11.9	63.7	21.2	0.9
Banks credits & facilities	100	28.8	0.9	1.2	67.9	0.9	0.3
Level of employment	100	1.2	1.2	7.0	79.8	9.9	0.9
Value of sales	100	0.3	1.7	24.7	39.0	33.4	0.9

(:) No Observations in the Sample

(:)

2009

/

:2-2

2009

Table 2-2: Percentage Distribution of Owners/ Managers of the Industrial Enterprises According to Their Opinions of Main Indicators During July 2009 Compared to June 2009 in the West Bank

Problem	Total	Not Exist	Much Worse	Somewhat Worse	/ About the Same/ Unchanged	Somewhat Better	Much Better
Enterprise performance in general	100	:	1.5	15.6	50.2	31.2	1.5
Production situation	100	:	1.8	20.5	42.0	33.3	2.4
Employees productivity	100	:	1.8	17.1	49.9	29.7	1.5
Obtaining needed raw materials and inputs	100	:	0.6	4.9	88.7	4.6	1.2
Reaching the employees for their work place	100	:	0.3	0.6	95.4	3.4	0.3
Regularity of work	100	:	0.9	7.6	82.9	8.0	0.6
Transporting finished goods to market	100	:	1.8	11.0	70.7	15.6	0.9
Financial situations	100	:	2.4	12.5	61.9	22.3	0.9
Banks credits & facilities	100	26.9	0.9	1.2	69.8	0.9	0.3
Level of employment	100	1.2	1.2	7.3	79.0	10.4	0.9
Value of sales	100	0.3	1.8	26.0	36.1	34.9	0.9

(:) No Observations in the Sample

(:)

2009

Table 2-3: Percentage Distribution of Owners/ Managers of the Industrial Enterprises According to Their Opinions of Main Indicators During July 2009 Compared to June 2009 in Gaza Strip

Problem	Total	Not Exist	Much Worse	Somewhat Worse	/ About the Same/ Unchanged	Somewhat Better	Much Better
Enterprise performance in general	100	:	:	5.9	82.3	11.8	:
Production situation	100	29.4	:	5.9	58.8	5.9	:
Employees productivity	100	29.4	:	:	64.7	5.9	:
Obtaining needed raw materials and inputs	100	23.5	:	5.9	70.6	:	:
Reaching the employees for their work place	100	5.9	:	:	94.1	:	:
Regularity of work	100	:	:	:	100.0	:	:
Transporting finished goods to market	100	17.6	:	:	82.4	:	:
Financial situations	100	:	:	:	100.0	:	:
Banks credits & facilities	100	64.7	:	:	35.3	:	:
Level of employment	100	:	:	:	100.0	:	:
Value of sales	100	:	:	:	94.1	5.9	:

(:) No Observations in the Sample

(:)

Table 3: Percentage of Industrial Enterprises Witnessed an Improved Situation During the Reference Month (July 2009) Compared to that before the Reference Month for the Main Indicators by Region

Indicator	Gaza Strip	West Bank	Palestinian Territory	
Employees productivity	5.9	31.2	30.0	
Financial situations	:	23.2	22.1	
Banks credits & facilities	:	1.2	1.2	
Level of employment	:	11.2	10.8	
Value of sales	:	35.8	34.3	

(:) No Observations in the Sample

(:)

/

:4

2009

Table 4: Percentage Distribution of Owners/Managers of the Active Industrial Enterprises According to the Reasons for Sales Level Stability or Decline by Region During July 2009

Reason	Gaza Strip	West Bank	Palestinian Territory	
Decrease in demand	:	25.3	-	
Difficulties in exporting finished goods	:	5.5	-	
Decline in the consumer purchasing power	:	39.5	-	
Product Marketing Obstacles	:	2.2	-	()
Competence product	:	13.2	-	
Seasonally related	:	8.8	-	
Military check points/ israeli actions/ closures	:	1.1	-	/ /
Other	:	4.4	-	
Total	:	100	-	

(-) No Data Available

(-)

(:) No Observations in the Sample

(:) تعني لا يوجد مشاهدات بالعينة

2009

:5

Table 5: Percentage Distribution of the Active Industrial Enterprises According to the Employment Mobility During July 2009 by Region

Employment Mobility	Gaza Strip	West Bank	Palestinian Territory	
Hiring employees	:	8.0	7.6	
Firing employees	:	5.5	5.2	
No change	100.0	86.5	87.2	
Total	100.0	100	100.0	

(:) No Observations in the Sample

(:)

2009

/

:6

Table 6: Percentage Distribution of the Existing of Competition Against the Main Product According to the Owners\ Managers of the Active Industrial Enterprises During July 2009 by Region

Competence existence	Gaza Strip	West Bank	Palestinian Territory	
There is competition	76.5	94.2	93.3	
There is no competition	23.5	5.8	6.7	
Total	100.0	100	100.0	

(-) No Data Available

(-)

2009

/

:7

Table 7: Percentage Distribution of the Type of Competition According to the Owners\ Managers of the Active Industrial Enterprises During July 2009 by Region

Type of competence	Gaza Strip	West Bank	Palestinian Territory	
Local	84.6	54.8	56.0	
Foreign	15.3	15.3	15.3	
Both	:	29.9	28.7	
Total	100.0	100	100.0	

(:) No Observations in the Sample

(:)

Table 8: Expectations of Owners/ Managers of the Active Industrial Enterprises for the Month that Follows the Reference Month Compared to the Reference Month (July, 2009) for the Main Indicators by Region

Indicator	Reference Month									
	2009							2008		
	تموز July.	حزيران June.	أيار May.	نيسان Apr.	آذار Mar.	شباط Feb.	كانون ثاني Jan.	كانون أول Dec.	تشرين ثاني Nov.	تشرين أول Oct.
Percentage of who are expecting better Enterprise situation										
Palestinian Territory	32.3	37.9	-	38.7	38.7	33.9	33.4	-	27.5	32.0
West Bank	33.6	38.8	44.1	39.4	38.8	37.1	29.1	26.5	27.3	30.7
Gaza Strip	5.9	22.2	-	26.3	39.1	65.3	85.1	-	28.9	39.2
Percentage of who are expecting higher employment level										
Palestinian Territory	11.9	11.3	-	13.3	12.8	18.1	17.0	-	12.0	10.0
West Bank	12.5	11.0	17.5	12.8	12.1	14.4	11.0	11.2	9.7	6.1
Gaza Strip	:	16.7	-	21.1	21.7	61.5	88.8	-	28.9	31.4
Percentage of who are expecting higher sales volume										
Palestinian Territory	32.9	38.2	-	37.5	36.9	39.3	34.8	-	27.5	30.9
West Bank	34.2	39.4	42.7	38.5	36.4	37.1	29.7	28.1	27.3	29.4
Gaza Strip	5.9	16.7	-	21.1	43.4	65.3	96.3	-	28.9	39.2

(-) No Data Available

(:) No Observations in the Sample

(-)

(:) تعني لا يوجد مشاهدات بالعينة

Table 9: Expectations of Owners/ Managers of the Active Industrial Enterprises for the Six Months that Follow the Reference Month Compared to the Reference Month (July, 2009) for the Main Indicators by Region

Indicator	Reference Month									
	2009					2008				
	تموز July.	حزيران June.	أيار May.	نيسان Apr.	آذار Mar.	شباط Feb.	كانون ثاني Jan.	كانون أول Dec.	تشرين ثاني Nov.	تشرين أول Oct.
Percentage of who are expecting better Enterprise situation										
Palestinian Territory	44.4	51.1	-	53.2	39.1	56.8	62.3	-	44.9	41.2
West Bank	45.5	51.1	49.0	53.8	60.2	55.7	60.5	50.2	44.6	39.3
Gaza Strip	5.9	50.0	-	42.1	39.1	69.1	85.2	-	47.4	51.0
Percentage of who are expecting higher employment level										
Palestinian Territory	21.5	24.8	-	26.9	21.7	28.5	36.0	-	20.9	17.4
West Bank	22.6	24.6	24.5	27.0	28.8	25.5	31.6	18.9	18.0	12.7
Gaza Strip	:	27.8	-	26.3	26.1	65.4	88.9	-	42.1	43.2
Percentage of who are expecting higher sales volume										
Palestinian Territory	44.8	51.7	-	54.1	43.4	56.5	62.9	-	45.6	41.1
West Bank	46.8	51.4	48.4	54.8	58.8	55.8	60.2	52.7	45.3	39.3
Gaza Strip	5.9	55.6	-	42.1	43.4	65.4	96.3	-	47.4	51.0

(-) No Data Available

(:) No Observations in the Sample

(-)

(:) تعني لا يوجد مشاهدات بالعينة

Table 10: Expectations of Owners/ Managers of the Active Industrial Enterprises about Better Expectations for their Enterprises for the Month that Follows the Reference Month (July, 2009) Compared to the Reference Month by Region

Indicator	Gaza Strip	West Bank	Palestinian Territory	
Enterprise performance in general	5.9	34.2	32.9	
Employees productivity	5.9	29.3	28.2	
Obtaining needed raw materials and inputs	:	7.6	7.3	
Reaching the employees for their work place	:	3.4	3.2	
Regularity of work	:	11.6	11.1	
Transporting finished goods to market	:	13.7	13.1	
Financial situations	:	21.5	20.4	
Banks credits & facilities	:	3.7	3.5	

(:) No Observations in the Sample

(:) تعني لا يوجد مشاهدات بالعينة

(2009)

/ :11

Table 11: Expectations of Owners/ Managers of the Active Industrial Enterprises about Better Expectations for their Enterprises for the Six Months that Follow the Reference Month (July, 2009) Compared to the Reference Month for the Main Indicators by Region

Indicator	Gaza Strip	West Bank	Palestinian Territory	
Enterprise performance in general	5.9	45.5	43.6	
Employees productivity	5.9	41.5	39.8	
Obtaining needed raw materials and inputs	:	12.2	11.6	
Reaching the employees for their work place	:	4.9	4.7	
Regularity of work	:	17.9	18	
Transporting finished goods to market	:	19.3	18.3	
Financial situations	:	30.0	28.5	
Banks credits & facilities	:	4.6	4.4	

(:) No Observations in the Sample

(:) تعني لا يوجد مشاهدات بالعينة

(2009)

/

:1-12

Table 12-1: Percentage Distribution of Owners/ Managers of the Active Industrial Enterprises According to Their Opinions of Main Indicators for the Month that Follows the Reference Month (July, 2009) Compared to the Reference Month in the Palestinian Territory

Indicator	Total	Not Exist	Much Worse	Somewhat Worse	/ About the Same/ Unchanged	Somewhat Better	Much Better	
Enterprise performance in general	100	:	2.0	22.7	42.4	32.3	0.6	
Production situation	100	1.5	2.0	22.7	41.5	31.7	0.6	
Volume of sales	100	:	2.0	24.4	40.7	31.7	1.2	
Employees productivity	100	1.7	2.0	20.1	48.0	27.6	0.6	
Obtaining needed raw materials and inputs	100	1.2	0.6	2.9	88.0	6.7	0.6	
Reaching the employees for their work place	100	0.3	0.3	0.6	95.6	2.6	0.6	
Regularity of work	100	:	0.9	7.0	81.0	10.5	0.6	
Level of employment	100	0.6	0.9	7.3	79.3	11.3	0.6	
Transporting finished goods to market	100	1.2	0.3	6.7	78.7	12.2	0.9	
Financial situations	100	:	0.9	15.2	63.5	19.5	0.9	
Banks credits & facilities	100	29.7	0.3	0.3	66.2	3.2	0.3	

(:) No Observations in the Sample

(:) تعني لا يوجد مشاهدات بالعينة

(2009)

/

:2-12

Table 12-2: Percentage Distribution of Owners/ Managers of the Active Industrial Enterprises According to Their Opinions of Main Indicators for the Month that Follows the Reference Month (July, 2009) Compared to the Reference Month in the West Bank

Indicator	Total	Not Exist	Much Worse	Somewhat Worse	/ About the Same/ Unchanged	Somewhat Better	Much Better	
Enterprise performance in general	100	:	2.1	23.5	40.2	33.6	0.6	
Production situation	100	:	2.1	23.5	40.8	33.0	0.6	
Volume of sales	100	:	2.1	25.4	38.3	33.0	1.2	
Employees productivity	100	0.3	2.1	21.1	47.2	28.7	0.6	
Obtaining needed raw materials and inputs	100	:	0.6	3.1	88.7	7.0	0.6	
Reaching the employees for their work place	100	0.3	0.3	0.6	95.4	2.8	0.6	
Regularity of work	100	:	0.9	7.3	80.2	11.0	0.6	
Level of employment	100	0.6	0.9	7.6	78.4	11.9	0.6	
Transporting finished goods to market	100	:	0.3	7.0	79.0	12.8	0.9	
Financial situations	100	:	0.9	16.0	61.7	20.6	0.9	
Banks credits & facilities	100	27.8	0.3	0.3	67.9	3.4	0.3	

(:) No Observations in the Sample

(:) تعني لا يوجد مشاهدات بالعينة

(2009)

/

:3-12

Table 12-3: Percentage Distribution of Owners/ Managers of the Active Industrial Enterprises According to Their Opinions of Main Indicators for the Month that Follows the Reference Month (July, 2009) Compared to the Reference Month in Gaza Strip

Indicator	Total	Not Exist	Much Worse	Somewhat Worse	/ About the Same/ Unchanged	Somewhat Better	Much Better	
Enterprise performance in general	100	:	:	5.9	88.2	5.9	:	
Production situation	100	29.4	:	5.9	58.8	5.9	:	
Volume of sales	100	:	:	5.9	88.2	5.9	:	
Employees productivity	100	29.4	:	:	64.7	5.9	:	
Obtaining needed raw materials and inputs	100	23.5	:	:	76.5	:	:	
Reaching the employees for their work place	100	:	:	:	100.0	:	:	
Regularity of work	100	:	:	:	100.0	:	:	
Level of employment	100	:	:	:	100.0	:	:	
Transporting finished goods to market	100	23.5	:	:	76.5	:	:	
Financial situations	100	:	:	:	100.0	:	:	
Banks credits & facilities	100	64.7	:	:	35.3	:	:	

(:) No Observations in the Sample

(:) تعني لا يوجد مشاهدات بالعينة

(2009)

/

:1-13

Table 13-1: Percentage Distribution of Owners/ Managers of the Active Industrial Enterprises According to Their Opinions of Main Indicators During the Next Six Months Compared to Reference Month (July, 2009) in the Palestinian Territory

Indicator	Total	Not Exist	Much Worse	Somewhat Worse	/ About the Same/ Unchanged	Somewhat Better	Much Better	
Enterprise performance in general	100	:	2.6	16.6	37.2	41.3	2.3	
Production situation	100	1.5	2.6	17.2	34.3	42.4	2.0	
Volume of sales	100	:	2.6	18.6	34.0	42.2	2.6	
Employees productivity	100	1.7	2.0	15.4	41.2	37.8	2.0	
Obtaining needed raw materials and inputs	100	1.2	0.6	4.1	82.5	9.6	2.0	
Reaching the employees for their work place	100	0.3	0.3	0.9	93.8	3.2	1.5	
Regularity of work	100	:	1.5	6.7	73.8	16.3	1.7	
Level of employment	100	0.6	1.2	6.4	70.3	19.5	2.0	
Transporting finished goods to market	100	1.2	0.9	8.2	71.4	16.3	2.0	
Financial situations	100	:	2.3	14.3	84.9	26.5	2.0	
Banks credits & facilities	100	30.0	0.3	0.3	65.0	3.8	0.6	

(:) No Observations in the Sample

(:) تعني لا يوجد مشاهدات بالعينة

(2009)

/

:2-13

Table 13-2: Percentage Distribution of Owners/ Managers of the Active Industrial Enterprises According to Their Opinions of Main Indicators During the Next Six Months Compared to Reference Month (July, 2009) in the West Bank

Indicator	Total	Not Exist	Much Worse	Somewhat Worse	/ About the Same/ Unchanged	Somewhat Better	Much Better	
Enterprise performance in general	100	:	2.8	17.1	34.6	43.1	2.4	
Production situation	100	:	2.8	17.7	33.1	44.3	2.1	
Volume of sales	100	:	2.8	19.3	31.1	44.0	2.8	
Employees productivity	100	0.3	2.1	16.2	39.9	39.4	2.1	
Obtaining needed raw materials and inputs	100	:	0.6	4.3	82.9	10.1	2.1	
Reaching the employees for their work place	100	0.3	0.3	0.9	93.6	3.4	1.5	
Regularity of work	100	:	1.5	7.0	72.6	17.1	1.8	
Level of employment	100	0.6	1.2	6.7	68.9	20.5	2.1	
Transporting finished goods to market	100	:	0.9	8.6	71.2	17.2	2.1	
Financial situations	100	:	2.5	15.0	52.5	27.9	2.1	
Banks credits & facilities	100	28.2	0.3	0.3	66.6	4.0	0.6	

(:) No Observations in the Sample

(:) تعني لا يوجد مشاهدات بالعينة

Table 13-3: Percentage Distribution of Owners/ Managers of the Active Industrial Enterprises According to Their Opinions of Main Indicators During the Next Six Months Compared to Reference Month (July, 2009) in Gaza Strip

Indicator	Total	Not Exist	Much Worse	Somewhat Worse	/ About the Same/ Unchanged	Somewhat Better	Much Better	
Enterprise performance in general	100	:	:	5.9	88.2	5.9	:	
Production situation	100	29.4	:	5.9	58.8	5.9	:	
Volume of sales	100	:	:	5.9	88.2	5.9	:	
Employees productivity	100	29.4	:	:	64.7	5.9	:	
Obtaining needed raw materials and inputs	100	23.5	:	:	76.5	:	:	
Reaching the employees for their work place	100	:	:	:	100.0	:	:	
Regularity of work	100	:	:	:	100.0	:	:	
Level of employment	100	:	:	:	100.0	:	:	
Transporting finished goods to market	100	23.5	:	:	76.5	:	:	
Financial situations	100	:	:	:	100.0	:	:	
Banks credits & facilities	100	64.7	:	:	35.3	:	:	

(:) No Observations in the Sample

(:) تعني لا يوجد مشاهدات بالعينة