

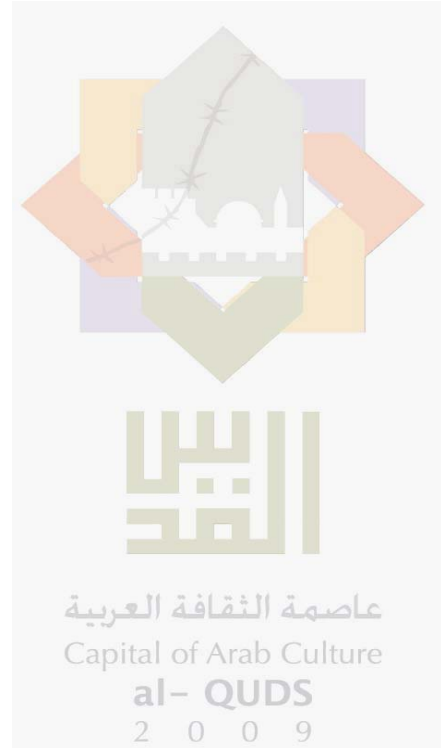
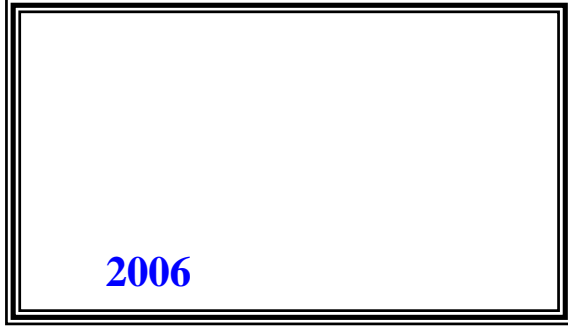


**2008**

/

**2008**

/



© 1429 - 2008.

:

/

2008.

2008

:

/

1647 . . -

: 2 242 6340 (970/972)

: 2 242 6343 (970/972)

: [diwan@pcbs.gov.ps](mailto:diwan@pcbs.gov.ps)

: <http://www.pcbs.gov.ps>

---

**5**

/

2008

**9**



/

**2008**

/

45

2008/12/23-03

/

2008

138                      343    )    496

(J1                      15

2004

%70

.2004

**2008**                      **2008**

:

%26.6                      %29.7

%7.7

%18.8

/                      %11.7                      :

تشرين ثاني 2008

.                      %6.4                      مقارنة مع شهر تشرين أول 2008

/                      %21.3                      :

.                      %9.0

/                      %18.9                      :

.                      %7.7

/                      %5.5                      :

%1.3

:

/                      %19.3

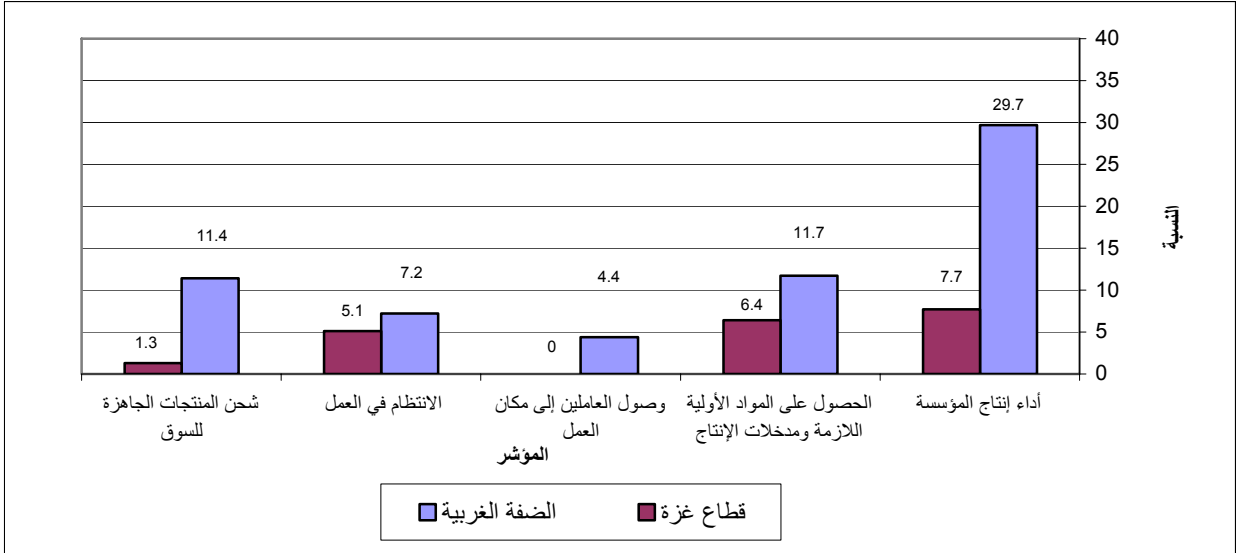
%89.5

: / %88.9  
 %77.1 .( %91.7 %68.4)  
 %88.5) /  
 %24.0 %11.5) %22.9 ( %76.0  
 .( :  
 / %8.3  
 %85.6 ( %8.0 %10.5) 2008  
 %79.0 %86.6)  
 .(  
 - /  
 -(2008 )  
 / %27.5  
 /  
 %12.0 2008  
 / %27.5  
 .2008  
 ( )  
 %44.9  
 ( %47.4 %44.6)  
 %18.0) %20.9  
 %45.6 ( %42.1  
 45.3) /  
 .( %47.4 %

2008

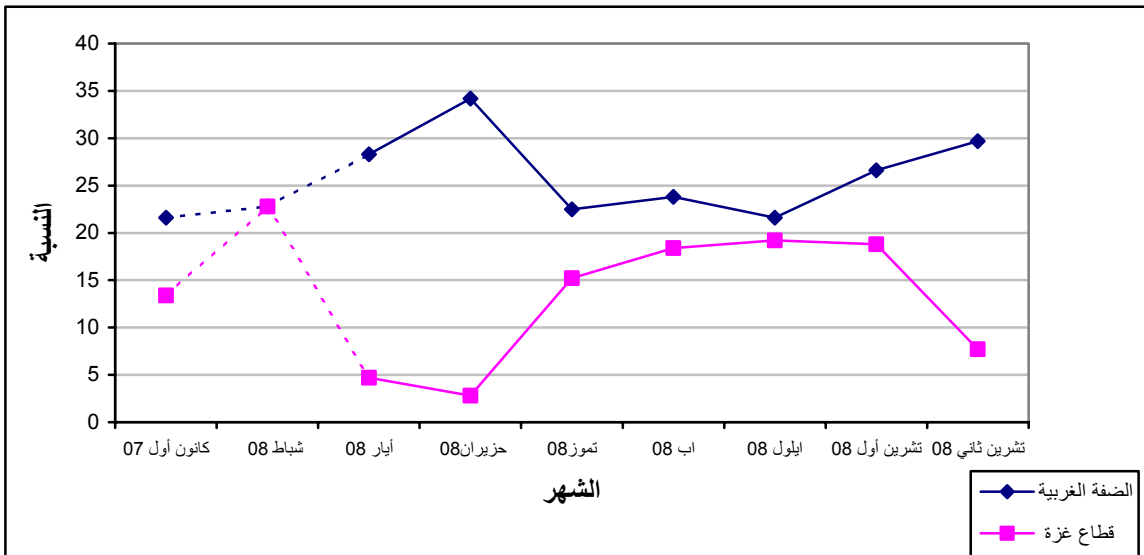
2008

:1



(2008 )

:2



# Tables



2008

**Table 1-1: Percentage of the Industrial Establishments Witnessed an Improved Situation During the Reference Month Compared to that before the Reference Month for the Main Indicators in the Palestinian Territory 2008**

Indicator	Reference Month									
	2008									
	تشرين ثاني Dec.	تشرين أول Oct.	Sept.	Aug.	July	June	May	April	Mar.	Feb.
Establishment performance in general	25.0	24.8	21.0	22.2	20.9	27.4	23.7	-	-	22.8
Obtaining needed raw materials and inputs	10.6	12.2	10.5	12.4	10.6	29.8	27.9	-	-	21.4
Problems of employees reaching place of work	3.5	6.1	3.6	3.9	3.9	26.2	25.2	-	-	16.7
Regularity of work	6.8	9.8	7.3	7.8	4.2	12.4	9.4	-	-	6.3
Transporting finished goods to market	9.2	8.5	7.1	8.3	11.4	4.5	4.6	-	-	4.0

(-) No Data Available

(-)

:2-1

2008

**Table 1-2: Percentage of Industrial Establishments Witnessed an Improved Situation During the Reference Month Compared to that before the Reference Month for the Main Indicators in the West Bank 2008**

Indicator	Reference Month									
	2008									
	تشرين ثاني Dec.	تشرين أول Oct.	Sept.	Aug.	July	June	May	April	Mar.	Feb.
Establishment performance in general	29.7	26.6	21.6	23.8	22.5	34.2	28.3	-	-	22.8
Obtaining needed raw materials and inputs	11.7	10.6	8.8	10.6	11.1	37.3	33.6	-	-	21.2
Problems of employees reaching place of work	4.4	6.5	5.0	4.8	3.9	32.6	30.1	-	-	15.7
Regularity of work	7.2	8.9	6.4	5.2	3.2	15.4	10.9	-	-	6.3
Transporting finished goods to market	11.4	8.2	8.2	10.3	13.6	5.4	5.3	-	-	2.8

(-) No Data Available

(-)

2008

**Table 1-3: Percentage of Industrial Establishments Witnessed an Improved Situation During the Reference Month Compared to that before the Reference Month for the Main Indicators in Gaza Strip 2008**

Indicator	Reference Month									
	2008									
	تشرين ثاني Dec.	تشرين أول Oct.	Sept.	Aug.	July	June	May	April	Mar.	Feb.
Establishment performance in general	7.7	18.8	19.2	18.4	15.2	2.8	4.7	-	-	22.8
Obtaining needed raw materials and inputs	6.4	17.7	15.1	16.7	8.9	2.8	4.7	-	-	22.8
Problems of employees reaching place of work	0.0	4.7	0.0	1.8	3.8	2.8	4.7	-	-	22.8
Regularity of work	5.1	13.0	10.1	14.1	7.6	1.4	3.1	-	-	6.8
Transporting finished goods to market	1.3	9.4	4.0	3.5	3.8	1.4	1.6	-	-	11.4

(-) No Data Available

(-)

2008

**Table 2-1: Percentage Distribution of Owners/ Managers of the Industrial Establishments According to Their Opinions of Main Indicators During November 2008 Compared to October 2008 in the Palestinian Territory**

Problem	Total	Much Worse	Somewhat Worse	/ About the Same/ Unchanged	Somewhat Better	Much Better	
Establishment performance in general	100	3.3	19.8	51.9	22.8	2.2	
Production situation	100	3.0	22.8	48.7	23.6	1.9	
Employees productivity	100	2.2	16.8	62.2	17.7	1.1	
Obtaining needed raw materials and inputs	100	3.0	10.6	75.8	10.1	0.5	
Problems of employees reaching place of work	100	0.0	1.9	94.5	3.3	0.3	
Regularity of work	100	2.2	6.5	84.5	6.5	0.3	
Transporting finished goods to market	100	0.5	12.0	78.3	9.2	0.0	
Financial situations	100	3.5	20.7	59.2	15.5	1.1	
Banks credits & facilities	100	0.0	3.0	92.4	4.6	0.0	
Level of employment	100	0.5	8.2	82.0	9.0	0.3	
Value of sales	100	4.1	24.5	46.7	23.1	1.6	

2008

**Table 2-2: Percentage Distribution of Owners/ Managers of the Industrial Establishments According to Their Opinions of Main Indicators During November 2008 Compared to October 2008 in the West Bank**

Problem	Total	Much Worse	Somewhat Worse	/ About the Same/ Unchanged	Somewhat Better	Much Better	
Establishment performance in general	100	1.7	22.1	46.6	27.2	2.4	
Production situation	100	1.4	25.9	42.7	27.9	2.1	
Employees productivity	100	0.3	18.6	59.8	20.3	1.0	
Obtaining needed raw materials and inputs	100	0.0	10.3	78.0	11.4	0.3	
Problems of employees reaching place of work	100	0.0	2.1	93.5	4.1	0.3	
Regularity of work	100	0.3	6.2	86.3	7.2	0.0	
Transporting finished goods to market	100	0.0	13.1	75.5	11.4	0.0	
Financial situations	100	2.1	24.5	54.5	17.9	1.0	
Banks credits & facilities	100	0.0	2.8	91.7	5.5	0.0	
Level of employment	100	0.3	9.0	79.7	11.0	0.0	
Value of sales	100	2.1	27.6	40.3	28.3	1.7	

2008

**Table 2-3: : Percentage Distribution of Owners/ Managers of the Industrial Establishments According to Their Opinions of Main Indicators During November 2008 Compared to October 2008 in Gaza Strip**

Problem	Total	Much Worse	Somewhat Worse	/ About the Same/ Unchanged	Somewhat Better	Much Better	
Establishment performance in general	100	9.0	11.5	71.8	6.4	1.3	
Production situation	100	9.0	11.5	70.5	7.7	1.3	
Employees productivity	100	9.0	10.3	71.7	7.7	1.3	
Obtaining needed raw materials and inputs	100	14.1	11.5	68.0	5.1	1.3	
Problems of employees reaching place of work	100	0.0	1.3	98.7	0.0	0.0	
Regularity of work	100	9.0	7.7	78.2	3.8	1.3	
Transporting finished goods to market	100	2.6	7.7	88.4	1.3	0.0	
Financial situations	100	9.0	6.4	76.9	6.4	1.3	
Banks credits & facilities	100	0.0	3.8	94.9	1.3	0.0	
Level of employment	100	1.3	5.1	91.0	1.3	1.3	
Value of sales	100	11.5	12.8	70.6	3.8	1.3	

**Table 3: Percentage of Industrial Establishments Witnessed an Improved Situation During the Reference Month (November 2008) Compared to that before the Reference Month for the Main Indicators by Region**

Indicator	Gaza Strip	West Bank	Palestinian Territory	
Employees productivity	9.0	21.3	18.8	
Financial situations	7.7	18.9	16.6	
Banks credits & facilities	1.3	5.5	4.6	
Level of employment	2.6	11.0	9.3	
Value of sales	5.1	30.0	24.7	

/ :4

2008

**Table 4: Percentage Distribution of Owners/Managers of the Active Industrial Establishments According to the Reasons for Sales Level Stability or Decline by Region During November 2008**

Reason	Gaza Strip	West Bank	Palestinian Territory	
Decrease in demand	5.3	18.2	15.9	
Difficulties in exporting finished goods	0.0	2.3	1.9	
Decline in the consumer purchasing power	0.0	19.3	15.9	
Product Marketing Obstacles	0.0	8.0	6.5	( )
Competence product	0.0	5.7	4.7	
Seasonally related	5.2	18.1	15.9	
Military check points/ israeli actions/ closures	89.5	14.8	28.0	/ /
Other	0.0	13.6	11.2	
<b>Total</b>	<b>100</b>	<b>100</b>	<b>100</b>	

2008

:5

**Table 5: Percentage Distribution of the Active Industrial Establishments According to the Employment Mobility During November 2008 by Region**

Employment Mobility	Gaza Strip	West Bank	Palestinian Territory	
Hiring employees	10.5	5.4	6.1	
Firing employees	10.5	8.0	8.3	
No change	79.0	86.6	85.6	
<b>Total</b>	<b>100</b>	<b>100</b>	<b>100</b>	

2008

/

:6

**Table 6: Percentage Distribution of the Existing of Competition against the Main Product According to the Owners\ Managers of the Active Industrial Establishments During November 2008 by Region**

Competence existence	Gaza Strip	West Bank	Palestinian Territory	
There is competition	68.4	91.7	88.9	
There is no competition	31.6	8.3	11.1	
<b>Total</b>	<b>100</b>	<b>100</b>	<b>100</b>	

2008

/

:7

**Table 7: Percentage Distribution of the Type of Competition According to the Owners\ Managers of the Active Industrial Establishments During November 2008 by Region**

Type of competence	Gaza Strip	West Bank	Palestinian Territory	
Local	88.5	76.0	77.1	
Foreign	11.5	24.0	22.9	
<b>Total</b>	<b>100</b>	<b>100</b>	<b>100</b>	

**Table 8: Expectations of Owners/ Managers of the Active Industrial Establishments for the Month that Follows the Reference Month Compared to the Reference (November, 2008) Month for the Main Indicators by Region**

Indicator	Reference Month									
	2008									
	تشرين ثاني Nov.	تشرين أول Oct.	Sept.	August	July	June	May	April	Mar.	Feb.
<b>Percentage of who are expecting better establishment situation</b>										
Palestinian Territory	27.5	32.0	33.0	28.0	30.3	32.5	32.8	-	-	31.8
West Bank	27.3	30.7	29.8	21.6	26.3	29.6	29.4	36.0	35.4	31.5
Gaza Strip	28.9	39.2	46.8	58.9	53.2	54.3	46.9	-	-	34.1
<b>Percentage of who are expecting higher employment level</b>										
Palestinian Territory	12.0	10.0	16.1	15.6	10.1	11.9	15.2	-	-	7.3
West Bank	9.7	6.1	10.3	8.5	3.7	6.2	8.0	10.3	10.5	5.1
Gaza Strip	28.9	31.4	40.3	50.0	46.8	54.3	45.4	-	-	20.5
<b>Percentage of who are expecting higher sales volume</b>										
Palestinian Territory	27.5	30.9	33.9	28.6	28.7	32.0	33.2	-	-	33.3
West Bank	27.3	29.4	30.9	22.3	24.5	29.0	29.9	38.9	37.1	33.1
Gaza Strip	28.9	39.2	46.8	58.9	53.2	54.3	46.9	-	-	34.1

(-) No Data Available

(-)



**Table 9: Expectations of Owners/ Managers of the Active Industrial Establishments for the Six Months that Follow the Reference Month Compared to the Reference Month (November, 2008) for the Main Indicators by Region**

Indicator	Reference Month									
	2008									
	تشرين ثاني Nov.	تشرين أول October	Sept.	August	July	June	May	April	Mar.	Feb.
<b>Percentage of who are expecting better establishment situation</b>										
Palestinian Territory	44.9	41.2	38.8	39.9	34.5	35.7	41.6	-	-	61.7
West Bank	44.6	39.3	35.0	35.7	30.4	32.9	38.5	49.4	57.2	62.2
Gaza Strip	47.4	51.0	54.8	60.7	58.7	57.1	54.7	-	-	58.4
<b>Percentage of who are expecting higher employment level</b>										
Palestinian Territory	20.9	17.4	21.6	19.2	15.1	15.4	22.3	-	-	25.2
West Bank	18.0	12.7	14.8	12.9	8.5	9.7	14.8	15.8	22.9	23.2
Gaza Strip	42.1	43.2	50.0	50.0	54.4	57.1	53.1	-	-	38.9
<b>Percentage of who are expecting higher sales volume</b>										
Palestinian Territory	45.6	41.1	42.5	40.9	35.1	36.6	43.9	-	-	67.6
West Bank	45.3	39.3	39.5	36.8	31.1	34.1	41.3	53.8	59.8	68.9
Gaza Strip	47.4	51.0	54.8	60.7	58.7	55.9	54.7	-	-	58.4

(-) No Data Available

(-)

**Table 10: Expectations of Owners/ Managers of the Active Industrial Establishments about Better Expectations for their Establishments for the Month that Follows the Reference Month (November, 2008) Compared to the Reference Month by Region**

<b>Indicator</b>	<b>Gaza Strip</b>	<b>West Bank</b>	<b>Palestinian Territory</b>	
Establishment performance in general	28.9	24.5	25.0	
Employees productivity	28.9	16.6	18.0	
Obtaining needed raw materials and inputs	28.9	7.2	9.8	
Problems of employees reaching place of work	2.6	6.9	6.3	
Regularity of work	28.9	9.0	11.4	
Transporting finished goods to market	23.7	11.2	12.7	
Financial situations	28.9	22.0	22.8	
Banks credits & facilities	2.6	7.2	6.7	

**Table 11: Expectations of Owners/ Managers of the Active Industrial Establishments about Better Expectations for their Establishments for the Six Months that Follow the Reference Month (November,2008) Compared to the Reference Month for the Main Indicators by Region**

Indicator	Gaza Strip	West Bank	Palestinian Territory	
Establishment performance in general	47.3	42.8	43.4	
Employees productivity	47.3	29.1	31.4	
Obtaining needed raw materials and inputs	47.3	10.1	14.5	
Problems of employees reaching place of work	5.3	7.6	7.3	
Regularity of work	42.1	13.0	16.5	
Transporting finished goods to market	42.1	13.0	16.5	
Financial situations	44.7	31.2	32.8	
Banks credits & facilities	5.3	8.0	7.6	

(2008 )

/

:1-12

**Table 12-1: Percentage Distribution of Owners/ Managers of the Active Industrial Establishments According to Their Opinions of Main Indicators for the Month that Follows the Reference Month (November, 2008) Compared to the Reference Month in the Palestinian Territory**

<b>Problem</b>	<b>Total</b>	<b>Much Worse</b>	<b>Somewhat Worse</b>	<b>/ About the Same/ Unchanged</b>	<b>Somewhat Better</b>	<b>Much Better</b>	
Establishment performance in general	100	3.8	31.3	39.9	23.1	1.9	
Production situation	100	3.8	35.1	33.6	25.6	1.9	
Volume of sales	100	3.8	36.7	32.0	25.9	1.6	
Employees productivity	100	3.8	24.4	53.8	17.4	0.6	
Obtaining needed raw materials and inputs	100	4.1	10.4	75.7	9.5	0.3	
Problems of employees reaching place of work	100	1.3	3.5	88.9	6.0	0.3	
Regularity of work	100	3.2	11.1	74.3	11.1	0.3	
Level of employment	100	3.2	11.4	73.4	11.7	0.3	
Transporting finished goods to market	100	2.2	14.6	70.6	12.3	0.3	
Financial situations	100	3.8	28.5	44.9	21.5	1.3	
Banks credits & facilities	100	0.6	5.1	87.6	6.7	0.0	

(2008 )

/

:2-12

**Table 12-2: Percentage Distribution of Owners/ Managers of the Active Industrial Establishments According to Their Opinions of Main Indicators for the Month that Follows the Reference Month (November, 2008) Compared to the Reference Month in the West Bank**

<b>Problem</b>	<b>Total</b>	<b>Much Worse</b>	<b>Somewhat Worse</b>	<b>/ About the Same/ Unchanged</b>	<b>Somewhat Better</b>	<b>Much Better</b>	
Establishment performance in general	100	1.4	30.9	43.2	22.7	1.8	
Production situation	100	1.4	35.3	36.0	25.5	1.8	
Volume of sales	100	1.4	37.1	34.2	25.9	1.4	
Employees productivity	100	1.4	23.4	58.6	16.2	0.4	
Obtaining needed raw materials and inputs	100	1.4	7.6	83.8	7.2	0.0	
Problems of employees reaching place of work	100	1.4	3.2	88.5	6.5	0.4	
Regularity of work	100	1.4	7.9	81.7	9.0	0.0	
Level of employment	100	1.4	8.3	80.6	9.7	0.0	
Transporting finished goods to market	100	1.4	11.9	75.5	11.2	0.0	
Financial situations	100	1.8	27.3	48.9	20.9	1.1	
Banks credits & facilities	100	0.7	4.7	87.4	7.2	0.0	

(2008 )

/

:3-12

**Table 12-3: Percentage Distribution of Owners/ Managers of the Active Industrial Establishments According to Their Opinions of Main Indicators for the Month that Follows the Reference Month (November, 2008) Compared to the Reference Month in Gaza Strip**

<b>Problem</b>	<b>Total</b>	<b>Much Worse</b>	<b>Somewhat Worse</b>	<b>About the Same/ Unchanged</b>	<b>Somewhat Better</b>	<b>Much Better</b>	
Establishment performance in general	100	21.1	34.2	15.8	26.3	2.6	
Production situation	100	21.1	34.2	15.8	26.3	2.6	
Volume of sales	100	21.1	34.2	15.8	26.3	2.6	
Employees productivity	100	21.1	31.6	18.4	26.3	2.6	
Obtaining needed raw materials and inputs	100	23.7	31.6	15.8	26.3	2.6	
Problems of employees reaching place of work	100	0.0	5.3	92.1	2.6	0.0	
Regularity of work	100	15.8	34.2	21.1	26.3	2.6	
Level of employment	100	15.8	34.2	21.1	26.3	2.6	
Transporting finished goods to market	100	7.9	34.2	34.2	21.1	2.6	
Financial situations	100	18.4	36.8	15.9	26.3	2.6	
Banks credits & facilities	100	0.0	7.9	89.5	2.6	0.0	

**Table 13-1: Percentage Distribution of Owners/ Managers of the Active Industrial Establishments According to Their Opinions of Main Indicators During the Next Six Months Compared to Reference Month (November, 2008) in the Palestinian Territory**

<b>Problem</b>	<b>Total</b>	<b>Much Worse</b>	<b>Somewhat Worse</b>	<b>/ About the Same/ Unchanged</b>	<b>Somewhat Better</b>	<b>Much Better</b>	
Establishment performance in general	100	3.5	23.1	30.0	40.2	3.2	
Production situation	100	3.8	26.6	24.6	41.8	3.2	
Volume of sales	100	4.1	26.9	23.4	42.4	3.2	
Employees productivity	100	4.1	18.4	46.1	28.2	3.2	
Obtaining needed raw materials and inputs	100	3.8	7.6	74.1	12.0	2.5	
Problems of employees reaching place of work	100	1.6	4.1	87.0	5.4	1.9	
Regularity of work	100	3.2	10.5	69.8	14.6	1.9	
Level of employment	100	3.5	9.8	65.8	18.7	2.2	
Transporting finished goods to market	100	2.5	12.1	68.9	14.6	1.9	
Financial situations	100	3.8	24.2	39.2	30.6	2.2	
Banks credits & facilities	100	0.3	5.1	87.0	7.3	0.3	

**Table 13-2: Percentage Distribution of Owners/ Managers of the Active Industrial Establishments According to Their Opinions of Main Indicators During the Next Six Months Compared to Reference Month (November, 2008) in the West Bank**

<b>Problem</b>	<b>Total</b>	<b>Much Worse</b>	<b>Somewhat Worse</b>	<b>/ About the Same/ Unchanged</b>	<b>Somewhat Better</b>	<b>Much Better</b>	
Establishment performance in general	100	1.4	23.4	32.4	39.6	3.2	
Production situation	100	1.8	27.3	26.3	41.4	3.2	
Volume of sales	100	2.2	27.7	24.8	42.1	3.2	
Employees productivity	100	2.2	18.3	50.4	25.9	3.2	
Obtaining needed raw materials and inputs	100	1.4	6.1	82.4	7.6	2.5	
Problems of employees reaching place of work	100	1.1	4.0	87.3	5.4	2.2	
Regularity of work	100	1.1	9.4	76.5	11.2	1.8	
Level of employment	100	1.4	8.6	72.0	15.8	2.2	
Transporting finished goods to market	100	1.4	10.8	74.8	11.2	1.8	
Financial situations	100	1.8	24.3	42.7	29.0	2.2	
Banks credits & facilities	100	0.4	5.1	86.5	7.6	0.4	



**Table 13-3: Percentage Distribution of Owners/ Managers of the Active Industrial Establishments According to Their Opinions of Main Indicators During the Next Six Months Comparing to Reference Month (November, 2008) in Gaza Strip**

<b>Problem</b>	<b>Total</b>	<b>Much Worse</b>	<b>Somewhat Worse</b>	<b>/ About the Same/ Unchanged</b>	<b>Somewhat Better</b>	<b>Much Better</b>	
Establishment performance in general	100	18.4	21.1	13.2	44.7	2.6	
Production situation	100	18.4	21.1	13.2	44.7	2.6	
Volume of sales	100	18.4	21.1	13.2	44.7	2.6	
Employees productivity	100	18.4	18.4	15.9	44.7	2.6	
Obtaining needed raw materials and inputs	100	21.1	18.4	13.2	44.7	2.6	
Problems of employees reaching place of work	100	5.3	5.3	84.1	5.3	0.0	
Regularity of work	100	18.4	18.4	21.1	39.5	2.6	
Level of employment	100	18.4	18.4	21.1	39.5	2.6	
Transporting finished goods to market	100	10.5	21.1	26.3	39.5	2.6	
Financial situations	100	18.4	23.7	13.2	42.1	2.6	
Banks credits & facilities	100	0.0	5.3	89.4	5.3	0.0	