

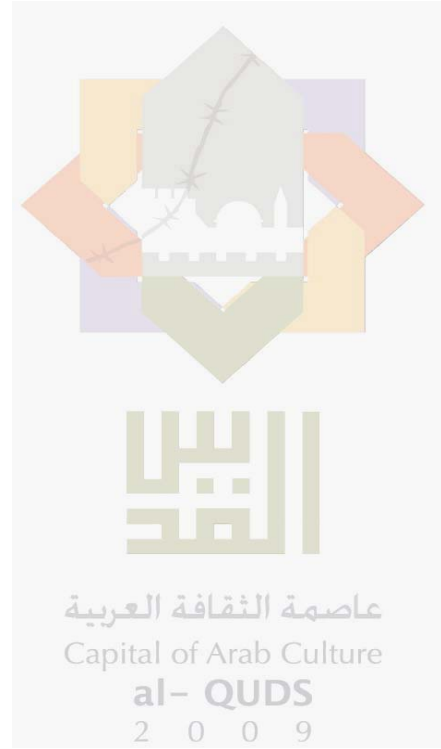
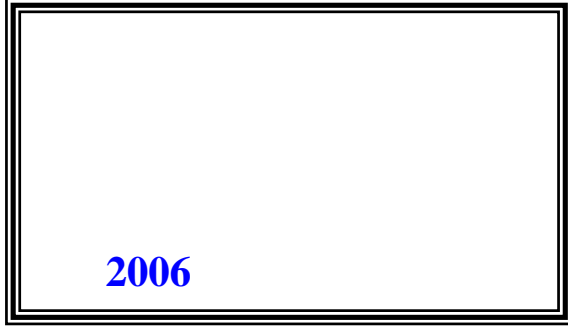


**2008**

/

**2008**

/



© 1429 - 2008

:

/

2008

2008

:

/

1647 . . -

: 2 242 6340 (970/972)

: 2 242 6343 (970/972)

: [diwan@pcbs.gov.ps](mailto:diwan@pcbs.gov.ps)

: <http://www.pcbs.gov.ps>

---

**9**

/

2008

**13**

. 496

(2006 - 2006 )

2006

346

35

(J1)

**:J1**

.1967

2008 /

44 / 2008/11/23-03  
138 / 2008 ) 496  
343 (J1 15  
2004  
%70  
20 2004

2008 2008

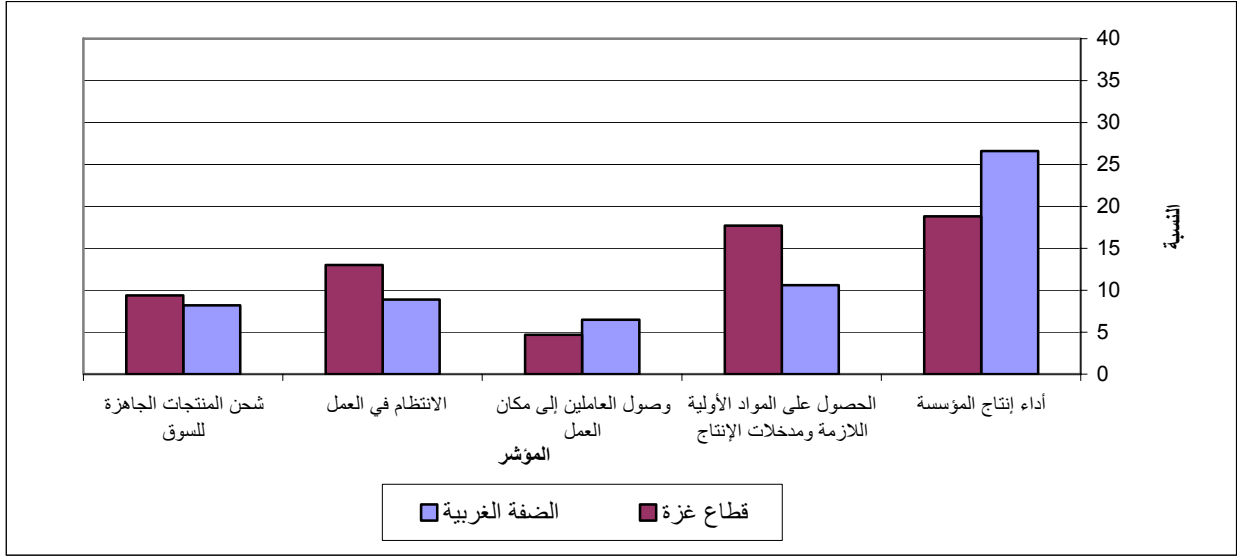
26.6 % :  
تشرين أول 2008  
%18.8 أيلول 2008  
%10.6 :  
تشرين أول 2008  
%17.7 مقارنة مع شهر أيلول 2008  
%23.2 :  
%20.0  
%19.5 :  
%13.0  
%3.1 :  
%1.2  
%55.0  
%27.0

:  
 / %90.6  
 .( %91.8 %83.7)  
 / %73.1  
 (%9.8) %26.9 ( %70.3 %90.2)  
 .( %29.7  
 :  
 / %8.9  
 %80.4 ( %7.9 %14.0) 2008  
 %58.0 %84.5  
 .(  
 - /  
 / %32.0 -(2008 )  
 . /  
 %30.9 %10.0 2008  
 /  
 .2008  
 ( )  
 %41.2  
 .( %51.0 %39.3)  
 %17.4  
 .( %43.2 %12.7)  
 / %41.1  
 %39.3)  
 .( %51.0

2008

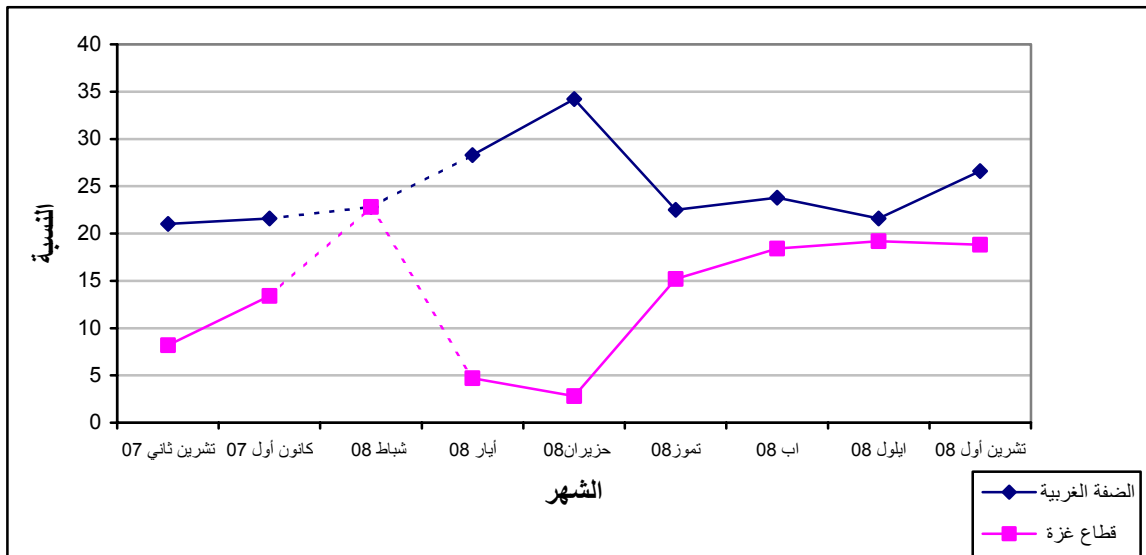
2008

:1



(2008 )

:2



# Tables



2008

**Table 1-1: Percentage of the Industrial Establishments Witnessed an Improved Situation During the Reference Month Compared to that before the Reference Month for the Main Indicators in the Palestinian Territory 2008**

Indicator	Reference Month									
	2008									
	تشرين أول Oct.	Sept.	Aug.	July	June	May	April	Mar.	Feb.	Jan.
Establishment performance in general	24.8	21.0	22.2	20.9	27.4	23.7	-	-	22.8	-
Obtaining needed raw materials and inputs	12.2	10.5	12.4	10.6	29.8	27.9	-	-	21.4	-
Problems of employees reaching place of work	6.1	3.6	3.9	3.9	26.2	25.2	-	-	16.7	-
Regularity of work	9.8	7.3	7.8	4.2	12.4	9.4	-	-	6.3	-
Transporting finished goods to market	8.5	7.1	8.3	11.4	4.5	4.6	-	-	4.0	-

(-) No Data Available

(-)

:2-1

2008 \*

**Table 1-2: Percentage of Industrial Establishments Witnessed an Improved Situation During the Reference Month Compared to that before the Reference Month for the Main Indicators in the West Bank\* 2008**

Indicator	Reference Month									
	2008									
	تشرين أول Oct.	Sept.	Aug.	July	June	May	April	Mar.	Feb.	Jan.
Establishment performance in general	26.6	21.6	23.8	22.5	34.2	28.3	-	-	22.8	-
Obtaining needed raw materials and inputs	10.6	8.8	10.6	11.1	37.3	33.6	-	-	21.2	-
Problems of employees reaching place of work	6.5	5.0	4.8	3.9	32.6	30.1	-	-	15.7	-
Regularity of work	8.9	6.4	5.2	3.2	15.4	10.9	-	-	6.3	-
Transporting finished goods to market	8.2	8.2	10.3	13.6	5.4	5.3	-	-	2.8	-

(-) No Data Available

(-)

2008

**Table 1-3: Percentage of Industrial Establishments Witnessed an Improved Situation During the Reference Month Compared to that before the Reference Month for the Main Indicators in Gaza Strip 2008**

Indicator	Reference Month									
	2008									
	تشرين أول Oct.	Sept.	Aug.	July	June	May	April	Mar.	Feb.	Jan.
Establishment performance in general	18.8	19.2	18.4	15.2	2.8	4.7	-	-	22.8	-
Obtaining needed raw materials and inputs	17.7	15.1	16.7	8.9	2.8	4.7	-	-	22.8	-
Problems of employees reaching place of work	4.7	0.0	1.8	3.8	2.8	4.7	-	-	22.8	-
Regularity of work	13.0	10.1	14.1	7.6	1.4	3.1	-	-	6.8	-
Transporting finished goods to market	9.4	4.0	3.5	3.8	1.4	1.6	-	-	11.4	-

(-) No Data Available

(-)

2008

**Table 2-1: Percentage Distribution of Owners/ Managers of the Industrial Establishments According to Their Opinions of Main Indicators During October 2008 Compared to September 2008 in the Palestinian Territory**

Problem	Total	Much Worse	Somewhat Worse	/ About the Same/ Unchanged	Somewhat Better	Much Better	
Establishment performance in general	100	4.2	26.1	44.9	22.2	2.6	
Production situation	100	4.5	27.2	40.9	24.5	2.9	
Employees productivity	100	3.2	19.8	54.5	20.4	2.1	
Obtaining needed raw materials and inputs	100	4.0	11.7	72.1	11.1	1.1	
Problems of employees reaching place of work	100	0.3	0.8	92.8	5.6	0.5	
Regularity of work	100	0.8	5.0	84.4	8.5	1.3	
Transporting finished goods to market	100	1.1	14.6	75.8	7.7	0.8	
Financial situations	100	2.9	19.6	59.5	15.9	2.1	
Banks credits & facilities	100	0.8	1.9	94.6	2.7	0.0	
Level of employment	100	0.5	9.3	78.8	10.1	1.3	
Value of sales	100	5.3	27.2	40.6	24.0	2.9	

\*

2008

**Table 2-2: Percentage Distribution of Owners/ Managers of the Industrial Establishments According to Their Opinions of Main Indicators During October 2008 Compared to September 2008 in the West Bank**

<b>Problem</b>	<b>Total</b>	<b>Much Worse</b>	<b>Somewhat Worse</b>	<b>About the Same/ Unchanged</b>	<b>Somewhat Better</b>	<b>Much Better</b>
Establishment performance in general	100	3.4	26.9	43.1	23.5	3.1
Production situation	100	3.7	29.3	37.4	26.2	3.4
Employees productivity	100	2.0	20.1	54.7	20.8	2.4
Obtaining needed raw materials and inputs	100	1.4	12.7	75.3	9.6	1.0
Problems of employees reaching place of work	100	0.0	0.3	93.2	5.8	0.7
Regularity of work	100	0.0	3.8	87.3	7.5	1.4
Transporting finished goods to market	100	1.0	17.1	73.7	7.5	0.7
Financial situations	100	3.4	20.2	56.9	17.1	2.4
Banks credits & facilities	100	0.7	1.4	94.8	3.1	0.0
Level of employment	100	0.0	9.9	80.1	8.6	1.4
Value of sales	100	4.1	31.0	35.6	25.9	3.4

2008

**Table 2-3: : Percentage Distribution of Owners/ Managers of the Industrial Establishments According to Their Opinions of Main Indicators During October 2008 Compared to September 2008 in Gaza Strip**

Problem	Total	Much Worse	Somewhat Worse	/ About the Same/ Unchanged	Somewhat Better	Much Better	
Establishment performance in general	100	7.1	23.5	50.6	17.6	1.2	
Production situation	100	7.1	20.0	52.9	18.8	1.2	
Employees productivity	100	7.1	18.8	54.1	18.8	1.2	
Obtaining needed raw materials and inputs	100	12.9	8.2	61.2	16.5	1.2	
Problems of employees reaching place of work	100	1.2	2.4	91.7	4.7	0.0	
Regularity of work	100	3.5	9.4	74.1	11.8	1.2	
Transporting finished goods to market	100	1.2	5.9	83.5	8.2	1.2	
Financial situations	100	1.2	17.6	68.2	11.8	1.2	
Banks credits & facilities	100	1.2	3.5	94.1	1.2	0.0	
Level of employment	100	2.4	7.1	74.0	15.3	1.2	
Value of sales	100	9.4	14.1	57.7	17.6	1.2	

**Table 3: Percentage of Industrial Establishments Witnessed an Improved Situation During the Reference Month (October 2008) Compared to that before the Reference Month for the Main Indicators by Region**

Indicator	Gaza Strip	* West Bank*	Palestinian Territory	
Employees productivity	20.0	23.2	22.5	
Financial situations	13.0	19.5	18.0	
Banks credits & facilities	1.2	3.1	2.7	
Level of employment	16.5	10.0	11.4	
Value of sales	18.8	29.3	26.9	

/ :4

2008

**Table 4: Percentage Distribution of Owners/Managers of the Active Industrial Establishments According to the Reasons for Sales Level Stability or Decline by Region During October 2008**

Reason	Gaza Strip	* West Bank*	Palestinian Territory	
Decrease in demand	25.0	15.0	16.7	
Difficulties in exporting finished goods	0.0	2.0	1.6	
Decline in the consumer purchasing power	5.0	27.0	23.3	
Product Marketing Obstacles	0.0	5.0	4.2	( )
Competence product	10.0	3.0	4.2	
Seasonally related	0.0	20.0	16.7	
Military check points/ israeli actions/ closures	55.0	11.0	18.3	/ /
Other	5.0	17.0	15.0	
<b>Total</b>	<b>100</b>	<b>100</b>	<b>100</b>	

2008

:5

**Table 5: Percentage Distribution of the Active Industrial Establishments According to the Employment Mobility During October 2008 by Region**

Employment Mobility	Gaza Strip	* West Bank*	Palestinian Territory	
Hiring employees	28.0	7.6	10.7	
Firing employees	14.0	7.9	8.9	
No change	58.0	84.5	80.4	
<b>Total</b>	<b>100</b>	<b>100</b>	<b>100</b>	

2008

/

:6

**Table 6: Percentage Distribution of the Existing of Competition against the Main Product According to the Owners\ Managers of the Active Industrial Establishments During October 2008 by Region**

Competence existence	Gaza Strip	* West Bank*	Palestinian Territory	
There is competition	83.7	91.8	90.6	
There is no competition	16.3	8.2	9.4	
<b>Total</b>	<b>100</b>	<b>100</b>	<b>100</b>	

2008

/

:7

**Table 7: Percentage Distribution of the Type of Competition According to the Owners\ Managers of the Active Industrial Establishments During October 2008 by Region**

Type of competence	Gaza Strip	* West Bank*	Palestinian Territory	
Local	90.2	70.3	73.1	
Foreign	9.8	29.7	26.9	
<b>Total</b>	<b>100</b>	<b>100</b>	<b>100</b>	

**Table 8: Expectations of Owners/ Managers of the Active Industrial Establishments for the Month that Follows the Reference Month Compared to the Reference (October, 2008) Month for the Main Indicators by Region**

Indicator	Reference Month										
	2008										
	تشرين أول October	Sept.	August	July	June	May	April	Mar.	Feb.	Jan.	
<b>Percentage of who are expecting better establishment situation</b>											
Palestinian Territory	32.0	33.0	28.0	30.3	32.5	32.8	-	-	31.8	28.7	
West Bank*	30.7	29.8	21.6	26.3	29.6	29.4	36.0	35.4	31.5	26.2	*
Gaza Strip	39.2	46.8	58.9	53.2	54.3	46.9	-	-	34.1	56.5	
<b>Percentage of who are expecting higher employment level</b>											
Palestinian Territory	10.0	16.1	15.6	10.1	11.9	15.2	-	-	7.3	6.9	
West Bank*	6.1	10.3	8.5	3.7	6.2	8.0	10.3	10.5	5.1	4.7	*
Gaza Strip	31.4	40.3	50.0	46.8	54.3	45.4	-	-	20.5	30.4	
<b>Percentage of who are expecting higher sales volume</b>											
Palestinian Territory	30.9	33.9	28.6	28.7	32.0	33.2	-	-	33.3	31.2	
West Bank*	29.4	30.9	22.3	24.5	29.0	29.9	38.9	37.1	33.1	28.9	*
Gaza Strip	39.2	46.8	58.9	53.2	54.3	46.9	-	-	34.1	56.5	

(-) No Data Available

(-)



**Table 9: Expectations of Owners/ Managers of the Active Industrial Establishments for the Six Months that Follow the Reference Month Compared to the Reference Month (October, 2008) for the Main Indicators by Region**

Indicator	Reference Month										
	2008										
	تشرين أول October	Sept.	August	July	June	May	April	Mar.	Feb.	Jan.	
<b>Percentage of who are expecting better establishment situation</b>											
Palestinian Territory	41.2	38.8	39.9	34.5	35.7	41.6	-	-	61.7	59.6	
West Bank*	39.3	35.0	35.7	30.4	32.9	38.5	49.4	57.2	62.2	58.2	*
Gaza Strip	51.0	54.8	60.7	58.7	57.1	54.7	-	-	58.4	78.9	
<b>Percentage of who are expecting higher employment level</b>											
Palestinian Territory	17.4	21.6	19.2	15.1	15.4	22.3	-	-	25.2	22.7	
West Bank*	12.7	14.8	12.9	8.5	9.7	14.8	15.8	22.9	23.2	20.5	*
Gaza Strip	43.2	50.0	50.0	54.4	57.1	53.1	-	-	38.9	52.6	
<b>Percentage of who are expecting higher sales volume</b>											
Palestinian Territory	41.1	42.5	40.9	35.1	36.6	43.9	-	-	67.6	64.1	
West Bank*	39.3	39.5	36.8	31.1	34.1	41.3	53.8	59.8	68.9	63.0	*
Gaza Strip	51.0	54.8	60.7	58.7	55.9	54.7	-	-	58.4	78.9	

(-) No Data Available

(-)

**Table 10: Expectations of Owners/ Managers of the Active Industrial Establishments about Better Expectations for their Establishments for the Month that Follows the Reference Month (October, 2008) Compared to the Reference Month by Region**

<b>Indicator</b>	<b>Gaza Strip</b>	<b>* West Bank*</b>	<b>Palestinian Territory</b>	
Establishment performance in general	39.2	28.2	29.9	
Employees productivity	39.2	18.6	21.8	
Obtaining needed raw materials and inputs	35.3	7.2	11.5	
Problems of employees reaching place of work	11.8	4.7	5.8	
Regularity of work	31.4	5.8	9.7	
Transporting finished goods to market	17.6	8.3	9.7	
Financial situations	35.3	22.2	24.2	
Banks credits & facilities	8.0	2.2	3.0	

**Table 11: Expectations of Owners/ Managers of the Active Industrial Establishments about Better Expectations for their Establishments for the Six Months that Follow the Reference Month (October,2008) Compared to the Reference Month for the Main Indicators by Region**

Indicator	Gaza Strip	* West Bank*	Palestinian Territory	
Establishment performance in general	51.0	37.5	39.7	
Employees productivity	51.0	23.1	27.4	
Obtaining needed raw materials and inputs	47.1	9.7	15.5	
Problems of employees reaching place of work	23.5	6.2	8.8	
Regularity of work	43.2	8.6	14.0	
Transporting finished goods to market	29.4	11.9	14.6	
Financial situations	47.1	28.5	31.4	
Banks credits & facilities	18.0	3.6	5.8	

(2008 )

/

:1-12

**Table 12-1: Percentage Distribution of Owners/ Managers of the Active Industrial Establishments According to Their Opinions of Main Indicators for the Month that Follows the Reference Month (October, 2008) Compared to the Reference Month in the Palestinian Territory**

<b>Problem</b>	<b>Total</b>	<b>Much Worse</b>	<b>Somewhat Worse</b>	<b>/ About the Same/ Unchanged</b>	<b>Somewhat Better</b>	<b>Much Better</b>	
Establishment performance in general	100	1.8	25.7	42.6	27.2	2.7	
Production situation	100	1.8	27.5	38.7	29.3	2.7	
Volume of sales	100	2.1	29.1	37.9	28.8	2.1	
Employees productivity	100	1.2	19.1	57.9	20.0	1.8	
Obtaining needed raw materials and inputs	100	2.1	10.0	76.4	10.6	0.9	
Problems of employees reaching place of work	100	0.0	4.2	90.0	5.5	0.3	
Regularity of work	100	0.9	10.9	78.5	9.1	0.6	
Level of employment	100	1.2	10.9	77.9	9.4	0.6	
Transporting finished goods to market	100	1.5	10.3	78.5	9.1	0.6	
Financial situations	100	1.8	23.0	51.0	22.4	1.8	
Banks credits & facilities	100	0.6	4.6	91.8	3.0	0.0	

\*

(2008 )

/

:2-12

**Table 12-2: Percentage Distribution of Owners/ Managers of the Active Industrial Establishments According to Their Opinions of Main Indicators for the Month that Follows the Reference Month (October, 2008) Compared to the Reference Month in the West Bank\***

<b>Problem</b>	<b>Total</b>	<b>Much Worse</b>	<b>Somewhat Worse</b>	<b>About the Same/ Unchanged</b>	<b>Somewhat Better</b>	<b>Much Better</b>
Establishment performance in general	100	1.1	24.3	46.4	25.7	2.5
Production situation	100	1.1	26.4	41.8	28.2	2.5
Volume of sales	100	1.1	28.3	41.2	27.6	1.8
Employees productivity	100	0.4	16.5	64.5	17.2	1.4
Obtaining needed raw materials and inputs	100	1.1	6.1	85.6	6.8	0.4
Problems of employees reaching place of work	100	0.0	0.7	94.6	4.3	0.4
Regularity of work	100	0.0	6.5	87.7	5.4	0.4
Level of employment	100	0.4	6.8	86.7	5.7	0.4
Transporting finished goods to market	100	1.4	7.2	83.1	7.6	0.7
Financial situations	100	1.1	21.1	55.6	20.8	1.4
Banks credits & facilities	100	0.7	1.4	95.7	2.2	0.0

(2008 )

/

:3-12

**Table 12-3: Percentage Distribution of Owners/ Managers of the Active Industrial Establishments According to Their Opinions of Main Indicators for the Month that Follows the Reference Month (October, 2008) Compared to the Reference Month in Gaza Strip**

<b>Problem</b>	<b>Total</b>	<b>Much Worse</b>	<b>Somewhat Worse</b>	<b>/ About the Same/ Unchanged</b>	<b>Somewhat Better</b>	<b>Much Better</b>	
Establishment performance in general	100	5.9	33.3	21.6	35.3	3.9	
Production situation	100	5.9	33.3	21.6	35.3	3.9	
Volume of sales	100	7.8	33.3	19.7	35.3	3.9	
Employees productivity	100	5.9	33.3	21.6	35.3	3.9	
Obtaining needed raw materials and inputs	100	7.8	31.4	25.5	31.4	3.9	
Problems of employees reaching place of work	100	0.0	23.5	64.7	11.8	0.0	
Regularity of work	100	5.9	35.3	27.4	29.4	2.0	
Level of employment	100	5.9	33.3	29.4	29.4	2.0	
Transporting finished goods to market	100	2.0	27.5	52.9	17.6	0.0	
Financial situations	100	5.9	33.3	25.5	31.4	3.9	
Banks credits & facilities	100	0.0	22.0	70.0	8.0	0.0	

**Table 13-1: Percentage Distribution of Owners/ Managers of the Active Industrial Establishments According to Their Opinions of Main Indicators During the Next Six Months Compared to Reference Month (October, 2008) in the Palestinian Territory**

<b>Problem</b>	<b>Total</b>	<b>Much Worse</b>	<b>Somewhat Worse</b>	<b>/ About the Same/ Unchanged</b>	<b>Somewhat Better</b>	<b>Much Better</b>	
Establishment performance in general	100	2.4	26.8	31.1	35.7	4.0	
Production situation	100	4.3	29.3	25.2	37.2	4.0	
Volume of sales	100	4.6	29.0	25.3	38.1	3.0	
Employees productivity	100	3.7	20.1	48.8	25.3	2.1	
Obtaining needed raw materials and inputs	100	2.7	8.8	73.0	13.7	1.8	
Problems of employees reaching place of work	100	0.6	2.4	88.2	8.5	0.3	
Regularity of work	100	2.7	9.1	74.2	13.1	0.9	
Level of employment	100	1.8	10.4	70.4	16.2	1.2	
Transporting finished goods to market	100	2.1	9.1	74.2	13.4	1.2	
Financial situations	100	3.7	22.9	42.0	29.9	1.5	
Banks credits & facilities	100	1.2	3.1	89.9	5.8	0.0	

\*

(2008 )

/

:2-13

**Table 13-2: Percentage Distribution of Owners/ Managers of the Active Industrial Establishments According to Their Opinions of Main Indicators During the Next Six Months Compared to Reference Month (October, 2008) in the West Bank\***

<b>Problem</b>	<b>Total</b>	<b>Much Worse</b>	<b>Somewhat Worse</b>	<b>About the Same/ Unchanged</b>	<b>Somewhat Better</b>	<b>Much Better</b>
Establishment performance in general	100	1.8	26.4	34.3	33.2	4.3
Production situation	100	4.0	29.2	27.5	35.0	4.3
Volume of sales	100	4.0	29.2	27.5	36.1	3.2
Employees productivity	100	3.2	18.8	54.9	20.9	2.2
Obtaining needed raw materials and inputs	100	1.8	6.5	82.0	7.9	1.8
Problems of employees reaching place of work	100	0.7	0.0	93.1	5.8	0.4
Regularity of work	100	2.2	5.4	83.8	7.9	0.7
Level of employment	100	1.1	7.2	79.0	11.6	1.1
Transporting finished goods to market	100	2.2	7.2	78.7	10.5	1.4
Financial situations	100	3.2	21.7	46.6	27.1	1.4
Banks credits & facilities	100	1.4	0.7	94.3	3.6	0.0



**Table 13-3: Percentage Distribution of Owners/ Managers of the Active Industrial Establishments According to Their Opinions of Main Indicators During the Next Six Months Comparing to Reference Month (October, 2008) in Gaza Strip**

<b>Problem</b>	<b>Total</b>	<b>Much Worse</b>	<b>Somewhat Worse</b>	<b>/ About the Same/ Unchanged</b>	<b>Somewhat Better</b>	<b>Much Better</b>	
Establishment performance in general	100	5.9	29.4	13.7	49.0	2.0	
Production situation	100	5.9	29.4	13.7	49.0	2.0	
Volume of sales	100	7.8	27.5	13.7	49.0	2.0	
Employees productivity	100	5.9	27.5	15.6	49.0	2.0	
Obtaining needed raw materials and inputs	100	7.8	21.6	23.5	45.1	2.0	
Problems of employees reaching place of work	100	0.0	15.7	60.8	23.5	0.0	
Regularity of work	100	5.9	29.4	21.5	41.2	2.0	
Level of employment	100	5.9	27.5	23.4	41.2	2.0	
Transporting finished goods to market	100	2.0	19.6	49.0	29.4	0.0	
Financial situations	100	5.9	29.4	17.6	45.1	2.0	
Banks credits & facilities	100	0.0	16.0	66.0	18.0	0.0	