



2008

/

2008

/

2006

.2008 - 1429 ©

:

/

.2008

2008

-

:

/

- 1647 . .

(970/972) 2 242 6340 :

(970/972) 2 242 6343 :

diwan@pcbs.gov.ps :

<http://www.pcbs.gov.ps> :

9

/

2008

13

. 496

(2006 - 2006)

2006

346

35

(J1)

:J1

.1967

/
2008

2008/6/3

/

39

/

2008

2008/6/23 -

15

138

343

)

496

.

(J1

2004

2004

%70

20

2008

2008

/

%78.1 :

%19.2

2008

2008

%78.2 :

%16.2 أيار 2008 مقارنة مع شهر نيسان 2008

/

%73.4 :

%20.8

/

%71.8

:

%18.5

/

%36.0

:

%2.7

:

/

%86.3

%9.8

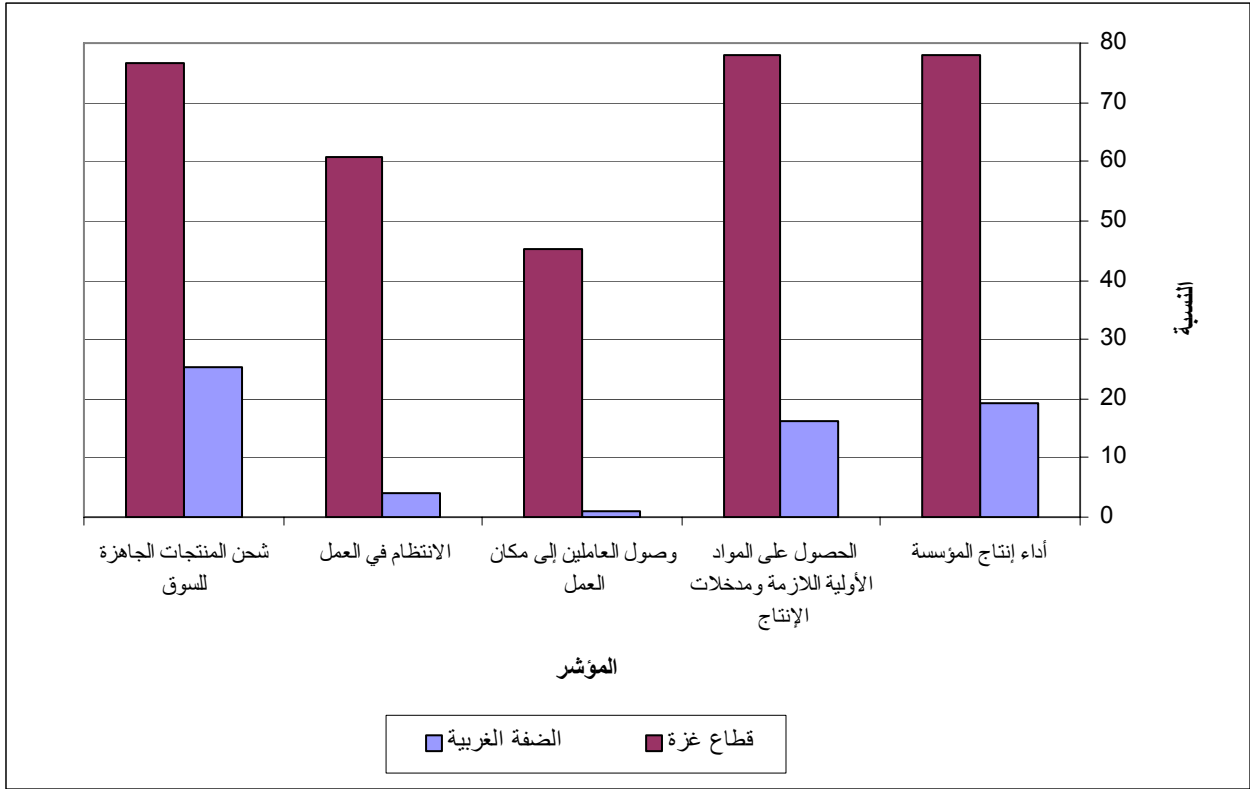
%32.9

%14.6

:
 / %88.1
 .(%91.3 %75.0)
 / %74.8
 %16.7) %25.2 (%73.1 %83.3)
 .(%26.9
 :
 / %16.2
 %78.7 (%5.7 %59.4) 2008
 .(%40.6 %87.9)
 - /
 / %32.8 -(2008)
 %33.2 %15.2 2008
 .2008 /
 ()
 %41.6
 .(%54.7 %38.5)
 %22.3
 .(%53.1 %14.8)
 / %43.9
 %41.3)
 .(%54.7

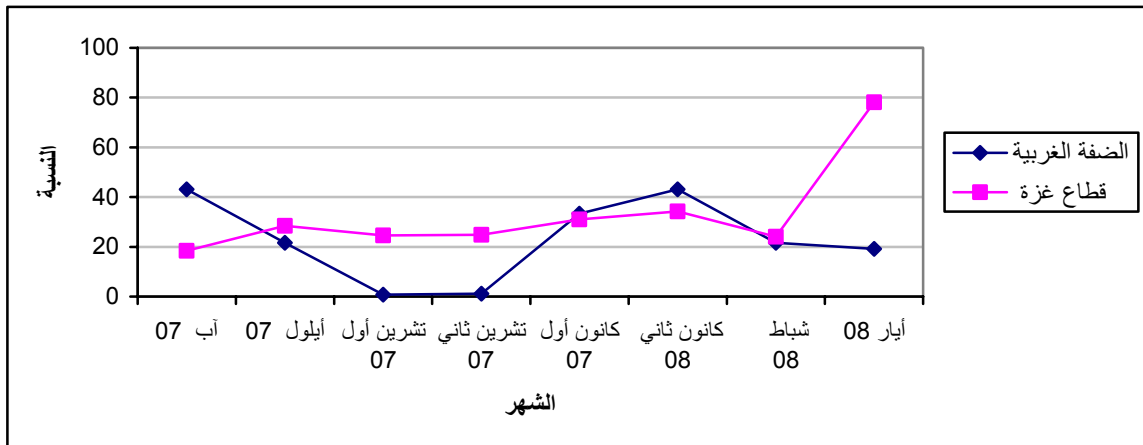
2008

:1



(2008)

:2



2008

Table 1-1: Percentage of Industrial Establishments Encountered Worse Situation During the Reference Month Compared to that before the Reference Month for the Main Indicators in the Palestinian Territory 2008

Indicator	Reference Month									
	2008					2007				
	May	April	Mar.	Feb.	Jan.	Dec.	Nov.	Oct.	Sep.	Aug.
Establishment performance in general	30.7	-	-	24.1	34.2	31.0	24.9	24.6	28.4	18.4
Obtaining needed raw materials and inputs	28.3	-	-	16.4	20.1	27.7	22.4	22.4	29.7	18.4
Problems of employees reaching place of work	9.8	-	-	5.7	2.2	2.4	2.5	2.2	7.6	6.9
Regularity of work	15.2	-	-	8.0	7.9	16.5	11.8	10.2	11.7	7.2
Transporting finished goods to market	35.3	-	-	23.7	23.0	28.0	22.6	19.5	19.7	18.4

(-) No Data Available

(-)

:2-1

2008 *

Table 1-2: Percentage of Industrial Establishments Encountered Worse Situation During the Reference Month Compared to that before the Reference Month for the Main Indicators in the West Bank* 2008

Indicator	Reference Month									
	2008					2007				
	May	April	Mar.	Feb.	Jan.	Dec.	Nov.	Oct.	Sep.	Aug.
Establishment performance in general	19.2	22.4	0.8	21.6	43.1	33.3	1.2	0.8	21.6	43.1
Obtaining needed raw materials and inputs	16.2	25.5	1.6	23.9	38.0	33.7	2.7	1.6	23.9	38.0
Problems of employees reaching place of work	1.1	19.3	0.8	16.5	49.2	29.5	3.9	0.8	16.5	49.2
Regularity of work	4.2	0.8	1.2	18.1	70.5	9.4	0.8	1.2	18.1	70.5
Transporting finished goods to market	25.2	21.8	0.4	0.4	90.2	7.1	2.0	0.4	0.4	90.2

* West Bank includes Jerusalem Governorate with J1

*

2008

:3-1

Table 1-3: Percentage of Industrial Establishments Encountered Worse Situation During the Reference Month Compared to that before the Reference Month for the Main Indicators in Gaza Strip 2008

Indicator	Reference Month									
	2008					2007				
	May	April	Mar.	Feb.	Jan.	Dec.	Nov.	Oct.	Sep.	Aug.
Establishment performance in general	78.1	-	-	24.1	34.2	31.0	24.9	24.6	28.4	18.4
Obtaining needed raw materials and inputs	78.2	-	-	16.4	20.1	27.7	22.4	22.4	29.7	18.4
Problems of employees reaching place of work	45.4	-	-	5.7	2.2	2.4	2.5	2.2	7.6	6.9
Regularity of work	60.9	-	-	8.0	7.9	16.5	11.8	10.2	11.7	7.2
Transporting finished goods to market	76.6	-	-	23.7	23.0	28.0	22.6	19.5	19.7	18.4

(-) No Data Available

(-)

Table 2-1: Percentage Distribution of Owners/ Managers of the Industrial Establishments According to Their Opinions for Main Indicators During May 2008 Compared with April 2008 in the Palestinian Territory

Problem	Total	Much Worse	Somewhat Worse	/ About the Same/ Unchanged	Somewhat Better	Much Better	
Establishment performance in general	100	8.5	22.2	45.6	22.8	0.9	
Production situation	100	10.0	27.7	34.4	26.4	1.5	
Employees productivity	100	8.8	22.2	43.8	23.1	2.1	
Obtaining needed raw materials and inputs	100	11.9	16.4	62.3	8.5	0.9	
Problems of employees reaching place of work	100	6.1	3.7	85.6	3.7	0.9	
Regularity of work	100	7.0	8.2	79.9	3.4	1.5	
Transporting finished goods to market	100	10.1	25.2	52.8	11.3	0.6	
Financial situations	100	7.9	21.0	55.6	15.5	0.0	
Banks credits & facilities	100	6.3	3.1	86.8	3.8	0.0	
Level of employment	100	8.5	19.8	62.6	9.1	0.0	
Value of sales	100	10.6	30.4	31.3	27.4	0.3	

2008

/

: :2-2

*

2008

Table 2-2: Percentage Distribution of Owners/ Managers of the Industrial Establishments According to Their Opinions for Main Indicators During May 2008 Compared with April 2008 in the West Bank

Problem	Total	Much Worse	Somewhat Worse	About the Same/ Unchanged	Somewhat Better	Much Better
Establishment performance in general	100	0.7	18.5	52.5	27.2	1.1
Production situation	100	2.3	25.3	38.8	31.7	1.9
Employees productivity	100	1.9	18.9	49.1	27.5	2.6
Obtaining needed raw materials and inputs	100	0.4	15.8	72.9	9.8	1.1
Problems of employees reaching place of work	100	0.0	1.1	93.6	4.2	1.1
Regularity of work	100	0.0	4.2	90.1	3.8	1.9
Transporting finished goods to market	100	3.4	21.8	60.3	13.7	0.8
Financial situations	100	1.1	17.4	62.9	18.6	0.0
Banks credits & facilities	100	0.0	2.7	92.6	4.7	0.0
Level of employment	100	2.7	14.0	72.3	11.0	0.0
Value of sales	100	3.8	27.9	34.7	33.2	0.4

* West Bank includes Jerusalem Governorate with J1

*

2008

Table 2-3: : Percentage Distribution of Owners/ Managers of the Industrial Establishments According to Their Opinions for Main Indicators During May 2008 Compared with April 2008 in Gaza Strip

Problem	Total	Much Worse	Somewhat Worse	/ About the Same/ Unchanged	Somewhat Better	Much Better	
Establishment performance in general	100	40.6	37.5	17.2	4.7	0.0	
Production situation	100	42.2	37.5	15.6	4.7	0.0	
Employees productivity	100	37.5	35.9	21.9	4.7	0.0	
Obtaining needed raw materials and inputs	100	59.4	18.8	18.7	3.1	0.0	
Problems of employees reaching place of work	100	31.3	14.1	53.0	1.6	0.0	
Regularity of work	100	35.9	25.0	37.5	1.6	0.0	
Transporting finished goods to market	100	37.5	39.1	21.8	1.6	0.0	
Financial situations	100	35.9	35.9	25.1	3.1	0.0	
Banks credits & facilities	100	31.3	4.7	64.0	0.0	0.0	
Level of employment	100	32.8	43.8	21.8	1.6	0.0	
Value of sales	100	39.1	40.6	17.2	3.1	0.0	

Table 3: Percentage of Industrial Establishments Encountered Worse Situation During the Reference Month (May 2008) Compared to that before the Reference Month for the Main Indicators by Region

Problem	Gaza Strip	* West Bank*	Palestinian Territory
Employees productivity	73.4	20.8	31.0
Financial situations	71.8	18.5	28.9
Banks credits & facilities	31.0	2.7	9.4
Level of employment	76.6	16.7	28.3
Value of sales	79.7	31.7	41.0

* West Bank includes Jerusalem Governorate with J1

*

/

:4

2008

Table 4: Percentage Distribution of Owners/Managers of the Industrial Establishments According to the Reasons for Sales Level Stability or Decline by Region During May 2008

Reason	Gaza Strip	* West Bank*	Palestinian Territory
Decrease in demand	2.0	2.4	2.3
Difficulties in exporting finished goods	0.0	0.0	0.0
Decline in the consumer purchasing power	9.8	32.9	24.1
Product Marketing Obstacles	0.0	9.8	6.0
Competence product	1.9	4.9	3.8
Seasonally related	0.0	15.9	9.7
Military check points/ israeli actions/ closures	86.3	14.6	42.1
Other	0.0	19.5	12.0
Total	100	100	100

* West Bank includes Jerusalem Governorate with J1

*

2008

:5

Table 5: Percentage Distribution of the Industrial Establishments According to the Employment Mobility During May 2008 by Region

Employment Mobility	Gaza Strip	* West Bank*	Palestinian Territory
Hiring employees	0.0	6.4	5.1
Firing employees	59.4	5.7	16.2
No change	40.6	87.9	78.7
Total	100	100	100

* West Bank includes Jerusalem Governorate with J1

*

2008

/

:6

Table 6: Percentage Distribution of the Existing of Competence of the Main Product According to the Owners\ Managers of the Industrial Establishments During May 2008 by Region

Competence existence	Gaza Strip	* West Bank*	Palestinian Territory
There is competition	75.0	91.3	88.1
There is no competition	25.0	8.7	11.9
Total	100	100	100

* West Bank includes Jerusalem Governorate with J1

*

2008

/

:7

Table 7: Percentage Distribution of the Type of Competence According to the Owners\ Managers of the Industrial Establishments During May 2008 by Region

Type of competence	Gaza Strip	* West Bank*	Palestinian Territory
Local	83.3	73.1	74.8
Foreign	16.7	26.9	25.2
Total	100	100	100

* West Bank includes Jerusalem Governorate with J1

*

Table 8: Expectations of Owners/ Managers of the Industrial Establishments for the Month that Follow the Reference Month Compared With the Reference (May, 2008) Month for the Main Indicators by Region

Indicator	Reference Month										
	2008					2007					
	May	April	Mar.	Feb.	Jan.	Dec.	Nov.	Oct.	Sep.	Aug.	
Percentage of who are expecting better establishment situation											
Palestinian Territory	32.8	-	-	31.8	28.7	18.2	18.8	22.1	19.4	30.6	
West Bank*	29.4	36.0	35.4	31.5	26.2	19.5	22.2	22.1	19.4	31.4	*
Gaza Strip	46.9	-	-	34.1	56.5	13.3	4.9	22.6	19.2	27.8	
Percentage of who are expecting higher employment level											
Palestinian Territory	15.2	-	-	7.3	6.9	5.4	5.4	9.6	9.0	13.9	
West Bank*	8.0	10.3	10.5	5.1	4.7	5.1	6.0	9.3	8.0	14.0	*
Gaza Strip	45.4	-	-	20.5	30.4	6.8	3.3	13.2	13.5	13.9	
Percentage of who are expecting higher sales volume											
Palestinian Territory	33.2	-	-	33.3	31.2	19.9	19.1	23.4	20.8	30.9	
West Bank*	29.9	38.9	37.1	33.1	28.9	21.2	22.2	24.1	21.1	31.8	*
Gaza Strip	46.9	-	-	34.1	56.5	15.0	6.6	22.6	19.2	27.8	

(-) No Data Available

(-)

* West Bank includes Jerusalem Governorate with J1

*

Table 9: Expectations of Owners/ Managers of the Industrial Establishments for the Six Months that Follow the Reference Month Compared With the Reference Month (May, 2008) for the Main Indicators by Region

Indicator	Reference Month										
	2008					2007					
	May	April	Mar.	Feb.	Jan.	Dec.	Nov.	Oct.	Sep.	Aug.	
Percentage of who are expecting better establishment situation											
Palestinian Territory	41.6	-	-	61.7	59.6	33.5	36.0	37.4	41.5	40.3	
West Bank*	38.5	49.4	57.2	62.2	58.2	36.5	33.3	36.3	41.8	42.9	*
Gaza Strip	54.7	-	-	58.4	78.9	20.3	52.4	43.2	39.7	32.0	
Percentage of who are expecting higher employment level											
Palestinian Territory	22.3	-	-	25.2	22.7	13.2	21.6	16.4	21.5	20.3	
West Bank*	14.8	15.8	22.9	23.2	20.5	11.9	19.0	14.3	19.8	18.8	*
Gaza Strip	53.1	-	-	38.9	52.6	18.6	38.1	27.3	28.6	25.3	
Percentage of who are expecting higher sales volume											
Palestinian Territory	43.9	-	-	67.6	64.1	36.5	38.6	38.5	42.7	40.6	
West Bank*	41.3	53.8	59.8	68.9	63.0	39.8	36.4	37.5	43.4	43.7	*
Gaza Strip	54.7	-	-	58.4	78.9	22.0	52.4	43.2	39.7	30.7	

(-) No Data Available

(-)

* West Bank includes Jerusalem Governorate with J1

*

Table 10: Expectations of Owners/ Managers of the Industrial Establishments about Better Expectations for their Establishments for the Month that Follow the Reference Month (May, 2008) Compared With the Reference Month by Region

Indicator	Gaza Strip	* West Bank*	Palestinian Territory	
Establishment performance in general	46.9	23.4	28.0	
Employees productivity	46.9	23.5	28.0	
Obtaining needed raw materials and inputs	46.9	7.2	14.9	
Problems of employees reaching place of work	28.1	5.0	9.4	
Regularity of work	45.4	9.1	16.1	
Transporting finished goods to market	46.9	11.1	18.1	
Financial situations	48.5	11.4	18.6	
Banks credits & facilities	20.3	3.5	6.9	

* West Bank includes Jerusalem Governorate with J1

*

(2008)

/ :11

Table 11: Expectations of Owners/ Managers of the Industrial Establishments about Better Expectations for their Establishments for the Six Months that Follow the Reference Month (May,2008) Compared With the Reference Month for the Main Indicators by Region

Indicator	Gaza Strip	* West Bank*	Palestinian Territory	
Establishment performance in general	54.7	29.0	34.0	
Employees productivity	54.7	27.7	32.9	
Obtaining needed raw materials and inputs	53.2	11.0	19.2	
Problems of employees reaching place of work	29.7	4.5	9.4	
Regularity of work	53.2	11.7	19.8	
Transporting finished goods to market	54.7	17.5	24.8	
Financial situations	53.2	17.0	24.1	
Banks credits & facilities	25.0	4.7	8.7	

* West Bank includes Jerusalem Governorate with J1

*

Table 12-1: Percentage Distribution of Owners/ Managers of the Industrial Establishments According to Their Opinions for Main Indicators for the Month that Follow the Reference Month (May, 2008) Compared With the Reference Month in the Palestinian Territory

Problem	Total	Much Worse	Somewhat Worse	/ About the Same/ Unchanged	Somewhat Better	Much Better	
Establishment performance in general	100	5.8	18.2	48.0	27.7	0.3	
Production situation	100	5.8	18.5	42.9	32.5	0.3	
Volume of sales	100	5.5	20.1	41.2	32.6	0.6	
Employees productivity	100	5.5	14.3	52.2	27.4	0.6	
Obtaining needed raw materials and inputs	100	5.8	11.9	67.4	14.6	0.3	
Problems of employees reaching place of work	100	5.5	1.2	83.9	8.8	0.6	
Regularity of work	100	6.1	8.5	69.3	15.5	0.6	
Level of employment	100	7.3	7.9	69.6	14.9	0.3	
Transporting finished goods to market	100	8.6	11.3	62.0	17.8	0.3	
Financial situations	100	7.6	13.1	60.7	18.3	0.3	
Banks credits & facilities	100	5.0	2.5	85.6	6.9	0.0	

*

(2008)

/

:2-12

Table 12-2: Percentage Distribution of Owners/ Managers of the Industrial Establishments According to Their Opinions for Main Indicators for the Month that Follow the Reference Month (May, 2008) Compared With the Reference Month in the West Bank*

Problem	Total	Much Worse	Somewhat Worse	About the Same/ Unchanged	Somewhat Better	Much Better
Establishment performance in general	100	0.4	19.6	56.6	23.4	0.0
Production situation	100	0.4	20.0	50.2	29.4	0.0
Volume of sales	100	0.4	22.0	47.7	29.5	0.4
Employees productivity	100	0.4	15.2	60.9	23.1	0.4
Obtaining needed raw materials and inputs	100	0.0	11.7	81.1	7.2	0.0
Problems of employees reaching place of work	100	0.4	0.8	93.8	4.2	0.8
Regularity of work	100	0.4	8.0	82.5	8.7	0.4
Level of employment	100	1.9	7.2	82.9	8.0	0.0
Transporting finished goods to market	100	3.4	11.1	74.4	11.1	0.0
Financial situations	100	2.3	13.6	72.7	11.4	0.0
Banks credits & facilities	100	0.0	2.4	94.1	3.5	0.0

* West Bank includes Jerusalem Governorate with J1

*

(2008)

/

:3-12

Table 12-3: Percentage Distribution of Owners/ Managers of the Industrial Establishments According to Their Opinions for Main Indicators for the Month that Follow the Reference Month (May, 2007) Compared With the Reference Month in Gaza Strip

Problem	Total	Much Worse	Somewhat Worse	/ About the Same/ Unchanged	Somewhat Better	Much Better	
Establishment performance in general	100	28.1	12.5	12.5	45.3	1.6	
Production situation	100	28.1	12.5	12.5	45.3	1.6	
Volume of sales	100	26.6	12.5	14.0	45.3	1.6	
Employees productivity	100	26.6	10.9	15.6	45.3	1.6	
Obtaining needed raw materials and inputs	100	29.7	12.5	10.9	45.3	1.6	
Problems of employees reaching place of work	100	26.6	3.1	42.2	28.1	0.0	
Regularity of work	100	29.7	10.9	14.0	43.8	1.6	
Level of employment	100	29.7	10.9	14.0	43.8	1.6	
Transporting finished goods to market	100	29.7	12.5	10.9	45.3	1.6	
Financial situations	100	29.7	10.9	10.9	46.9	1.6	
Banks credits & facilities	100	25.0	3.1	51.6	20.3	0.0	

Table 13-1: Percentage Distribution of Owners/ Managers of the Industrial Establishments According to Their Opinions for Main Indicators During the Next Six Months Compared with Reference Month (May, 2008) in the Palestinian Territory

Problem	Total	Much Worse	Somewhat Worse	/ About the Same/ Unchanged	Somewhat Better	Much Better	
Establishment performance in general	100	6.4	16.7	42.9	32.5	1.5	
Production situation	100	6.7	21.9	29.8	39.8	1.8	
Volume of sales	100	7.0	22.0	27.1	42.1	1.8	
Employees productivity	100	5.5	19.8	41.8	31.4	1.5	
Obtaining needed raw materials and inputs	100	6.1	11.0	63.7	17.7	1.5	
Problems of employees reaching place of work	100	5.5	1.2	83.9	8.5	0.9	
Regularity of work	100	7.0	7.6	65.6	18.0	1.8	
Level of employment	100	6.4	8.2	63.2	20.7	1.5	
Transporting finished goods to market	100	8.9	8.9	57.4	23.6	1.2	
Financial situations	100	7.9	14.0	54.0	22.9	1.2	
Banks credits & facilities	100	4.7	2.2	84.4	7.8	0.9	

*

(2008)

/

:2-13

Table 13-2: Percentage Distribution of Owners/ Managers of the Industrial Establishments According to Their Opinions for Main Indicators During the Next Six Months Compared with Reference Month (May, 2008) in the West Bank*

Problem	Total	Much Worse	Somewhat Worse	About the Same/ Unchanged	Somewhat Better	Much Better
Establishment performance in general	100	1.1	18.5	51.4	27.5	1.5
Production situation	100	1.5	24.9	35.1	36.6	1.9
Volume of sales	100	2.3	25.0	31.4	39.4	1.9
Employees productivity	100	0.4	22.3	49.7	26.1	1.5
Obtaining needed raw materials and inputs	100	0.8	11.0	77.2	9.5	1.5
Problems of employees reaching place of work	100	0.8	0.4	94.3	3.4	1.1
Regularity of work	100	1.9	7.2	79.2	9.8	1.9
Level of employment	100	1.1	8.0	76.1	13.3	1.5
Transporting finished goods to market	100	4.2	8.8	69.5	16.4	1.1
Financial situations	100	3.0	15.2	64.8	15.9	1.1
Banks credits & facilities	100	0.0	2.4	92.9	3.5	1.2

* West Bank includes Jerusalem Governorate with J1

*

Table 13-3: Percentage Distribution of Owners/ Managers of the Industrial Establishments According to Their Opinions for Main Indicators During the Next Six Months Comparing with Reference Month (May, 2008) in Gaza Strip

Problem	Total	Much Worse	Somewhat Worse	/ About the Same/ Unchanged	Somewhat Better	Much Better	
Establishment performance in general	100	28.1	9.4	7.8	53.1	1.6	
Production situation	100	28.1	9.4	7.8	53.1	1.6	
Volume of sales	100	26.6	9.4	9.3	53.1	1.6	
Employees productivity	100	26.6	9.4	9.3	53.1	1.6	
Obtaining needed raw materials and inputs	100	28.1	10.9	7.8	51.6	1.6	
Problems of employees reaching place of work	100	25.0	4.7	40.6	29.7	0.0	
Regularity of work	100	28.1	9.4	9.3	51.6	1.6	
Level of employment	100	28.1	9.4	9.3	51.6	1.6	
Transporting finished goods to market	100	28.1	9.4	7.8	53.1	1.6	
Financial situations	100	28.1	9.4	9.3	51.6	1.6	
Banks credits & facilities	100	23.4	1.6	50.0	25.0	0.0	