



**Palestinian National Authority
Palestinian Central Bureau of Statistics**

**Survey of the Perceptions of the Owners / Managers of
Industrial Enterprises Regarding the Economic Situation,
May 2009**

Press Release on the Survey Results

June, 2009

PAGE NUMBERS OF ENGLISH TEXT ARE PRINTED IN SQUARE BRACKETS.
TABLES ARE PRINTED IN THE ARABIC ORDER (FROM RIGHT TO LEFT).



This document is prepared in accordance with the standard procedures stated in the Code of Practice for Palestine Official Statistics 2006

© June, 2009

All rights reserved.

Suggested Citation:

Palestinian Central Bureau of Statistics, 2009. *Survey of the Perceptions of the Owners / Managers of Industrial Enterprises Regarding the Economic Situation, May 2009. Press Release on the survey's results.*

Ramallah- Palestine

All correspondence should be directed to:
Palestinian Central Bureau of Statistics.
P.O. Box 1647, Ramallah - Palestine.

Tel: (972/970) 2 242 6340

Fax: (972/970) 2 242 6343

E-mail: diwan@pcbs.gov.ps

Web-site: <http://www.pcbs.gov.ps>

Table of Contents

Subject	Page
Press Release: Main Findings of the Survey of the Perceptions of the Owners/Managers of Industrial Enterprises Regarding the Economic Situation, May 2009	[5]
Tables	9

It is worth mentioning that the data was collected during this month under the obstacles of data collection and entry in Gaza Strip, so the coverage and publishing level will be for the West Bank only.

Press Release

Main Findings of the Survey of the Perceptions of the Owners/Managers of Industrial Enterprises Regarding the Economic Situation, May 2009

The following statement presents the basic findings of the 51th round on the perceptions of the owners/managers of industrial enterprises regarding the economic situation for May 2009. The round was conducted during the period 03-23/06/2009, using May 2009 as the reference month. The aim of the survey is to observe and monitor the trends of the opinions of the owners/managers of the industrial enterprises. The sample size was 358 industrial enterprises in the West Bank, and 55 industrial enterprises in Gaza Strip. A two-stage sample was designed for this survey: in the first stage, the industrial survey 2007 was used as a sampling frame for the survey, while in the second stage all the industrial enterprises constituting approximately 70% of the total industrial production, were selected.

It is worth mentioning that the data was collected during this month under the obstacles of data collection and entry in Gaza Strip, so the coverage and publishing level will be for the West Bank only.

Performance of industrial enterprises in May 2009 compared with April 2009

According to 35.1% of the owners/managers of the industrial enterprises in the West Bank, the production performance of their enterprises during May 2009 improved compared with April 2009.

According to the results, 30.2% of the owners/managers reported that their enterprise's financial situation improved in the West Bank, while 2.6% reported that banks loans were more accessible during May 2009.

Challenges

Drop in sales level

50.6% of the owners/managers of industrial enterprises in the West Bank indicated that the main reason for the drop in the sales level was the decrease in the consumer purchasing power, while 11.7% of the owners/managers of industrial enterprises indicated that the main reason was the decrease on the demand of the enterprise product.

Local and external competition

In the West Bank, 94.0% of the owners/managers of the industrial enterprises indicated that their enterprise's main product faced local or external competition.

According to 54.2% of the owners/managers of the industrial enterprises in the West Bank, indicated that the main product faced local competition; where as 19.4% of the owners/managers of the industrial enterprises in the West Bank indicated that their main product faced external competition. On the other hand 26.4% of the owners/managers of the industrial enterprises in the West Bank indicated that their main product faced both local and external competition.

Employment

6.3 % of the owners/managers of the industrial enterprises in the West Bank fired workers in May 2009; however, 81.4% of the owners/managers of the industrial enterprises in the West Bank stated that there was no change in the number of workers.

3. Expectations

3-1 Short term

The expectations of the owners/ managers of the active industrial enterprises in the short term, i.e. after one month of the reference month (May 2009), shows that 44.1% in the West Bank expected improvement in their production in general.

The expectations in the West Bank concerning employment in June 2009 indicate pessimism since only 17.5% expected increase during June 2009.

The results show that 42.7% of the owners /managers of the industrial enterprises in the West Bank expected sales to increase during June 2009.

3-2 Medium term

The expectations of the owners /managers of the active industrial enterprises in the medium term (in the next six months) were as follows: 49.0% business people in the West Bank expected improvement in production in the next six months.

According to expectations concerning employment in the West Bank, 24.5% expect increase in employment.

Sales during the next six months will rise, according to the expectations of 48.4% of the owners and managers of the active industrial enterprises in the West Bank.

Figure 1: Percentage of Industrial Enterprises Owners / Managers who Encountered Improvement in Economic Conditions during May 2009 Compared to the Previous Month for the Main Indicators in the West Bank

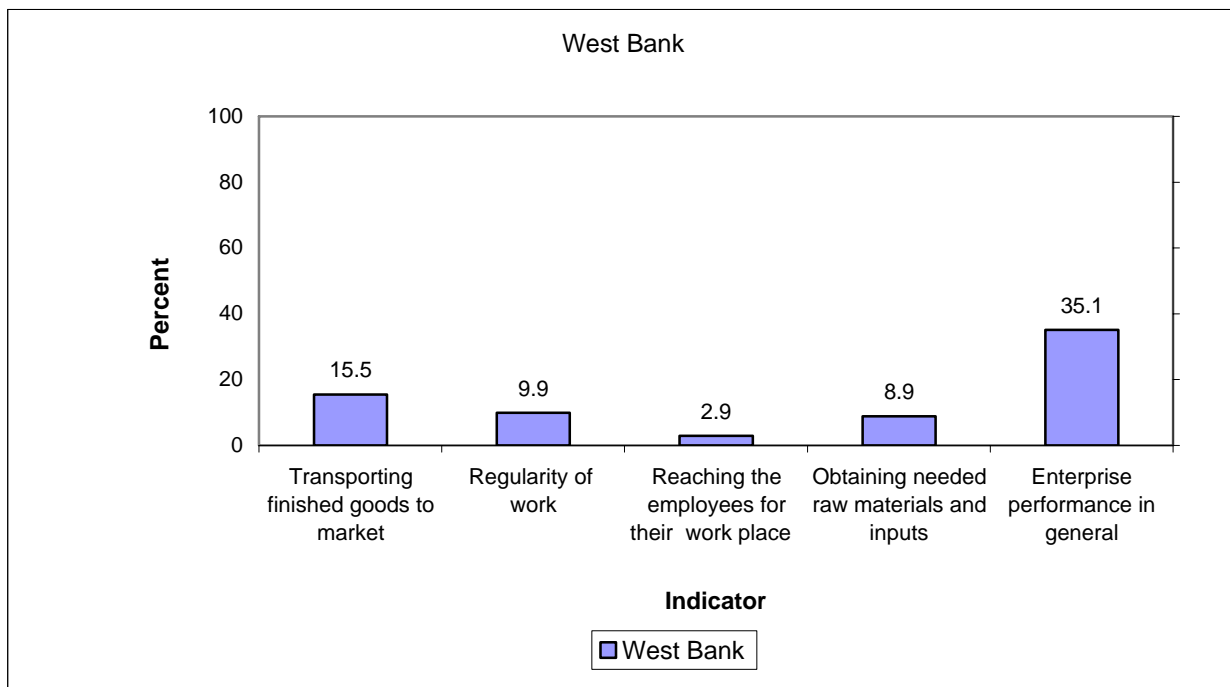
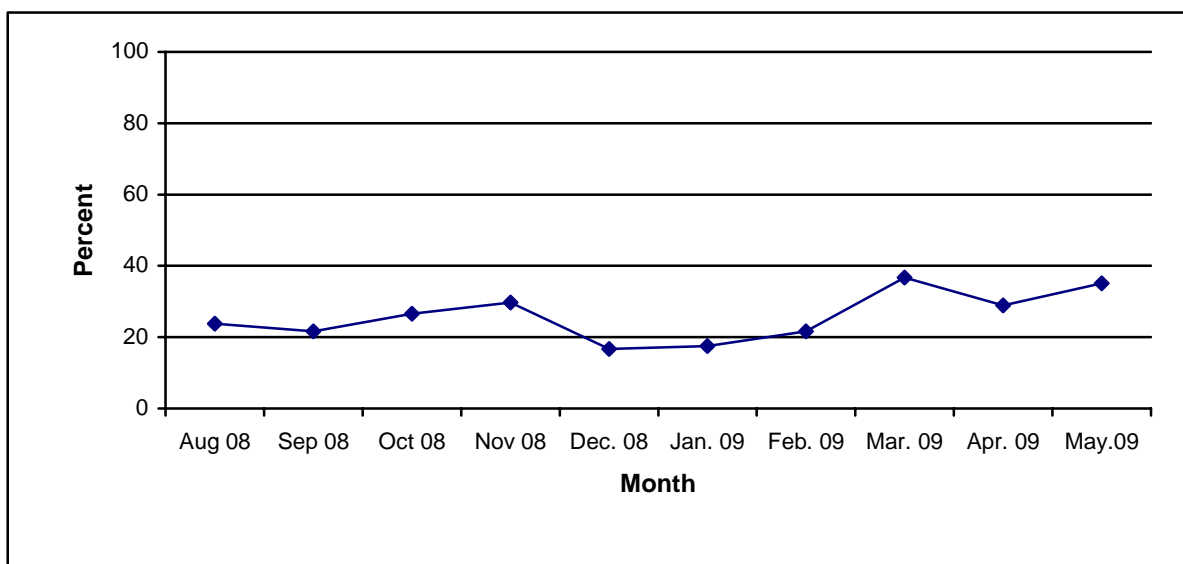


Figure 2: Trends of Enterprises Witnessed an Improved Situation in Production Performance During (August 08-May 09) Compared to the Previous Month by region in the West Bank



Data Collection and processing of this document has been produced with the financial assistance of the European Union. The contents of this document are the sole responsibility of the PCBS.

:1-1

2009

Table 1-1: Percentage of the Industrial Enterprises Witnessed an Improved Situation During the Reference Month Compared to that before the Reference Month for the Main Indicators in the Palestinian Territory 2009

Indicator	Reference Month									
	2009					2008				
	أيار May.	نيسان Apr.	آذار Mar.	شباط Feb.	كانون ثاني Jan.	كانون أول Dec.	تشرين ثاني Nov.	تشرين أول Oct.	Sept.	Aug.
Enterprise performance in general	-	28.7	34.7	26.4	16.1	-	25.0	24.8	21.0	22.2
Obtaining needed raw materials and inputs	-	6.9	13.1	8.5	9.9	-	10.6	12.2	10.5	12.4
Reaching the employees for their work place	-	2.1	6.9	9.1	4.0	-	3.5	6.1	63.	3.9
Regularity of work	-	6.0	10.7	10.0	5.7	-	6.8	9.8	7.3	7.8
Transporting finished goods to market	-	11.2	11.6	11.8	7.1	-	9.2	8.5	7.1	8.3

(-) No Data Available

(-)

:2-1

2009

Table 1-2: Percentage of Industrial Enterprises Witnessed an Improved Situation During the Reference Month Compared to that before the Reference Month for the Main Indicators in the West Bank 2009

Indicator	Reference Month									
	2009					2008				
	أيار May.	نيسان Apr.	آذار Mar.	شباط Feb.	كانون ثاني Jan.	كانون أول Dec.	تشرين ثاني Nov.	تشرين أول Oct.	Sept.	Aug.
Enterprise performance in general	35.1	28.9	36.7	21.6	17.4	16.7	29.7	26.6	21.6	23.8
Obtaining needed raw materials and inputs	8.9	6.7	13.5	7.0	10.7	7.0	11.7	10.6	88.	10.6
Reaching the employees for their work place	2.9	2.2	7.1	3.8	4.3	3.1	4.4	6.5	5.0	4.8
Regularity of work	9.9	5.1	11.5	5.1	6.1	3.5	7.2	8.9	6.4	5.2
Transporting finished goods to market	15.5	11.3	12.1	7.6	7.7	5.4	11.4	8.2	8.2	10.3

2009

Table 1-3: Percentage of Industrial Enterprises Witnessed an Improved Situation During the Reference Month Compared to that before the Reference Month for the Main Indicators in Gaza Strip 2009

Indicator	Reference Month									
	2009					2008				
	أيار May.	نيسان Apr.	آذار Mar.	شباط Feb.	كانون ثاني Jan.	كانون أول Dec.	تشرين ثاني Nov.	تشرين أول Oct.	Sept.	Aug.
Enterprise performance in general	-	26.3	8.7	84.6	0.0	-	7.7	18.8	19.2	18.4
Obtaining needed raw materials and inputs	-	10.6	8.7	26.9	0.0	-	6.4	17.7	115.	16.7
Reaching the employees for their work place	-	:	4.3	73.1	0.0	-	0.0	4.7	0.0	1.8
Regularity of work	-	21.1	0.0	69.2	0.0	-	5.1	13.0	10.1	114.
Transporting finished goods to market	-	10.6	4.3	61.6	0.0	-	1.3	9.4	4.0	3.5

(-) No Data Available

(-)

(:) No Observations in the Sample

(:)

2009

2009

/

:1-2

Table 2-1: Percentage Distribution of Owners/ Managers of the Industrial Enterprises According to Their Opinions of Main Indicators During May 2009 Compared to April 2009 in the Palestinian Territory

Problem	Total	Not Exist	Much Worse	Somewhat Worse	/ About the Same/ Unchanged	Somewhat Better	Much Better
Enterprise performance in general	-	-	-	-	-	-	-
Production situation	-	-	-	-	-	-	-
Employees productivity	-	-	-	-	-	-	-
Obtaining needed raw materials and inputs	-	-	-	-	-	-	-
Reaching the employees for their work place	-	-	-	-	-	-	-
Regularity of work	-	-	-	-	-	-	-
Transporting finished goods to market	-	-	-	-	-	-	-
Financial situations	-	-	-	-	-	-	-
Banks credits & facilities	-	-	-	-	-	-	-
Level of employment	-	-	-	-	-	-	-
Value of sales	-	-	-	-	-	-	-

(-) No Data Available

(-)

Table 2-2: Percentage Distribution of Owners/ Managers of the Industrial Enterprises According to Their Opinions of Main Indicators During May 2009 Compared to April 2009 in the West Bank

Problem	Total	Not Exist	Much Worse	Somewhat Worse	/ About the Same/ Unchanged	Somewhat Better	Much Better
Enterprise performance in general	100	:	1.7	19.5	43.7	32.8	2.3
Production situation	100	:	2.0	19.2	42.4	34.1	2.3
Employees productivity	100	:	1.0	15.6	52.9	28.8	1.7
Obtaining needed raw materials and inputs	100	:	1.0	4.7	85.4	8.6	0.3
Reaching the employees for their work place	100	:	:	0.7	96.4	2.6	0.3
Regularity of work	100	:	:	5.0	85.1	9.6	0.3
Transporting finished goods to market	100	:	:	12.3	72.2	15.2	0.3
Financial situations	100	:	1.3	17.9	50.6	28.5	1.7
Banks credits & facilities	100	34.1	:	2.0	61.3	2.6	:
Level of employment	100	:	:	9.3	75.4	14.6	0.7
Value of sales	100	0.3	1.7	23.8	38.5	33.4	2.3

(:) No Observations in the Sample

(:)

Table 2-3: Percentage Distribution of Owners/ Managers of the Industrial Enterprises According to Their Opinions of Main Indicators During May 2009 Compared to April 2009 in Gaza Strip

Problem	Total	Not Exist	Much Worse	Somewhat Worse	/ About the Same/ Unchanged	Somewhat Better	Much Better	
Enterprise performance in general	-	-	-	-	-	-	-	
Production situation	-	-	-	-	-	-	-	
Employees productivity	-	-	-	-	-	-	-	
Obtaining needed raw materials and inputs	-	-	-	-	-	-	-	
Reaching the employees for their work place	-	-	-	-	-	-	-	
Regularity of work	-	-	-	-	-	-	-	
Transporting finished goods to market	-	-	-	-	-	-	-	
Financial situations	-	-	-	-	-	-	-	
Banks credits & facilities	-	-	-	-	-	-	-	
Level of employment	-	-	-	-	-	-	-	
Value of sales	-	-	-	-	-	-	-	

(-) No Data Available

(-)

Table 3: Percentage of Industrial Enterprises Witnessed an Improved Situation During the Reference Month (May 2009) Compared to that before the Reference Month for the Main Indicators by Region

Indicator	Gaza Strip	West Bank	Palestinian Territory	
Employees productivity	-	30.5	-	
Financial situations	-	30.2	-	
Banks credits & facilities	-	2.6	-	
Level of employment	-	15.3	-	
Value of sales	-	35.7	-	

(-) No Data Available

(-)

/

:4

2009

Table 4: Percentage Distribution of Owners/Managers of the Active Industrial Enterprises According to the Reasons for Sales Level Stability or Decline by Region During May 2009

Reason	Gaza Strip	West Bank	Palestinian Territory	
Decrease in demand	-	11.7	-	
Difficulties in exporting finished goods	-	6.5	-	
Decline in the consumer purchasing power	-	50.6	-	
Product Marketing Obstacles	-	1.3	-	()
Competence product	-	5.2	-	
Seasonally related	-	3.9	-	
Military check points/ israeli actions/ closures	-	6.5	-	/ /
Other	-	14.3	-	
Total	-	100	-	

(-) No Data Available

(-)

2009

:5

Table 5: Percentage Distribution of the Active Industrial Enterprises According to the Employment Mobility During May 2009 by Region

Employment Mobility	Gaza Strip	West Bank	Palestinian Territory	
Hiring employees	-	12.3	-	
Firing employees	-	6.3	-	
No change	-	81.4	-	
Total	-	100	-	

(-) No Data Available

(-)

2009

/

:6

Table 6: Percentage Distribution of the Existing of Competition Against the Main Product According to the Owners\ Managers of the Active Industrial Enterprises During May 2009 by Region

Competence existence	Gaza Strip	West Bank	Palestinian Territory	
There is competition	-	94.0	-	
There is no competition	-	6.0	-	
Total	-	100	-	

(-) No Data Available

(-)

2009

/

:7

Table 7: Percentage Distribution of the Type of Competition According to the Owners\ Managers of the Active Industrial Enterprises During May 2009 by Region

Type of competence	Gaza Strip	West Bank	Palestinian Territory	
Local	-	54.2	-	
Foreign	-	19.4	-	
Both	-	26.4	-	
Total	-	100	-	

(-) No Data Available

(-)

Table 8: Expectations of Owners/ Managers of the Active Industrial Enterprises for the Month that Follows the Reference Month Compared to the Reference Month (May, 2009) for the Main Indicators by Region

Indicator	Reference Month									
	2009					2008				
	أيار May.	نيسان Apr.	آذار Mar.	شباط Feb.	كانون ثاني Jan.	كانون أول Dec.	تشرين ثاني Nov.	تشرين أول Oct.	Sept.	Aug.
Percentage of who are expecting better Enterprise situation										
Palestinian Territory	-	38.7	38.7	33.9	33.4	-	27.5	32.0	33.0	28.0
West Bank	44.1	39.4	38.8	37.1	29.1	26.5	27.3	30.7	29.8	21.6
Gaza Strip	-	26.3	39.1	65.3	85.1	-	28.9	39.2	46.8	58.9
Percentage of who are expecting higher employment level										
Palestinian Territory	-	13.3	12.8	18.1	17.0	-	12.0	10.0	116.	615.
West Bank	17.5	12.8	12.1	14.4	11.0	11.2	9.7	6.1	10.3	58.
Gaza Strip		21.1	21.7	61.5	88.8	-	28.9	31.4	40.3	50.0
Percentage of who are expecting higher sales volume										
Palestinian Territory	-	37.5	36.9	39.3	34.8	-	27.5	30.9	33.9	28.6
West Bank	42.7	38.5	36.4	37.1	29.7	28.1	27.3	29.4	30.9	22.3
Gaza Strip	-	21.1	43.4	65.3	96.3	-	28.9	39.2	46.8	58.9

(-) No Data Available

(-)

Table 9: Expectations of Owners/ Managers of the Active Industrial Enterprises for the Six Months that Follow the Reference Month Compared to the Reference Month (May, 2009) for the Main Indicators by Region

Indicator	Reference Month									
	2009					2008				
	أيار May.	نيسان Apr.	آذار Mar.	شباط Feb.	كانون ثاني Jan.	كانون أول Dec.	تشرين ثاني Nov.	تشرين أول Oct.	Sept.	Aug.
Percentage of who are expecting better Enterprise situation										
Palestinian Territory	-	53.2	39.1	56.8	62.3	-	44.9	41.2	38.8	39.9
West Bank	49.0	53.8	60.2	55.7	60.5	50.2	44.6	39.3	35.0	35.7
Gaza Strip	-	42.1	39.1	69.1	85.2	-	47.4	51.0	54.8	60.7
Percentage of who are expecting higher employment level										
Palestinian Territory	-	26.9	21.7	28.5	36.0	-	20.9	17.4	21.6	19.2
West Bank	24.5	27.0	28.8	25.5	31.6	18.9	18.0	12.7	14.8	12.9
Gaza Strip		26.3	26.1	65.4	88.9	-	42.1	43.2	50.0	50.0
Percentage of who are expecting higher sales volume										
Palestinian Territory	-	54.1	43.4	56.5	62.9	-	45.6	41.1	42.5	40.9
West Bank	48.4	54.8	58.8	55.8	60.2	52.7	45.3	39.3	39.5	36.8
Gaza Strip	-	42.1	43.4	65.4	96.3	-	47.4	51.0	54.8	60.7

(-) No Data Available

(-)

Table 10: Expectations of Owners/ Managers of the Active Industrial Enterprises about Better Expectations for their Enterprises for the Month that Follows the Reference Month (May, 2009) Compared to the Reference Month by Region

Indicator	Gaza Strip	West Bank	Palestinian Territory	
Enterprise performance in general	-	44.5	-	
Employees productivity	-	33.5	-	
Obtaining needed raw materials and inputs	-	10.6	-	
Reaching the employees for their work place	-	2.6	-	
Regularity of work	-	14.2	-	
Transporting finished goods to market	-	18.2	-	
Financial situations	-	33.8	-	
Banks credits & facilities	-	5.3	-	

(-) No Data Available

(-)

(2009)

/ :11

Table 11: Expectations of Owners/ Managers of the Active Industrial Enterprises about Better Expectations for their Enterprises for the Six Months that Follow the Reference Month (May, 2009) Compared to the Reference Month for the Main Indicators by Region

Indicator	Gaza Strip	West Bank	Palestinian Territory	
Enterprise performance in general	-	48.7	-	
Employees productivity	-	39.4	-	
Obtaining needed raw materials and inputs	-	16.9	-	
Reaching the employees for their work place	-	2.6	-	
Regularity of work	-	18.2	-	
Transporting finished goods to market	-	21.5	-	
Financial situations	-	36.1	-	
Banks credits & facilities	-	8.0	-	

(-) No Data Available

(-)

(2009)

/

:1-12

Table 12-1: Percentage Distribution of Owners/ Managers of the Active Industrial Enterprises According to Their Opinions of Main Indicators for the Month that Follows the Reference Month (May, 2009) Compared to the Reference Month in the Palestinian Territory

Indicator	Total	Not Exist	Much Worse	Somewhat Worse	/ About the Same/ Unchanged	Somewhat Better	Much Better	
Enterprise performance in general	-	-	-	-	-	-	-	-
Production situation	-	-	-	-	-	-	-	-
Volume of sales	-	-	-	-	-	-	-	-
Employees productivity	-	-	-	-	-	-	-	-
Obtaining needed raw materials and inputs	-	-	-	-	-	-	-	-
Reaching the employees for their work place	-	-	-	-	-	-	-	-
Regularity of work	-	-	-	-	-	-	-	-
Level of employment	-	-	-	-	-	-	-	-
Transporting finished goods to market	-	-	-	-	-	-	-	-
Financial situations	-	-	-	-	-	-	-	-
Banks credits & facilities	-	-	-	-	-	-	-	-

(-) No Data Available

(-)

(2009)

/

:2-12

Table 12-2: Percentage Distribution of Owners/ Managers of the Active Industrial Enterprises According to Their Opinions of Main Indicators for the Month that Follows the Reference Month (May, 2009) Compared to the Reference Month in the West Bank

Indicator	Total	Not Exist	Much Worse	Somewhat Worse	/ About the Same/ Unchanged	Somewhat Better	Much Better	
Enterprise performance in general	100	:	0.3	11.3	43.9	42.5	2.0	
Production situation	100	:	0.3	11.3	44.3	42.1	2.0	
Volume of sales	100	:	0.3	11.9	45.1	40.7	2.0	
Employees productivity	100	:	:	8.3	58.2	31.8	1.7	
Obtaining needed raw materials and inputs	100	:	1.0	4.3	84.1	10.3	0.3	
Reaching the employees for their work place	100	:	:	0.3	97.1	2.3	0.3	
Regularity of work	100	:	0.7	5.0	80.1	13.9	0.3	
Level of employment	100	:	0.3	6.0	76.2	17.2	0.3	
Transporting finished goods to market	100	:	1.0	8.3	72.5	17.5	0.7	
Financial situations	100	0.7	1.0	10.9	53.6	31.8	2.0	
Banks credits & facilities	100	33.8	:	:	60.9	5.0	0.3	

(:) No Observations in the Sample

تعني لا يوجد مشاهدات بالعينة(:

Table 12-3: Percentage Distribution of Owners/ Managers of the Active Industrial Enterprises According to Their Opinions of Main Indicators for the Month that Follows the Reference Month (May, 2009) Compared to the Reference Month in Gaza Strip

Indicator	Total	Not Exist	Much Worse	Somewhat Worse	/ About the Same/ Unchanged	Somewhat Better	Much Better	
Enterprise performance in general	-	-	-	-	-	-	-	-
Production situation	-	-	-	-	-	-	-	-
Volume of sales	-	-	-	-	-	-	-	-
Employees productivity	-	-	-	-	-	-	-	-
Obtaining needed raw materials and inputs	-	-	-	-	-	-	-	-
Reaching the employees for their work place	-	-	-	-	-	-	-	-
Regularity of work	-	-	-	-	-	-	-	-
Level of employment	-	-	-	-	-	-	-	-
Transporting finished goods to market	-	-	-	-	-	-	-	-
Financial situations	-	-	-	-	-	-	-	-
Banks credits & facilities	-	-	-	-	-	-	-	-

(-) No Data Available

(-)

(2009)

/

:1-13

Table 13-1: Percentage Distribution of Owners/ Managers of the Active Industrial Enterprises According to Their Opinions of Main Indicators During the Next Six Months Compared to Reference Month (May, 2009) in the Palestinian Territory

Indicator	Total	Not Exist	Much Worse	Somewhat Worse	/ About the Same/ Unchanged	Somewhat Better	Much Better	
Enterprise performance in general	-	-	-	-	-	-	-	
Production situation	-	-	-	-	-	-	-	
Volume of sales	-	-	-	-	-	-	-	
Employees productivity	-	-	-	-	-	-	-	
Obtaining needed raw materials and inputs	-	-	-	-	-	-	-	
Reaching the employees for their work place	-	-	-	-	-	-	-	
Regularity of work	-	-	-	-	-	-	-	
Level of employment	-	-	-	-	-	-	-	
Transporting finished goods to market	-	-	-	-	-	-	-	
Financial situations	-	-	-	-	-	-	-	
Banks credits & facilities	-	-	-	-	-	-	-	

(-) No Data Available

(-)

Table 13-2: Percentage Distribution of Owners/ Managers of the Active Industrial Enterprises According to Their Opinions of Main Indicators During the Next Six Months Compared to Reference Month (May, 2009) in the West Bank

Indicator	Total	Not Exist	Much Worse	Somewhat Worse	/ About the Same/ Unchanged	Somewhat Better	Much Better	
Enterprise performance in general	100	:	1.0	13.9	36.4	44.7	4.0	
Production situation	100	:	1.0	14.2	35.8	45.0	4.0	
Volume of sales	100	:	1.3	14.9	35.4	44.4	4.0	
Employees productivity	100	:	0.3	10.3	50.0	37.7	1.7	
Obtaining needed raw materials and inputs	100	:	1.0	5.6	76.5	16.2	0.7	
Reaching the employees for their work place	100	:	0.3	0.3	96.8	2.3	0.3	
Regularity of work	100	:	1.0	6.3	74.5	17.5	0.7	
Level of employment	100	:	0.7	6.6	68.2	23.5	1.0	
Transporting finished goods to market	100	:	1.3	8.6	68.6	20.5	1.0	
Financial situations	100	0.7	1.0	11.6	50.6	32.1	4.0	
Banks credits & facilities	100	33.8	0.3	0.3	57.6	7.3	0.7	

(:) No Observations in the Sample

تعني لا يوجد مشاهدات بالعينة(:

Table 13-3: Percentage Distribution of Owners/ Managers of the Active Industrial Enterprises According to Their Opinions of Main Indicators During the Next Six Months Compared to Reference Month (May, 2009) in Gaza Strip

Indicator	Total	Not Exist	Much Worse	Somewhat Worse	/ About the Same/ Unchanged	Somewhat Better	Much Better	
Enterprise performance in general	-	-	-	-	-	-	-	-
Production situation	-	-	-	-	-	-	-	-
Volume of sales	-	-	-	-	-	-	-	-
Employees productivity	-	-	-	-	-	-	-	-
Obtaining needed raw materials and inputs	-	-	-	-	-	-	-	-
Reaching the employees for their work place	-	-	-	-	-	-	-	-
Regularity of work	-	-	-	-	-	-	-	-
Level of employment	-	-	-	-	-	-	-	-
Transporting finished goods to market	-	-	-	-	-	-	-	-
Financial situations	-	-	-	-	-	-	-	-
Banks credits & facilities	-	-	-	-	-	-	-	-

(-) No Data Available

(-)