

2011/03/23

" "

189

2011/03/23

/ 23

" "

1994

" "

" "

: 2010

2010

124

509

166

660

2010

		2010 ()	
81.6	615	502.1	
77.1	660	508.6	
71.9	468	336.5	
74.8	166	124.2	
66.1	596	393.7	
65.1	602	391.9	
70.8	518	366.7	

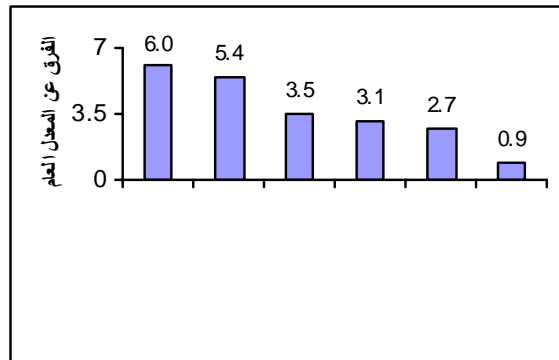
2010

2010

° 6.0

° 0.9

2010 (°)

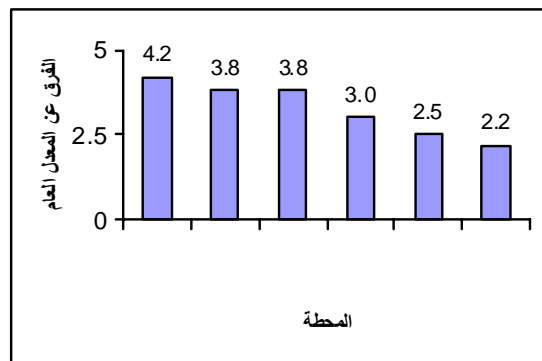


2010

° 4.2

° 2.2

2010 (°)



2000

2000

2 1,515

2006

2 33

2008

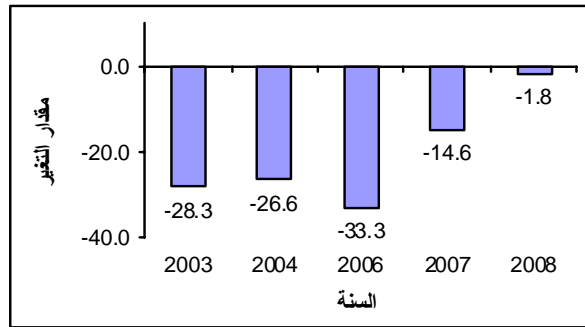
2 1513

2006

2 1,482

2008-2003

(²)



/3

60.5

2003

2009

/3

30.6

(/3)

