

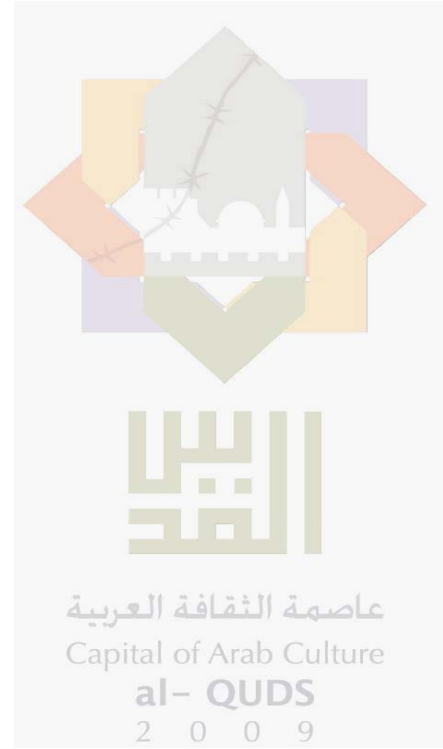
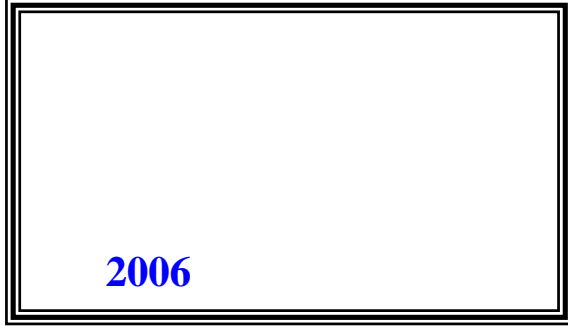


**2009**

/

**2009**

/



© 1430 - 2009.

:

/

2009.

2009

:

/

1647 . . -

: 2 242 6340 (970/972)

: 2 242 6343 (970/972)

: [diwan@pcbs.gov.ps](mailto:diwan@pcbs.gov.ps)

: <http://www.pcbs.gov.ps>

---

5

/

2009

9

/  
**2009**

/ 48  
/ 2009 2009/03/23-03  
55 358  
2007  
%70

.2007  
**2009** **2009**  
2009 %21.6 2009 2009  
2009 %17.4  
%84.6

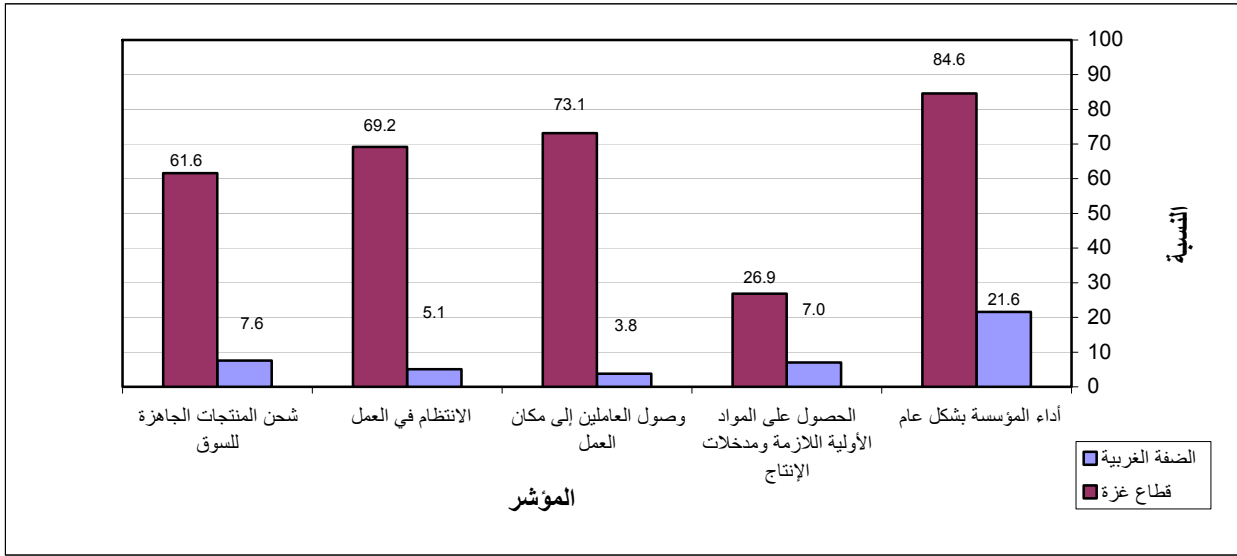
/ %7.0 :  
2009  
/ %26.9 2009  
2009

/ %17.1 :  
/ %50.0  
2009  
/ %17.5 :  
/ %46.2  
2009

/ %3.2 :  
2009 /

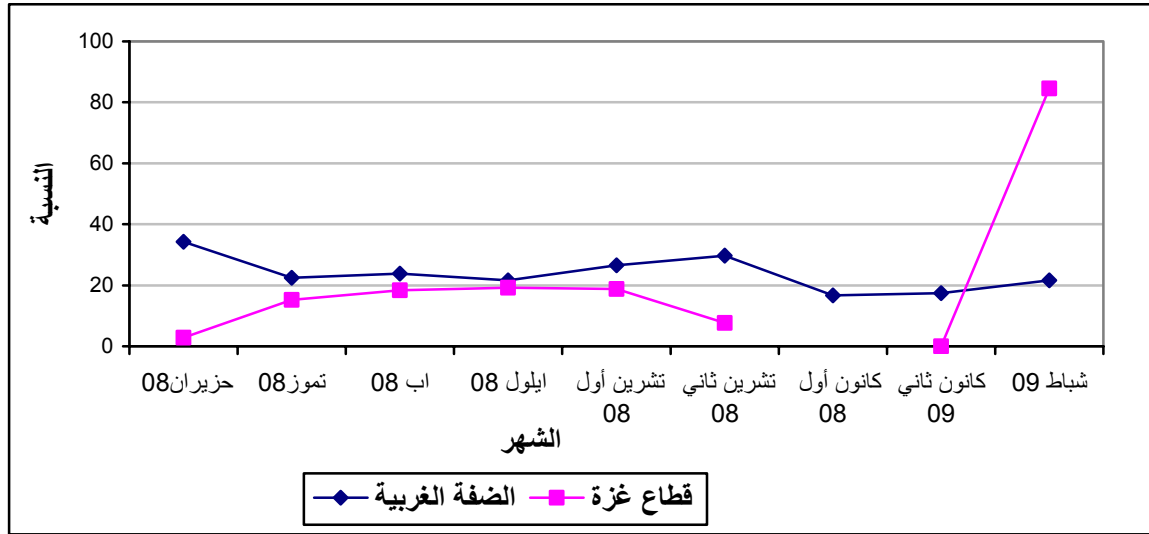
:  
/ %31.7  
2009

/ %60.0  
 .2009  
 :  
 / %92.4  
 %58.6 .( %84.6 %93.0)  
 %58.9 /  
 %17.5) %17.5 ( %54.5  
 %23.6) %23.9 ( %18.2  
 .( %27.3  
 :  
 / %10.7  
 %80.7 ( %7.7 %10.9) 2009  
 .( %65.4 %82.0)  
 - /  
 / %39.3 -(2009 )  
 .( %65.3 %37.1)  
 /  
 .( %61.5 %14.4) %18.1 2009  
 / %39.3  
 .( %65.3 %37.1) 2009  
 ( )  
 %56.8  
 ( %69.1 %55.7)  
 %65.4 %25.5) %28.5  
 / %56.5 ( )  
 %55.8)  
 .( %65.4  
 2009



( 2009 )

:2



.2008

\*

# Tables

:1-1

2009

**Table 1-1: Percentage of the Industrial Enterprises Witnessed an Improved Situation During the Reference Month Compared to that before the Reference Month for the Main Indicators in the Palestinian Territory 2009**

Indicator	Reference Month									
	2009		2008							
	شباط Feb.	كانون ثاني Jan.	كانون أول Dec.	تشرين ثاني Nov.	تشرين أول Oct.	Sept.	Aug.	July	June	May
Enterprise performance in general	26.4	16.1	-	25.0	24.8	21.0	22.2	20.9	27.4	23.7
Obtaining needed raw materials and inputs	8.5	9.9	-	10.6	12.2	10.5	12.4	10.6	29.8	27.9
Reaching the employees for their work place	9.1	4.0	-	3.5	6.1	3.6	3.9	3.9	26.2	25.2
Regularity of work	10.0	5.7	-	6.8	9.8	7.3	7.8	4.2	12.4	9.4
Transporting finished goods to market	11.8	7.1	-	9.2	8.5	7.1	8.3	11.4	4.5	4.6

(-) No Data Available

(-)

:2-1

2009

**Table 1-2: Percentage of Industrial Enterprises Witnessed an Improved Situation During the Reference Month Compared to that before the Reference Month for the Main Indicators in the West Bank 2009**

Indicator	Reference Month									
	2009		2008							
	شباط Feb.	كانون ثاني Jan.	كانون أول Dec.	تشرين ثاني Nov.	تشرين أول Oct.	Sept.	Aug.	July	June	May
Enterprise performance in general	21.6	17.4	16.7	29.7	26.6	21.6	23.8	22.5	34.2	28.3
Obtaining needed raw materials and inputs	7.0	10.7	7.0	11.7	10.6	8.8	10.6	11.1	37.3	33.6
Reaching the employees for their work place	3.8	4.3	3.1	4.4	6.5	5.0	4.8	3.9	32.6	30.1
Regularity of work	5.1	6.1	3.5	7.2	8.9	6.4	5.2	3.2	15.4	10.9
Transporting finished goods to market	7.6	7.7	5.4	11.4	8.2	8.2	10.3	13.6	5.4	5.3



2009

**Table 1-3: Percentage of Industrial Enterprises Witnessed an Improved Situation During the Reference Month Compared to that before the Reference Month for the Main Indicators in Gaza Strip 2009**

Indicator	Reference Month									
	2009		2008							
	شباط Feb.	كانون ثاني Jan.	كانون أول Dec.	تشرين ثاني Nov.	تشرين أول Oct.	Sept.	Aug.	July	June	May
Enterprise performance in general	84.6	0.0	-	7.7	18.8	19.2	18.4	15.2	2.8	4.7
Obtaining needed raw materials and inputs	26.9	0.0	-	6.4	17.7	15.1	16.7	8.9	2.8	4.7
Reaching the employees for their work place	73.1	0.0	-	0.0	4.7	0.0	1.8	3.8	2.8	4.7
Regularity of work	69.2	0.0	-	5.1	13.0	10.1	14.1	7.6	1.4	3.1
Transporting finished goods to market	61.6	0.0	-	1.3	9.4	4.0	3.5	3.8	1.4	1.6

(-) No Data Available

(-)

2009

/

:1-2

2009

**Table 2-1: Percentage Distribution of Owners/ Managers of the Industrial Enterprises According to Their Opinions of Main Indicators During February 2009 Compared to January 2009 in the Palestinian Territory**

<b>Problem</b>	<b>Total</b>	<b>Not Exist</b>	<b>Much Worse</b>	<b>Somewhat Worse</b>	<b>/ About the Same/ Unchanged</b>	<b>Somewhat Better</b>	<b>Much Better</b>
Enterprise performance in general	100	0.0	2.1	27.9	43.6	21.4	5.0
Production situation	100	0.9	2.3	27.6	44.6	20.5	4.1
Employees productivity	100	0.9	0.9	20.5	58.1	16.1	3.5
Obtaining needed raw materials and inputs	100	0.9	1.5	10.6	78.5	7.0	1.5
Reaching the employees for their work place	100	0.3	0.0	1.8	88.8	6.5	2.6
Regularity of work	100	0.0	0.9	9.1	80.0	6.5	3.5
Transporting finished goods to market	100	1.8	0.9	12.0	73.5	10.3	1.5
Financial situations	100	0.0	2.1	27.1	51.1	17.1	2.6
Banks credits & facilities	100	38.1	0.3	2.3	56.4	2.9	0.0
Level of employment	100	0.0	0.6	11.8	76.1	10.0	1.5
Value of sales	100	0.9	3.5	28.4	43.5	20.5	3.2

2009

**Table 2-2: Percentage Distribution of Owners/ Managers of the Industrial Enterprises According to Their Opinions of Main Indicators During February 2009 Compared to January 2009 in the West Bank**

Problem	Total	Not Exist	Much Worse	Somewhat Worse	/ About the Same/ Unchanged	Somewhat Better	Much Better
Enterprise performance in general	100	0.0	2.2	29.2	47.0	18.1	3.5
Production situation	100	0.0	2.2	29.2	47.3	18.1	3.2
Employees productivity	100	0.0	1.0	21.9	60.0	14.6	2.5
Obtaining needed raw materials and inputs	100	0.0	1.0	11.1	80.9	6.0	1.0
Reaching the employees for their work place	100	0.3	0.0	1.9	94.0	3.5	0.3
Regularity of work	100	0.0	0.6	9.2	85.1	4.8	0.3
Transporting finished goods to market	100	0.0	1.0	12.7	78.7	7.3	0.3
Financial situations	100	0.0	1.9	29.0	51.6	14.6	2.9
Banks credits & facilities	100	37.1	0.3	2.5	56.9	3.2	0.0
Level of employment	100	0.0	0.3	11.5	79.6	7.6	1.0
Value of sales	100	0.6	3.2	29.8	45.4	18.1	2.9

2009

**Table 2-2: Percentage Distribution of Owners/ Managers of the Industrial Enterprises According to Their Opinions of Main Indicators During February 2009 Compared to January 2009 in Gaza Strip**

Problem	Total	Not Exist	Much Worse	Somewhat Worse	/ About the Same/ Unchanged	Somewhat Better	Much Better
Enterprise performance in general	100	0.0	0.0	11.5	3.9	61.5	23.1
Production situation	100	11.5	3.8	7.7	11.6	50.0	15.4
Employees productivity	100	11.5	0.0	3.8	34.7	34.6	15.4
Obtaining needed raw materials and inputs	100	11.5	7.7	3.8	50.1	19.2	7.7
Reaching the employees for their work place	100	0.0	0.0	0.0	26.9	42.3	30.8
Regularity of work	100	0.0	3.8	7.7	19.3	26.9	42.3
Transporting finished goods to market	100	23.1	0.0	3.8	11.5	46.2	15.4
Financial situations	100	0.0	3.8	3.8	46.2	46.2	0.0
Banks credits & facilities	100	50.0	0.0	0.0	50.0	0.0	0.0
Level of employment	100	0.0	3.8	15.4	34.6	38.5	7.7
Value of sales	100	3.8	7.7	11.5	19.3	50.0	7.7

**Table 3: Percentage of Industrial Enterprises Witnessed an Improved Situation During the Reference Month (February 2009) Compared to that before the Reference Month for the Main Indicators by Region**

Indicator	Gaza Strip	West Bank	Palestinian Territory
Employees productivity	50.0	17.1	19.6
Financial situations	46.2	17.5	19.7
Banks credits & facilities	0.0	3.2	2.9
Level of employment	46.2	8.6	11.5
Value of sales	57.7	21.0	23.7

/ :4

2009

**Table 4: Percentage Distribution of Owners/Managers of the Active Industrial Enterprises According to the Reasons for Sales Level Stability or Decline by Region During February 2009**

Reason	Gaza Strip	West Bank	Palestinian Territory
Decrease in demand	20.0	18.8	18.9
Difficulties in exporting finished goods	0.0	2.0	1.9
Decline in the consumer purchasing power	20.0	31.7	31.1
Product Marketing Obstacles	0.0	1.0	0.9
Competence product	0.0	4.0	3.8
Seasonally related	0.0	8.9	8.5
Military check points/ israeli actions/ closures	60.0	13.8	16.0
Other	0.0	19.8	18.9
<b>Total</b>	<b>100</b>	<b>100</b>	<b>100</b>

2009

:5

**Table 5: Percentage Distribution of the Active Industrial Enterprises According to the Employment Mobility During February 2009 by Region**

Employment Mobility	Gaza Strip	West Bank	Palestinian Territory	
Hiring employees	26.9	7.1	8.6	
Firing employees	7.7	10.9	10.7	
No change	65.4	82.0	80.7	
<b>Total</b>	<b>100</b>	<b>100</b>	<b>100</b>	

2009

/

:6

**Table 6: Percentage Distribution of the Existing of Competition against the Main Product According to the Owners\ Managers of the Active Industrial Enterprises During February 2009 by Region**

Competence existence	Gaza Strip	West Bank	Palestinian Territory	
There is competition	84.6	93.0	92.4	
There is no competition	15.4	7.0	7.6	
<b>Total</b>	<b>100</b>	<b>100</b>	<b>100</b>	

2009

/

:7

**Table 7: Percentage Distribution of the Type of Competition According to the Owners\ Managers of the Active Industrial Enterprises During February 2009 by Region**

Type of competence	Gaza Strip	West Bank	Palestinian Territory	
Local	54.5	58.9	58.6	
Foreign	18.2	17.5	17.5	
Both	27.3	23.6	23.9	
<b>Total</b>	<b>100</b>	<b>100</b>	<b>100</b>	

**Table 8: Expectations of Owners/ Managers of the Active Industrial Enterprises for the Month that Follows the Reference Month Compared to the Reference Month (February, 2009) for the Main Indicators by Region**

Indicator	Reference Month									
	2009		2008							
	شباط Feb.	كانون ثاني Jan.	كانون أول Dec.	تشرين ثاني Nov.	تشرين أول Oct.	Sept.	Aug.	July	June	May
<b>Percentage of who are expecting better Enterprise situation</b>										
Palestinian Territory	39.3	33.4	-	27.5	32.0	33.0	28.0	30.3	32.5	32.8
West Bank	37.1	29.1	26.5	27.3	30.7	29.8	21.6	26.3	29.6	29.4
Gaza Strip	65.3	85.1	-	28.9	39.2	46.8	58.9	53.2	54.3	46.9
<b>Percentage of who are expecting higher employment level</b>										
Palestinian Territory	18.1	17.0	-	12.0	10.0	16.1	15.6	10.1	11.9	15.2
West Bank	14.4	11.0	11.2	9.7	6.1	10.3	8.5	3.7	6.2	8.0
Gaza Strip	61.5	88.8	-	28.9	31.4	40.3	50.0	46.8	54.3	45.4
<b>Percentage of who are expecting higher sales volume</b>										
Palestinian Territory	39.3	34.8	-	27.5	30.9	33.9	28.6	28.7	32.0	33.2
West Bank	37.1	29.7	28.1	27.3	29.4	30.9	22.3	24.5	29.0	29.9
Gaza Strip	65.3	96.3	-	28.9	39.2	46.8	58.9	53.2	54.3	46.9

(-) No Data Available

(-)

**Table 9: Expectations of Owners/ Managers of the Active Industrial Enterprises for the Six Months that Follow the Reference Month Compared to the Reference Month (February, 2009) for the Main Indicators by Region**

Indicator	Reference Month									
	2009		2008							
	شباط Feb.	كانون ثاني Jan.	كانون أول Dec.	تشرين ثاني Nov.	تشرين أول Oct.	Sept.	Aug.	July	June	May
<b>Percentage of who are expecting better Enterprise situation</b>										
Palestinian Territory	56.8	62.3	-	44.9	41.2	38.8	39.9	34.5	35.7	41.6
West Bank	55.7	60.5	50.2	44.6	39.3	35.0	35.7	30.4	32.9	38.5
Gaza Strip	69.1	85.2	-	47.4	51.0	54.8	60.7	58.7	57.1	54.7
<b>Percentage of who are expecting higher employment level</b>										
Palestinian Territory	28.5	36.0	-	20.9	17.4	21.6	19.2	15.1	15.4	22.3
West Bank	25.5	31.6	18.9	18.0	12.7	14.8	12.9	8.5	9.7	14.8
Gaza Strip	65.4	88.9	-	42.1	43.2	50.0	50.0	54.4	57.1	53.1
<b>Percentage of who are expecting higher sales volume</b>										
Palestinian Territory	56.5	62.9	-	45.6	41.1	42.5	40.9	35.1	36.6	43.9
West Bank	55.8	60.2	52.7	45.3	39.3	39.5	36.8	31.1	34.1	41.3
Gaza Strip	65.4	96.3	-	47.4	51.0	54.8	60.7	58.7	55.9	54.7

(-) No Data Available

(-)



**Table 10: Expectations of Owners/ Managers of the Active Industrial Enterprises about Better Expectations for their Enterprises for the Month that Follows the Reference Month (February, 2009) Compared to the Reference Month by Region**

<b>Indicator</b>	<b>Gaza Strip</b>	<b>West Bank</b>	<b>Palestinian Territory</b>	
Enterprise performance in general	80.8	37.0	40.3	
Employees productivity	34.6	25.2	26.0	
Obtaining needed raw materials and inputs	61.5	10.6	14.5	
Reaching the employees for their work place	34.6	7.0	9.2	
Regularity of work	65.3	13.4	17.5	
Transporting finished goods to market	42.3	11.6	13.9	
Financial situations	65.4	33.1	35.5	
Banks credits & facilities	7.7	6.7	6.8	

**Table 11: Expectations of Owners/ Managers of the Active Industrial Enterprises about Better Expectations for their Enterprises for the Six Months that Follow the Reference Month (February, 2009) Compared to the Reference Month for the Main Indicators by Region**

Indicator	Gaza Strip	West Bank	Palestinian Territory	
Enterprise performance in general	76.9	54.9	56.6	
Employees productivity	34.6	41.1	40.6	
Obtaining needed raw materials and inputs	65.4	15.7	19.6	
Reaching the employees for their work place	34.6	10.6	12.5	
Regularity of work	69.2	19.6	23.5	
Transporting finished goods to market	53.8	18.0	20.8	
Financial situations	73.1	45.6	47.8	
Banks credits & facilities	11.5	8.3	8.6	

**Table 12-1: Percentage Distribution of Owners/ Managers of the Active Industrial Enterprises According to Their Opinions of Main Indicators for the Month that Follows the Reference Month (February, 2009) Compared to the Reference Month in the Palestinian Territory**

Indicator	Total	Not Exist	Much Worse	Somewhat Worse	/ About the Same/ Unchanged	Somewhat Better	Much Better	
Enterprise performance in general	100	0.0	1.5	15.0	43.2	38.5	1.8	
Production situation	100	0.9	1.5	13.9	44.4	37.8	1.5	
Volume of sales	100	0.3	1.5	14.2	44.7	37.8	1.5	
Employees productivity	100	0.9	0.3	9.7	63.1	25.1	0.9	
Obtaining needed raw materials and inputs	100	1.2	0.9	3.0	80.4	13.3	1.2	
Reaching the employees for their work place	100	0.0	0.3	1.2	89.3	8.0	1.2	
Regularity of work	100	0.0	0.6	5.3	76.6	16.9	0.6	
Level of employment	100	0.0	0.6	4.1	77.2	17.2	0.9	
Transporting finished goods to market	100	1.5	0.6	5.6	78.4	13.6	0.3	
Financial situations	100	0.0	1.8	12.1	50.6	34.0	1.5	
Banks credits & facilities	100	38.2	0.0	1.5	53.5	6.5	0.3	

**Table 12-2: Percentage Distribution of Owners/ Managers of the Active Industrial Enterprises According to Their Opinions of Main Indicators for the Month that Follows the Reference Month (February, 2009) Compared to the Reference Month in the West Bank**

Indicator	Total	Not Exist	Much Worse	Somewhat Worse	/ About the Same/ Unchanged	Somewhat Better	Much Better	
Enterprise performance in general	100	0.0	1.6	16.2	45.2	35.7	1.3	
Production situation	100	0.0	1.6	15.0	46.3	35.8	1.3	
Volume of sales	100	0.0	1.6	15.3	46.0	35.8	1.3	
Employees productivity	100	0.0	0.3	10.5	64.0	24.6	0.6	
Obtaining needed raw materials and inputs	100	0.0	1.0	3.2	85.2	10.3	0.3	
Reaching the employees for their work place	100	0.0	0.3	1.3	91.4	6.7	0.3	
Regularity of work	100	0.0	0.6	5.4	80.6	13.1	0.3	
Level of employment	100	0.0	0.6	4.2	80.8	13.8	0.6	
Transporting finished goods to market	100	0.0	0.6	6.1	81.7	11.6	0.0	
Financial situations	100	0.0	1.9	12.8	52.2	32.1	1.0	
Banks credits & facilities	100	37.2	0.0	1.6	54.5	6.4	0.3	

**Table 12-3: Percentage Distribution of Owners/ Managers of the Active Industrial Enterprises According to Their Opinions of Main Indicators for the Month that Follows the Reference Month (February, 2009) Compared to the Reference Month in Gaza Strip**

Indicator	Total	Not Exist	Much Worse	Somewhat Worse	/ About the Same/ Unchanged	Somewhat Better	Much Better	
Enterprise performance in general	100	0.0	0.0	0.0	19.2	73.1	7.7	
Production situation	100	11.5	0.0	0.0	23.2	61.5	3.8	
Volume of sales	100	3.8	0.0	0.0	30.9	61.5	3.8	
Employees productivity	100	11.5	0.0	0.0	53.9	30.8	3.8	
Obtaining needed raw materials and inputs	100	15.4	0.0	0.0	23.1	50.0	11.5	
Reaching the employees for their work place	100	0.0	0.0	0.0	65.4	23.1	11.5	
Regularity of work	100	0.0	0.0	3.8	30.9	61.5	3.8	
Level of employment	100	0.0	0.0	3.8	34.7	57.7	3.8	
Transporting finished goods to market	100	19.2	0.0	0.0	38.5	38.5	3.8	
Financial situations	100	0.0	0.0	3.8	30.8	57.7	7.7	
Banks credits & facilities	100	50.0	0.0	0.0	42.3	7.7	0.0	

(2009 )

/

:1-13

**Table 13-1: Percentage Distribution of Owners/ Managers of the Active Industrial Enterprises According to Their Opinions of Main Indicators During the Next Six Months Compared to Reference Month (February, 2009) in the Palestinian Territory**

Indicator	Total	Not Exist	Much Worse	Somewhat Worse	/ About the Same/ Unchanged	Somewhat Better	Much Better	
Enterprise performance in general	100	0.0	1.2	12.2	30.0	51.6	5.0	
Production situation	100	0.9	1.2	11.2	29.9	51.2	5.6	
Volume of sales	100	0.3	1.2	11.5	30.5	50.6	5.9	
Employees productivity	100	0.9	0.6	8.6	49.3	37.3	3.3	
Obtaining needed raw materials and inputs	100	0.9	0.6	5.0	73.9	16.0	3.6	
Reaching the employees for their work place	100	0.0	0.3	2.1	85.1	10.1	2.4	
Regularity of work	100	0.0	0.6	5.3	70.6	21.7	1.8	
Level of employment	100	0.0	0.6	4.5	66.4	25.8	2.7	
Transporting finished goods to market	100	1.5	0.9	5.0	71.8	18.4	2.4	
Financial situations	100	0.3	1.2	10.7	40.0	43.9	3.9	
Banks credits & facilities	100	38.0	0.0	0.9	52.5	8.0	0.6	

**Table 13-2: Percentage Distribution of Owners/ Managers of the Active Industrial Enterprises According to Their Opinions of Main Indicators During the Next Six Months Compared to Reference Month (February, 2009) in the West Bank**

Indicator	Total	Not Exist	Much Worse	Somewhat Worse	/ About the Same/ Unchanged	Somewhat Better	Much Better	
Enterprise performance in general	100	0.0	1.3	13.2	30.6	51.4	3.5	
Production situation	100	0.0	1.3	12.2	30.8	51.9	3.8	
Volume of sales	100	0.0	1.3	12.5	30.4	51.6	4.2	
Employees productivity	100	0.0	0.6	9.3	49.0	38.5	2.6	
Obtaining needed raw materials and inputs	100	0.0	0.6	5.5	78.2	14.1	1.6	
Reaching the employees for their work place	100	0.0	0.3	2.3	86.8	9.3	1.3	
Regularity of work	100	0.0	0.6	5.5	74.3	18.3	1.3	
Level of employment	100	0.0	0.6	4.5	69.4	23.2	2.3	
Transporting finished goods to market	100	0.0	1.0	5.5	75.5	16.4	1.6	
Financial situations	100	0.3	1.3	11.3	41.5	42.1	3.5	
Banks credits & facilities	100	37.0	0.0	1.0	53.7	7.7	0.6	

**Table 13-3: Percentage Distribution of Owners/ Managers of the Active Industrial Enterprises According to Their Opinions of Main Indicators During the Next Six Months Compared to Reference Month (February, 2009) in Gaza Strip**

Indicator	Total	Not Exist	Much Worse	Somewhat Worse	/ About the Same/ Unchanged	Somewhat Better	Much Better	
Enterprise performance in general	100	0.0	0.0	0.0	23.1	53.8	23.1	
Production situation	100	11.5	0.0	0.0	19.3	42.3	26.9	
Volume of sales	100	3.8	0.0	0.0	30.8	38.5	26.9	
Employees productivity	100	11.5	0.0	0.0	53.9	23.1	11.5	
Obtaining needed raw materials and inputs	100	11.5	0.0	0.0	23.1	38.5	26.9	
Reaching the employees for their work place	100	0.0	0.0	0.0	65.4	19.2	15.4	
Regularity of work	100	0.0	0.0	3.8	27.0	61.5	7.7	
Level of employment	100	0.0	0.0	3.8	30.8	57.7	7.7	
Transporting finished goods to market	100	19.2	0.0	0.0	27.0	42.3	11.5	
Financial situations	100	0.0	0.0	3.8	23.1	65.4	7.7	
Banks credits & facilities	100	50.0	0.0	0.0	38.5	11.5	0.0	