



2008

/

2008

/

2006

.2008 - 1429 ©

:

/

.2008

2008

-

:

/

- **1647** . .

(970/972) 2 242 6340 :

(970/972) 2 242 6343 :

diwan@pcbs.gov.ps :

<http://www.pcbs.gov.ps> :

9

/

2008

13

496

(2006 - 2006)

2006

346

35

(J1)

2008

:J1

.1967

/
2008

40
2008/07/23 - 2008/07/03
/ 343) 496
(J1 15 138
2004
%70
20 2004

2008 .1

2008 / %28.6
%44.0 (%50.0 %22.7) 2008
(%47.2 %43.1)

2-1

%96.6
%91.2 . %94.3 %96.9
%86.9
%81.0 . %91.5
(%65.7 %83.0)

3-1

%97.0 2008
%2.4
. 5-2 %0.6

.2

1-2

-

/

/

%32.5

-(2008 -

)

%17.9

.

%6.2) 2008

%11.9

2008

%88.4)

%81.0

(

%54.3

.(

%25.7

%32.0

%49.7

%18.3

2008

.2008

2-2

)

%57.1

(

%22.9

%20.0

%32.9

%31.3

%35.8

%15.4

%74.7

%9.9

%36.6

%33.2

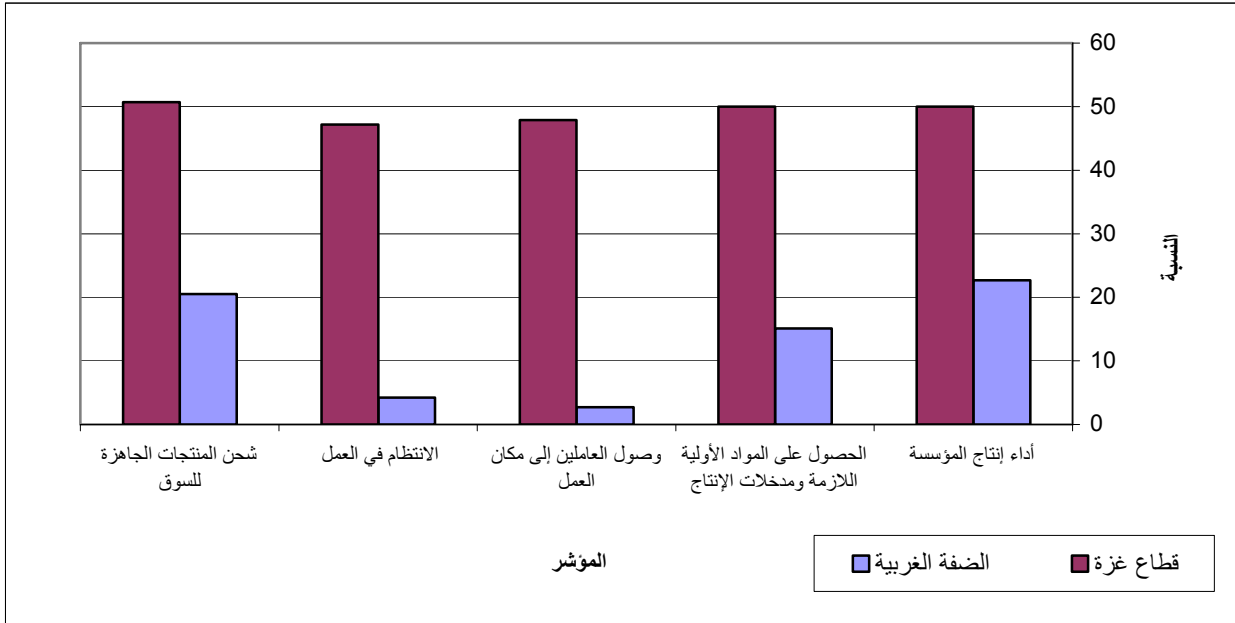
%30.2

.3
 1-3
 / %28.7
 / %18.1
 %21.0)
 %11.1) %9.6 ((.
 2-3
 %100.0
 %99.1
 %99.0 .
 . %98.2
 : 3-3
 %89.5
 %68.6 %92.3
 %71.2
 %28.8
 %69.6
 %30.4
 %12.5 %87.5
 : 4-3
 %8.2
 %9.2 %11.5 2008
 %28.6

2008

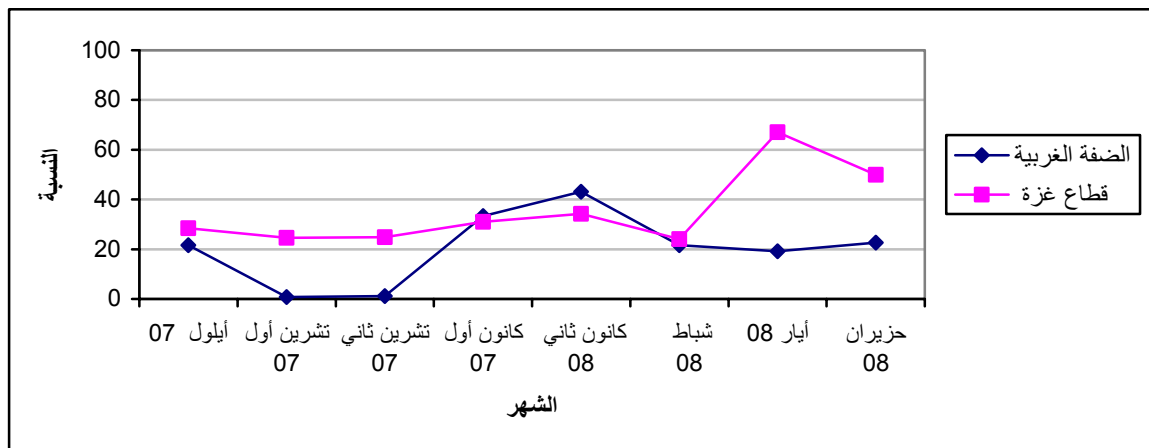
2008

:1



(2008)

:2



2008

Table 1-1: Percentage of the Industrial Establishments Encountered Worse Situation During the Reference Month Compared to that before the Reference Month for the Main Indicators in the Palestinian Territory 2008

Indicator	Reference Month									
	2008						2007			
	June	May	April	Mar.	Feb.	Jan.	Dec.	Nov.	Oct.	Sep.
Establishment performance in general	28.6	29.9	-	-	24.1	34.2	31.0	24.9	24.6	28.4
Obtaining needed raw materials and inputs	22.7	27.6	-	-	16.4	20.1	27.7	22.4	22.4	29.7
Problems of employees reaching place of work	12.4	9.7	-	-	5.7	2.2	2.4	2.5	2.2	7.6
Regularity of work	13.6	15.0	-	-	8.0	7.9	16.5	11.8	10.2	11.7
Transporting finished goods to market	27.0	34.3	-	-	23.7	23.0	28.0	22.6	19.5	19.7

(-) No Data Available

(-)

:2-1

2008 *

Table 1-2: Percentage of the Industrial Establishments Encountered Worse Situation During the Reference Month Compared to that before the Reference Month for the Main Indicators in the West Bank* 2008

Indicator	Reference Month									
	2008						2007			
	June	May	April	Mar.	Feb.	Jan.	Dec.	Nov.	Oct.	Sep.
Establishment performance in general	22.7	19.2	22.4	0.8	21.6	43.1	33.3	1.2	0.8	21.6
Obtaining needed raw materials and inputs	15.1	16.2	25.5	1.6	23.9	38.0	33.7	2.7	1.6	23.9
Problems of employees reaching place of work	2.7	1.1	19.3	0.8	16.5	49.2	29.5	3.9	0.8	16.5
Regularity of work	4.2	4.2	0.8	1.2	18.1	70.5	9.4	0.8	1.2	18.1
Transporting finished goods to market	20.5	25.2	21.8	0.4	0.4	90.2	7.1	2.0	0.4	0.4

* West Bank includes Jerusalem Governorate with J1

*

2008

:3-1

Table 1-3: Percentage of the Industrial Establishments Encountered Worse Situation During the Reference Month Compared to that before the Reference Month for the Main Indicators in Gaza Strip 2008

Indicator	Reference Month									
	2008						2007			
	June	May	April	Mar.	Feb.	Jan.	Dec.	Nov.	Oct.	Sep.
Establishment performance in general	50.0	67.1	-	-	24.1	34.2	31.0	24.9	24.6	28.4
Obtaining needed raw materials and inputs	50.0	67.1	-	-	16.4	20.1	27.7	22.4	22.4	29.7
Problems of employees reaching place of work	47.9	39.5	-	-	5.7	2.2	2.4	2.5	2.2	7.6
Regularity of work	47.2	52.6	-	-	8.0	7.9	16.5	11.8	10.2	11.7
Transporting finished goods to market	50.7	65.8	-	-	23.7	23.0	28.0	22.6	19.5	19.7

(-) No Data Available

(-)

Table 2-1: Percentage Distribution of Owners/ Managers of the Industrial Establishments According to Their Opinions for Main Indicators During June 2008 Compared with May 2008 in the Palestinian Territory

Problem	Total	Much Worse	Somewhat Worse	/ About the Same/ Unchanged	Somewhat Better	Much Better	
Establishment performance in general	100	9.0	19.6	44.0	26.2	1.2	
Production situation	100	9.0	22.6	38.6	28.6	1.2	
Employees productivity	100	7.8	19.0	47.0	25.0	1.2	
Obtaining needed raw materials and inputs	100	7.9	14.8	65.0	12.1	0.3	
Problems of employees reaching place of work	100	7.0	5.5	83.0	4.2	0.3	
Regularity of work	100	6.9	6.6	80.4	5.2	0.9	
Transporting finished goods to market	100	8.8	18.2	62.1	10.6	0.3	
Financial situations	100	7.6	15.7	60.1	16.3	0.3	
Banks credits & facilities	100	7.4	4.9	84.0	3.7	0.0	
Level of employment	100	6.9	13.0	70.1	10.0	0.0	
Value of sales	100	8.1	27.7	33.4	29.9	0.9	

2008

/

: :2-2

*

2008

Table 2-2: Percentage Distribution of Owners/ Managers of the Industrial Establishments According to Their Opinions for Main Indicators During June 2008 Compared with May 2008 in the West Bank

Problem	Total	Much Worse	Somewhat Worse	/ About the Same/ Unchanged	Somewhat Better	Much Better	
Establishment performance in general	100	2.7	20.0	43.1	33.4	0.8	
Production situation	100	2.7	23.8	36.2	36.5	0.8	
Employees productivity	100	1.2	20.0	46.2	31.8	0.8	
Obtaining needed raw materials and inputs	100	1.2	13.9	69.5	15.4	0.0	
Problems of employees reaching place of work	100	0.0	2.7	91.9	5.4	0.0	
Regularity of work	100	0.0	4.2	88.8	6.2	0.8	
Transporting finished goods to market	100	2.3	18.1	66.0	13.6	0.0	
Financial situations	100	0.8	15.8	62.9	20.5	0.0	
Banks credits & facilities	100	0.4	4.7	90.2	4.7	0.0	
Level of employment	100	0.0	12.0	75.3	12.7	0.0	
Value of sales	100	1.5	30.4	29.2	37.7	1.2	

* West Bank includes Jerusalem Governorate with J1

*

2008

Table 2-3: : Percentage Distribution of Owners/ Managers of the Industrial Establishments According to Their Opinions for Main Indicators During June 2008 Compared with May 2008 in Gaza Strip

Problem	Total	Much Worse	Somewhat Worse	/ About the Same/ Unchanged	Somewhat Better	Much Better	
Establishment performance in general	100	31.9	18.1	47.2	0.0	2.8	
Production situation	100	31.9	18.1	47.2	0.0	2.8	
Employees productivity	100	31.9	15.3	50.0	0.0	2.8	
Obtaining needed raw materials and inputs	100	31.9	18.1	48.6	0.0	1.4	
Problems of employees reaching place of work	100	32.4	15.5	50.7	0.0	1.4	
Regularity of work	100	31.9	15.3	50.0	1.4	1.4	
Transporting finished goods to market	100	32.4	18.3	47.9	0.0	1.4	
Financial situations	100	31.9	15.3	50.0	1.4	1.4	
Banks credits & facilities	100	31.9	5.6	62.5	0.0	0.0	
Level of employment	100	31.9	16.7	51.4	0.0	0.0	
Value of sales	100	31.9	18.1	48.6	1.4	0.0	

Table 3: Percentage of the Industrial Establishments Encountered Worse Situation During the Reference Month (June 2008) Compared to that before the Reference Month for the Main Indicators by Region

Problem	Gaza Strip	* West Bank*	Palestinian Territory	
Employees productivity	47.2	21.2	26.8	
Financial situations	47.2	16.6	23.3	
Banks credits & facilities	37.5	5.1	12.3	
Level of employment	48.6	12.0	19.9	
Value of sales	50.0	31.9	35.8	

* West Bank includes Jerusalem Governorate with J1

*

/ :4

2008

Table 4: Percentage Distribution of Owners/Managers of the Industrial Establishments According to the Reasons for Sales Level Stability or Decline by Region During June 2008

Reason	Gaza Strip	* West Bank*	Palestinian Territory	
Decrease in demand	0.0	11.1	9.6	
Difficulties in exporting finished goods	0.0	1.2	1.1	
Decline in the consumer purchasing power	15.4	30.9	28.7	
Product Marketing Obstacles	0.0	4.9	4.3	()
Competence product	0.0	4.9	4.3	
Seasonally related	0.0	21.0	18.1	
Military check points/ israeli actions/ closures	0.0	11.1	9.6	/ /
Other	84.6	14.8	24.5	
Total	100	100	100	

* West Bank includes Jerusalem Governorate with J1

*

2008

:5

Table 5: Percentage Distribution of the Active Industrial Establishments According to the Employment Mobility During June 2008 by Region

Employment Mobility	Gaza Strip	* West Bank*	Palestinian Territory
Hiring employees	5.7	8.5	8.1
Firing employees	28.6	9.2	11.5
No change	65.7	82.3	80.3
Total	100	100	100

* West Bank includes Jerusalem Governorate with J1

*

2008

/

:6

Table 6: Percentage Distribution of the Existing of Competence of the Main Product According to the Owners\ Managers of the Active Industrial Establishments During June 2008 by Region

Competence existence	Gaza Strip	* West Bank*	Palestinian Territory
There is competition	68.6	92.3	89.5
There is no competition	31.4	7.7	10.5
Total	100	100	100

* West Bank includes Jerusalem Governorate with J1

*

2008

/

:7

Table 7: Percentage Distribution of the Type of Competence According to the Owners\ Managers of the Active Industrial Establishments During June 2008 by Region

Type of competence	Gaza Strip	* West Bank*	Palestinian Territory
Local	87.5	69.6	71.2
Foreign	12.5	30.4	28.8
Total	100	100	100

* West Bank includes Jerusalem Governorate with J1

*

(2008)

/ :8

Table 8: Expectations of Owners/ Managers of the Active Industrial Establishments for the Month that Follow the Reference Month Compared With the Reference (June, 2008) Month for the Main Indicators by Region

Indicator	Reference Month										
	2008						2007				
	June	May	April	Mar.	Feb.	Jan.	Dec.	Nov.	Oct.	Sep.	
Percentage of who are expecting better establishment situation											
Palestinian Territory	32.5	32.8	-	-	31.8	28.7	18.2	18.8	22.1	19.4	
West Bank*	29.6	29.4	36.0	35.4	31.5	26.2	19.5	22.2	22.1	19.4	*
Gaza Strip	54.3	46.9	-	-	34.1	56.5	13.3	4.9	22.6	19.2	
Percentage of who are expecting higher employment level											
Palestinian Territory	11.9	15.2	-	-	7.3	6.9	5.4	5.4	9.6	9.0	
West Bank*	6.2	8.0	10.3	10.5	5.1	4.7	5.1	6.0	9.3	8.0	*
Gaza Strip	54.3	45.4	-	-	20.5	30.4	6.8	3.3	13.2	13.5	
Percentage of who are expecting higher sales volume											
Palestinian Territory	32.0	33.2	-	-	33.3	31.2	19.9	19.1	23.4	20.8	
West Bank*	29.0	29.9	38.9	37.1	33.1	28.9	21.2	22.2	24.1	21.1	*
Gaza Strip	54.3	46.9	-	-	34.1	56.5	15.0	6.6	22.6	19.2	

(-) No Data Available

(-)

* West Bank includes Jerusalem Governorate with J1

*

(2008)

/ :9

Table 9: Expectations of Owners/ Managers of the Active Industrial Establishments for the Six Months that Follow the Reference Month Compared With the Reference Month (June, 2008) for the Main Indicators by Region

Indicator	Reference Month										
	2008						2007				
	June	May	April	Mar.	Feb.	Jan.	Dec.	Nov.	Oct.	Sep.	
Percentage of who are expecting better establishment situation											
Palestinian Territory	35.7	41.6	-	-	61.7	59.6	33.5	36.0	37.4	41.5	
West Bank*	32.9	38.5	49.4	57.2	62.2	58.2	36.5	33.3	36.3	41.8	*
Gaza Strip	57.1	54.7	-	-	58.4	78.9	20.3	52.4	43.2	39.7	
Percentage of who are expecting higher employment level											
Palestinian Territory	15.4	22.3	-	-	25.2	22.7	13.2	21.6	16.4	21.5	
West Bank*	9.7	14.8	15.8	22.9	23.2	20.5	11.9	19.0	14.3	19.8	*
Gaza Strip	57.1	53.1	-	-	38.9	52.6	18.6	38.1	27.3	28.6	
Percentage of who are expecting higher sales volume											
Palestinian Territory	36.6	43.9	-	-	67.6	64.1	36.5	38.6	38.5	42.7	
West Bank*	34.1	41.3	53.8	59.8	68.9	63.0	39.8	36.4	37.5	43.4	*
Gaza Strip	55.9	54.7	-	-	58.4	78.9	22.0	52.4	43.2	39.7	

(-) No Data Available

(-)

* West Bank includes Jerusalem Governorate with J1

*

(2008)

/ :10

Table 10: Expectations of Owners/ Managers of the Active Industrial Establishments about Better Expectations for their Establishments for the Month that Follow the Reference Month (June, 2008) Compared With the Reference Month by Region

Indicator	Gaza Strip	* West Bank*	Palestinian Territory	
Establishment performance in general	54.3	23.5	27.1	
Employees productivity	54.3	25.1	28.6	
Obtaining needed raw materials and inputs	54.3	6.9	12.6	
Problems of employees reaching place of work	54.3	4.6	10.5	
Regularity of work	54.3	8.5	13.9	
Transporting finished goods to market	54.3	9.7	15.0	
Financial situations	54.3	12.7	17.7	
Banks credits & facilities	17.1	3.2	4.9	

* West Bank includes Jerusalem Governorate with J1

*

(2008)

/ :11

Table 11: Expectations of Owners/ Managers of the Active Industrial Establishments about Better Expectations for their Establishments for the Six Months that Follow the Reference Month (June, 2008) Compared With the Reference Month for the Main Indicators by Region

Indicator	Gaza Strip	* West Bank*	Palestinian Territory	
Establishment performance in general	58.8	28.9	32.4	
Employees productivity	57.1	27.5	31.1	
Obtaining needed raw materials and inputs	55.9	8.2	13.7	
Problems of employees reaching place of work	57.1	5.5	11.6	
Regularity of work	57.1	8.6	14.4	
Transporting finished goods to market	57.1	14.0	19.1	
Financial situations	57.1	16.7	21.5	
Banks credits & facilities	20.0	4.4	6.2	

* West Bank includes Jerusalem Governorate with J1

*

(2008)

/

:1-12

Table 12-1: Percentage Distribution of Owners/ Managers of the Active Industrial Establishments According to Their Opinions for Main Indicators for the Month that Follow the Reference Month (June, 2008) Compared With the Reference Month in the Palestinian Territory

Problem	Total	Much Worse	Somewhat Worse	/ About the Same/ Unchanged	Somewhat Better	Much Better	
Establishment performance in general	100	1.0	15.3	56.6	27.1	0.0	
Production situation	100	1.0	16.9	49.6	32.5	0.0	
Volume of sales	100	1.0	17.3	49.7	32.0	0.0	
Employees productivity	100	1.0	13.9	56.5	28.6	0.0	
Obtaining needed raw materials and inputs	100	0.7	8.5	78.2	12.6	0.0	
Problems of employees reaching place of work	100	0.3	2.4	86.8	10.5	0.0	
Regularity of work	100	0.3	5.4	80.4	13.9	0.0	
Level of employment	100	0.3	6.8	81.0	11.9	0.0	
Transporting finished goods to market	100	1.7	11.9	71.4	15.0	0.0	
Financial situations	100	1.0	14.6	66.7	17.7	0.0	
Banks credits & facilities	100	1.0	2.4	91.7	4.9	0.0	

*

(2008)

/

:2-12

Table 12-2: Percentage Distribution of Owners/ Managers of the Active Industrial Establishments According to Their Opinions for Main Indicators for the Month that Follow the Reference Month (June, 2008) Compared With the Reference Month in the West Bank*

Problem	Total	Much Worse	Somewhat Worse	About the Same/ Unchanged	Somewhat Better	Much Better
Establishment performance in general	100	0.8	14.6	61.1	23.5	0.0
Production situation	100	0.8	16.5	53.1	29.6	0.0
Volume of sales	100	0.8	17.0	53.2	29.0	0.0
Employees productivity	100	0.8	13.1	61.0	25.1	0.0
Obtaining needed raw materials and inputs	100	0.4	6.9	85.8	6.9	0.0
Problems of employees reaching place of work	100	0.0	0.4	95.0	4.6	0.0
Regularity of work	100	0.0	3.9	87.6	8.5	0.0
Level of employment	100	0.0	5.4	88.4	6.2	0.0
Transporting finished goods to market	100	1.5	10.8	78.0	9.7	0.0
Financial situations	100	0.8	14.3	72.2	12.7	0.0
Banks credits & facilities	100	0.8	2.4	93.6	3.2	0.0

* West Bank includes Jerusalem Governorate with J1

*

(2008)

/

:3-12

Table 12-3: Percentage Distribution of Owners/ Managers of the Active Industrial Establishments According to Their Opinions for Main Indicators for the Month that Follow the Reference Month (June, 2007) Compared With the Reference Month in Gaza Strip

Problem	Total	Much Worse	Somewhat Worse	About the Same/ Unchanged	Somewhat Better	Much Better	
Establishment performance in general	100	2.9	20.0	22.8	54.3	0.0	
Production situation	100	2.9	20.0	22.8	54.3	0.0	
Volume of sales	100	2.9	20.0	22.8	54.3	0.0	
Employees productivity	100	2.9	20.0	22.8	54.3	0.0	
Obtaining needed raw materials and inputs	100	2.9	20.0	22.8	54.3	0.0	
Problems of employees reaching place of work	100	2.9	17.1	25.7	54.3	0.0	
Regularity of work	100	2.9	17.1	25.7	54.3	0.0	
Level of employment	100	2.9	17.1	25.7	54.3	0.0	
Transporting finished goods to market	100	2.9	20.0	22.8	54.3	0.0	
Financial situations	100	2.9	17.1	25.7	54.3	0.0	
Banks credits & facilities	100	2.9	2.9	77.1	17.1	0.0	

(2008)

/

:1-13

Table 13-1: Percentage Distribution of Owners/ Managers of the Active Industrial Establishments According to Their Opinions for Main Indicators During the Next Six Months Compared with Reference Month (June, 2008) in the Palestinian Territory

Problem	Total	Much Worse	Somewhat Worse	About the Same/ Unchanged	Somewhat Better	Much Better
Establishment performance in general	100	0.3	25.9	41.3	31.1	1.4
Production situation	100	0.3	29.9	34.1	34.7	1.0
Volume of sales	100	0.3	32.9	30.2	35.6	1.0
Employees productivity	100	0.3	26.6	42.0	30.4	0.7
Obtaining needed raw materials and inputs	100	0.3	9.2	76.8	13.0	0.7
Problems of employees reaching place of work	100	0.3	2.7	85.4	10.6	1.0
Regularity of work	100	0.3	8.5	76.8	13.7	0.7
Level of employment	100	0.3	9.6	74.7	14.7	0.7
Transporting finished goods to market	100	0.7	13.0	67.2	18.4	0.7
Financial situations	100	0.3	20.5	57.7	20.8	0.7
Banks credits & facilities	100	0.7	3.1	90.0	5.9	0.3

* (2008) / :2-13
Table 13-2: Percentage Distribution of Owners/ Managers of the Active Industrial Establishments According to Their Opinions for Main Indicators During the Next Six Months Compared with Reference Month (June, 2008) in the West Bank*

Problem	Total	Much Worse	Somewhat Worse	About the Same/ Unchanged	Somewhat Better	Much Better
Establishment performance in general	100	0.0	26.6	44.5	27.4	1.5
Production situation	100	0.0	31.3	35.8	31.7	1.2
Volume of sales	100	0.0	34.5	31.4	32.9	1.2
Employees productivity	100	0.0	27.5	45.0	26.7	0.8
Obtaining needed raw materials and inputs	100	0.0	7.8	84.0	7.4	0.8
Problems of employees reaching place of work	100	0.0	0.8	93.7	4.3	1.2
Regularity of work	100	0.0	7.4	84.0	7.8	0.8
Level of employment	100	0.0	8.5	81.8	8.9	0.8
Transporting finished goods to market	100	0.4	12.0	73.6	13.2	0.8
Financial situations	100	0.0	20.9	62.4	15.9	0.8
Banks credits & facilities	100	0.4	3.2	92.0	4.0	0.4

* West Bank includes Jerusalem Governorate with J1

*

(2008)

/

:3-13

Table 13-3: Percentage Distribution of Owners/ Managers of the Active Industrial Establishments According to Their Opinions for Main Indicators During the Next Six Months Comparing with Reference Month (June, 2008) in Gaza Strip

Problem	Total	Much Worse	Somewhat Worse	About the Same/ Unchanged	Somewhat Better	Much Better	
Establishment performance in general	100	2.9	20.6	17.7	58.8	0.0	
Production situation	100	2.9	20.0	20.0	57.1	0.0	
Volume of sales	100	2.9	20.6	20.6	55.9	0.0	
Employees productivity	100	2.9	20.0	20.0	57.1	0.0	
Obtaining needed raw materials and inputs	100	2.9	20.6	20.6	55.9	0.0	
Problems of employees reaching place of work	100	2.9	17.1	22.9	57.1	0.0	
Regularity of work	100	2.9	17.1	22.9	57.1	0.0	
Level of employment	100	2.9	17.1	22.9	57.1	0.0	
Transporting finished goods to market	100	2.9	20.0	20.0	57.1	0.0	
Financial situations	100	2.9	17.1	22.9	57.1	0.0	
Banks credits & facilities	100	2.9	2.9	74.2	20.0	0.0	

2008

/

:14

Table 14: Percentage Distribution of Owners/Managers of the Active Industrial Establishments Opinion About the Factors Affecting Production Cost During June 2008 by Region

Factors		Opinion						
		No effect	Relatively weak effect	Weak effect	Relatively large effect	Large effect		
Foreign competition	Palestinian Territory	38.1	6.4	16.9	13.9	24.7		
	West bank	35.0	7.3	16.5	15.0	26.2		
	Gaza strip	60.0	0.0	20.0	5.7	14.3		
Informal Sector	Palestinian Territory	37.6	7.8	25.1	18.3	11.2		
	West bank	33.8	8.8	25.8	20.4	11.2		
	Gaza strip	65.7	0.0	20.0	2.9	11.4		
Local Competition	Palestinian Territory	15.7	3.7	16.9	25.4	38.3		
	West bank	13.1	4.2	17.7	26.9	38.1		
	Gaza strip	34.3	0.0	11.4	14.3	40.0		
Transport cost	Palestinian Territory	8.4	3.1	7.5	40.7	40.3		
	West bank	5.8	3.5	7.7	44.2	38.8		
	Gaza strip	28.6	0.0	5.7	14.3	51.4		
Political situation	Palestinian Territory	4.0	1.0	7.5	32.9	54.6		
	West bank	3.8	1.2	8.1	36.9	50.0		
	Gaza strip	5.6	0.0	2.9	2.9	88.6		
Costs of raw materials and inputs	Palestinian Territory	1.7	1.0	0.7	26.8	69.8		
	West bank	1.1	1.2	0.8	28.8	68.1		
	Gaza strip	5.7	0.0	0.0	11.4	82.9		

Table 15: Percentage Distribution of the Frequency of Loans Requested From the Banks According to the Owners/Managers of the Active Industrial Establishments Opinion During June 2008 by Region

Frequency	Gaza Strip	West Bank	Palestinian Territory	
No loan request	97.1	96.9	97.0	
Once	2.9	2.3	2.4	
2-5	0.0	0.8	0.6	5-2
Total	100	100	100	

Table 16: Percentage Distribution of Owners/ Managers of the Active Industrial Establishments According to Their Views About the Export Obstacles During June 2008 by Region

Problems	Region	Not applicable	I don't know	Large difficulty	Medium difficulty	Small difficulty	No difficulty		
Commitment to international market requirements	Palestinian Territory	1.8	0.0	8.3	20.2	69.7	0.0		
	West bank	1.9	0.0	8.4	19.6	70.1	0.0		
	Gaza strip	0.0	0.0	0.0	50.0	50.0	0.0		
Commitment to export market packaging requirements	Palestinian Territory	4.6	0.9	4.6	22.0	67.9	0.0		
	West bank	4.7	0.9	4.7	21.5	68.2	0.0		
	Gaza strip	0.0	0.0	0.0	50.0	50.0	0.0		
Price competition in the export market	Palestinian Territory	0.0	5.5	16.5	40.4	37.6	0.0		
	West bank	0.0	5.6	15.9	40.2	38.3	0.0		
	Gaza strip	0.0	0.0	50.0	50.0	0.0	0.0		
Compliance to quantity demanded and delivery time	Palestinian Territory	0.0	1.0	6.4	22.9	69.7	0.0		
	West bank	0.0	0.0	6.5	23.4	70.1	0.0		
	Gaza strip	0.0	50.0	0.0	0.0	50.0	0.0		
Export financing	Palestinian Territory	0.0	0.0	7.3	33.1	59.6	0.0		
	West bank	0.0	0.0	7.5	33.6	58.9	0.0		
	Gaza strip	0.0	0.0	0.0	0.0	100.0	0.0		
Marketing ability	Palestinian Territory	0.0	1.8	5.5	38.6	54.1	0.0		
	West bank	0.0	0.9	5.6	39.3	54.2	0.0		
	Gaza strip	0.0	50.0	0.0	0.0	50.0	0.0		
Regular achievement of raw materials	Palestinian Territory	4.6	3.7	10.1	33.9	47.7	0.0		
	West bank	4.7	2.8	9.3	34.6	48.6	0.0		
	Gaza strip	0.0	50.0	50.0	0.0	0.0	0.0		

2008

/

:()16

Table 16 (Cont): Percentage Distribution of Owners/ Managers of the Active Industrial Establishments According to Their Views About the Export Obstacles During June 2008 by Region

Problems	Region	Not applicable	I don't know	Large difficulty	Medium difficulty	Small difficulty	No difficulty		
Regular achievement of export	Palestinian Territory	0.0	3.7	10.1	46.8	39.4	0.0		
	West bank	0.0	2.8	9.3	47.7	40.2	0.0		
	Gaza strip	0.0	50.0	50.0	0.0	0.0	0.0		
Regular achievement of employee	Palestinian Territory	4.6	0.0	4.6	11.0	79.8	0.0		
	West bank	4.7	0.0	4.7	10.2	80.4	0.0		
	Gaza strip	0.0	0.0	0.0	50.0	50.0	0.0		
Palestinian export regulation and license	Palestinian Territory	0.9	0.0	1.8	34.9	62.4	0.0		
	West bank	0.9	0.0	1.9	34.6	62.6	0.0		
	Gaza strip	0.0	0.0	0.0	50.0	50.0	0.0		
Information access to the foreign market	Palestinian Territory	0.0	2.8	14.7	37.5	45.0	0.0		
	West bank	0.0	2.8	15.0	37.3	44.9	0.0		
	Gaza strip	0.0	0.0	0.0	50.0	50.0	0.0		
Traveling problems imposed on entering foreign markets	Palestinian Territory	1.8	3.7	14.7	42.2	37.6	0.0		
	West bank	1.9	2.8	15.0	42.9	37.4	0.0		
	Gaza strip	0.0	50.0	0.0	0.0	50.0	0.0		
Import regulation in the foreign market	Palestinian Territory	0.9	2.8	19.3	40.3	36.7	0.0		
	West bank	0.9	1.9	19.6	41.2	36.4	0.0		
	Gaza strip	0.0	50.0	0.0	0.0	50.0	0.0		
Costumer payment guarantee	Palestinian Territory	0.0	5.5	9.2	33.9	51.4	0.0		
	West bank	0.0	5.6	8.4	34.6	51.4	0.0		
	Gaza strip	0.0	0.0	50.0	0.0	50.0	0.0		

Table 17: Percentage of Mechanism of Finding Customers in the Export Market During June 2008 by Region

Approaching Customers	Gaza Strip	West Bank	Palestinian Territory
Market researches	50.0	49.5	49.5
Information gathered from commerce chamber industrial union etc...	50.0	18.7	19.3
Participate in international exhibitions and organized business missions	50.0	42.1	42.2
Self-organized visits to the export market	100.0	61.7	62.4
Personal relationships and contacts	50.0	97.2	96.3
Through internet	0.0	21.5	21.1
Customer self initiative	0.0	71.0	69.7

2008

:18

Table 18: Percentage of Distribution and Marketing Channels of Export Products to Israel Markets and Other Markets During June 2008 by Region

Achievement channel	Region and Market						
	Gaza Strip		West Bank		Palestinian Territory		
	Other market	Israeli market	Other market	Israeli market	Other market	Israeli market	
Direct sales to the customer	0.0	50.0	30.5	82.2	29.9	81.7	
Through establishment agency in this market	0.0	50.0	7.6	0.9	7.5	1.8	
Through palestinian agency	100.0	50.0	12.4	12.1	14.0	12.8	
Through israeli agency as a local seller or exporter	0.0	50.0	2.9	15.0	2.8	15.6	
Through the row material provider company (reproduce)	0.0	0.0	0.0	4.7		4.6	()
No exports reported to this market	0.0	0.0	3.8	1.9	3.7	1.8	
Other	0.0	0.0	29.0	1.0	28.4	1.0	