

2010

2006

.2010 - 1432 ©

.2010

.2010

1647 . .

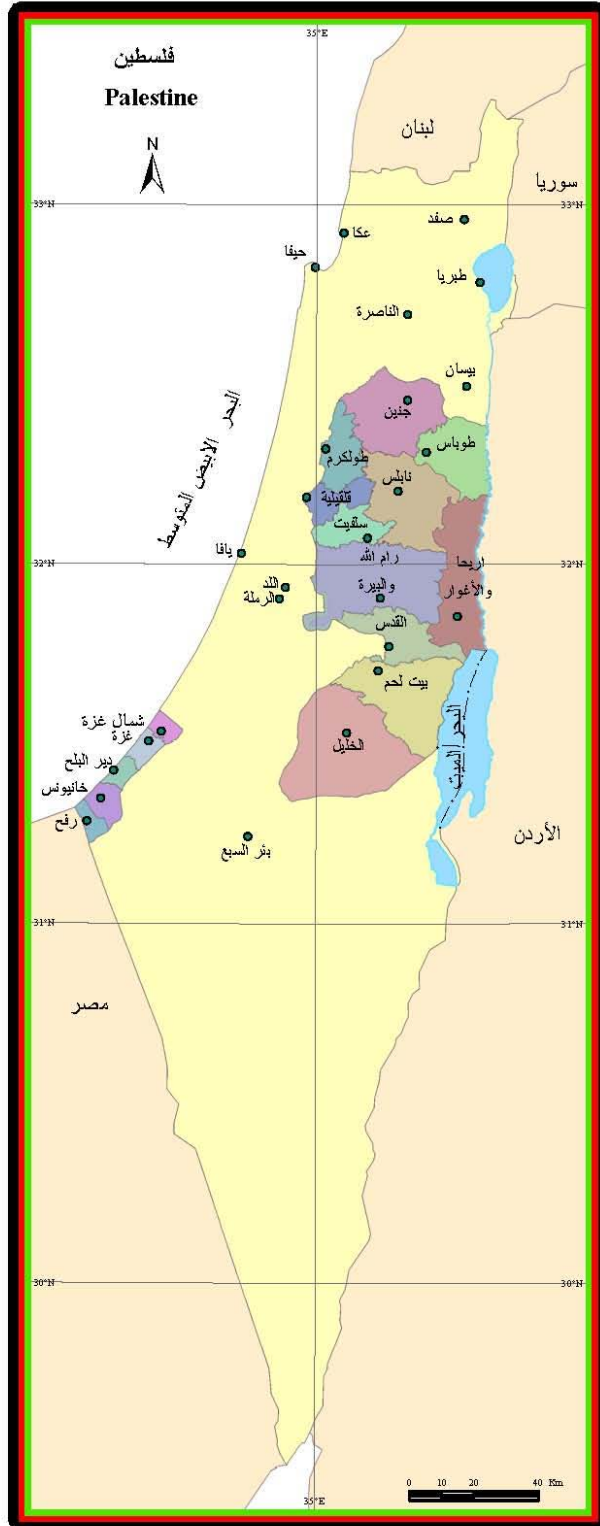
(970/972) 02-2982700 :

(970/972) 02- 2982710 :

1800300300 :

diwan@pcbs.gov.ps :

<http://www.pcbs.gov.ps> :



2010

(PNA)

2010 (CFG)

.(SDC)

(CFG)

•

•

•

•

•

2007

()

()

2010

21

:

25

:

29

:

33

34	2010	:1
34		:2
	2010	
34	2010	:3
35		:4
	2010	
35		:5
	2010	
36		:6
	2009 -1997	
37	2009 -1997	:7
38	2009 - 1997	:8
39	2009 - 1997	:9
40		:10

25	2010	:1
26		:2
29		:3
	2010	

(65)
(64-15)

15

:

:

:

() ()

:

:

()

:

1000

:

1000

:

1948

-:

()
()

: .1

: .2

: .3

:

1000 :

1000 :

:

4.1		11.0	2010	-
			%37.5	
1.6	(%62.0)		2.5	-
				(%38.0)
2014				-
6.7		2020	%48.2	
				7.2
		2007		-
			%35.9	
				3.3
		2007		-
3.6			%33.1	
				.2007
		2010		-
		%5.0	65	%30.4
			.2007	3.0
		2007		-
%3.2	65		%40.6	
		2009		3.5
		.2009		4.8
			%44.0	2010
			%29.7	
				%67.4
1997		1000	42.7	-
		31.9	2015	
4.1	1997	1000	4.9	
		3.6	2015	
			2010	1000
				32.8

1.1

2010

()

2010

()

()

.2010 61

"
1

J1

"

.1967

:J1 1

()

2007 -

(UNRWA)

1.98

(UNRWA)

282

²2009

³2000

(UNRWA)

.2009

472,109

2010

(UNRWA)

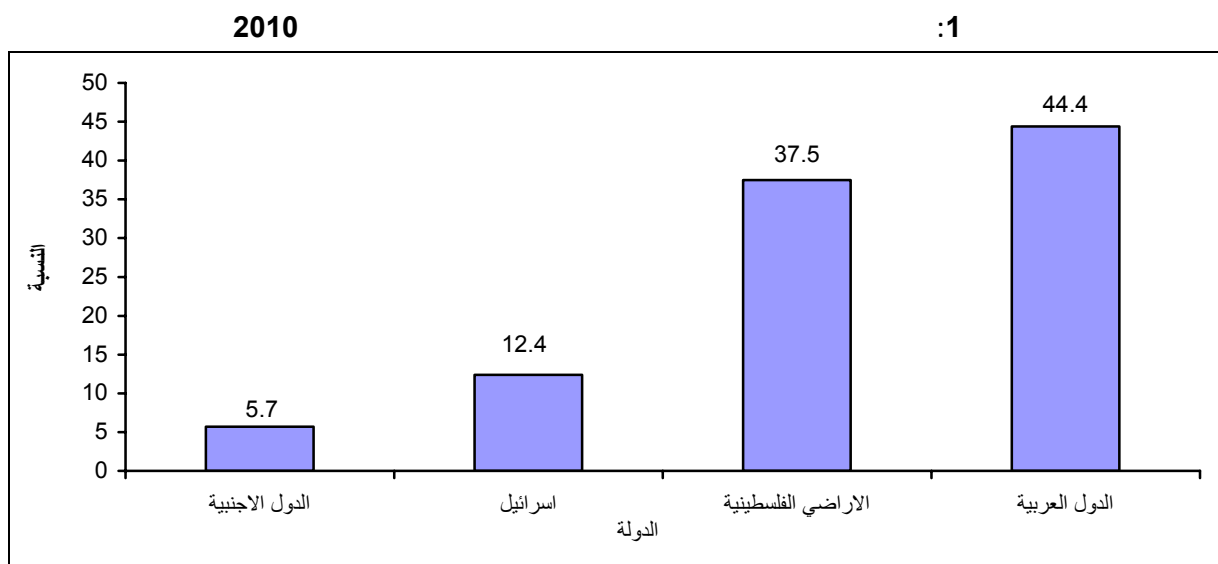
.2009

425,640

				2.1
			:	.1
			:	
	2025- 2007	%30		•
	2025-2007	%50		•
.2025		2007		•
	%2.4			.2
	%.2.5		:	.3
	%.1.5		:	.4
				3.1

1.3

2010	11.0
10.97	2010
%37.5	4.11
4.88	1.36
%5.7	626
	%44.4

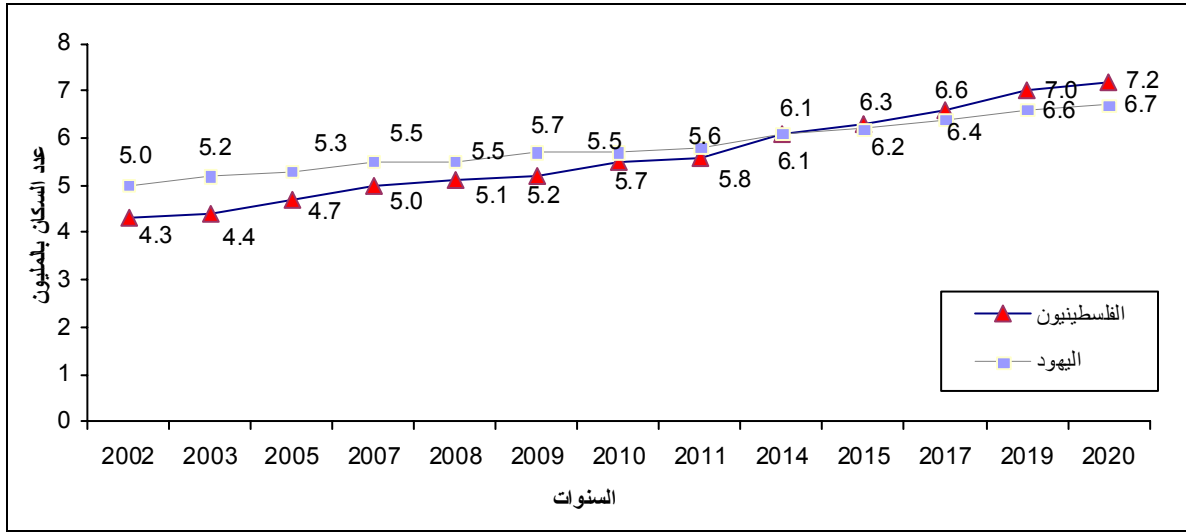


2.3

2020	6.9	7.2
5.7	2010	5.5
2014		6.1
%48.2	2020	
7.2	6.7	

.(61) .2010

:2



3.3

•

2007

5.1

%35.9

3.3 2007

1000

173.6

(29-25)

2007

1000

149.2 (34-30)

2004

22.5

25.1

•

2009

.2007

4.9

%33.1

3.6

2007

1000

216.1

(29-25)

1000

184.0 (34-30)

2006

29.3

30.0

25.0

%48.3

2007

15

%40.8

(19-15)

%92.7 %100.0

%0.5 %4.2

•

2010

102.5 %5.0 65 %30.4

(12) 2010

%48.4 %48.2 %42.0 %49.4 %45.8

%1.8 %0.8 %1.3 %47.9

.2010 %7.9 %1.3 %4.5

%29.3 %27.4 %28.3 (15)

%52.5 %51.1 %51.8

%18.3 %21.6 %19.9

.52010

4.4 2007

21.8 3.0

19.2 2004

.2004 20.2

•

1.36 2010

. %3.2 65 %40.6

2009 3.5

. 2009 2.8

2009 .2009 4.8

1000 2.7 1000 26.2

102.2 2009 6.8

. 6

5

6

. (61) .2010

2010

2010	4.1
-------------	------------

2.5 4.1 2010
 (%38.0) 1.6 (%62.0)
 %14.9

%13.2

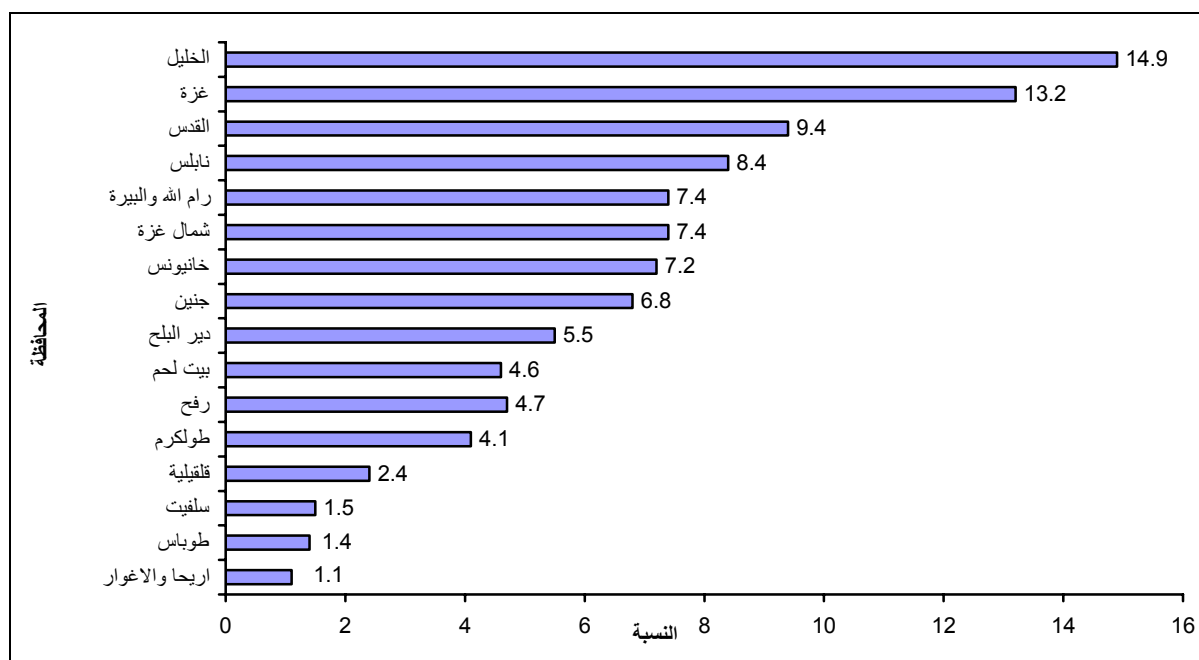
2010

.%9.4

%1.1

2010

:3



%44.0

%44.0 2010

757

2010

1.8

%67.4

1.1

%29.7

15 **%41.1**

65 . %41.1 2010 15
%3.2 %44.2 %39.2
%2.9
%2.4

100 **103.1**

2.0 2.1 2010
1.25 1.29 .103.1
769 793 103.1
.103.1

78.7 1997 101.3
2010
.2010 73.7 1997 94.7
.2010 87.4 1997 114.5

18.5

(2010-1997)
.2010 18.5 1997 16.4
(2010-1997)
2010 19.4 1997 17.4
.2010 17.2 1997 14.8

32.8
30.1 2010 .2015 31.9 2010
. 37.1

[Empty box]

1000	4.1		1000	3.6	2010
		2015			
	3.8		2010		4.2
2010	4.0				.2015
			.2015		3.5

2010	%2.9
-------------	-------------

%2.9	2010	.%3.3	%2.7
------	------	-------	------

[Empty box]

	.2007	5.8	2010	5.5
2007	5.5	2007	5.3	
. 2007	6.5	2010	5.8	

[Empty box]

	2007			
1997	6.0	2007	4.6	
.1997	5.6	2007	4.1	(2007-1997)
	.1997	6.9	2007	5.3

4.7

2006

.

5.0

4.6

2010

2010

70.8

72.2

2010

71.6

74.0

71.2

72.6

73.6

.

72.9

70.2

.

Tables

2010

:1

37.5	4,108,631	
12.4	1,360,214	
44.4	4,876,489	
5.7	626,824	
100.0	10,972,158	

2010

:2

100.0	4,108,631	56.0	2,299,802	44.0	1,808,829	
100.0	2,546,725	70.3	1,790,037	29.7	756,688	
100.0	1,561,906	32.6	509,765	67.4	1,052,141	

2010

:3

100.0	4,108,631	
62.0	2,546,725	
6.8	277,578	
1.4	55,703	
4.1	167,382	
8.4	344,070	
2.4	98,730	
1.5	63,882	
7.4	305,757	
1.1	46,076	
9.4	385,669	
4.6	191,487	
14.9	610,391	
38.0	1,561,906	
7.4	303,351	
13.2	543,195	
5.5	226,778	
7.2	296,438	
4.7	192,144	

2010

:4

124,797	130,303	255,100	171,138	177,694	348,832	295,935	307,997	603,932	4-0
110,731	116,073	226,804	160,507	167,252	327,759	271,238	283,325	554,563	9-5
102,522	106,549	209,071	156,398	163,674	320,072	258,920	270,223	529,143	14-10
92,820	95,711	188,531	147,511	154,701	302,212	240,331	250,412	490,743	19-15
75,852	78,502	154,354	123,130	129,018	252,148	198,982	207,520	406,502	24-20
57,857	60,580	118,437	95,839	100,259	196,098	153,696	160,839	314,535	29-25
46,522	48,233	94,755	82,763	85,964	168,727	129,285	134,197	263,482	34-30
37,264	37,852	75,116	72,827	74,917	147,744	110,091	112,769	222,860	39-35
30,341	31,859	62,200	61,286	64,055	125,341	91,627	95,914	187,541	44-40
24,646	27,311	51,957	50,236	53,831	104,067	74,882	81,142	156,024	49-45
19,044	20,617	39,661	37,694	40,104	77,798	56,738	60,721	117,459	54-50
14,038	14,107	28,145	25,885	26,679	52,564	39,923	40,786	80,709	59-55
10,639	9,507	20,146	20,367	18,941	39,308	31,006	28,448	59,454	64-60
7,919	5,868	13,787	16,639	13,239	29,878	24,558	19,107	43,665	69-65
5,921	4,009	9,930	12,751	9,357	22,108	18,672	13,366	32,038	74-70
4,296	2,921	7,217	9,164	6,506	15,670	13,460	9,427	22,887	79-75
3,847	2,848	6,695	9,444	6,955	16,399	13,291	9,803	23,094	+80
769,056	792,850	1,561,906	1,253,579	1,293,146	2,546,725	2,022,635	2,085,996	4,108,631	

2010

:5

16.2	16.4	16.3	13.7	13.7	13.7	14.6	14.8	14.7	4-0
14.4	14.6	14.5	12.8	12.9	12.9	13.4	13.6	13.5	9-5
13.3	13.4	13.4	12.5	12.7	12.6	12.8	13.0	12.9	14-10
12.1	12.1	12.1	11.8	12.0	11.9	11.9	12.0	11.9	19-15
9.9	9.9	9.9	9.8	10.0	9.9	9.8	9.9	9.9	24-20
7.5	7.6	7.6	7.6	7.8	7.7	7.6	7.7	7.7	29-25
6.0	6.1	6.1	6.6	6.6	6.6	6.4	6.4	6.4	34-30
4.8	4.8	4.8	5.8	5.8	5.8	5.4	5.4	5.4	39-35
3.9	4.0	4.0	4.9	5.0	4.9	4.5	4.6	4.6	44-40
3.2	3.4	3.3	4.0	4.2	4.1	3.7	3.9	3.8	49-45
2.5	2.6	2.5	3.0	3.1	3.1	2.8	2.9	2.9	54-50
1.8	1.8	1.8	2.1	2.1	2.1	2.0	2.0	2.0	59-55
1.4	1.2	1.3	1.6	1.5	1.5	1.5	1.4	1.4	64-60
1.0	0.7	0.9	1.3	1.0	1.2	1.2	0.9	1.1	69-65
0.8	0.5	0.6	1.0	0.6	0.8	0.9	0.5	0.7	74-70
0.7	0.5	0.5	0.7	0.5	0.6	0.8	0.5	0.5	79-75
0.5	0.4	0.4	0.8	0.5	0.6	0.7	0.5	0.6	+80
100.0	100.0	100.0	100.0	100.0	100.0	100.0	100.0	100.0	

2009- 1997

:6

2009	2008	2007	2006	2005	2004	2003	2002	2001	2000	1999	1998	1997
...	33,774	32,685	28,233	28,876	27,634	26,267	22,611	24,635	23,890	24,874	24,400	23,492
2,510	2,326	2,430	1,871	2,010	1,861	1,789	1,323	1,693	1,830	1,916	1,856	1,833
446	417	280	424	448	353	374	360	334	375	416	422	380
1,552	1,540	1,548	1,280	1,351	1,164	1,204	718	1,026	1,078	1,231	1,172	1,194
2,714	2,822	2,707	2,194	2,365	2,307	2,060	1,241	1,919	2,164	2,342	2,352	2,340
823	840	798	692	729	592	374	315	441	543	563	551	561
626	609	514	431	447	479	487	515	471	452	522	513	510
1,609	1,804	1,722	1,575	1,947	1,735	1,649	1,169	1,653	1,727	2,008	1,982	1,819
2,907	306	259	307	271	242	268	234	221	245	241	235	219
314	2,927	2,945	2,554	2,511	2,435	2,502	2,506	2,525	2,330	2,482	2,420	2,489
1,341	494	567	832	605	531	617	651	956	1,042	933	990	1,122
4,979	4,921	4,806	4,220	4,022	3,852	3,458	3,287	3,244	3,081	3,445	3,792	3,416
19,821	19,006	18,576	16,380	16,706	15,551	14,782	12,319	14,483	14,867	16,099	16,285	15,883
...	2,754	2,631	2,071	2,211	2,064	2,020	1,800	1,748	1,783	1,525	1,309	1,306
...	5,335	5,097	4,445	4,592	4,582	4,324	3,814	3,662	2,756	3,055	3,076	2,891
...	1,838	1,756	1,649	1,605	1,632	1,537	1,363	1,323	1,219	1,250	1,049	1,033
...	2,984	2,851	2,348	2,352	2,421	2,293	2,062	2,218	2,104	1,876	1,729	1,551
...	1,857	1,774	1,340	1,410	1,384	1,311	1,253	1,201	1,161	1,069	952	828
...	14,768	14,109	11,853	12,170	12,083	11,485	10,292	10,152	9,023	8,775	8,115	7,609

:(...)

2009-1997

:7

2009	2008	2007	2006	2005	2004	2003	2002	2001	2000	1999	1998	1997
...	4,399	4,043	3,756	4,211	3,961	3,909	3,045	3,687	3,546	3,761	3,465	3,449
307	272	270	204	248	235	226	155	224	226	186	176	179
66	32	30	31	31	38	39	38	50	46	39	31	32
294	301	225	221	245	218	211	146	177	196	223	219	180
470	433	375	302	412	331	346	216	339	324	398	344	284
158	173	129	117	104	98	104	47	87	87	126	85	85
78	99	66	51	48	70	57	51	41	55	55	60	61
577	382	398	430	457	450	429	303	446	386	452	437	439
51	56	43	45	54	44	39	40	57	67	53	53	55
547	438	333	291	316	272	374	381	329	339	369	345	377
163	111	100	99	134	115	132	86	117	111	160	160	137
533	506	429	441	417	433	403	312	340	283	327	303	314
3,244	2,803	2,398	2,232	2,466	2,304	2,360	1,775	2,207	2,120	2,388	2,213	2,143
...	289	298	246	302	314	272	272	281	266	231	211	211
...	625	644	579	701	680	626	428	570	524	523	487	486
...	181	187	250	247	221	214	178	200	191	256	176	174
...	298	307	271	285	275	306	243	286	262	198	222	254
...	203	209	178	210	167	131	149	143	183	165	156	181
...	1,596	1,645	1,524	1,745	1,657	1,549	1,270	1,480	1,426	1,373	1,252	1,306

:(...)

2009	2008	2007	2006	2005	2004	2003	2002	2001	2000	1999	1998	1997
...	8.8	8.8	7.8	8.2	8.1	7.9	7.0	7.8	7.8	8.4	8.5	8.4
9.4	8.9	9.6	7.6	8.4	8.0	7.9	6.0	7.8	8.7	9.4	9.3	9.5
8.4	8.1	5.7	8.9	9.7	7.9	8.7	8.6	8.3	9.6	11.1	11.7	10.9
9.5	9.6	9.9	8.3	9.0	7.9	8.3	5.1	7.4	7.9	9.2	9.0	9.4
8.2	8.7	8.5	7.1	7.8	7.8	7.2	4.4	7.0	8.1	8.9	9.2	9.4
8.7	9.1	8.9	7.9	8.5	7.1	4.6	4.0	5.7	7.3	7.8	7.8	8.2
10.1	10.1	8.7	7.5	8.0	8.8	9.1	9.9	9.2	9.1	10.7	10.8	11.1
5.5	6.3	6.2	5.9	7.5	6.9	6.7	4.9	7.2	7.7	9.3	9.5	9.0
7.1	7.1	6.2	7.6	6.9	6.3	7.2	6.5	6.3	7.2	7.3	7.3	7.0
7.7	7.9	8.1	7.1	7.1	7.0	7.3	7.3	7.5	7.0	7.5	7.4	7.8
7.3	2.8	3.3	4.9	3.7	3.3	4.0	4.3	6.5	7.3	6.7	7.4	8.6
8.6	8.8	8.8	8.0	7.9	7.9	7.3	7.2	7.3	7.2	8.3	9.5	8.9
8.1	8.0	8.0	7.2	7.6	7.2	7.1	6.0	7.3	7.6	8.5	8.9	8.9
...	10.0	9.9	8.1	9.0	8.8	8.9	8.2	8.3	8.8	7.8	7.0	7.3
...	10.6	10.4	9.4	10.0	10.3	10.0	9.1	9.0	7.0	8.0	8.3	8.1
...	8.8	8.7	8.4	8.5	8.9	8.7	8.0	8.0	7.6	8.1	7.0	7.2
...	10.8	10.7	9.1	9.4	9.9	9.7	9.0	10.0	9.7	9.0	8.5	7.9
...	10.5	10.4	8.1	8.9	9.0	8.8	8.7	8.7	8.7	8.3	7.7	6.9
...	10.3	10.1	8.8	9.3	9.6	9.4	8.7	8.9	8.1	8.2	7.9	7.6

:(...)

2009	2008	2007	2006	2005	2004	2003	2002	2001	2000	1999	1998	1997
...	1.1	1.1	1.0	1.2	1.2	1.2	0.9	1.2	1.2	1.3	1.2	1.2
1.1	1.0	1.1	0.8	1.0	1.0	1.0	0.7	1.0	1.1	0.9	0.9	0.9
1.2	0.6	0.6	0.6	0.7	0.9	0.9	0.9	1.2	1.2	1.0	0.9	0.9
1.8	1.9	1.4	1.4	1.6	1.5	1.5	1.0	1.3	1.4	1.7	1.7	1.4
1.4	1.3	1.2	1.0	1.4	1.1	1.2	0.8	1.2	1.2	1.5	1.3	1.1
1.7	1.9	1.4	1.3	1.2	1.2	1.3	0.6	1.1	1.2	1.7	1.2	1.2
1.3	1.6	1.1	0.9	0.9	1.3	1.1	1.0	0.8	1.1	1.1	1.3	1.3
2.0	1.3	1.4	1.6	1.8	1.8	1.8	1.3	1.9	1.7	2.1	2.1	2.2
1.2	1.3	1.0	1.1	1.4	1.2	1.0	1.1	1.6	2.0	1.6	1.7	1.8
1.5	1.2	0.9	0.8	0.9	0.8	1.1	1.1	1.0	1.0	1.1	1.1	1.2
0.9	0.6	0.6	0.6	0.8	0.7	0.9	0.6	0.8	0.8	1.2	1.2	1.1
0.9	0.9	0.8	0.8	0.8	0.9	0.8	0.7	0.8	0.7	0.8	0.8	0.8
1.3	1.2	1.0	1.0	1.1	1.1	1.1	0.9	1.1	1.1	1.3	1.2	1.2
...	1.0	1.1	1.0	1.2	1.3	1.2	1.2	1.3	1.3	1.2	1.1	1.2
...	1.2	1.3	1.2	1.5	1.5	1.4	1.0	1.4	1.3	1.4	1.3	1.4
...	0.9	0.9	1.3	1.3	1.2	1.2	1.0	1.2	1.2	1.7	1.2	1.2
...	1.1	1.1	1.0	1.1	1.1	1.3	1.1	1.3	1.2	0.9	1.1	1.3
...	1.1	1.2	1.1	1.3	1.1	0.9	1.0	1.0	1.4	1.3	1.3	1.5
...	1.1	1.1	1.0	1.2	1.2	1.2	0.9	1.2	1.2	1.3	1.2	1.2

:(...)

2010	2009	2005	2000	1997	
103.1	103.1	102.7	102.2	101.9	
78.7	80.5	96.3	100.6	101.3	
18.5	18.3	16.7	16.4	16.4	
32.8	32.7	37.3	40.9	42.7	
4.1	4.3	4.0	4.5	4.9	
2.9	2.9	3.3	3.6	3.8	
**4.6	* 5.9	6.0	
70.8	70.5	71.7	70.7	70.2	()
73.6	73.2	73.0	72.2	71.7	()
...	...	28,876	23,890	23,492	
...	...	8.2	7.8	8.4	
...	...	4,211	3,546	3,449	
...	...	1.2	1.2	1.2	
5.5	5.8	5.9	6.1	6.4	
103.1	103.1	102.7	102.2	102.1	
73.7	75.6	90.6	94.3	94.7	
19.4	19.1	17.7	17.4	17.4	
30.1	30.1	34.5	38.8	41.2	
4.2	4.4	4.1	4.6	5.1	
2.7	2.6	3.0	3.4	3.6	
**4.1	* 5.5	5.6	
71.2	70.9	71.7	71.0	70.4	()
74.0	73.7	73.4	72.6	72.2	()
...	19,821	16,706	14,867	15,883	
...	8.1	7.6	7.6	8.9	
...	3,244	2,456	2,120	2,143	
...	1.3	1.1	1.1	1.2	
5.3	5.6	5.8	5.7	6.1	

:() 10

2010	2009	2005	2000	1997	
103.1	103.1	102.5	101.7	101.5	
87.4	89.1	107.0	112.8	114.5	
17.2	17.0	15.4	14.9	14.8	
37.1	36.9	42.2	44.5	45.4	
4.0	4.1	3.9	4.3	4.7	
3.3	3.3	3.8	4.0	4.1	
...	**5.3	...	* 6.8	6.9	
70.2	69.9	71.2	70.4	69.9	()
72.9	72.5	72.3	71.5	71.0	()
...	...	12,170	9,023	7,609	
...	...	9.3	8.1	7.6	
...	...	1,745	1,426	1,306	
...	...	1.2	1.2	1.2	
5.8	6.3	6.2	6.9	6.9	

:(...)

1999 :(*)

2007 :(**)