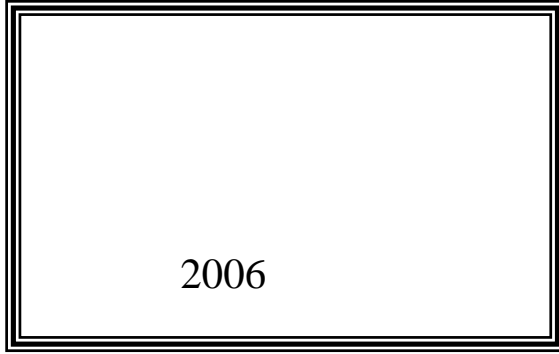


(2010)

2010 /



© 1431 - 2010 .

:

)

2010.

- (2010)

:

- 1647 . .

: 2700 298 (970/972) 2

: 2710 298 (970/972) 2

: 1800300300

: diwan@pcbs.gov.ps

: http://www.pcbs.gov.ps

<hr/>		<hr/>
5	(2010)	.1
9		.2
11		.3

2003-1999

1997

.2010-2004

2004

2010

%22.9

2010

%22.0

%22.2 2010

2009

.%26.0

2008

%24.5

2009

.%23.6

2006

.%21.5

2007

%15.2

2010

%16.5

%15.9

2010

2009

%36.0

%33.9

2010

2009

%39.3

2010

(2010)

2010

*

()

2010

2009

2010

2010

*

*

%9.2

%5.5 2010

*

2004

2009

2010

%6.2

.2010

%3.3

373.4

*

%4.7

2010

2009

%6.0

2007

2007

.(3,797,492)

2010

*

2010

*

:

2009

2010

-

.2009

%16.6

%14.9

-

%9.9

2010

.2009

%6.8

.1967

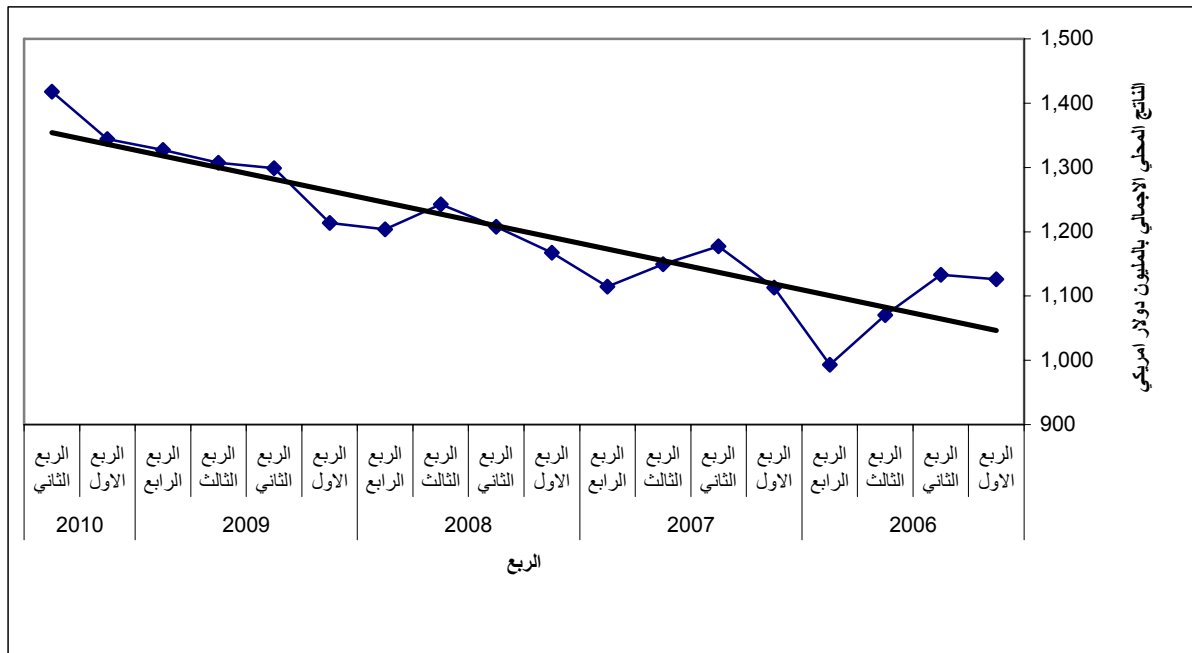
*

2010	%36.2			-
.2009		%28.8		
2010				-
.2009		%14.4	%5.8	
2010				-
.2009		%11.2		%6.4
2010				-
	%12.4		%0.6	
				.2009
2010				-
	%8.9		%5.0	
				.2009
2010		%0.9		-
.2009			%2.8	
2010				-
.2009	%2.7		%0.8	
2010				-
.2009		%11.0	%2.1	

2010-2006

*

:(1)



.1967

*

: (SNA'93) :
 :(Institutional Unit- Enterprise) - -
) :(Establishment) -
 (()
 : :
 : :
 : :

:

:

:

: 2010

*

: 1

2004

Table 1: Value Added in the Palestinian Territory* by Economic Activity, During The First and Second Quarters 2010 at Constant Prices: (2004 is the Base Year)

Value in US\$ Million

Economic Activity	2010		
	*** Q II	** Q I	
Agriculture and fishing	77.9	67.8	
Mining, manufacturing, electr. and water	175.2	194.5	
Construction	137.4	100.9	
Wholesale and retail trade	152.0	143.7	
Transport, Storage and Communications	121.3	114.0	
Financial intermediation	77.9	78.4	
Services	316.7	306.3	
Real estate, renting and business services	113.2	107.8	
Community, social and personal services	27.3	25.2	
Hotels and restaurants	23.4	20.5	
Education	115.0	116.0	
Health and social work	37.8	36.8	
Public administration and defense	201.9	197.7	
Households with employed persons	1.3	1.2	
FISIM	-68.1	-68.3	
Customs duties	85.7	73.9	
VAT on imports, net	138.6	134.2	
Quarterly Gross Domestic Product	1,417.8	1,344.3	

* Excluding that part of Jerusalem, which was annexed after the 1967 occupation by Israel

1967

** First revision

*** Flash Estimates

2004

Table 2: Value Added in the West Bank* by Economic Activity, During The First and Second Quarters 2010 at Constant Prices: (2004 is the Base Year)

Value in US\$ Million

Economic Activity	2010	
	** Q II	** Q I
Agriculture and fishing	60.3	43.3
Mining, manufacturing, electr. and water	160.9	171.7
Construction	101.0	85.5
Wholesale and retail trade	117.5	109.7
Transport, Storage and Communications	107.5	100.4
Financial intermediation	65.5	65.4
Services	187.0	179.8
Real estate, renting and business services	64.0	59.0
Community, social and personal services	19.3	17.5
Hotels and restaurants	22.1	19.3
Education	58.1	61.2
Health and social work	23.5	22.8
Public administration and defense	123.5	119.4
Households with employed persons	1.3	1.2
FISIM	-57.9	-58.1
Customs duties	72.6	62.6
VAT on imports, net	117.4	113.7
Quarterly Gross Domestic Product	1,056.6	994.6

* Excluding that part of Jerusalem, which was annexed after the 1967 occupation by Israel

1967

** Flash Estimates

**

2004

Table 3: Value Added in the Gaza Strip by Economic Activity, During The First and Second Quarters 2010 at Constant Prices: (2004 is the Base Year)

Value in US\$ Million

Economic Activity	2010		
	* Q II	* Q I	
Agriculture and fishing	17.6	24.5	
Mining, manufacturing, electr. and water	14.3	22.8	
Construction	36.4	15.4	
Wholesale and retail trade	34.5	34.0	
Transport, Storage and Communications	13.8	13.6	
Financial intermediation	12.4	13.0	
Services	129.7	126.5	
Real estate, renting and business services	49.2	48.8	
Community, social and personal services	8.0	7.7	
Hotels and restaurants	1.3	1.2	
Education	56.9	54.8	
Health and social work	14.3	14.0	
Public administration and defense	78.4	78.3	
Households with employed persons	0.0	0.0	
FISIM	-10.2	-10.2	
Customs duties	13.1	11.3	
VAT on imports, net	21.2	20.5	
Quarterly Gross Domestic Product	361.2	349.7	

* Flash Estimates

*

*

: 4

2004 : 2010

Table 4: Percentage Contribution to GDP in the Palestinian Territory* by Economic Activity During The First and Second Quarters 2010 at Constant Prices: (2004 is the Base Year)

Economic Activity	2010		
	*** Q II (%)	** Q I (%)	
Agriculture and fishing	5.5	5.0	
Mining, manufacturing, electr. and water	12.4	14.5	
Construction	9.7	7.5	
Wholesale and retail trade	10.7	10.7	
Transport, Storage and Communications	8.6	8.5	
Financial intermediation	5.5	5.8	
Services	22.3	22.8	
Real estate, renting and business services	8.0	8.0	
Community, social and personal services	1.9	1.9	
Hotels and restaurants	1.7	1.5	
Education	8.0	8.7	
Health and social work	2.7	2.7	
Public administration and defense	14.2	14.7	
Households with employed persons	0.1	0.1	
FISIM	-4.8	-5.1	
Customs duties	6.0	5.5	
VAT on imports, net	9.8	10.0	
Total	100	100	

* Excluding that part of Jerusalem, which was annexed after the 1967 occupation by Israel

1967

** First revision

*** Flash Estimates

2004 : 2010

Table 5: Percentage Contribution to GDP in the West Bank* by Economic Activity During The First and Second Quarters 2010 at Constant Prices: (2004 is the Base Year)

Economic Activity	2010	
	** Q II (%)	** Q I (%)
Agriculture and fishing	5.7	4.4
Mining, manufacturing, electr. and water	15.2	17.2
Construction	9.6	8.6
Wholesale and retail trade	11.1	11.0
Transport, Storage and Communications	10.2	10.1
Financial intermediation	6.2	6.6
Services	17.7	18.1
Real estate, renting and business services	6.1	5.9
Community, social and personal services	1.8	1.8
Hotels and restaurants	2.1	1.9
Education	5.5	6.2
Health and social work	2.2	2.3
Public administration and defense	11.7	12.0
Households with employed persons	0.1	0.1
FISIM	-5.5	-5.8
Customs duties	6.9	6.3
VAT on imports, net	11.1	11.4
Total	100	100

* Excluding that part of Jerusalem, which was annexed after the 1967 occupation by Israel

1967

** Flash Estimates

*

**

2004 : 2010

Table 6: Percentage Contribution to GDP in the Gaza Strip by Economic Activity During The First and Second Quarters 2010 at Constant Prices: (2004 is the Base Year)

Economic Activity	2010		
	* Q II (%)	* Q I (%)	
Agriculture and fishing	4.9	7.0	
Mining, manufacturing, electr. and water	4.0	6.5	
Construction	10.1	4.4	
Wholesale and retail trade	9.6	9.7	
Transport, Storage and Communications	3.8	3.9	
Financial intermediation	3.4	3.7	
Services	35.9	36.2	
Real estate, renting and business services	13.5	14.0	
Community, social and personal services	2.2	2.2	
Hotels and restaurants	0.4	0.3	
Education	15.8	15.7	
Health and social work	4.0	4.0	
Public administration and defense	21.7	22.4	
Households with employed persons	0.0	0.0	
FISIM	-2.8	-2.9	
Customs duties	3.5	3.2	
VAT on imports, net	5.9	5.9	
Total	100	100	

* Flash Estimates

*

2004

:

2010 -2009

*

:7

Table 7: Value Added in the Palestinian Territory* by Economic Activity and Quarter for the Years 2009- 2010 at Constant Prices: 2004 is the Base Year

Value In US\$ Million

Economic Activity	2010		2009			
	**** Q II	*** Q I	** Q IV	** Q III	** Q II	** Q I
Agriculture and fishing	77.9	67.8	68.8	54.1	66.8	58.8
Mining, manufacturing, electr. and water	175.2	194.5	190.5	188.8	187.9	187.1
Construction	137.4	100.9	92.2	99.0	106.7	84.9
Wholesale and retail trade	152.0	143.7	145.2	138.4	132.9	134.5
Transport, Storage and Communications	121.3	114.0	115.6	110.5	109.1	110.5
Financial intermediation	77.9	78.4	76.5	74.7	69.3	64.5
Services	316.7	306.3	302.3	306.2	315.0	295.1
Real estate, renting and business services	113.2	107.8	103.7	113.8	124.3	117.1
Community, social and personal services	27.3	25.2	22.6	24.7	25.1	21.8
Hotels and restaurants	23.4	20.5	19.5	19.4	16.2	9.6
Education	115.0	116.0	118.3	111.3	111.9	109.8
Health and social work	37.8	36.8	38.2	37.0	37.5	36.8
Public administration and defense	201.9	197.7	195.3	186.3	181.9	180.4
Households with employed persons	1.3	1.2	1.1	1.2	1.2	1.1
FISIM	-68.1	-68.3	-71.9	-71.0	-67.1	-63.9
Customs duties	85.7	73.9	77.7	80.6	77.4	62.5
VAT on imports, net	138.6	134.2	134.1	138.3	117.7	98.4
Gross Domestic Product	1,417.8	1,344.3	1,327.4	1,307.1	1,298.8	1,213.9

* Excluding that part of Jerusalem, which was annexed after the 1967 occupation by Israel

1967

*

** Preliminary Estimates *** First Revision **** Flash Estimates

**

2004

:

2010-2009

*

:8

Table 8: Percentage Contribution to GDP in the Palestinian Territory* by Economic Activity and Quarter for Years 2009-2010 at Constant Prices: 2004 is the Base Year

Economic Activity	2010		2009			
	**** Q II (%)	*** Q I (%)	** Q IV (%)	** Q III (%)	** Q II (%)	** Q I (%)
Agriculture and fishing	5.5	5.0	5.2	4.1	5.1	4.8
Mining, manufacturing, electr. and water	12.4	14.5	14.4	14.4	14.5	15.4
Construction	9.7	7.5	6.9	7.6	8.2	7.0
Wholesale and retail trade	10.7	10.7	10.9	10.6	10.2	11.1
Transport, Storage and Communications	8.6	8.5	8.7	8.5	8.4	9.1
Financial intermediation	5.5	5.8	5.8	5.7	5.3	5.3
Services	22.3	22.8	22.8	23.4	24.3	24.4
Real estate, renting and business services	8.0	8.0	7.8	8.7	9.6	9.7
Community, social and personal services	1.9	1.9	1.7	1.9	1.9	1.8
Hotels and restaurants	1.7	1.5	1.5	1.5	1.2	0.8
Education	8.0	8.7	8.9	8.5	8.7	9.1
Health and social work	2.7	2.7	2.9	2.8	2.9	3.0
Public administration and defense	14.2	14.7	14.7	14.3	14.0	14.9
Households with employed persons	0.1	0.1	0.1	0.1	0.1	0.1
FISIM	-4.8	-5.1	-5.4	-5.4	-5.2	-5.3
Customs duties	6.0	5.5	5.8	6.2	6.0	5.1
VAT on imports, net	9.8	10.0	10.1	10.5	9.1	8.1
Total	100	100	100	100	100	100

* Excluding that part of Jerusalem, which was annexed after the 1967 occupation by Israel

1967

*

** Preliminary Estimates *** First Revision **** Flash Estimates

**

: 2010-2009 * :9

2004

Table 9: GDP Per Capita in the Palestinian Territory* by the Quarters of the Years 2009-2010 at Constant Prices: (2004 is the Base Year)

Value in US\$

Quarter \ Year	2010	**2009	
First Quarter	***356.6	331.4	
Second Quarter	****373.4	352.1	
Third Quarter	-	351.8	
Fourth Quarter	-	354.6	
Annual Value	-	1,389.9	

* Excluding that part of Jerusalem, which was annexed after the 1967 occupation by Israel

1967

** Preliminary Estimates

**

*** First Revision

**** Flash Estimates

(-) The data is not available

(-)

: 2010 * :10

2004

Table 10: GDP Per Capita in the West Bank* and Gaza Strip by the Quarters, During The First and Second Quarters 2010 at Constant Prices: (2004 is the Base Year)

Value in US\$

Quarter \ Year	** Q2	** Q1	
West Bank	465.8	441.4	
Gaza Strip	236.2	230.5	

* Excluding that part of Jerusalem, which was annexed after the 1967 occupation by Israel

1967

**Flash Estimates

**

Table 11: Value Added in the Palestinian Territory* by Economic Activity for the Years 1999- 2009 at Constant Prices

Value in US\$ Million

Economic Activity	**2009	2008	2007	2006	2005	2004	2003	2002	2001	2000	1999
Agriculture and fishing	248.5	286.1	252.2	240.3	236.2	296.7	297.6	251.3	340.8	403.6	470.7
Mining, manufacturing, electr. and water	754.3	717.5	695.6	665.6	789.1	728.0	657.8	534.7	616.8	545.6	655.5
Mining and quarrying	22.7	21.5	20.8	37.3	40.8	37.7	45.9	25.2	21.2	23.8	35.7
Manufacturing	566.9	539.3	527.8	505.4	591.8	554.0	470.7	385.9	471.7	472.4	566.4
Electricity and water supply	164.7	156.7	147.0	122.9	156.5	136.3	141.2	123.6	123.9	49.4	53.4
Construction	382.8	314.4	299.1	312.3	310.2	238.5	187.2	127.7	205.4	366.3	616.9
Wholesale and retail trade	551.0	544.9	486.8	445.7	451.8	437.5	385.4	408.9	382.8	504.9	537.8
Transport, Storage and Communications	445.7	412.7	399.0	390.0	347.3	348.7	229.9	183.9	209.4	221.0	231.0
Financial intermediation	285.0	280	272.9	184.8	200.5	150.2	154.2	136.3	134.4	181.7	169.1
Services	1,218.6	1,090.4	1,009.1	893.6	1,084.0	984.4	927.9	862.6	896.1	1,050.4	990.8
Real estate, renting and business services	458.9	416.6	387.0	321.9	481.0	454.5	396.3	376.1	404.1	534.0	444.3
Community, social and personal services	94.2	75.5	60.8	52.2	57.3	39.0	51.6	33.5	28.6	29.9	28.3
Hotels and restaurants	64.7	58.5	59.6	62.1	56.3	39.1	73.0	84.2	87.7	136.0	128.0
Education	451.3	404.8	377.7	339.3	375.7	326.1	284.7	260.9	269.4	242.2	262.4
Health and social work	149.5	135.0	124.0	118.1	113.7	125.7	122.3	107.9	106.3	108.3	127.8
Public administration and defense	743.9	685.2	658.8	679.1	641.5	598.7	633.6	545.6	663.7	518.4	497.7
Households with employed persons	4.6	3.7	3.6	2.9	1.8	2.9	8.2	7.4	7.5	9.3	8.7
FISIM	-273.9	-275.3	-257.0	-128.9	-116.5	-114.3	-114.3	-99.6	-114.3	-154.3	-129.5
Customs duties	298.2	286.6	283.8	286.0	265.9	204.0	166.5	87.4	170.0	196.7	208.6
VAT on imports, net	488.5	474.7	450.2	350.9	347.7	323.1	215.6	217.9	252.6	274.9	254.4
Gross Domestic Product	5,147.2	4,820.9	4,554.1	4,322.3	4,559.5	4,198.4	3,749.6	3,264.1	3,765.2	4,118.5	4,511.7

* Excluding that part of Jerusalem, which was annexed after the 1967 occupation by Israel

1967

*

** Preliminary Estimates

**