



Palestinian Producer Price Index, March, 03/2018

Decrease in the Producer Price¹ Index (PPI) during March 2018

The overall Producer Price Index (PPI) for Palestine with its base month (December 2015 = 100) reached 101.62 in March 2018, as it decreased by 1.44% compared to February 2018.

PPI for locally consumed products

Producer Price Index for locally consumed products (December 2015 = 100) reached 101.89 in March 2018, which indicates a decrease by 1.59% compared to February 2018.

PPI for local exported products

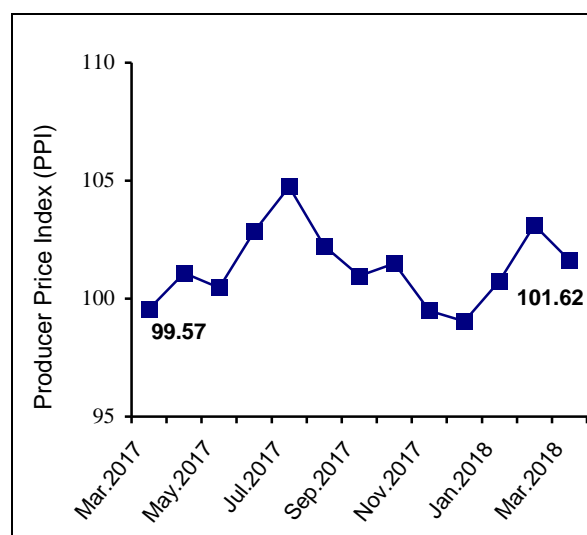
Producer Price Index for local exported products (December 2015 = 100) reached 99.13 in March 2018, which indicates a decrease by 0.12% compared to February 2018.

The changes of PPI for March 2018 were traced back to changes in prices of the following major

The table shows monthly percent change in Palestinian PPI for the period January – March 2018:

Month	Local Products	Exported Products	Total Products
January	+ 1.92	+ 0.09	+ 1.73
February	+ 2.63	- 0.07	+ 2.34
March	- 1.59	- 0.12	- 1.44
Q1. 2018	+ 1.69	- 1.75	+ 1.33

The trend line of the PPI in Palestine, for the period: March 2017 - March 2018 (Base Month December 2015 = 100)



For more information, please contact:
Palestinian Central Bureau of Statistics
P.O BOX 1647, Ramallah, Palestine.
Tel: (972/970) 2 2982700
Fax: (972/970) 2 2982710
Toll free.: 1800300300
E-Mail: diwan@pcbs.gov.ps
Web-Site: <http://www.pcbs.gov.ps>

Major Activities	% Change
Agriculture, forestry and fishing goods	- 5.53%
Water supply; sewerage, waste management and remediation activities	- 4.12%
Electricity, gas, steam and air conditioning supply	-2.91%
Mining and quarrying	- 0.32%
Manufacturing	+ 0.83%

activities compared to the previous month:

¹ The producer's price is the amount receivable by the producer from the purchaser for a unit of a good or service produced as output minus any VAT, or similar deductible tax, invoiced to the purchaser. The producer's prices exclude any transport charges invoiced separately by the producer.