



**Palestinian Central Bureau of Statistics
(PCBS)**

**Increase in the Consumer Price Index
during February,02/2017**

The overall CPI for Palestine during February 2017 increased by 0.62% compared with January 2017 (by 0.78% in the West Bank**, by 0.40% in Gaza Strip, and by 0.35% in Jerusalem J1*).

The changes in Palestinian CPI for February 2017 is traced back to changes in prices of the following expenditure sub groups compared with previous month:

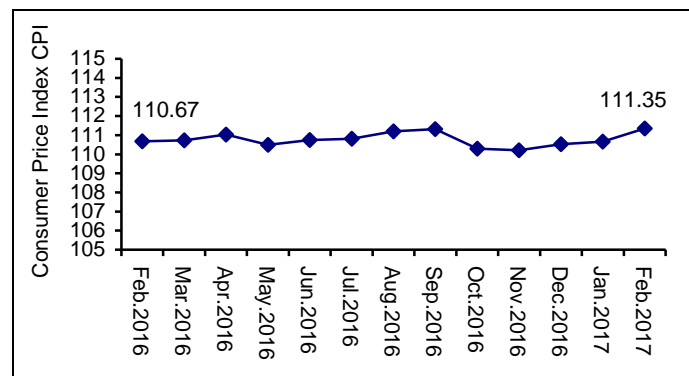
Sub Groups	Change
Fresh Poultry	+ 13.08%
Fresh Fruit	+ 6.03%
Gas	+ 5.18%
Fresh Fish	- 10.59%
Dried Vegetables	- 3.49%
Eggs	- 3.47%
Fresh Vegetables	- 2.13%
Potatoes and other Tubers	- 1.35%

The CPI during February 2017 increased by 0.62% compared with February 2016 (by 4.06% in Jerusalem J1*, and by 1.30% in the West Bank**, while it decreased by 0.49% in Gaza Strip).

The table below shows monthly percent change in CPI by region for the period January 2016 – February 2017:

Month	Monthly Percent Change			
	Palestine	West Bank**	Gaza Strip	Jerusal-em J1*
Jan.16	- 0.66	- 0.64	- 0.70	- 1.67
Feb.16	- 0.26	- 0.56	- 0.04	- 0.51
Mar.16	+ 0.05	- 0.12	- 0.20	+ 0.92
Apr.16	+ 0.28	- 0.26	+ 1.35	- 0.56
May.16	- 0.49	- 0.66	- 0.45	- 0.03
Jun.16	+ 0.22	+ 0.55	- 0.33	+ 1.75
Jul.16	+ 0.07	+ 1.04	- 1.45	+ 0.20
Aug.16	+ 0.35	+ 0.66	+ 0.77	- 0.36
Sep.16	+ 0.10	- 0.20	- 0.14	+ 0.83
Oct.16	- 0.90	- 0.76	- 1.42	+ 0.12
Nov.16	- 0.09	- 0.12	+ 0.26	- 0.10
Dec.16	+ 0.28	+ 0.37	+ 0.37	- 0.13
2016	- 0.22	- 0.08	- 0.84	- 0.96
Jan.17	+ 0.14	+ 0.03	+ 0.38	+ 1.02
Feb.17	+ 0.62	+ 0.78	+ 0.40	+ 0.35

The trend line of Consumer Price Index in Palestine for February 2016 – February 2017 (Base Year 2010=100)



Notes:

*The data of Jerusalem J1 includes that part of Jerusalem governorate which was annexed forcefully by Israel following its occupation of the West Bank in 1967.

**The data of West Bank doesn't include that part of Jerusalem governorate which was annexed forcefully by Israel following its occupation of the West Bank in 1967.

Data collection of Consumer Price Index survey was funded by the European Union.

**For more information, please contact:
Palestinian Central Bureau of Statistics
P.O BOX 1647, Ramallah, Palestine.**

Tel: (972/970) 2 2982700

Fax: (972/970) 2 2982710

Toll free.: 1800300300

E-Mail diwan@pcbs.gov.ps

Web-Site: <http://www.pcbs.gov.ps>