



**Palestinian Central Bureau of Statistics  
(PCBS)**

**The increase in the Consumer Price Index has accumulated over the past two years to reach 5%, by 3.74% in 2022 and by 1.24% in 2021**

**Sharp increase in the Consumer Price Index (CPI) in Palestine during 2022 by 3.74% compared with 2021**

The overall CPI for Palestine during 2022 **Recorded a sharp Increase by 3.74%** compared with 2021 (4.70% in Jerusalem J1\*, 3.74% in the West Bank\*\*, and by 3.16% in Gaza Strip).

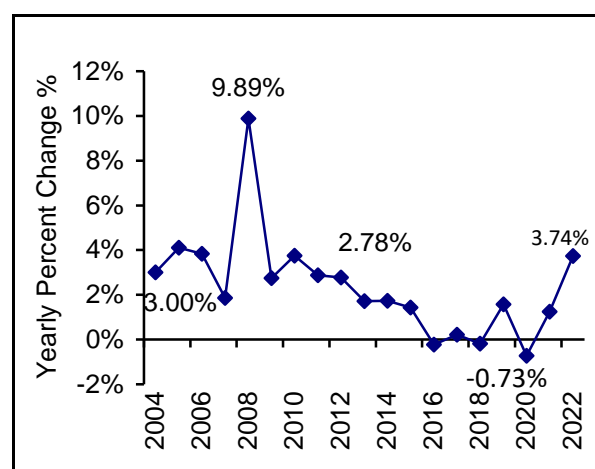
The changes in Palestinian CPI for 2022 were traced back to changes in prices of the following expenditure major and sub groups compared with previous year:

Major and Sub Groups	%Change
<b>Food and Non-Alcoholic Beverages</b>	<b>+ 6.74%</b>
Corn Oil	+ 20.81%
Fresh Vegetables	+ 19.55%
Other Sugar and Sugar Substitutes	+ 16.39%
Eggs	+ 16.13%
Flour of Cereals "White Flour"	+ 14.36%
Potatoes and Other Tubers	+ 13.29%
Bread	+ 12.02%
Other Non-Alcoholic Beverages "Juice"	+ 10.91%
Fresh Chicken	+ 9.46%
Rice	+ 6.07%
Soft Drinks	+ 4.86%
Fresh Meat	+ 2.48%

Major and Sub Groups	%Change
Dried Vegetables	- 5.03%
Fresh Fruit	- 2.25%
<b>Transport</b>	<b>+ 3.05%</b>
Liquid Fuel for Car "Diesel"	+ 13.89%
Liquid Fuel for Car "Petrol"	+ 8.49%
<b>Housing, Water, Electricity, Gas and Other Fuels</b>	<b>+ 2.74%</b>
Gas	+ 6.51%
Actual Rentals for Housing	+ 2.23%
Electricity Tariff	+ 1.58%
<b>Alcoholic Beverages, Tobacco and Narcotics</b>	<b>+ 3.47%</b>
Cigarettes	+ 3.61%

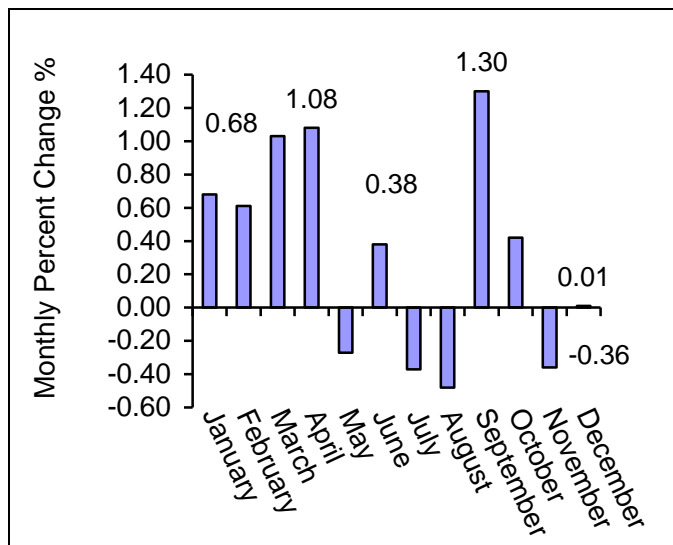
**Consumer Price Index increased by 114% in 1996 and until 2022; an increase of 1,136 NIS/ 1,000 NIS of the monthly wages, and if it is calculated since 2004, the CPI is increased by 56%; an increase of 559 NIS/ 1,000 NIS of the monthly wages.**

**Yearly percent changes in Consumer price index in Palestine for: 2004 – 2022**





### Monthly percent changes in Consumer price index in Palestine for the months of 2022



#### Notes:

\*Data represent those parts of Jerusalem, which were annexed by Israeli Occupation in 1967.

\*\*Data exclude those parts of Jerusalem, which were annexed by Israeli Occupation in 1967.

Please note that the press release in English is brief compared to the Arabic version

#### For more information, please contact:

Palestinian Central Bureau of Statistics  
P.O BOX 1647, Ramallah P6028179,  
Palestine.

Tel: (972/970) 2 2982700

Fax: (972/970) 2 2982710

Toll free.: 1800300300

E-Mail [diwan@pcbs.gov.ps](mailto:diwan@pcbs.gov.ps)

Web-Site: <http://www.pcbs.gov.ps>