

**Palestinian National Authority  
Palestinian Central Bureau of Statistics**

**Labour Force Survey  
(April - June, 2012) Round  
(Q2/2012)**

**Press Report on the  
Labour Force Survey Results**

15/8/2012

**This document is prepared in accordance with the standard procedures stated  
in the Code of Practice for Palestine Official Statistics 2006**

©August, 2012  
**All Rights Reserved.**

**Suggested Citation:**

**Palestinian Central Bureau of Statistics, 2012.** *Labour Force Survey: (April - June, 2012) Round, (Q2/2012). Press Report on the Labour Force Survey Results.* Ramallah - Palestine.

All correspondence should be directed to:  
**Palestinian Central Bureau of Statistics**  
**P.O.Box 1647, Ramallah, Palestine.**

Tel: (972/970) 2 298 2700  
Fax: (972/970) 2 298 2710  
Free No: 1800300300  
E-Mail :diwan@pcbs.gov.ps  
Web-Site: <http://www.pcbs.gov.ps>

## Table of contents

<b><u>Subject</u></b>	<b><u>Page</u></b>
<b>Main Results</b>	<b>[5]</b>
<b>Concepts and Definitions</b>	<b>[9]</b>
<b>Tables</b>	<b>11</b>

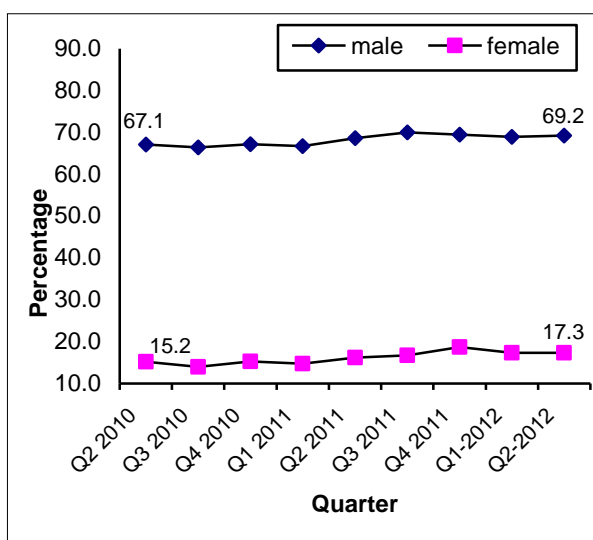
## Main Results

### The labour force participation rate of persons aged 15 years and above was 43.6%

The number of persons participating in the labour force in the Palestinian Territory was about 1.109 million in the 2<sup>nd</sup> quarter 2012: about 738 thousand in the West Bank and about 371 thousand in Gaza Strip.

The labour force participation rate in the West Bank was 45.4% and 40.3% in Gaza Strip, the gap in the participation rate between males and females still very big it reached 69.2% for males compared with 17.3% for females.

### Labour Force Participation Rate in the Palestinian Territory by Sex: Q2-2010- Q2-2012

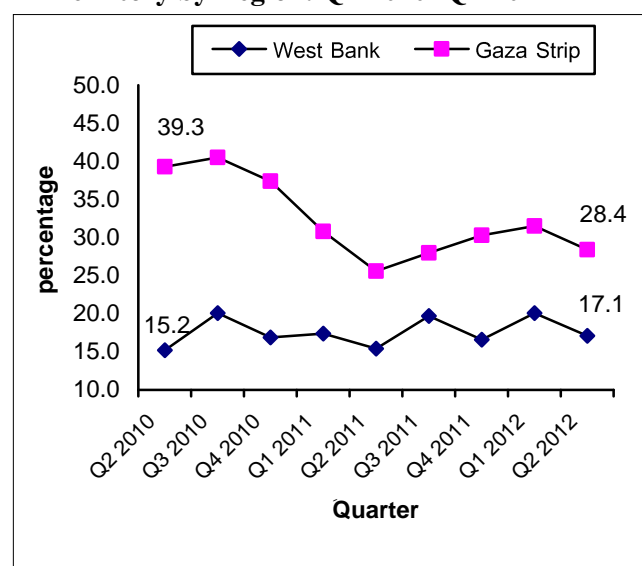


### 20.9% the unemployment rate among labour force participants

Using ILO standards, the number of unemployed was about 232 thousand in the 2<sup>nd</sup> quarter 2012: about 127 thousand in the West Bank and about 105 thousand in Gaza Strip.

The unemployment rate in Gaza Strip was 28.4% compared with 17.1% in the West Bank, and the unemployment rate for males in the Palestinian Territory was 18.8% compared with 29.5% for females.

### Unemployment Rate in the Palestinian Territory by Region: Q2-2010- Q2-2012



The highest unemployment rate in the 2<sup>nd</sup> quarter 2012 was 35.6% among youth aged 20-24 years. For years of schooling, the unemployment rate among females with 13 years of schooling or more was 42.6%.

The highest unemployment rate in the West Bank governorates was in Tulkarm with 25.7%. In Gaza Strip, the highest unemployment rate was 31.5% in Deir Al Balah governorate.

According to the relaxed definition of unemployment, the unemployment rate decreased from 27.4% in the 1<sup>st</sup> quarter 2012 to 24.9% in the 2<sup>nd</sup> quarter 2012.

### Increased the number of employment in local market between the 1<sup>st</sup> quarter 2012 and 2<sup>nd</sup> quarter 2012

The number of employed in the local market increased from 756 thousand in the 1<sup>st</sup> quarter 2012 to 797 thousand in the 2<sup>nd</sup> quarter 2012. The number of employed persons in the West Bank increased by 24 thousand, and the number of employed persons in Gaza Strip increased by 17 thousand.

The services sector was the biggest employer in the local market with 31.2% in the West Bank and 51.6% in Gaza Strip.

The public sector employed 21.9% of those in employment: 37.9% in Gaza Strip and 14.9% in the West Bank.

The average daily wage for waged employees in the West Bank was 87.4 NIS compared with 64.3 NIS in Gaza Strip.

The average number of hours worked by waged employees in the West Bank was 43.0 per week in the 1<sup>st</sup> quarter 2012 compared with 43.8 in the 2<sup>nd</sup> quarter 2012. The average number of days worked per month decreased from 22.4 to 22.3 over the same period. The average number of hours worked per week in Gaza Strip was 36.9 in 1<sup>st</sup> quarter 2012 compared with 37.8 in 2<sup>nd</sup> quarter 2012, while the average number of days worked per month increased from 23.5 to 23.6 days over the same period.

#### Number of workers employed in Israel and Israeli settlements about 80 thousand in the 2<sup>nd</sup> quarter 2012

The number of workers from the West Bank employed in Israel and Israeli settlements increased from 77 thousand in the 1<sup>st</sup> quarter 2012 to 80 thousand in the 2<sup>nd</sup> quarter 2012. Of these, 41 thousand had a permit, 22 thousand worked without a permit, and 17 thousand workers have an Israeli identity card or foreign passport. The number of employees in Israeli settlements increased from 13 thousand in 1<sup>st</sup> quarter 2012 to 15 thousand in 2<sup>nd</sup> quarter 2012.

56.9% of workers employed in Israel and Israeli settlements work in the construction sector.

The average daily wage for persons employed in Israel and Israeli settlements increased from 162.0 NIS in the 1<sup>st</sup> quarter 2012 to 163.2 NIS in the 2<sup>nd</sup> quarter 2012.

The average number of hours worked per week increased from 41.2 in the 1<sup>st</sup> quarter 2012 to 41.8 in the 2<sup>nd</sup> quarter 2012. The average number of days worked per month

decrease from 20.7 in the 1<sup>st</sup> quarter 2012 to 20.3 in the 2<sup>nd</sup> quarter 2012.

#### Employment status in the 2<sup>nd</sup> quarter 2012

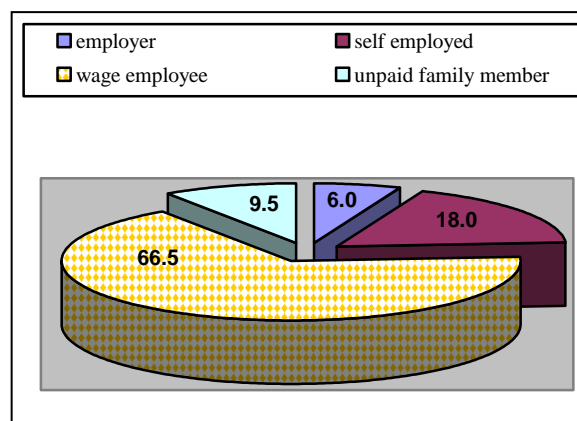
66.5% of employed workers in the Palestinian Territory are waged employees: 63.1% in the West Bank compared with 74.2% in Gaza Strip.

18.0% of employed persons are self-employed; 19.0% in the West Bank and 15.5% in Gaza Strip.

9.5% of employed persons are unpaid family members: 10.7% in the West Bank and 7.1% in Gaza Strip.

6.0% of employed persons are employers: 7.2% in the West Bank and 3.2% in Gaza Strip.

**Percentage Distribution of Employed Persons in the Palestinian Territory by Employment Status: April - June, 2012**



#### Working benefits for waged employees in the private sector

26.5% of waged employees are hired by contract, compared with 47.3% hired without a contract.

22.9% of waged employees contribute to a pension fund; 23.8% have annual paid vacation; 49.5% of wage employees women have paid maternity leave.

30.4% of employed persons in the Palestinian Territory are affiliated to a workers vocational union: 32.0% of males and 23.1% of females.

**4.8% of children aged 10-17 years are employed in the Palestinian Territory**  
4.8% of children aged 10-17 years are employed in the Palestinian Territory: 7.1% in the West Bank and 1.4% in Gaza Strip.

All correspondence should be directed to:  
**Palestinian Central Bureau of Statistics**  
**P.O.Box 1647, Ramallah, Palestine.**

Tel: (972/970) 2 298 2700  
Fax: (972/970) 2 298 2710  
Free No: 1800300300  
E-Mail :diwan@pcbs.gov.ps

## Concepts and Definitions

### **Man power**

All persons in the West Bank and Gaza Strip aged 15 years and over.

### **Reference week:**

The week ending on Friday preceding the interviewer's visit to the household.

### **Employed:**

All persons are 15 years and over who were working at a paid job or business for at least one hour during the reference week, or who did not work, but held a job or owned business from which they were temporarily absent (because of illness, vacation, temporarily stoppage, or any other reason) during the reference week. Employed persons are classified according to employment status as follows:

1. Employer
2. Self-employed
3. Employee
4. Unpaid family member

### **Unemployed (According to the ILO Standards):**

Unemployed persons are those individuals 15 years and over who did not work at all during the reference week, who were not absent from a job and were available for work and actively seeking a job during the reference week. Persons who work in Israel and were absent from work due to closure are considered unemployed, and also those persons never work and not looking for work but waiting to return back to their works in Israel and Settlements.

### **Unemployed (According to the Relaxed Definition):**

The number of unemployed persons was calculated under the relaxed definition by adding to unemployed persons according to the ILO Standards, those persons outside labour force because they were frustrated

### **Labour force:**

The economically active population (Labour Force) consists of all persons 15 years and over who are either employed or unemployed as defined above at the time of survey.

### **Underemployment:**

Underemployment exists when a person's employment is inadequate in relation to alternative employment, account being taken of his/her occupational skills.

### **Persons outside labour force:**

The population not economically active comprises all persons 15 years and over, who were neither employed nor unemployed accordingly to the definitions above.