



Palestinian Producer Price Index

Increase in the PPI during 2012

The overall Producer Price¹ Index (PPI) for the Palestinian Territory with its base month (January 2011=100) reached 101.81 in 2012, it increased by 3.33% compared to 2011.

Prices of Producer Price Index for 2012 increased due to the increase of agriculture group by 5.26%, and manufacturing group by 2.40%.

The price of exported products increased by 4.46%, and the price of locally consumed products increased by 3.22%.

Decrease in the PPI during December 2012

The overall Producer Price Index (PPI) for the Palestinian Territory with its base month (January 2011=100) reached 102.43 in December 2012, it decreased by 0.33% compared to November 2012.

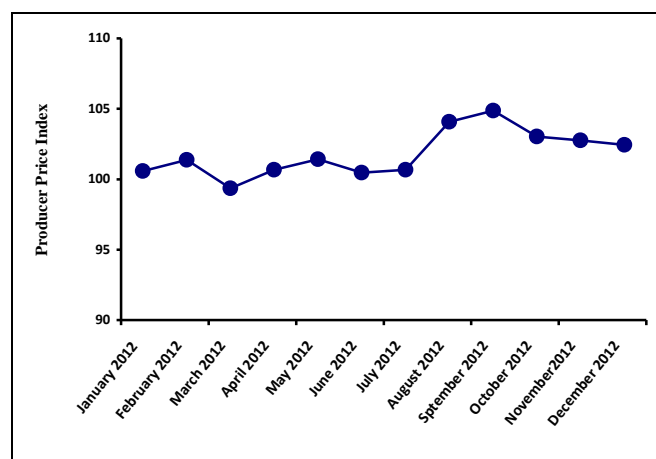
Producer Price Index for exported products (January 2011=100) reached 105.42 in December 2012, which indicates an increase by 0.34% compared to November 2012.

Producer Price Index for locally consumed products (January 2011=100) reached 102.13 in December 2012, which indicates a decrease by 0.39% compared to November 2012.

The changes of Producer Price Index for December 2012 is traced back to changes in prices of following major activities compared to the previous month:

Major Groups	%Change
Agriculture goods:	- 1.46%
Fishing:	+ 1.70%
Manufacturing group:	+ 0.30%
Mining and quarrying:	0.00%

The trend line for the Producer Price Index in the Palestinian Territory, for the period: January 2012 - December 2012 (Base Month January 2011=100)



**For more information, please contact:
Palestinian Central Bureau of Statistics
Ramallah, Palestine.**

Tel: (972/970) 2 2982700

Fax: (972/970) 2 2982710

Toll free.: 1800300300

E-Mail diwan@pcbs.gov.ps

Web-Site: <http://www.pcbs.gov.ps>

¹ The producer's price is the amount receivable by the producer from the purchaser for a unit of a good or service produced as output minus any VAT, or similar deductible tax, invoiced to the purchaser. The producer's prices exclude any transport charges invoiced separately by the producer.