

**2003**

:

1

---

**2003/5/31**

<b>3</b>			<b>1</b>	
<b>3</b>			<b>2</b>	
<b>5</b>			<b>3</b>	
5			1-3	
6			2-3	
9			3-3	
10			4-3	
16			5-3	
16			6-3	
<b>17</b>			<b>4</b>	
17			1-4	
18			2-4	
24			3-4	
26			4-4	
27			5-4	
30			6-4	
<b>31</b>			<b>5</b>	
31	(2003	-	)	1-5
31		2003	-	2-5
<b>31</b>			<b>6</b>	
<b>34</b>			<b>7</b>	
<b>35</b>				
<b>36</b>				

: .1

2003	2002		
)	1995		
2003	%31.3	2002	%27.0
(2003	%28.5	2002	%28.0

2002

:

- .1
- .2
- .3
- .4

.2

:

:

- .1
- .2
- .3
- .4

.5  
.6

:  
.1  
.2  
.3  
.4  
.5  
.6

23000 ) 7500 <sup>2</sup>2003 2000  
.( 15

		( )
	x	2001
	x	2001
x		2002
x		2002
	x	2002
	x	2002
x		2003
x		2003

(control-group)

2002 2001  
2003 2002  
( ) 2003

2003  
.( )

rotated sample

.%25

%50

: 2003-2001

						( )
7559	481	2494	157	5065	324	2001
7559	481	2494	157	5065	324	2001
7559	481	2494	157	5065	324	2001
7559	481	2494	157	5065	324	2001
7559	481	2494	157	5065	324	2002
7559	481	2494	157	5065	324	2002
7559	481	2494	157	5065	324	2002
7559	481	2494	157	5065	324	2002
7563	480	2494	157	5069	323	2003

: 2003-2001

						( )
1463	92	2743	177	3353	212	2001
1463	92	2743	177	3353	212	2001
1463	92	2743	177	3353	212	2001
1463	92	2743	177	3353	212	2001
1463	92	2743	177	3353	212	2002
1463	92	2743	177	3353	212	2002
1463	92	2743	177	3353	212	2002
1463	92	2743	177	3353	212	2002
1463	92	2743	176	3353	212	2003

.2003

2-3

:

.( ) .1

.2

( ) .3

.4

) .5

.(

:

.1

.2

.3

.(2003 ) .4

.2003

66

102



	12		
	14		
	6		
	15		
	14		
	8		
	16		
( )	7		
	10		
	34		
	14		
	9		
	9		
	<b>168</b>		

:

2003

.1

•

( )

•

.( )

•

%28.5

•

40

.2

.3

.4

(8 3) : .5

%85 : .6

( 25) %4 :PW03-PW01 .7

6 %1

16 2003/4/2

10

: .8

7 3 : .9

PW12 PW11 .10

%90.4	%93.8	%88.5	%96.3	%81.2	
%74.0	%83.2	%61.5	%87.0	%54.5	
%71.5	%78.2	%71.4	%83.7	%51.6	
%97.8	%98.1	%98.1	%100.0	%96.0	
%94.7	%92.8	%88.5	%100.0	%99.0	
%47.0	%48.1	%21.2	%55.6	%53.5	
%96.2	%96.2	%91.7	%100.0	%96.8	
%94.5	%95.1	%85.4	%97.2	%97.1	
%64.0	%63.6	%61.0	%88.9	%53.6	
%79.9	%79.6	%75.6	%97.2	%73.9	
%91.0	%88.8	%90.2	%97.2	%92.8	( ) PW01
%98.6	%99.1	%96.6	%100.0	%98.0	( ) PW02
%100.0	%100.0	%100.0	%100.0	%100.0	( ) PW03
%89.7	%88.9	%85.7	%100.0	%89.5	
<b>%85.0</b>	<b>%86.1</b>	<b>%79.7</b>	<b>%93.1</b>	<b>%81.3</b>	

:

: .1

: .2

: .3

)

(

: .4

: " "


	( ) ( ) (2003)
--	----------------------

3-3

2003

( )

PW02

( )

4-3

(ISIC-Rev3)

(ISCO-88)

:<sup>3</sup>

60

290

%50

136-75

---

3

( )

%50

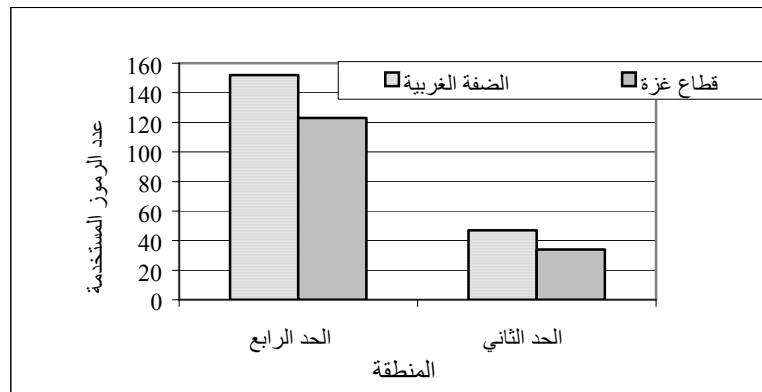
161-126

								( )
%71.6	43	%46.9	136	%81.6	49	%55.5	161	2000
%55.0	33	%28.9	84	%66.7	40	%47.5	138	2002
%56.7	34	%33.4	97	%76.7	46	%53.4	155	2002
%58.3	35	%34.1	99	%86.6	52	%53.4	155	2003
%43.3	26	%25.8	75	%70.0	42	%43.4	126	2003
%62	37	%44.5	129	%81.6	49	%65.5	190	2002

%60

%80

2003-2001 :



								( )
%96.2	26	%77.4	89	%100.0	27	%86.0	99	2000
%81.4	22	%66.9	77	%100.0	27	%80.8	93	2002
%96.2	26	%69.6	80	%88.9	24	%84.4	97	2002
%88.8	24	%70.4	81	%96.2	26	%86.0	99	2003

%85.2	23	%61.7	71	%92.5	25	%77.4	89	2003
-------	----	-------	----	-------	----	-------	----	------

2002

		.1	.1
		.2	
	( )	.3	.2
		.4	.3
			.4
		.5	
		.6	
		.7	
		.8	
		.9	
		.10	
		.11	
		.12	
	( )	.13	

(control group)

.2002 2001  
 .2002 2001 2001  
 :

2002 "

:

) (232 )

(331 ) (233

(345 ) (343 )

" (411 )



( )

( )

	WB	GS	PT
$P(X_t=x/X_{t-1}=x)=$	0.63	0.86	0.75
$P(X_t=232/X_{t-4}=x)=$	0.41	0.77	0.59
$P(X_t=x/X_{t-5}=x)=$	0.50	0.68	0.59
$P(X_t=x/X_{t-1}=x \ \& \ X_{t-4}=x)=$	0.32	0.59	0.46

27 26 23 =t ) :t  
 .2001 23=t

( )

( )

( )

( )

( )

	WB	GS	PT
$P(X_t=x/X_{t-1}=x)=$	0.82	0.87	0.80
$P(X_t=232/X_{t-4}=x)=$	0.64	0.74	0.68
$P(X_t=x/X_{t-5}=x)=$	0.77	0.68	0.75
$P(X_t=x/X_{t-1}=x \ \& \ X_{t-4}=x)=$	0.60	0.6	0.60

27 26 23 =t ) :t  
 .2001 23=t

(<sup>4</sup> )

	WB	GS	PT
$P(X_t=x/X_{t-1}=x)=$	0.87	0.96	0.91
$P(X_t=232/X_{t-4}=232)=$	0.87	0.91	0.89
$P(X_t=x/X_{t-5}=x)=$	0.96	0.82	0.87
$P(X_t=x/X_{t-1}=x \ \& \ X_{t-4}=x)=$	0.87	0.87	0.87

27 26 23 =t ) :t  
 .2001 23=t

( ) %87

4

:

2001

"

:

(8021 ) (8010 )  
 ".(8511 ) (8022 )

( )

)

4

.(

( )

	WB	GS	PT
$P(X_t=x/X_{t-1}=x)=$	0.79	0.89	0.81
$P(X_t=232/X_{t-4}=x)=$	0.73	0.71	0.72
$P(X_t=x/X_{t-5}=x)=$	0.67	0.73	0.70
$P(X_t=x/X_{t-1}=x \ \& \ X_{t-4}=x)=$	0.52	0.59	0.55

27 26 23 =t ) :t  
.2001 23=t

.%60

( )

	WB	GS	PT
$P(X_t=x/X_{t-1}=x)=$	0.92	1.00	0.96
$P(X_t=232/X_{t-4}=232)=$	0.98	0.98	0.98
$P(X_t=x/X_{t-5}=x)=$	0.96	0.98	0.97
$P(X_t=x/X_{t-1}=x \ \& \ X_{t-4}=x)=$	0.90	0.90	0.90

27 26 23 =t ) :t  
.2001 23=t

( )

.%90

)

(<sup>5</sup>

	WB	GS	PT
$P(X_t=x/X_{t-1}=x)=$	0.96	1.00	0.98
$P(X_t=232/X_{t-4}=232)=$	0.98	0.98	0.98
$P(X_t=x/X_{t-5}=x)=$	0.96	1.00	0.98
$P(X_t=x/X_{t-1}=x \ \& \ X_{t-4}=x)=$	0.92	0.96	0.94

27 26 23 =t ) :t  
 .2001 23=t

5-3

2003

:

.1

.2

688 200

(%0.5 )

6-3

:( ) : ( )  
 : ( ) : ( ) : ( ) : ( )  
 : ( ) : ( ) : ( ) : ( ) : ( )  
 : ( ) : ( ) : ( ) : ( ) : ( )

5

.4

1-4

(Test-group)

( )

2003

99.2	25339	98.8	25,217	88.8	22,673	88.2	22,628	
98.3	15,011	98.3	15,012	98.3	15,012	98.3	15,012	
98.9	40,350	98.6	40,229	92.4	37,685	92.3	37,640	

Digit

"5" " " " Preference  
5 62 63 64 65 60

."Age Heaping"

(2003 )

"Myeres Index"

.2000

1995

2003  
2000                      1995

6

2000	1995	2003	
4.47	6.4	4.88	
101.87	-	113.11	
102.66	-	94.83	
102.26	100	103.78	

2000                      1995    1997

2000                      %8.9                      2000  
) 2000                      %73    .%9.0  
2003                      %77                      (

2003	2000	1997	1995	
103	102	103	105	
44.5	46.9	47.0	46.5	15
4.0	3.4	3.5	3.4	+65
16.0	16.0	16.0	16.0	
11.4	9.0	9.0	7.7	

2003

---

6

2001

:

2003

2002

%60

%.76

2002

**2002/2001**

**15**

2002	2002	2001	2001	
3265	3265	3265	3265	15
%40.0	%39.2	%38.4	%37.5	
%71.1	%60.0	%69.2	%71.1	
28.9	%39.0	%30.7	%28.9	
%80	%81	%88	%82	PW01
%13	%11	%9	%5	PW02
%83	%86	%92	%91	PW01
%6	%5	%4	%4	PW02
%90	%90	%80	%87	

PW01

filter

PW02

PW01

PW01

.PW01



الأفراد 15 سنة فأكثر الذين تم استقصاؤهم في الأرباع الثالث والرابع 2002/2001 حسب بعض المؤشرات الأساسية

<sup>7</sup> 2003	2003	2002	2002	
1135	1135	1135	1135	15
%39.3	%37.1	%36.2	%37.4	
%81.2	%72.4	%68.8	%72.4	
%18.8	%27.6	%31.2	%27.6	
%80	%79	%68	%84	PW01
%18	%15	%11	%12	PW02
%83	%82	%76	%92	PW01
%18) %14 (	%21) %12 (	%4	%5	PW02
%92	%91	%88	%86	

8

( ) PW02

2003

7

PW02

8

**PW02**

<sup>9</sup>2003

- 2003/2002	- 2002/2001	- 2003/2002	- 2002/2001	
0	0	20	13	
1	3	0	0	
0	0	0	2	
0	0	2	0	
1	3	8	9	
0	0	9	8	
0	0	0	1	
0	0	0	0	
0	0	2	0	
0	0	1	0	
0	0	1	0	
0	0	6	4	
1	2	3	0	
0	1	3	1	
0	0	1	0	/
0	0	1	3	( ) /
0	0	0	3	
0	0	1	0	
0	0	0	1	
0	0	0	1	
0	0	0	1	
0	0	1	0	

%5

**PW01**

.2002

PW02

%94	%91	%100	2001
%89	%81	%98	2002
%93	%93	%93	2002
%96	%100	%92	2002
%93	%100	%83	2003
%89	%100	%75	2003

:

:

$$\dot{E}_t = E_c + E_s + E_n \dots\dots\dots (1)$$

(E<sub>s</sub>)

(E<sub>c</sub>)

(E<sub>t</sub>)

(E<sub>n</sub>)

	E <sub>n</sub>	E <sub>s</sub>	E <sub>c</sub>		E <sub>n</sub>	E <sub>s</sub>	E <sub>c</sub>	
100	27.3	19.3	53.4	100	23.3	12.3	64.4	2001
100	25.1	11.8	63.1	100	23.5	11.5	65.0	2002

2001

22

10

2002

2001

2003

2002

2002

24

: E<sub>s</sub>

: E<sub>c</sub><sup>11</sup>

: E<sub>n</sub>



.1

)  
.13(-0.81 )

(-0.97

.2

/

2002

2002

2003

2002

.3

:

( )

:

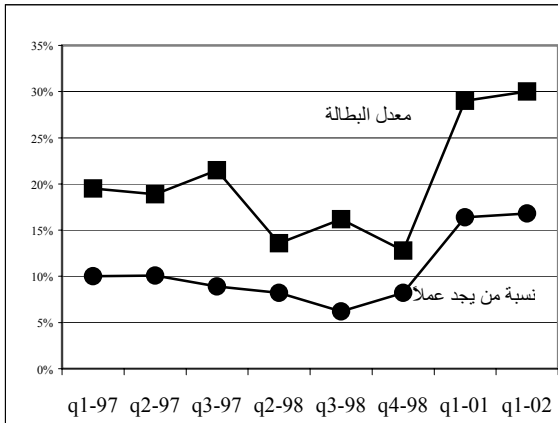
)

(

(2002

6.5 )

2000



.2001

3-4

significant

13

.%5

%1

(labour shock)

(<sup>14</sup> )  
( )

2001						2001
100.0	10.0	0.0	0.0	56.7	33.3	
100.0	12.9	0.7	3.6	78.6	4.3	
100.0	7.9	2.6	76.3	10.5	2.6	
100.0	7.1	91.0	0.5	0.9	0.5	
2002						2002
100.0	0.0	0.0	4.8	38.1	57.1	
100.0	8.2	1.5	0.0	84.3	6.0	
100.0	15.9	0.0	77.3	6.8	0.0	
100.0	7.0	95.7	0.5	1.6	0.5	

:

.1

.2

1996

.3

( )

:



0.0	2.0	9.0	4.4	5.5	3.2	2002
0.1	2.6	10.5	11.0	4.2	7.1	2002
0.0	5.8	12.6	10.7	4.7	5.2	2003
0.0	4.9	16.3	11.7	5.0	5.7	2003

) :611

.(

:612

.(

( )

:621

:

( )

.1

2002 2000

.2

2001

2003

.3

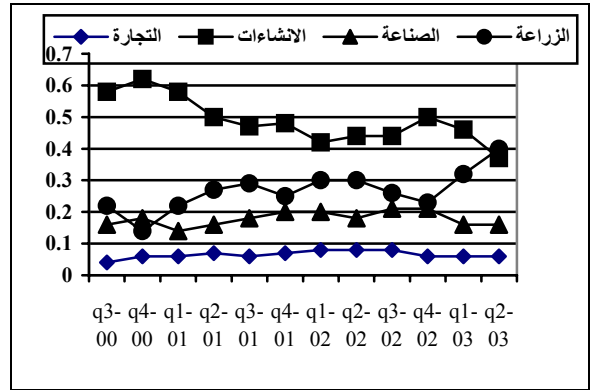
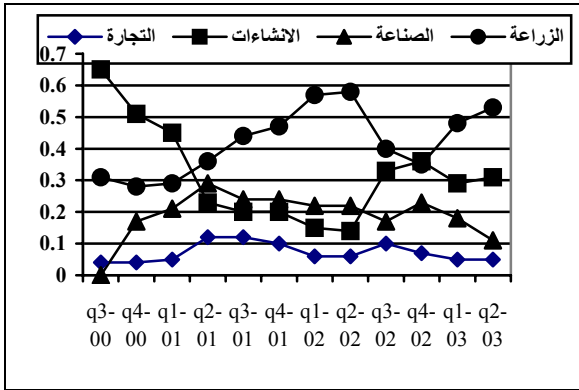
**5-4**



2003-2001 :

( )											( )
8021	8010	6519	5220	4540	4520	2811	2696	1810	0121	0112	
2.6	3.8	0.6	1.1	6.7	17.0	1.7	2.0	2.7	4.0	4.8	2000
2.3	4.3	0.5	1.7	5.7	16.0	1.4	1.9	1.9	2.5	2.4	2000
1.8	4.0	0.6	1.6	6.1	16.1	1.3	2.0	2.1	4.3	4.2	2001
3.1	5.5	0.7	1.5	4.6	12.0	1.6	2.4	2.7	5.2	3.8	2001
2.9	5.3	0.6	1.5	4.8	12.4	1.7	2.6	2.6	5.7	4.9	2001
3.4	4.9	0.7	1.6	4.3	12.0	1.1	2.1	2.5	4.6	3.8	2001
3.0	5.9	0.7	1.5	3.6	8.5	1.3	2.4	2.2	5.0	3.6	2002
2.0	6.3	0.7	2.1	5.1	9.5	1.6	1.5	2.2	5.7	4.2	2002
3.2	6.0	0.9	1.1	3.7	7.2	2.3	1.9	1.9	3.5	3.0	2002
2.8	5.0	0.5	1.2	4.7	9.9	1.2	2.0	1.9	3.5	3.1	2002
2.8	5.1	0.3	1.6	4.4	9.9	1.3	2.1	2.3	5.5	4.6	2003
2.5	5.0	0.4	1.7	4.9	8.2	1.8	2.2	1.6	7.7	6.4	2003
1.1	5.6	0.2	1.1	3.5	18.2	1.2	0.1	5.0	0.5	9.9	2000
1.3	4.7	0.1	1.3	4.0	14.6	1.8	0.1	5.9	0.1	9.9	2000
1.2	6.5	0.2	1.5	4.2	12.2	1.3	0.0	5.1	0.2	10.3	2001
1.6	8.5	0.3	2.4	1.2	3.8	1.0	0.0	4.5	0.4	7.6	2001
1.8	9.1	0.3	2.5	1.2	3.5	0.9	0.0	3.9	0.4	9.7	2001
1.8	9.0	0.1	2.0	1.8	2.2	0.6	0.0	5.4	0.2	9.3	2001
1.5	7.7	0.2	1.4	1.5	2.5	0.9	0.0	4.7	0.9	14.3	2002
1.4	8.9	0.6	1.0	1.3	2.3	0.6	0.0	2.9	0.5	14.5	2002
1.4	7.9	0.5	1.5	1.6	5.0	1.0	0.1	6.2	0.2	8.0	2002
1.2	6.9	0.3	1.9	2.9	8.7	1.3	0.1	5.2	0.2	11.0	2002
0.9	6.4	0.2	1.8	2.3	8.2	1.0	0.0	3.7	0.9	16.5	2003
1.0	5.5	0.4	1.7	3.4	9.6	1.3	0.0	3.7	0.8	21.7	2003

:0112  
:0121  
:1810  
:2696  
:2811  
:4520  
:4540  
:5220  
:6519  
:8010  
:8021



1.

2.

( $\rho_{xy}$ )

$\rho_{xy} =$	1.00			
	-0.10	1.00		
	-0.90*	-0.32	1.00	
	0.22	0.50	-0.52	1.00

\* %1

$$\rho_{xy} = \begin{bmatrix} 1.00 & & & & \\ 0.25 & 1.00 & & & \\ -0.83^* & -0.74 & 1.00 & & \\ 0.17 & 0.67 & -0.60 & 1.00 & \\ & & & & & 1.00 \end{bmatrix}$$

\* %5

6-4

)

%21

( )

%31

**2003-2000 :**

						( )
14.0	19.8	64.6	25.7	6.6	67.7	2000
1.6	22.8	74.9	8.5	7.4	84.0	2000
1.2	22.1	76.0	17.2	7.2	75.6	2001
1.6	24.9	73.5	17.3	8.2	74.5	2001
1.9	22.8	75.3	16.4	7.7	75.9	2001
1.4	21.0	77.6	16.8	7.7	75.5	2001
1.2	19.6	79.2	14.6	8.1	77.3	2002
1.6	19.1	79.3	9.4	6.9	83.6	2002
1.9	21.1	77.0	12.4	9.1	78.5	2002
4.5	15.6	79.9	10.6	10.1	79.4	2002
3.8	15.1	81.1	11.6	8.4	80.0	2003
3.1	12.4	84.6	12.3	5.9	81.8	2003

.5

(2003 - ) 1-5

:( ) 3136 2003

%39.7 2002 %42.1 .1

.2003 %41.3 2003

%35.3 2003 %37.2 .2

(%33.6 2002 ) 2003

26.4) .3

.( %24.4 %22.7) .4

%15.2) .5

.( %14.1

2003 - 2-5

968 2033 3001

:

6.7	7.3	
23.6	22.8	12
63.0	79.4	12
42.2	39.0	12
51.2	64.8	12
16.1	29.3	
1200	1500	2003

.6

2003

2002

.1

.2

.3

.4

.5

.6

.7

.8

( )

.9

.10

.11

.12

.13

.14

.15

.16

.17

( )

2002 .18  
.( %28.0 %27.0)  
2002 2001

.7

.2003 .1

.2

.3

.4

.5

.6

9-1 6-1

.7

.8

.9

.10

.11

	.1
	.2
	.3
.( )	.4
	.5
	.6
.(UNSCO)	.7
.(UNSCO)	.8
.(UNSCO)	.9
.(UNSCO)	.10
	.11
	.12
	.13
	.14
	.15
	.16
	.17



	.2003	.1
	.1997	.2
	.1997	.3
	.1996	.4
	.2000 ( )	.5

6. Adamantions Diamantopoulos and Bodo Schlegelmuich, 1997. Taking fear out of data analysis. The Dryden Press.
7. Judith T. Lesser, William D. Kalsbeek, 1992. Non sampling Error in Surveys. Wiley series in probability and mathematical statistics.
8. Cheng Hsiao, 1986. Analysis of panel data. Econometric society monograph. University of Wisconsin.
9. Michael S. Lewis-Beck, 1994. Factor Analysis and related techniques. SAGE publications. Toppan publishing.
10. IRD Institute for resource development, 1990. An assessment of DHS-I data quality. Methodological reports 1. U.S.A
11. Mark Kinack, 2001. Measuring data quality with longitudinal data. Statistics Canada.
12. Pual P. Biemer, 2000. Estimating the error in labor force data using Marcov Latent Class analysis. Research Triangle Institute and U.S Census Bureau. U.S.A.
13. Craig H. McLaren, 1999. The effect of different rotation patterns on the sampling variance of seasonal and trend filters. University of Wollongong, Australia.

